



Click [here](#) to ask an associate for production status of specific part numbers.

## Evaluates: DS28C36, DS2476

## DS28C36 Evaluation System

### General Description

The DS28C36 evaluation system (EV system) provides the hardware and software necessary to evaluate the DS28C36 and DS2476. The EV system consists of five DS28C36/DS2476 devices in a 6-pin TDFN package, a DS9121AQ+ evaluation TDFN socket board, and a DS9481P-300# USB-to-I<sup>2</sup>C/1-Wire<sup>®</sup> adapter. The evaluation software runs on Windows<sup>®</sup> 10, Windows 8, and Windows 7 operating systems (64- and 32-bit versions). The EV system provides a handy user interface to exercise the features of the DS28C36 and DS2476.

### EV System Contents

QTY	DESCRIPTION
5	Includes five DS28C36BQ+ DeepCover Secure Authenticators (6-pin TDFN)
5	DS2476BQ+ DeepCover Secure Coprocessor (6-pin TDFN)
1	DS9121AQ+ socket board (6-pin TDFN)
1	DS9481P-300# USB-to-I <sup>2</sup> C/1-Wire Adapter
1	USB Type-A to USB Mini Type-B cable

### Benefits and Features

- Demonstrates the Features of the DS28C36 DeepCover<sup>®</sup> Secure Authenticator
- Demonstrates the Features of the DS2476 DeepCover Secure Coprocessor
- I<sup>2</sup>C and 1-Wire Communication is Logged to Aid Firmware Designers Understanding of the DS2476 and DS28C36
- I<sup>2</sup>C/1W-USB Adapter Creates a Virtual COM Port on Any PC
- Fully Compliant with USB Specification v2.0
- Software Runs on Windows 10, Windows 8, and Windows 7 for Both 64-Bit and 32-Bit Versions
- 3.3V ±3% 1-Wire Operating Voltage
- Convenient On-Board Test Points and TDFN Socket
- Evaluation Software Available by Request
- Proven PCB Layout
- Fully Assembled and Tested

Ordering Information appears at end of data sheet.

### DS28C36 EV System

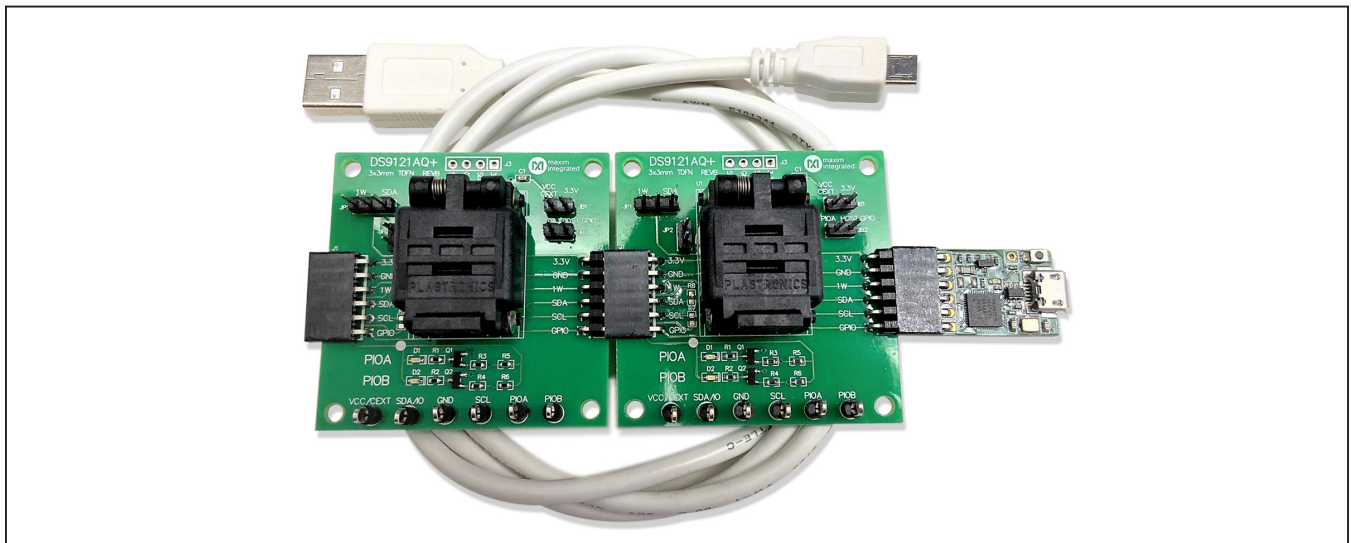


Figure 1. DS28C36EV with USB Cable

1-Wire and DeepCover are registered trademarks of Maxim Integrated Products, Inc.  
Windows is a registered trademark and registered service mark of Microsoft Corporation.

19-8600; Rev 4; 1/20

## DS28C36 Evaluation System

Evaluates: DS28C36, DS2476

### Detailed Description of Software

The DS28C36 evaluation program user interface (Figure 13) has four tabs, **General Commands**, **SHA2 Commands**, **ECDSA Commands**, and **Other Coprocessor Commands**. The **Setup** section is used to make the device selections that apply to the **General Commands**, **SHA2 Commands**, **ECDSA Commands**, and **Other Coprocessor Commands** tabs. Here is a summary of the function of each tab:

- **General Commands** is used as the main tool to evaluate the DS28C36/DS2476 general functions to write or read from the user memory pages, crypto-related memory pages, decrement counter, RNG, and protection registers.

- **SHA2 Commands** is used to evaluate the DS28C36/DS2476 symmetric (SHA-256) security function commands.
- **ECDSA Commands** is used to evaluate the DS28C36/DS2476 integrated asymmetric (ECC-P256) security function commands.
- **Other Coprocessor Commands** is used to evaluate the DS2476 coprocessor that computes any required HMACs or ECDSA signatures with its additional command set to do any operations on the DS28C36. **Note:** Grayed out when DS28C36 is selected.

All tabs include a communications **Log** area consisting of an I<sup>2</sup>C Log or 1-Wire Log output.

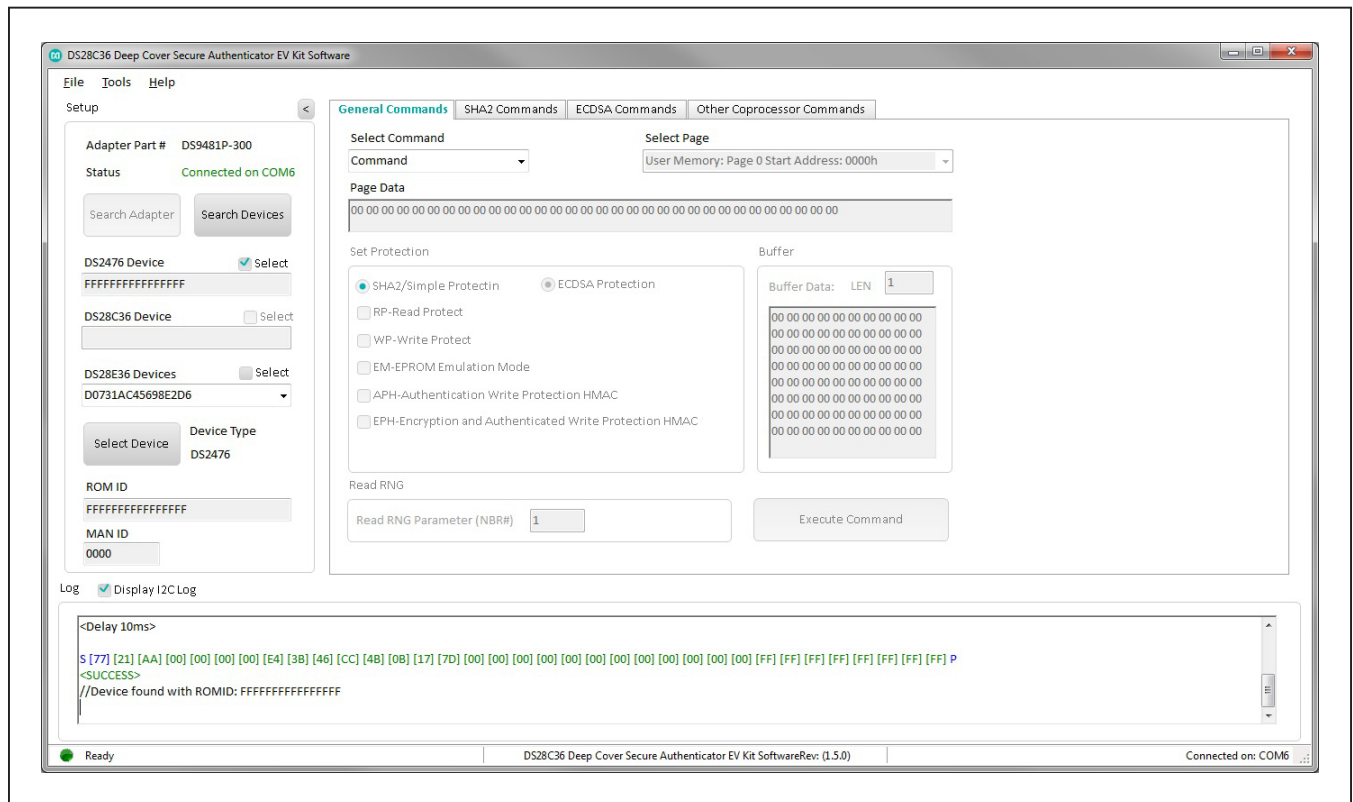


Figure 13. DS28C36 EVKIT Program (Default View Upon Opening)

# ABRIDGED DATA SHEET

---

## DS28C36 Evaluation System

Evaluates: DS28C36, DS2476

### Ordering Information

PART	TYPE
DS28C36EVKIT#	EV System

#Denotes RoHS compliant.