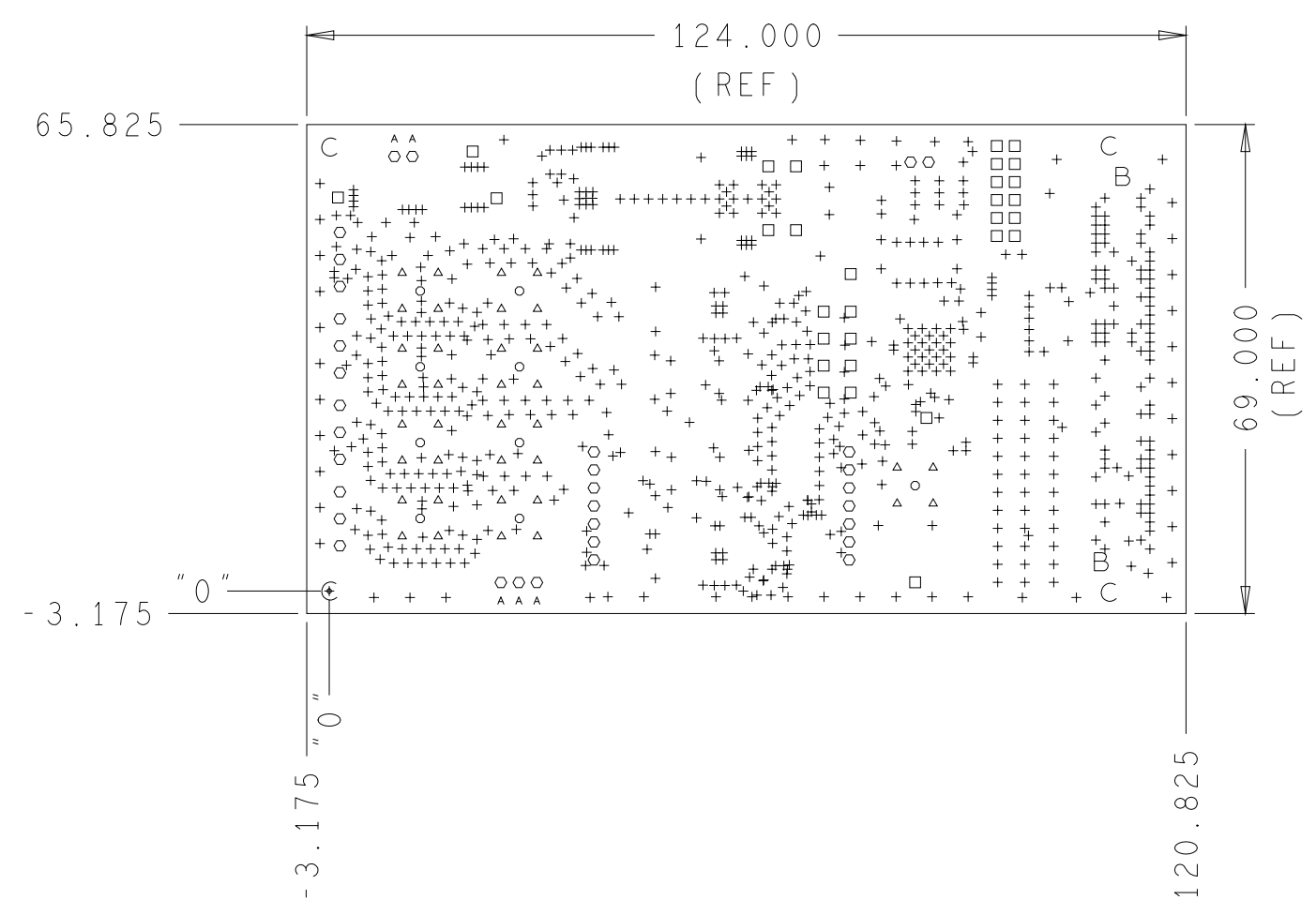



REVISIONS			
REV	DESCRIPTION	DATE	APPROVED
A	INITIAL RELEASE	22JUL21	

HOLE TOLERANCE
 UNLESS SPECIFIED
 PLATED: +/-0.076MM
 NON PLATED: +/-0.050MM

DRILL CHART: TOP to BOTTOM				
FINISHED HOLES IN MILLIMETERS				
FIGURE	SIZE	PLATED	QTY	TOLERANCE/NOTES
+	0.254	PLATED	771	DIA MAX
□	1.016	PLATED	30	
○	1.143	PLATED	33	
◦	1.168	PLATED	9	
△	1.702	PLATED	36	
▲	1.194	NON-PLATED	5	
B	1.27	NON-PLATED	2	+2/-0 MIL
C	3.175	NON-PLATED	4	



PRIMARY SIDE

UNLESS OTHERWISE SPECIFIED DIMENSIONS ARE IN MM TOLERANCES DECIMALS .XX -- .254 FRACTIONS -- 1/32 ANGLES -- 1/2 .XXX -- .127 .XXXX -- .127	APPROVAL	DATE	 WWM DIVISION 804 WOBURN STREET WILMINGTON, MA 01887			
	TEMPLATE ENGINEER					
	HARDWARE SERVICES	22JUL21				
	HARDWARE SYSTEMS					
MATERIAL	TEST ENGINEER		TITLE FABRICATION EVAL - AD4134FMCZ CUSTOMER EVALUATION Z			
	COMPONENT ENGINEER	22JUL21				
	TEST PROCESS					
	HARDWARE RELEASE	22JUL21				
FINISH	DESIGNER	22JUL21	SIZE	FSCM NO	DRAWING NUMBER	REV
	PTD ENGINEER	22JUL21	C	24355	09-067468	A
	CHECKER					
DO NOT SCALE DWG			SCALE	1/1		SHEET 1 OF 2

4 | 3 | 2 | 1

SPECIFICATIONS:

ROHS COMPLIANCE NOTE: HOMOGENOUS MATERIALS IN THIS BOARD SHALL BE COMPLIANT THE EU RoHS DIRECTIVE 2002/95/EC

MATERIALS: ALL LAMINATES AND BONDING MATERIALS SHOULD BE SELECTED FROM IPC-4101 OR IPC-4103, MINIMUM Tg>170degC, Td>300degC, U.L. RATING OF 94 V-0

MATERIAL FAMILY: ISOLA 370HR OR EQUIVALENT

CLADDING: EXTERNAL LAYERS .5 OZ. COPPER, OVERPLATE TO 1.5 OZ. INTERNAL SIGNAL LAYERS .5 OZ. COPPER. INTERNAL PLANE LAYERS 1 OZ. COPPER.

NOTE: IF THE LAYER STACKUP CONFLICTS WITH THE ABOVE CLADDING SPECIFICATIONS THEN THE LAYER STACKUP SHALL TAKE PRECEDENCE.

SOLDER MASK: SHALL BE LIQUID PHOTOIMAGEABLE (LPI) APPLIED ON BOTH SIDES OVER BARE COPPER OR GOLD AND SHALL MEET IPC-SM-840 (LATEST REV.) CLASS 3. COLOR GREEN.

SILK SCREEN: SHALL BE PERMANENT NON-CONDUCTIVE EPOXY INK, COLOR: WHITE SYNTHETIC INKJET PRINTING ALLOWED FOR DENSE BOARDS, COLOR: WHITE

SURFACE FINISH: ENIG (ELECTROLESS NICKEL/IMMERSION GOLD) PER IPC-4552 LATEST REVISION

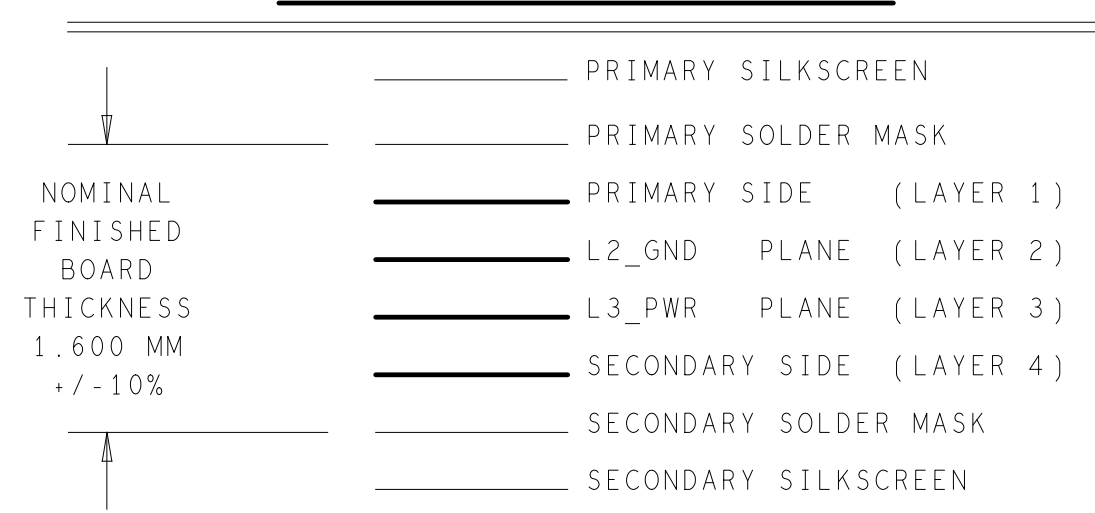
INTENTIONAL SHORTS: IF SUPPLIED DATA INCLUDES A FILE "READ_ME.2", THEN INTENTIONAL NET SHORTS EXIST. CUSTOMER REVIEW AND APPROVAL IS REQUIRED IF SUPPLIED DATA REPORTS ANY CONDITION THAT DOES NOT MATCH "READ_ME.2" FILE PROVIDED.

TEST REQUIREMENTS: 100% NETLIST ELECTRICAL VERIFICATION USING CUSTOMER SUPPLIED IPC-D-356 NETLIST FOR OPENS AND SHORTS WHEN "GERBER DATA" IS PROVIDED. THIS VERIFICATION ALSO REQUIRED FOR "ODB++" DATA PER EMBEDDED NETLIST.

REQUIREMENTS:

1. REFER TO IPC-6010 SERIES (LATEST REV.), CLASS 2 FOR FABRICATION UNLESS OTHERWISE SPECIFIED.
2. ACCEPTABILITY PER ANALOG DEVICES, INC. SPECIFICATION TST00115. (LATEST REVISION.)
3. MODIFICATIONS TO THE ARTWORK ARE NOT ALLOWED WITHOUT WRITTEN AUTHORIZATION.
4. HOLE PATTERN TOLERANCES FOR UNDIMENSIONED HOLES SHALL BE A DIAMETER OF 0.127 MM FROM THEIR TRUE POSITION.
5. PLATED HOLE WALL THICKNESS SHALL NOT BE LESS THAN 0.0254MM MINIMUM AVERAGE, WITH NO READING LESS THAN .02032MM BY CROSS SECTION.
6. HOLE DIAMETERS APPLY AFTER PLATING.
7. FINISHED CONDUCTOR WIDTHS SHALL NOT BE REDUCED FROM THE NOMINAL INDICATED ON THE MASTER PATTERN, BY MORE THAN THE CONDUCTOR THICKNESS.
8. MINIMUM DESIGN LINE WIDTH IS .200 MM.
9. MINIMUM DESIGN SPACING IS .195 MM.
- ~~10. NON FUNCTIONAL PAD REMOVAL FROM INNER SIGNAL LAYERS MAY BE PERFORMED AFTER CUSTOMER APPROVAL.~~
11. IF PAD SIZES PROVIDED ARE NOT LARGE ENOUGH TO MAINTAIN ANNULAR RING REQUIREMENT, MFGR. MAY REQUEST APPROVAL TO TEAR DROP PADS TO MAINTAIN ANNULAR RING. (AT PAD TO TRACE INTERSECTION ONLY AND ELECTRICAL INTEGRITY MUST BE MAINTAINED.)
12. THIEVING MAY BE ADDED TO COMPENSATE FOR LOW COPPER DENSITY AREAS ON THIS DESIGN ONLY AFTER REVIEW AND APPROVAL FROM THE CUSTOMER:
 - A. THIEVING TO CARD EDGE, FIDUCIALS, NON-PLATED THROUGH HOLES, ALL OTHER FEATURES TO BE 5.080 MM MINIMUM.
 - B. THERE SHALL BE NO THIEVING IN ANY AREAS FREE OF SOLDER MASK OR INTERNAL COPPER PLANES.
13. MFGR. TO LEGIBLY ETCH OR STAMP/SCREEN WITH PERMANENT NON-CONDUCTIVE INK ON SECONDARY SIDE IN A CLEAR AREA UNLESS OTHERWISE INDICATED:
 - A. U.L. CODE-FLAMMABILITY RATING
 - B. DATE CODE (STAMP)
 - C. LOT NUMBER
 - D. MFGR LOGO
 - E. SUCCESSFUL ELECTRICAL TEST.
14. REPAIRS PER IPC-7711/21 (LATEST REV.) ARE ALLOWED.

4 LAYER STACKUP



IMPEDANCE TABLE

NOTE: ALL IMPEDANCE TOLERANCE +/-10%
DP = DIFFERENTIAL PAIR

LAYER	IMPEDANCE	REFERENCE	LINE WIDTH	SPACE
L1	100 OHM DP	L2	0.254MM	0.2030MM
L4	100 OHM DP	L3	0.254MM	0.2030MM

PRIMARY SIDE

		WWM DIVISION 804 WOBURN STREET WILMINGTON, MA 01887	
		SIZE C	FSCM NO 24355
SCALE 1/1		SHEET 2 OF 2	

4 | 3 | 2 | 1

4

3

2

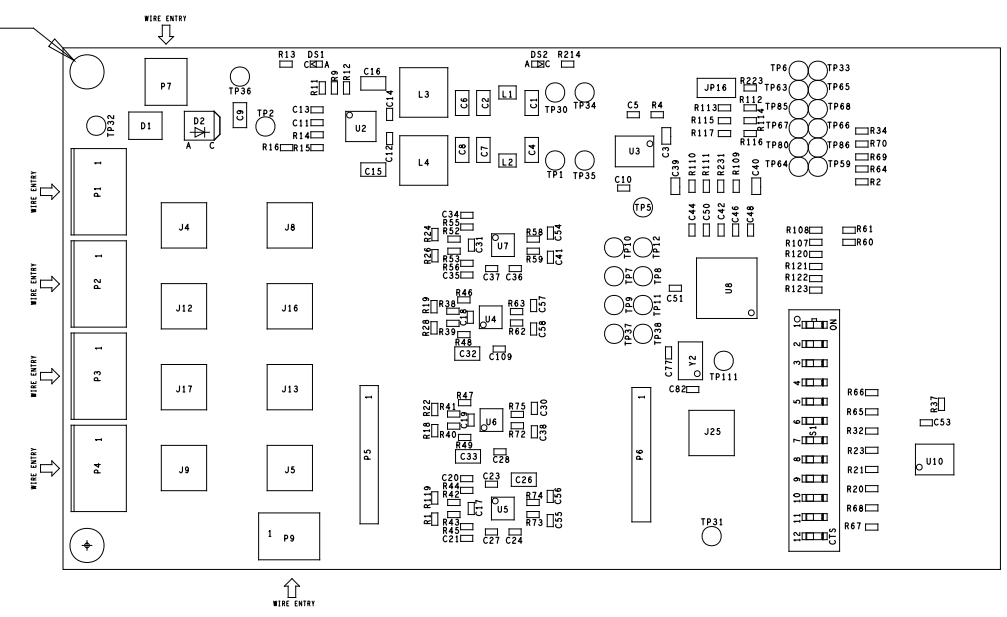
1

REVISIONS			
REV	DESCRIPTION	DATE	APPROVED
A	INITIAL RELEASE	22JUL21	


ASSEMBLY NOTES:

1. BOARD ACCEPTABILITY PER ANALOG DEVICES, INC. SPECIFICATION TST00119 (LATEST REVISION).
2. REPAIRS PER IPC-7711/21(LATEST REVISION) ARE ALLOWED.
3. REPAIRS ARE NOT ALLOWED IN SOLDERMASK FREE AREAS ON EITHER SIDE OF THE BOARD.
4. RoHS COMPLIANCE: ASSEMBLY VENDOR SHOULD ASSURE COMPLIANCE WITH LEAD-FREE AND RoHS PCB ASSEMBLY STANDARDS (EU RoHS DIRECTIVE 2002/95/EC).
5. INSTALL STANDOFF (M028071) ON SECONDARY SIDE AND SCREW (M027766) ON PRIMARY SIDE.
6. INSTALL JUMPER SHUNT (M036050) ON PIN 1 AND PIN 2 OF JP16.

SEE NOTE #5 (2 PLACES)



PRIMARY SIDE

UNLESS OTHERWISE SPECIFIED DIMENSIONS ARE IN MM TOLERANCES DECIMALS FRACTIONS ANGLES .XX -.254 +-1/32 -- 2 .XXX -.127 .XXXX -.127	APPROVAL	DATE	 <div style="text-align: right;"> WWM DIVISION 804 WOBURN STREET WILMINGTON, MA 01887 </div>			
	TEMPLATE ENGINEER					
	HARDWARE SERVICES	22JUL21				
	HARDWARE SYSTEMS					
MATERIAL	TEST ENGINEER		TITLE ASSEMBLY EVAL - AD4134FMCZ CUSTOMER EVALUATION Z			
	COMPONENT ENGINEER	22JUL21				
	TEST PROCESS					
	HARDWARE RELEASE	22JUL21				
FINISH	DESIGNER	22JUL21	SIZE	FSCM NO	DRAWING NUMBER	REV
	PTD ENGINEER	22JUL21	C	24355	01-067468	A
	CHECKER					
DO NOT SCALE DWG			SCALE	1/1		SHEET 1 OF 2

4

3

2

1

4

3



2

1

D

D

C

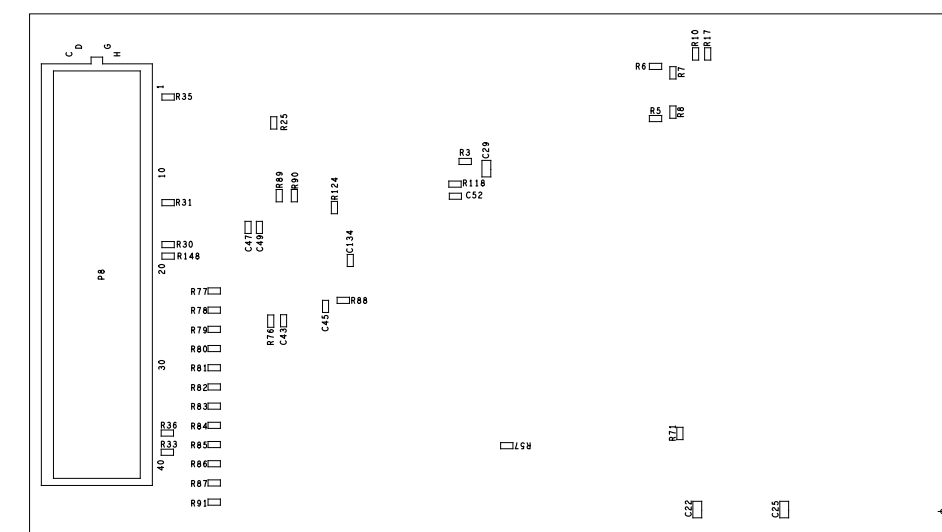
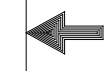
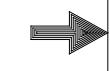
C

B

B

A

A



SECONDARY SIDE



WWM
DIVISION
804 WOBURN STREET
WILMINGTON, MA 01887

SIZE	FSCM NO	DRAWING NUMBER	REV
C	24355	01-067468	A

SCALE	1/1	SHEET 2 OF 2	
-------	-----	--------------	--

4

3

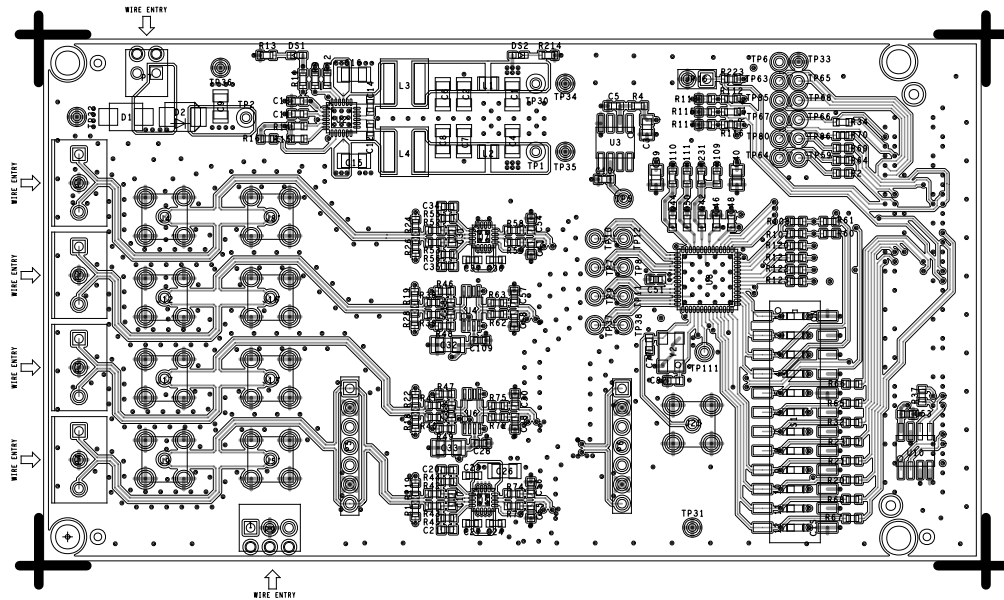


2

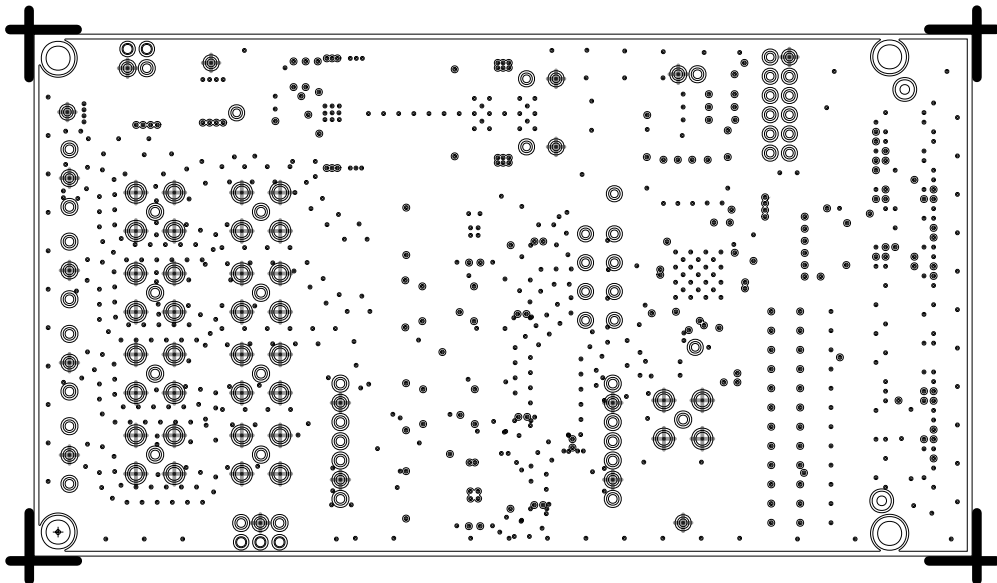
1

L1 PRIMARY
08-067468-01
REV A

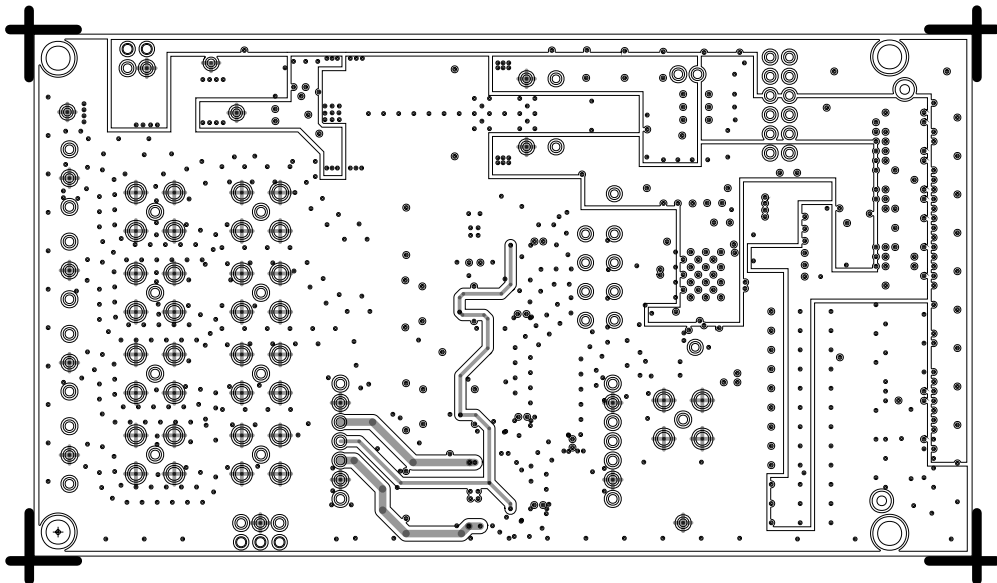
SEE NOTE #5 (2 PLACES)



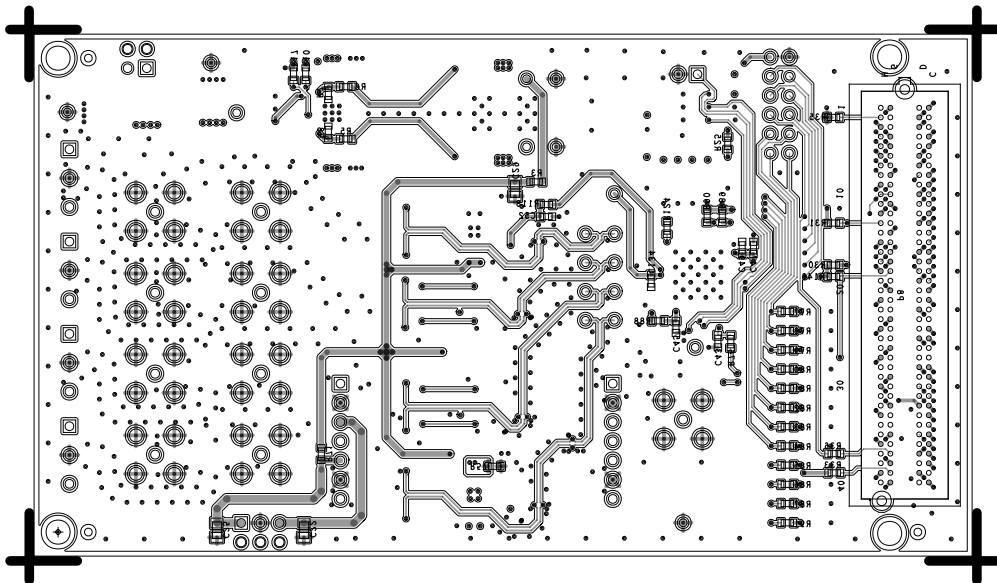
L2 GND
08-067468-07
REV A



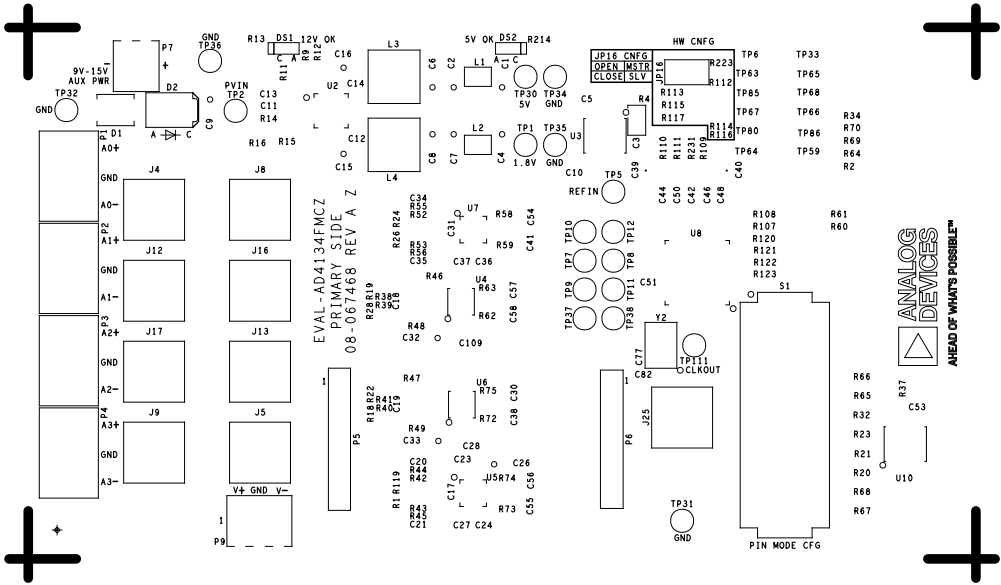
L3 PWR
08-067468-08
REV A



L4 SECONDARY
08-067468-02
REV A



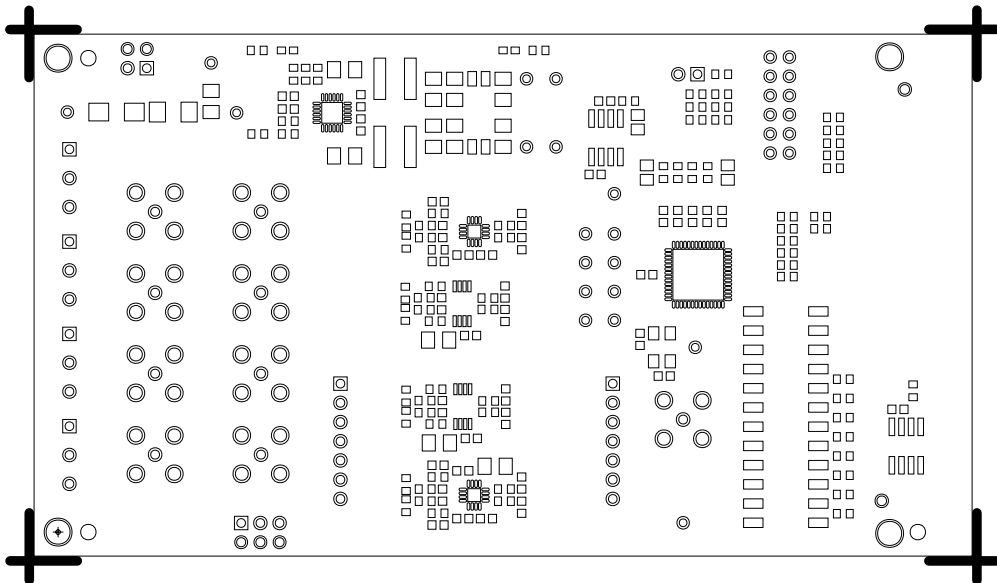
SILKSCREEN PRIMARY
08-067468-03
REV A



SOLDERMASK PRIMARY

08-067468-04

REV A



SILKSCREEN SECONDARY
08-067468-05
REV A



R11
R10
R9
R8
R7

R17
R16
R15
R14
R13
R12
R11
R10
R9
R8
R7
R6
R5
R4
R3
R2
R1



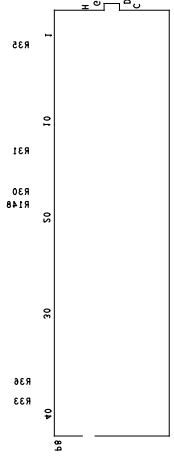
R22
R21
R20
R19
R18
R17
R16
R15
R14
R13
R12
R11
R10
R9
R8
R7
R6
R5
R4
R3
R2
R1

08-067468 REV A
SECONDARY SIDE

CSB

R3
R18
C25

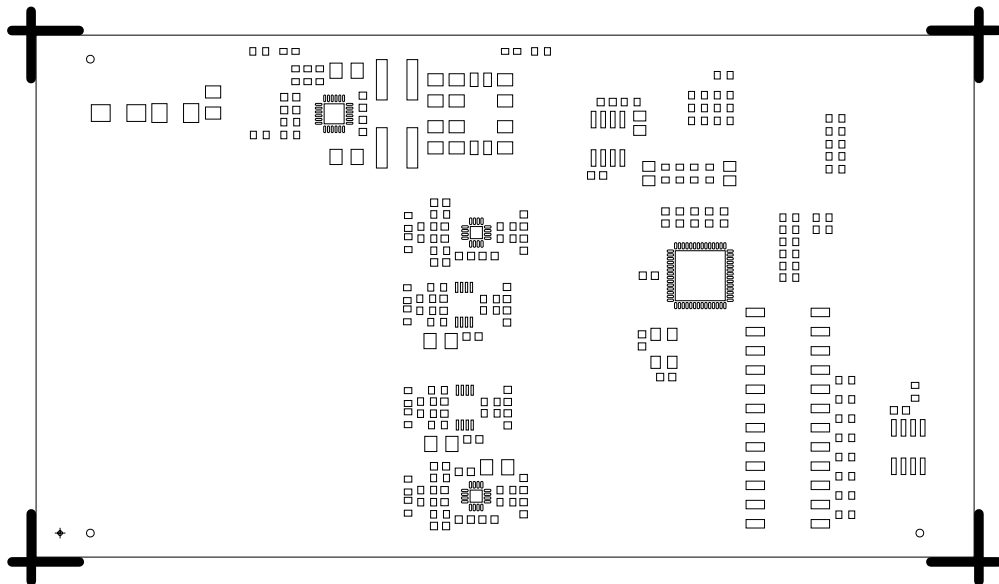
R88
C42
C134
R154
R80
R89
R88
R87
R86
R85
R84
R83
R82
R81
R80
R79
R78
R77
R76
R75
R74
R73
R72
R71
R70
R69
R68
R67
R66
R65
R64
R63
R62
R61
R60
R59
R58
R57
R56
R55
R54
R53
R52
R51
R50
R49
R48
R47
R46
R45
R44
R43
R42
R41
R40
R39
R38
R37
R36
R35
R34
R33
R32
R31
R30
R29
R28
R27
R26
R25
R24
R23
R22
R21
R20
R19
R18
R17
R16
R15
R14
R13
R12
R11
R10
R9
R8
R7
R6
R5
R4
R3
R2
R1



PASTEMASK PRIMARY

08-067468-09

REV A



PASTEMASK SECONDARY
08-067468-10
REV A

