

RADIATION TEST REPORT

PRODUCT: AD584SHQMLR

MASK:

FILE:

DATE CODE:

GAMMA: 0, 100K,24Hr.

GAMMA SOURCE: Co60

DOSE RATE: 51.40 rad/sec

FACILITIES: National Semiconductor
Sunnyvale, Ca.

TESTED: December 18,2002

The RADTESTSM DATA SERVICE is a compilation of radiation test results on Analog Devices' Space grade products. It is designed to assist customers in selecting the right product for applications where radiation is a consideration. Many products manufactured by Analog Devices, Inc. have been shown to be radiation tolerant to most tactical radiation environments, Analog Devices, Inc. does not make any claim to maintain or guarantee these levels of radiation tolerance without lot qualification test.

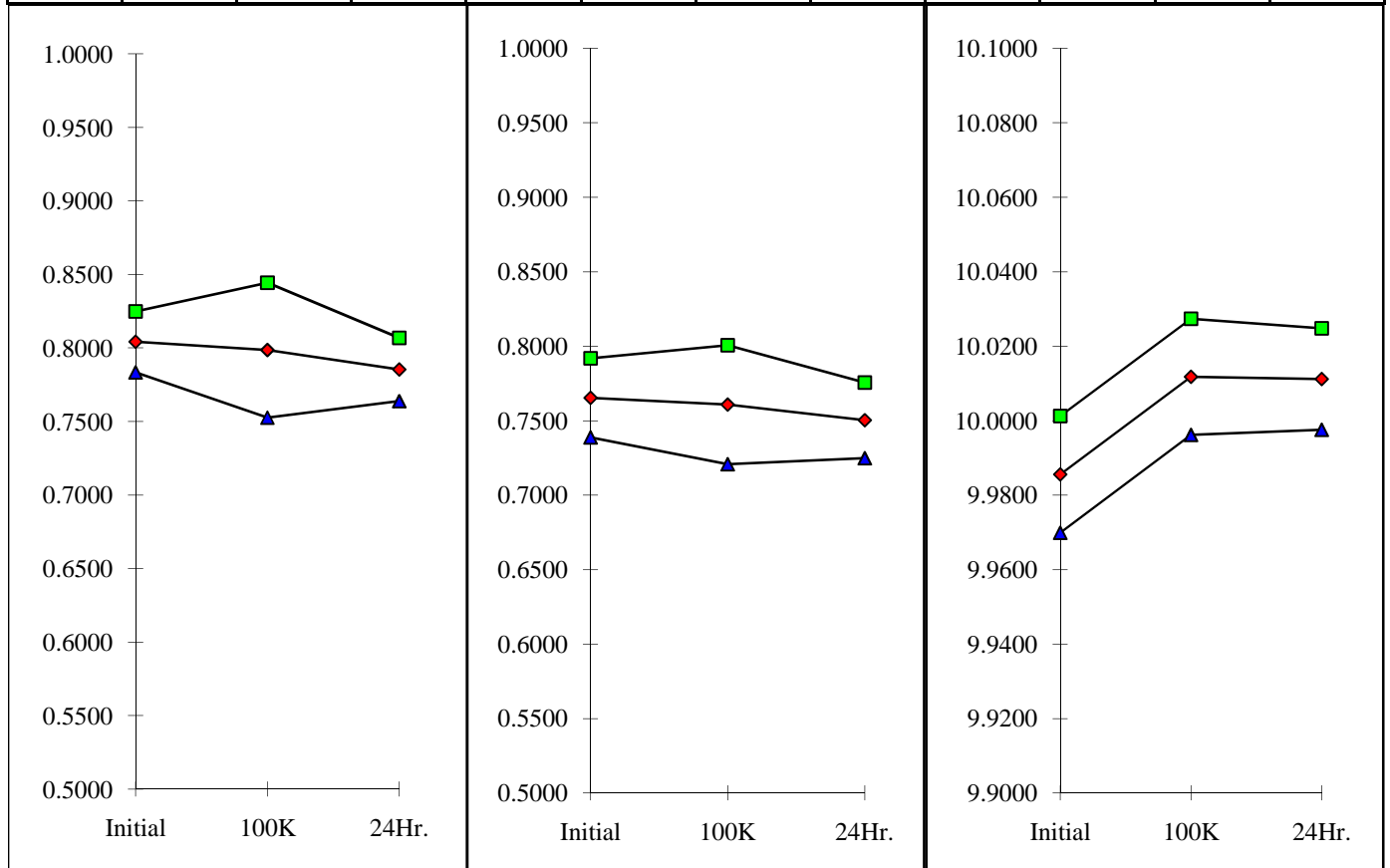
It is the responsibility of the Procuring Activity to screen products from Analog Devices, Inc. for compliance to Nuclear Hardness Critical Items (HCI) specifications.

WARNING:

Analog Devices, Inc. does not recommend use of this data to qualify other product grades or process levels. Analog Devices, Inc. is not responsible and has no liability for any consequences, and all applicable Warranties are null and void, if any Analog product is modified in any way or used outside of normal environmental and operating conditions, including the parameters specified in the corresponding data sheet. Analog Devices does not guarantee that wafer manufacturing is the same for all process levels.



T# 1	ISY Vin=38V, IL=0mA			T# 2	ISY Vin=30V, IL=0mA			T# 3	VOUT1 @ Vout=10V		
SN	Initial	100K	24Hr.	SN	Initial	100K	24Hr.	SN	Initial	100K	24Hr.
1501	0.7985	0.7877	0.7751	1501	0.7576	0.7488	0.7467	1501	9.9828	9.9797	9.9828
1502	0.8098	0.7915	0.7847	1502	0.7684	0.7653	0.7569	1502	9.9828	10.0134	10.0134
1503	0.8019	0.7968	0.7816	1503	0.7708	0.7563	0.7481	1503	9.9828	10.0103	10.0073
1504	0.8062	0.7902	0.7834	1504	0.7658	0.7504	0.7580	1504	9.9828	10.0134	10.0103
1505	0.8071	0.7946	0.7881	1505	0.7629	0.7539	0.7556	1505	9.9858	10.0073	10.0134
1623	0.7912	0.7795	0.7948	1623	0.7662	0.7528	0.7532	1623	9.9889	10.0103	10.0073
1624	0.7937	0.7729	0.7758	1624	0.7506	0.7296	0.7368	1624	9.9889	10.0073	10.0073
1625	0.8019	0.7746	0.7772	1625	0.7492	0.7454	0.7408	1625	9.9889	10.0134	10.0073
1626	0.7906	0.7831	0.7717	1626	0.7568	0.7466	0.7459	1626	9.9889	10.0134	10.0134
1702	0.8100	0.7995	0.7854	1702	0.7594	0.7599	0.7429	1702	9.9797	10.0011	10.0073
1703	0.8077	0.8036	0.7880	1703	0.7585	0.7645	0.7469	1703	9.9828	10.0042	10.0073
1704	0.8140	0.8178	0.7942	1704	0.7708	0.7698	0.7632	1704	9.9828	10.0134	10.0073
1705	0.7980	0.8032	0.7879	1705	0.7632	0.7656	0.7535	1705	9.9828	10.0073	10.0073
2022	0.8030	0.8191	0.7861	2022	0.7663	0.7785	0.7573	2022	9.9767	10.0164	10.0195
2023	0.8089	0.8203	0.7897	2023	0.7668	0.7761	0.7558	2023	9.9858	10.0073	10.0104
2024	0.8123	0.8262	0.7977	2024	0.7851	0.7807	0.7556	2024	9.9828	10.0073	10.0042
2025	0.8137	0.8156	0.7917	2025	0.7840	0.7824	0.7651	2025	9.9920	10.0164	10.0134
2145	0.8031	0.8007	0.7934	2145	0.7599	0.7618	0.7446	2145	9.9767	10.0195	10.0195
2146	0.8022	0.7970	0.7808	2146	0.7669	0.7667	0.7402	2146	9.9950	10.0195	10.0165
2147	0.8013	0.7958	0.7752	2147	0.7656	0.7527	0.7356	2147	9.9950	10.0195	10.0165
2148	0.8082	0.7889	0.7801	2148	0.7665	0.7528	0.7466	2148	9.9889	10.0134	10.0134
min	0.7906	0.7729	0.7717	min	0.7492	0.7296	0.7356	min	9.9767	10.0011	10.0042
max	0.8140	0.8262	0.7977	max	0.7851	0.7824	0.7651	max	9.9950	10.0195	10.0195
stdev	0.0069	0.0153	0.0072	stdev	0.0088	0.0133	0.0085	stdev	0.0052	0.0052	0.0045
average	0.8042	0.7985	0.7854	average	0.7652	0.7606	0.7501	average	9.9855	10.0117	10.0111
+3S	0.8250	0.8444	0.8069	+3S	0.7917	0.8005	0.7756	+3S	10.0012	10.0273	10.0247
-3S	0.7835	0.7526	0.7638	-3S	0.7386	0.7207	0.7247	-3S	9.9698	9.9961	9.9975



T# 4	VOUT2 @ Vout=7.5V			V	T# 5	VOUT3 @ Vout=5V			V	T# 6	VOUT4 @ Vout=2.5V			V
SN	Initial	100K	24Hr.		SN	Initial	100K	24Hr.		SN	Initial	100K	24Hr.	
1501	7.4866	7.4886	7.4846		1501	4.9904	4.9904	4.9904		1501	2.4997	2.4997	2.4997	
1502	7.4907	7.5090	7.5050		1502	4.9904	5.0027	5.0027		1502	2.4997	2.4997	2.4997	
1503	7.4907	7.5111	7.5090		1503	4.9935	5.0027	5.0027		1503	2.4997	2.4997	2.4997	
1504	7.4866	7.5050	7.5050		1504	4.9904	5.0027	5.0027		1504	2.4997	2.4997	2.4997	
1505	7.4886	7.5090	7.5090		1505	4.9904	5.0027	5.0027		1505	2.4997	2.4997	2.4997	
1623	7.4927	7.5090	7.5070		1623	4.9965	5.0027	5.0027		1623	2.4997	2.4997	2.4997	
1624	7.4907	7.5111	7.5070		1624	4.9935	5.0027	5.0027		1624	2.4997	2.4997	2.4997	
1625	7.4927	7.5090	7.5070		1625	4.9935	5.0027	5.0027		1625	2.4997	2.4997	2.4997	
1626	7.4907	7.5070	7.5070		1626	4.9965	5.0027	5.0027		1626	2.4997	2.4997	2.4997	
1702	7.4805	7.4988	7.4989		1702	4.9965	5.0027	5.0028		1702	2.4997	2.4997	2.4998	
1703	7.4866	7.5050	7.5050		1703	4.9904	5.0027	5.0028		1703	2.4997	2.4997	2.4998	
1704	7.4886	7.5050	7.5050		1704	4.9935	5.0027	5.0028		1704	2.4997	2.4997	2.4998	
1705	7.4866	7.5050	7.5050		1705	4.9904	5.0027	5.0028		1705	2.4997	2.4997	2.4998	
2022	7.4805	7.5131	7.5111		2022	4.9904	5.0027	5.0088		2022	2.4966	2.4997	2.4997	
2023	7.4886	7.5050	7.5050		2023	4.9965	5.0027	5.0027		2023	2.4997	2.4997	2.4997	
2024	7.4866	7.5050	7.5050		2024	4.9965	5.0027	5.0027		2024	2.4997	2.4997	2.4997	
2025	7.4927	7.5131	7.5111		2025	4.9965	5.0027	5.0027		2025	2.4997	2.4997	2.4997	
2145	7.4805	7.5111	7.5132		2145	4.9904	5.0027	5.0058		2145	2.4997	2.4997	2.4997	
2146	7.4968	7.5152	7.5132		2146	4.9965	5.0088	5.0027		2146	2.4997	2.4997	2.4997	
2147	7.4968	7.5131	7.5111		2147	4.9965	5.0088	5.0058		2147	2.4997	2.4997	2.4997	
2148	7.4886	7.5111	7.5091		2148	4.9965	5.0027	5.0027		2148	2.4997	2.4997	2.4997	
min	7.4805	7.4988	7.4989		min	4.9904	5.0027	5.0027		min	2.4966	2.4997	2.4997	
max	7.4968	7.5152	7.5132		max	4.9965	5.0088	5.0088		max	2.4997	2.4997	2.4998	
stdev	0.0047	0.0040	0.0035		stdev	0.0028	0.0019	0.0016		stdev	0.0007	0.0000	0.0000	
average	7.4888	7.5085	7.5074		average	4.9938	5.0033	5.0033		average	2.4995	2.4997	2.4997	
+3S	7.5028	7.5206	7.5179		+3S	5.0021	5.0089	5.0081		+3S	2.5016	2.4997	2.4998	
-3S	7.4748	7.4965	7.4970		-3S	4.9854	4.9977	4.9985		-3S	2.4975	2.4997	2.4996	

