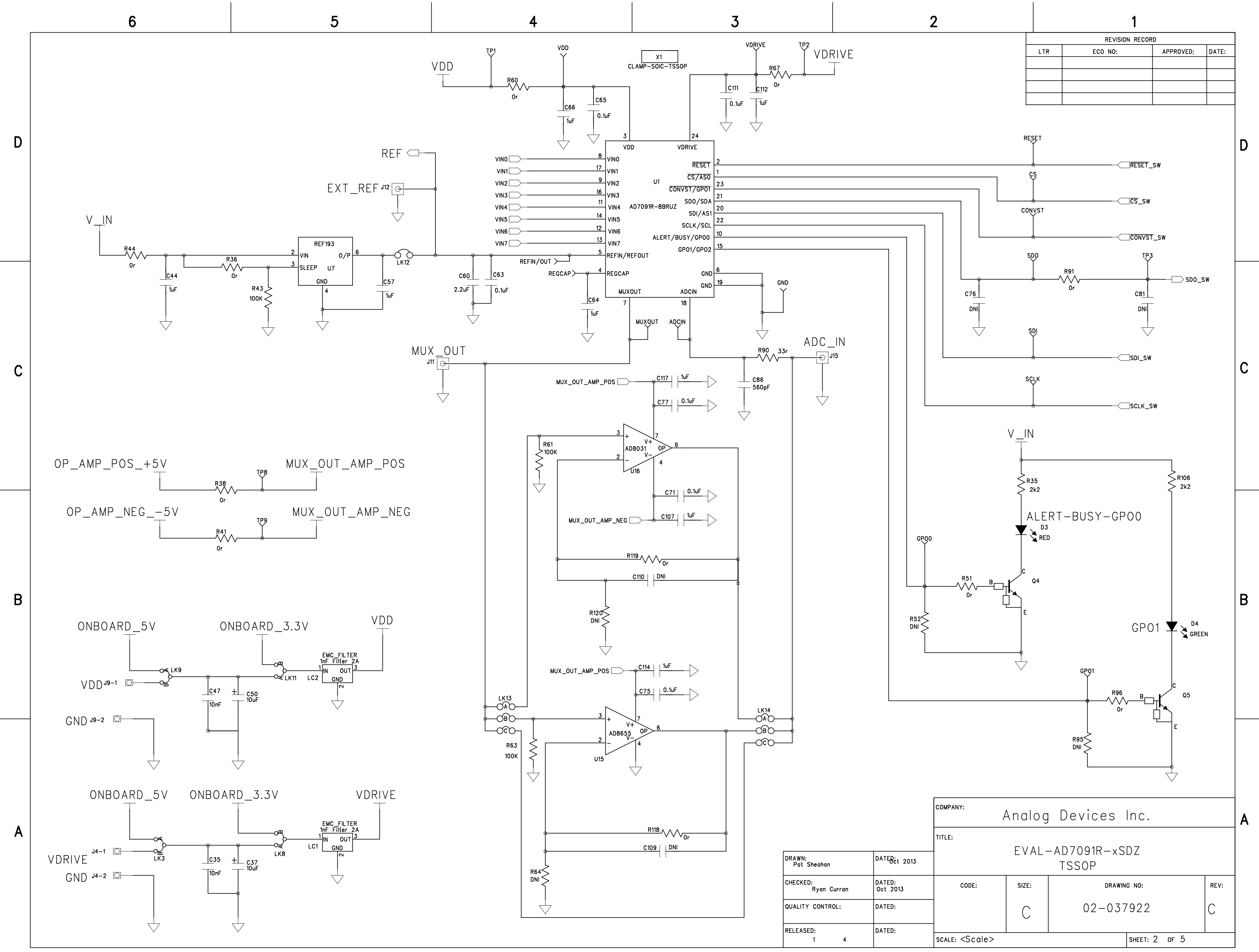


REVISION RECORD			
LTR	ECO NO:	APPROVED:	DATE:
A	Initial Release		Dec 2013
B	ECR-045200	R. Curran	7/Feb/14
C	ECR-057622	P. Sheahan	6Nov15

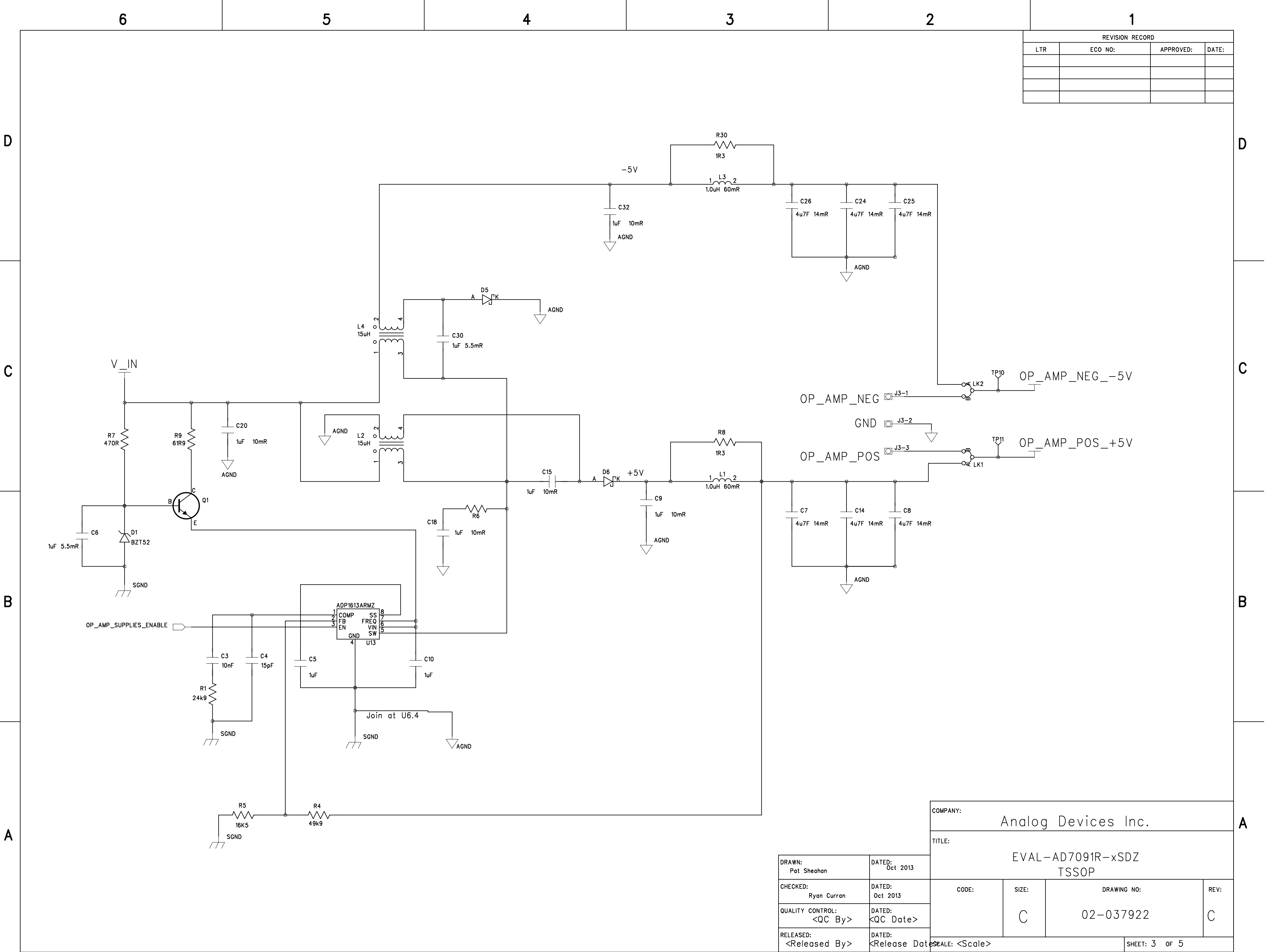
COMPANY:			
Analog Devices Inc.			
TITLE:			
EVAL-AD7091R-xSDZ			
DRAWN:	DATED:	CODE:	SIZE:
Pat Sheahan	Oct 2013		C
CHECKED:	DATED:	DRAWING NO:	REV:
Ryan Curran	Oct 2013	02-037922	C
QUALITY CONTROL:	DATED:		
<QC By>	<QC Date>		
RELEASED:	DATED:		
<Released By>	<Release Date>		



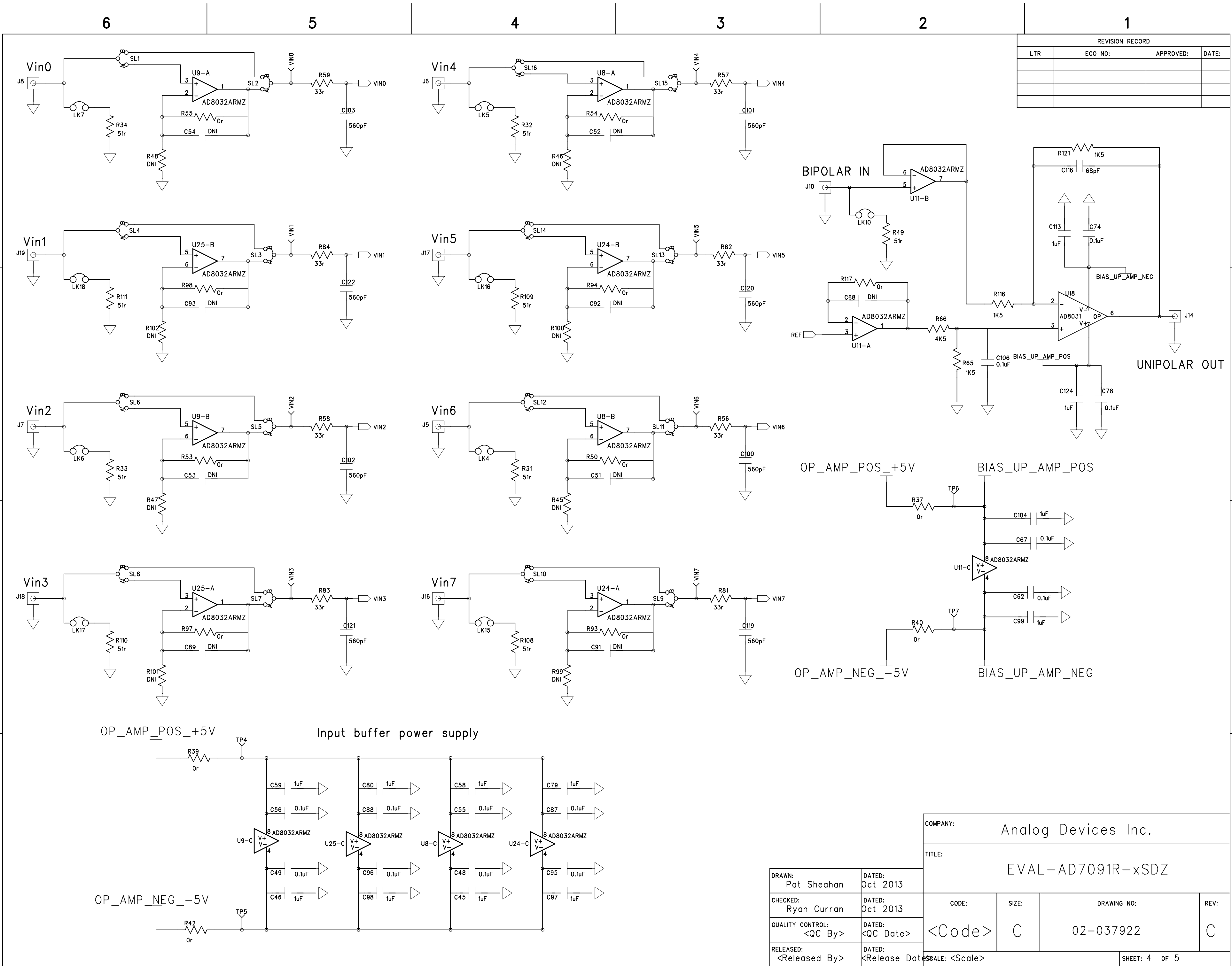
REVISION RECORD			
LTR	ECO NO:	APPROVED:	DATE:

DRAWN: Pat Sheahan	DATED: Oct 2013
CHECKED: Ryan Curran	DATED: Oct 2013
QUALITY CONTROL:	DATED:
RELEASED: 1 4	DATED:

COMPANY: Analog Devices Inc.			
TITLE: EVAL-AD7091R-xSDZ TSSOP			
CODE:	SIZE: C	DRAWING NO: 02-037922	REV: C
SCALE: <Scale>			SHEET: 2 OF 5



DRAWN: Pat Sheahan		DATED: Oct 2013		EVAL-AD7091R-xSDZ TSSOP			
CHECKED: Ryan Curran		DATED: Oct 2013		CODE:	SIZE: C	DRAWING NO: 02-037922	REV: C
QUALITY CONTROL: <QC By>		DATED: <QC Date>					
RELEASED: <Released By>		DATED: <Release Date>		SCALE: <Scale>			SHEET: 3 of 5



REVISION RECORD			
LTR	ECO NO:	APPROVED:	DATE:

DRAWN: Pat Sheahan	DATED: Oct 2013
CHECKED: Ryan Curran	DATED: Oct 2013
QUALITY CONTROL: <QC By>	DATED: <QC Date>
RELEASED: <Released By>	DATED: <Release Date>

COMPANY: Analog Devices Inc.			
TITLE: EVAL-AD7091R-xSDZ			
CODE: <Code>	SIZE: C	DRAWING NO: 02-037922	REV: C
SCALE: <Scale>			SHEET: 4 OF 5

6

5

4

3

2

1

I2C bus 1 is common across both connectors on SDP – Pull up resistors required
BMODEt: Pull up with a 10K resistor to set SDP to boot from a SPI FLASH on the daughter board

Board ID EEPROM (24LC32) must be on I2C bus 0,
Board ID EEPROM (24LC32) must be on I2C bus 0,

REVISION RECORD

LTR	ECO NO:	APPROVED:	DATE:

TMRA = CONVST

GPIO0 = RESET

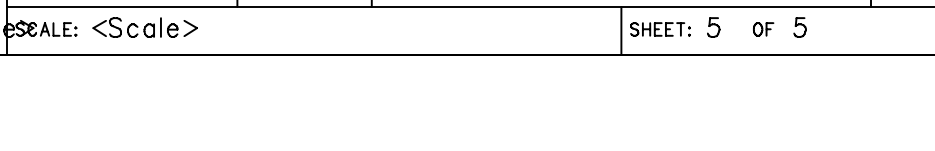
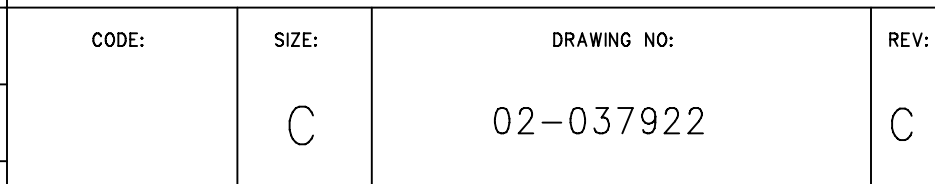
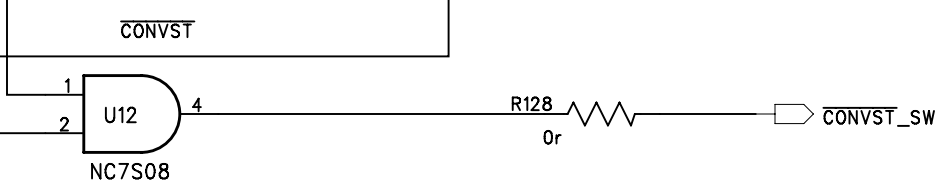
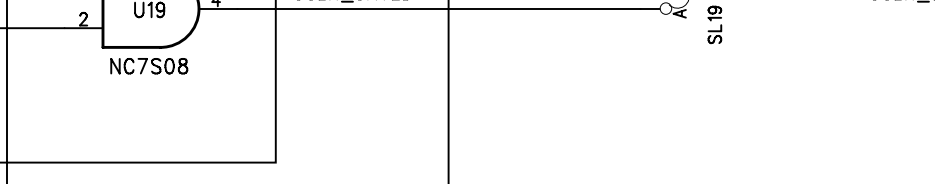
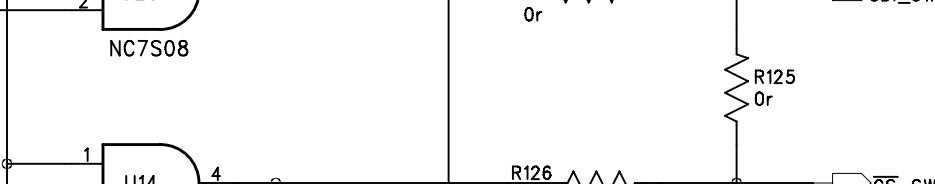
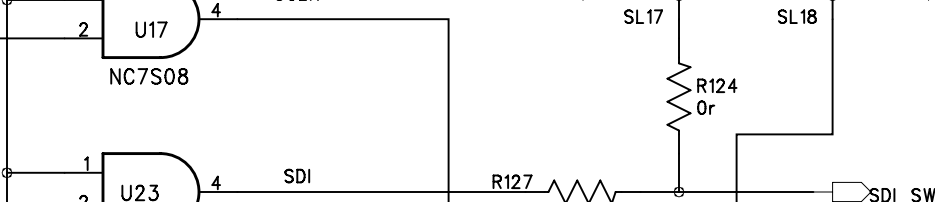
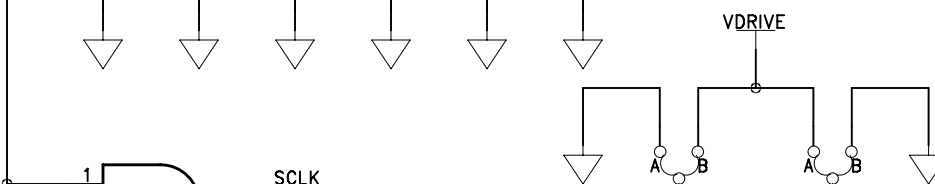
(connected to blackfin GPIO – use I2C_0 first)

VIN: Use this pin to power the SDP requires 5V 200mA
Use SDP_GND as return for VSDP

Main I2C bus (Connected to blackfin TWI – Pull up resistors not required)

place caps near logic ICs

C115 0.1uF
C108 0.1uF
C123 0.1uF
C105 0.1uF
C118 0.1uF
C125 0.1uF



COMPANY:

Analog Devices Inc.

TITLE:

EVAL-AD7091R-xSDZ
TSSOPDRAWN:
Pat SheahanDATED:
Oct 2013CHECKED:
Ryan CurranDATED:
Oct 2013QUALITY CONTROL:
<QC By>DATED:
<QC Date>RELEASED:
<Released By>DATED:
<Release Date>

CODE:

SIZE:

DRAWING NO:

REV:

C

02-037922

C

SCALE: <Scale>

SHEET: 5 OF 5