

6

5

4

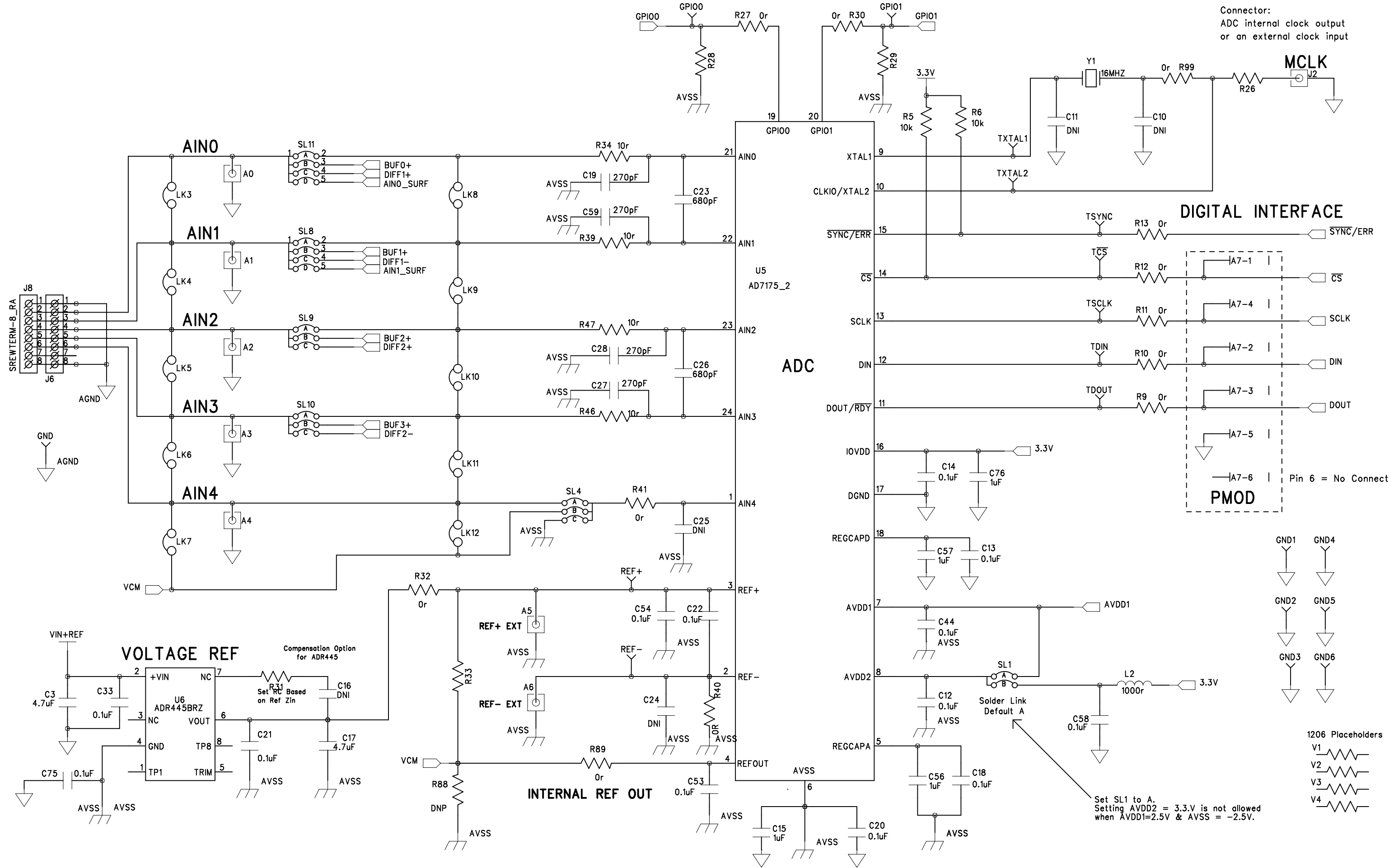
3

2

1

REVISION RECORD			
LTR	ECO NO:	APPROVED:	DATE:

AD7175-2 24-Bit 250KSPS SD ADC

GPIO Ref to 5V Analog
Provision for voltage divider
for low voltagesConnector:
ADC internal clock output
or an external clock input

COMPANY: Analog Devices International

TITLE: EVAL-AD7175-2SDZ

DRAWN: Pat Sheahan	DATED: 3-Sept 2014
CHECKED: Rob Kiely	DATED: 3-Sept 2014
QUALITY CONTROL: <QC By>	DATED: <QC Date>
RELEASED: <Released By>	DATED: <Release Date>

CODE:	SIZE:	DRAWING NO:	REV:
	A2	02-039441	E
SCALE: N/A			SHEET: 1 OF 5

6

5

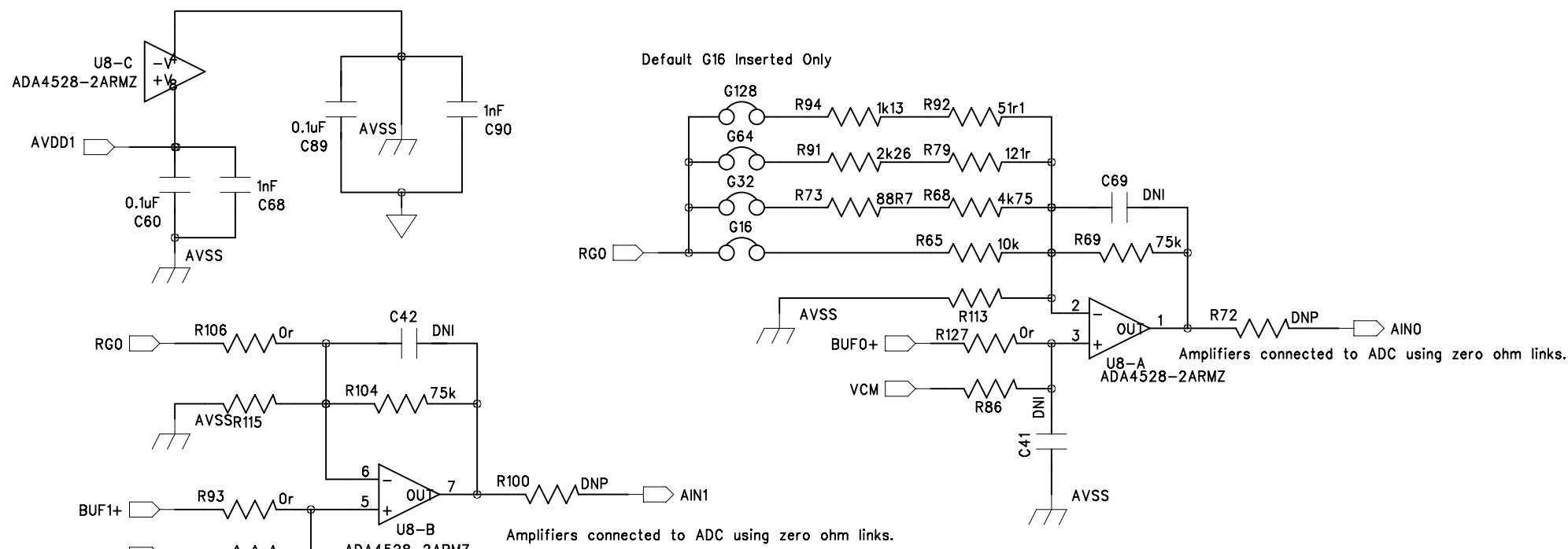
4

3

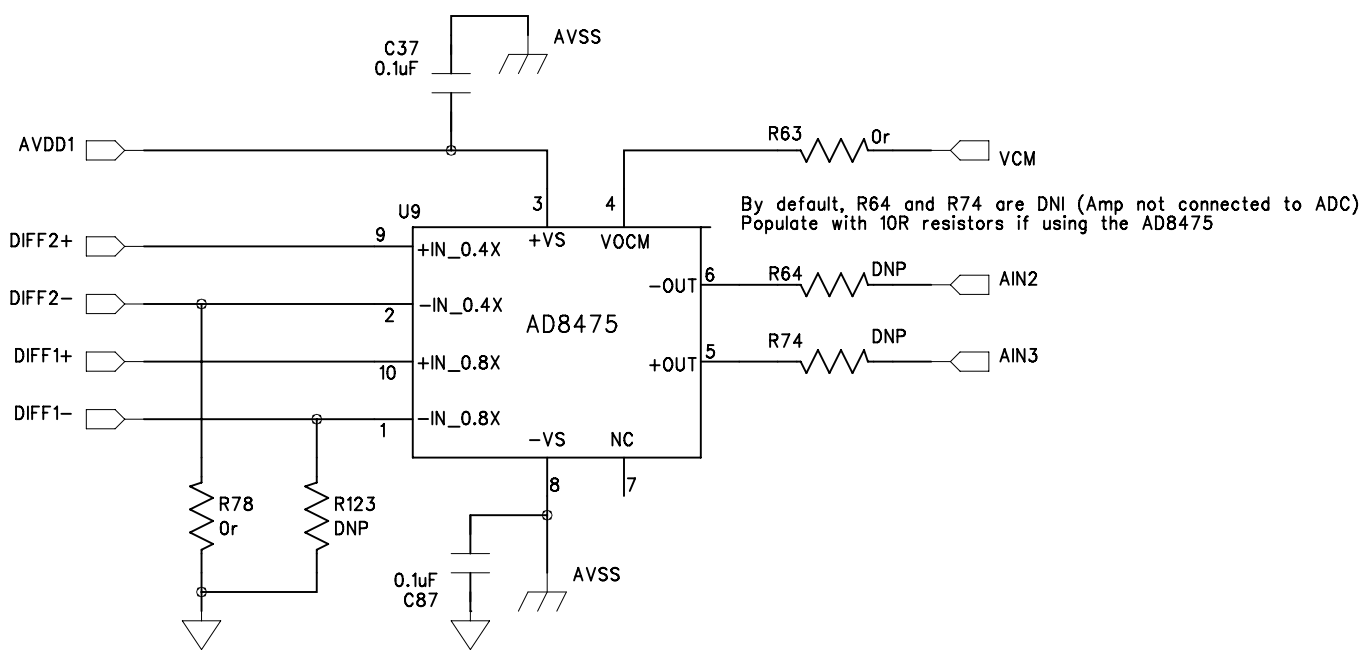
2

1

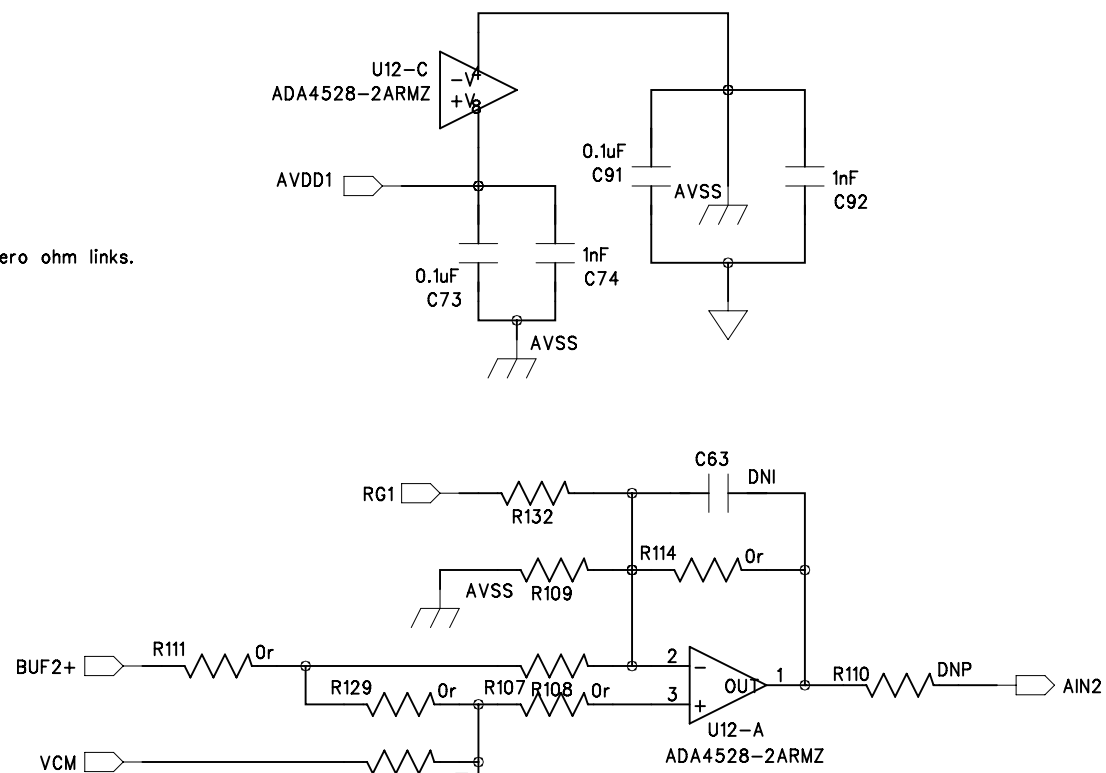
REVISION RECORD			
LTR	ECO NO:	APPROVED:	DATE:



Selectable Gain InAmp 1st Stage

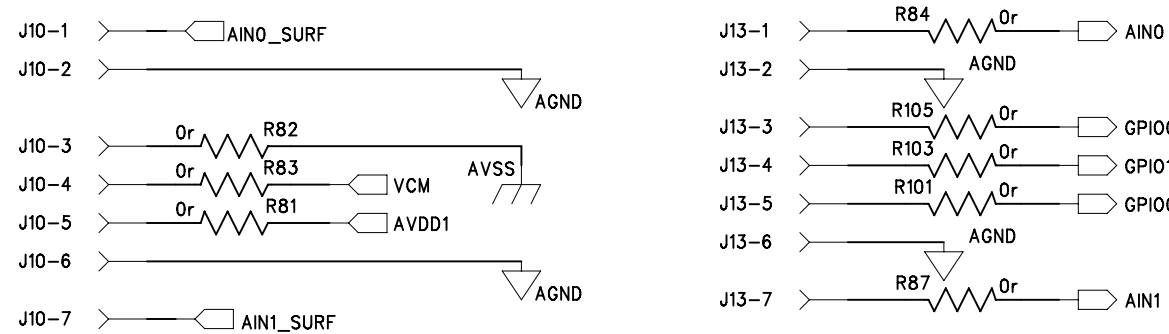


Attenuating Single Ended to Differential Driver



Reconfigurable Input Stage

OPTIONAL HEADER CONNECTOR



COMPANY: Analog Devices International

TITLE: EVAL-AD7175-2SDZ

DRAWN: Pat Sheahan	DATED: 3-Sept 2014
CHECKED: Rob Kiely	DATED: 3-Sept 2014
QUALITY CONTROL: <QC By>	DATED: <QC Date>
RELEASED: <Release By>	DATED: <Release Date>

CODE:	SIZE:	DRAWING NO:	REV:
	A2	02-039441	E
SCALE: N/A			SHEET: 2 of 5

6

5

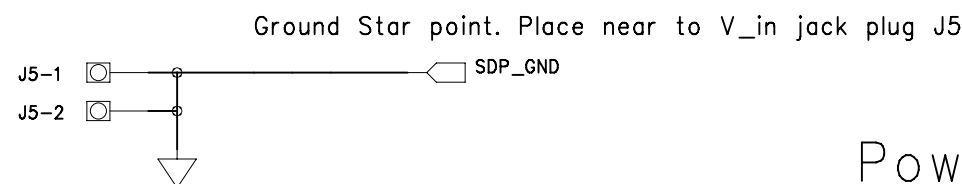
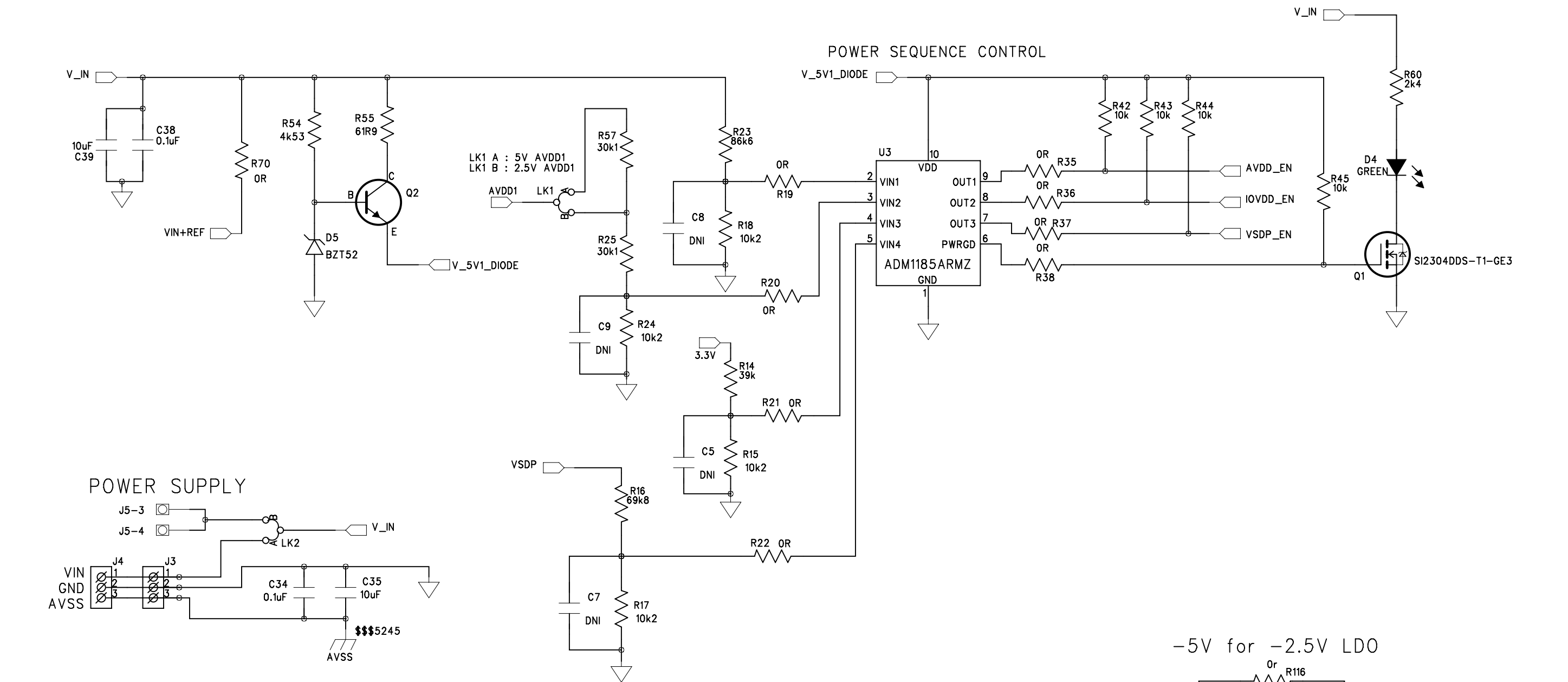
4

3

2

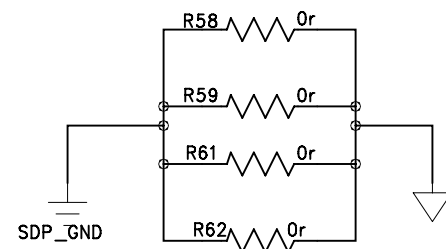
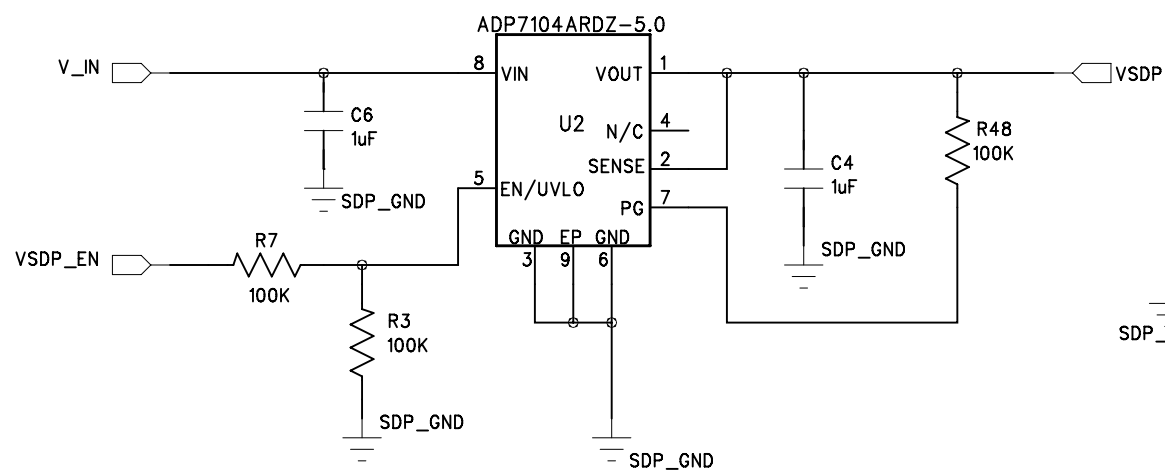
1

REVISION RECORD			
LTR	ECO NO:	APPROVED:	DATE:



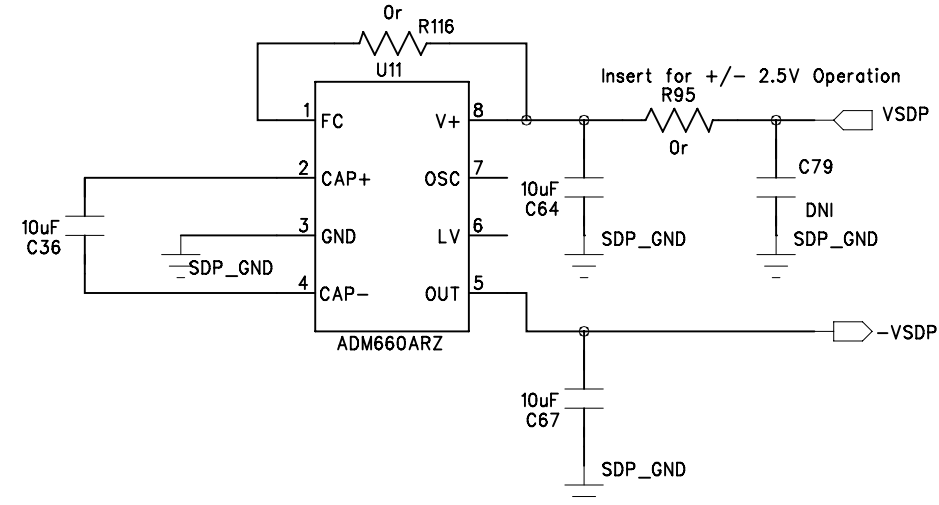
Power Supply for SDP Board

5V LDO to Power SDP



Connect SDP_GND and AGND for ADP7104 return currents

-5V for -2.5V LDO



COMPANY: Analog Devices International			
TITLE: EVAL-AD7175-2SDZ			
CHECKED: Rob Kiely	DATED: 3-Sept 2014	CODE:	SIZE: A2
QUALITY CONTROL: <QC By>	DATED: <QC Date>	DRAWING NO: 02-039441	
RELEASED: <Released By>	DATED: <Release Date>	REV: E	
SCALE: N/A			SHEET: 3 OF 5

DRAWN: Pat Sheahan	DATED: 3-Sept 2014
CHECKED: Rob Kiely	DATED: 3-Sept 2014
QUALITY CONTROL: <QC By>	DATED: <QC Date>
RELEASED: <Released By>	DATED: <Release Date>

6

5

4

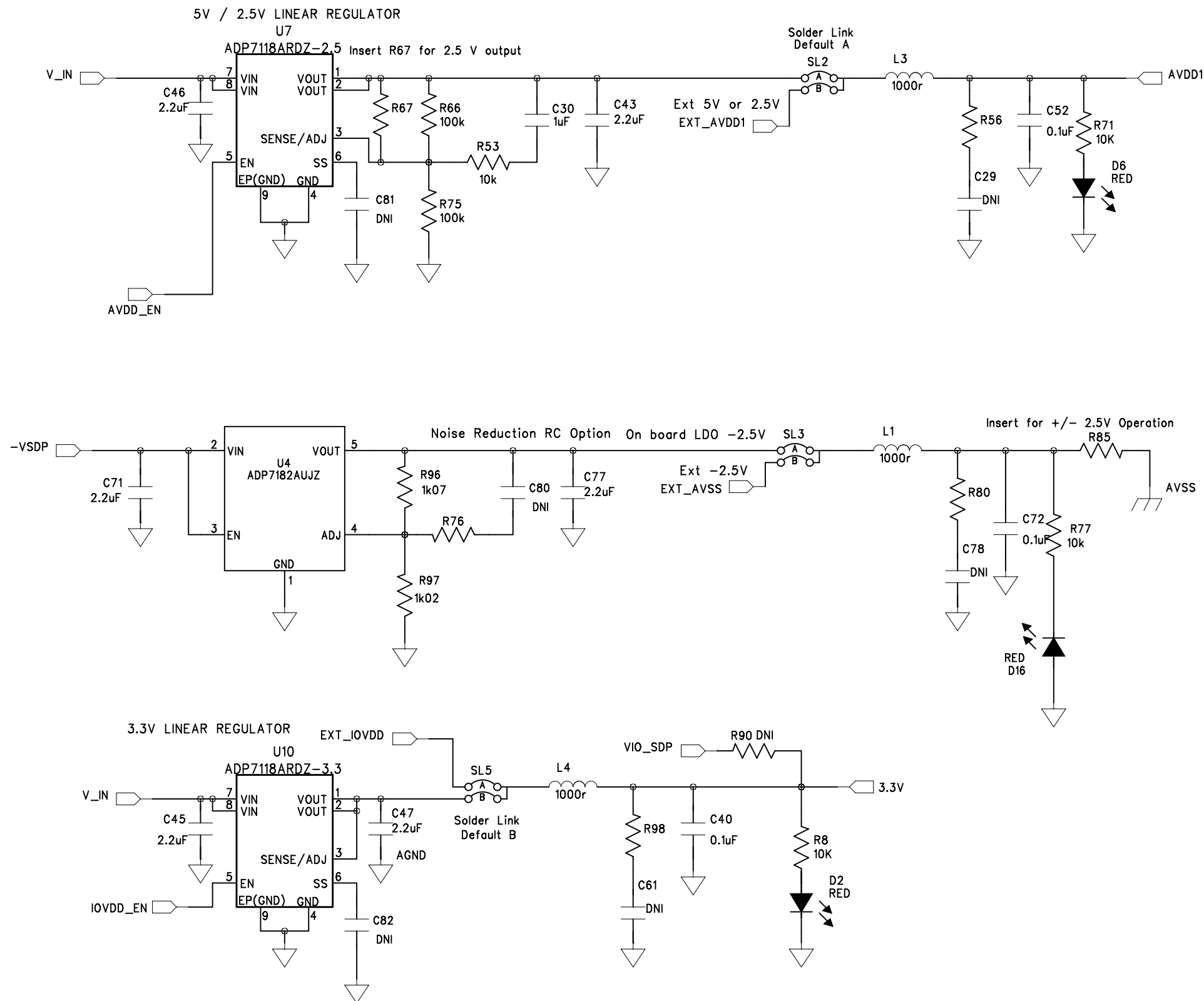
3

2

1

REVISION RECORD			
LTR	ECO NO:	APPROVED:	DATE:

5V, 3.3V & +/- 2.5V Regulators



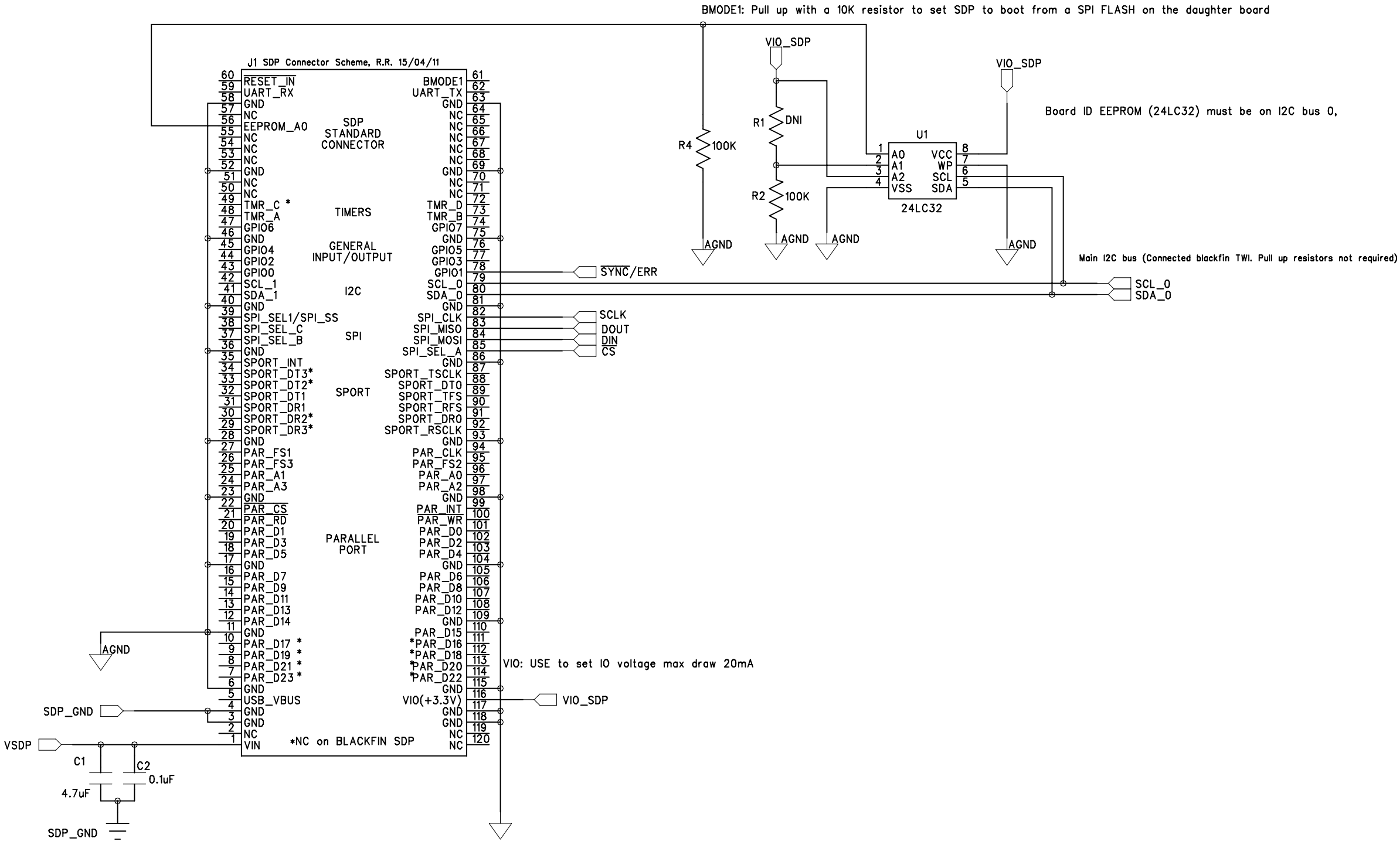
COMPANY: Analog Devices International				
TITLE: EVAL-AD7175-2SDZ				
CODE:	SIZE:	DRAWING NO:		REV:
	A2	02-039441		E
SCALE: N/A			SHEET: 4 OF 5	

DRAWN: Pat Sheahan	DATED: 3-Sept 2014
CHECKED: Rob Kiely	DATED: 3-Sept 2014
QUALITY CONTROL: <QC By>	DATED: <QC Date>
RELEASED: <Released By>	DATED: <Release Date>

REVISION RECORD			
LTR	ECO NO:	APPROVED:	DATE:

SDP CONNECTOR EEPROM-SW/USB ID

VIO: USE to set IO voltage max draw 20mA
VIN: Use this pin to power the SDP requires 4-7V 200mA
BMODE1: Pull up with a 10K resistor to set SDP to boot from a SPI FLASH on the daughter board



VIN: Use this pin to power the SDP requires 5V 200mA
I2C bus 1 is common across both connectors on SDP - Pull up resistors required (connected to blackfin GPIO - use I2C_0 first)

COMPANY: Analog Devices International

TITLE: EVAL-AD7175-2SDZ

DRAWN: Pat Sheahan	DATED: 3-Sept 2014
CHECKED: Rob Kiely	DATED: 3-Sept 2014
QUALITY CONTROL: <QC By>	DATED: <QC Date>
RELEASED: <Released By>	DATED: <Release Date>

CODE:	SIZE:	DRAWING NO:	REV:
	A2	02-039441	E
SCALE: N/A			SHEET: 5 OF 5