

6

5

4

3

2

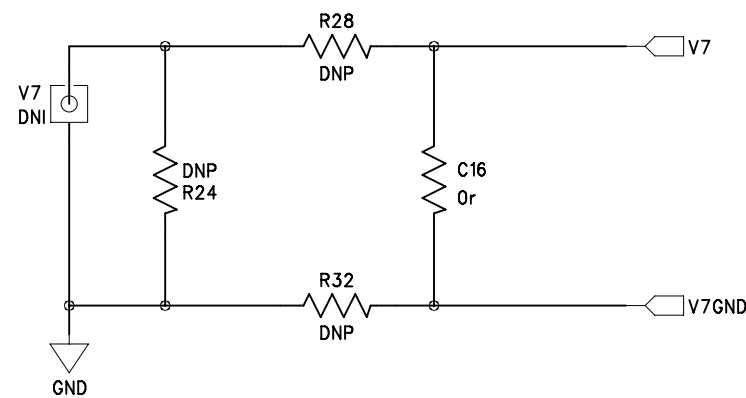
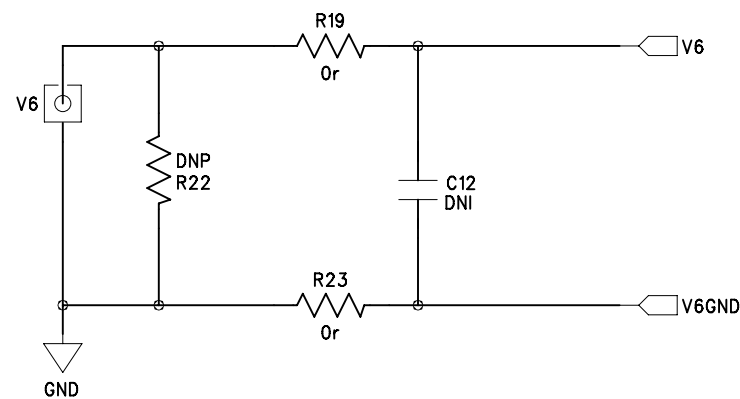
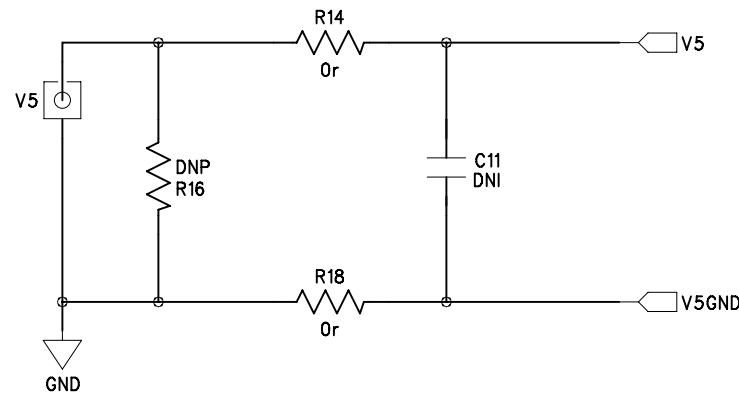
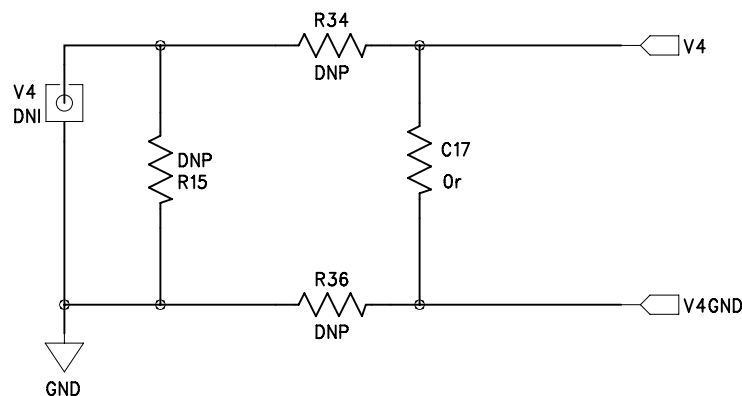
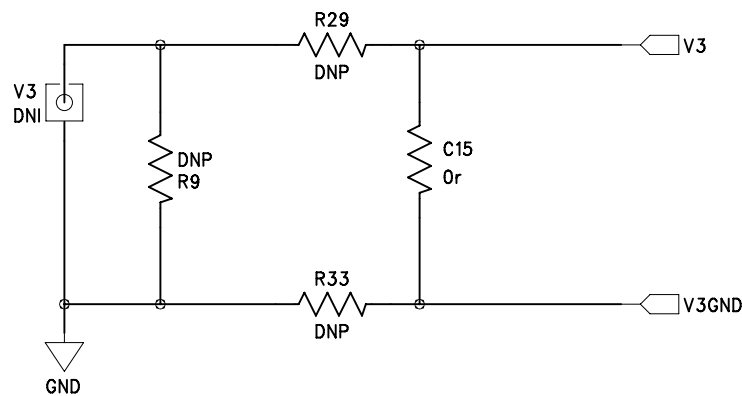
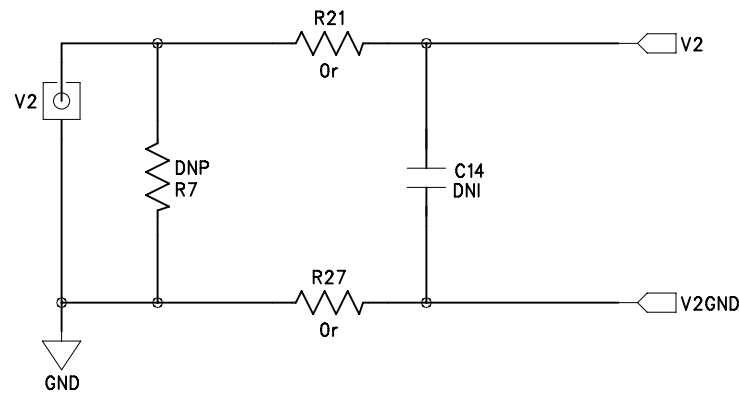
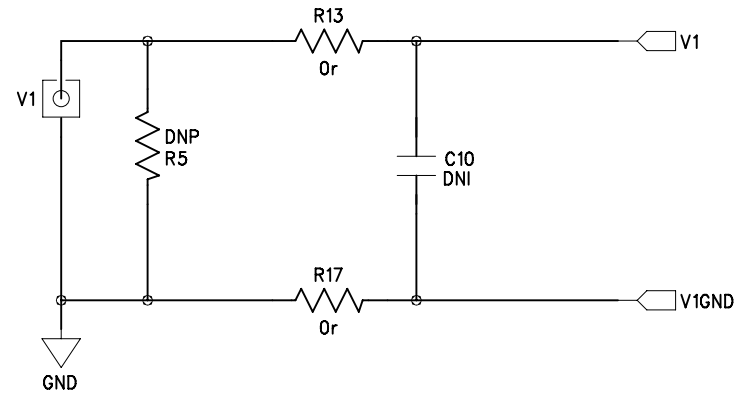
1

D

C

B

A



REVISION RECORD

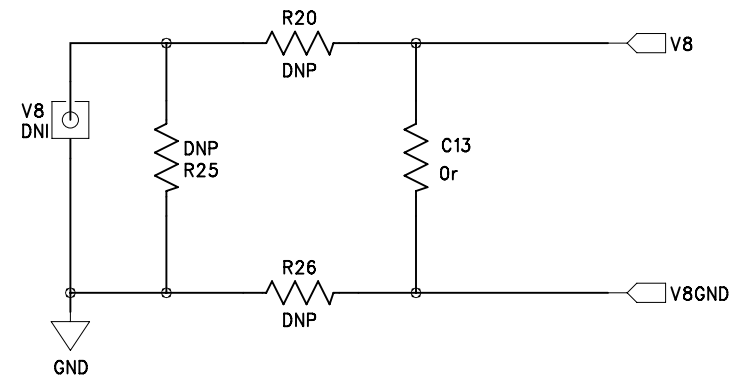
LTR	ECO NO:	APPROVED:	DATE:

D

C

B

A



COMPANY: ANALOG DEVICES			
TITLE: EVAL-AD7605-4SDZ			
CODE:	SIZE:	DRAWING NO:	REV:
<Code>	A3	EVAL-AD7605-4SDZ	A
SCALE: NTS			SHEET: 2 OF 5

DRAWN: Rob Finnerty	DATED: 23/03/15
CHECKED: <Checked By>	DATED: <Checked Date>
QUALITY CONTROL: <QC By>	DATED: <QC Date>
RELEASED: <Released By>	DATED: <Release Date>

D

C

B

A

6

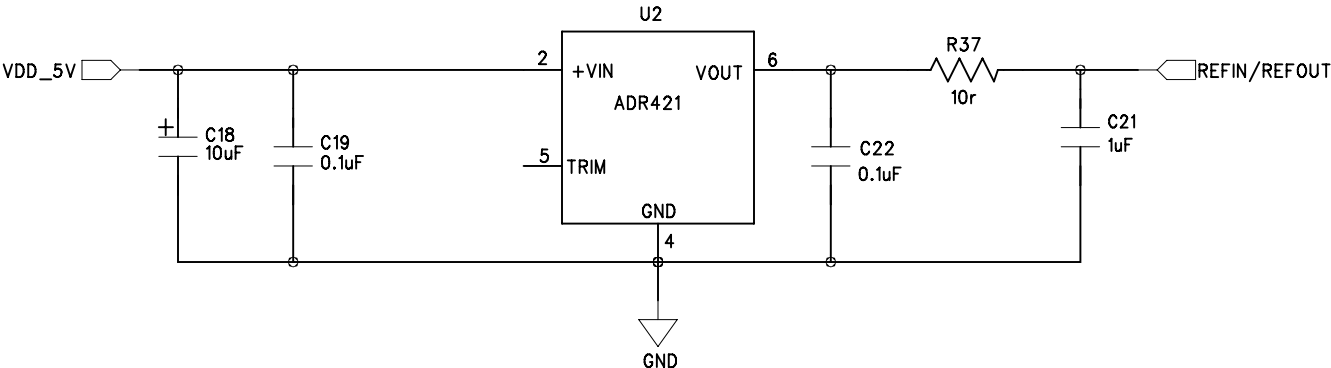
5

4

3

2

1



REVISION RECORD			
LTR	ECO NO:	APPROVED:	DATE:

D

C

B

A

DRAWN: Rob Finnerty	DATED: 23/03/15
CHECKED: <Checked By>	DATED: <Checked Date>
QUALITY CONTROL: <QC By>	DATED: <QC Date>
RELEASED: <Released By>	DATED: <Release Date>

COMPANY: ANALOG DEVICES			
TITLE: EVAL-AD7605-4SDZ			
CODE: <Code>	SIZE: A3	DRAWING NO: EVAL-AD7605-4SDZ	REV: A
SCALE: NTS			SHEET: 3 OF 5

6

5

4

3

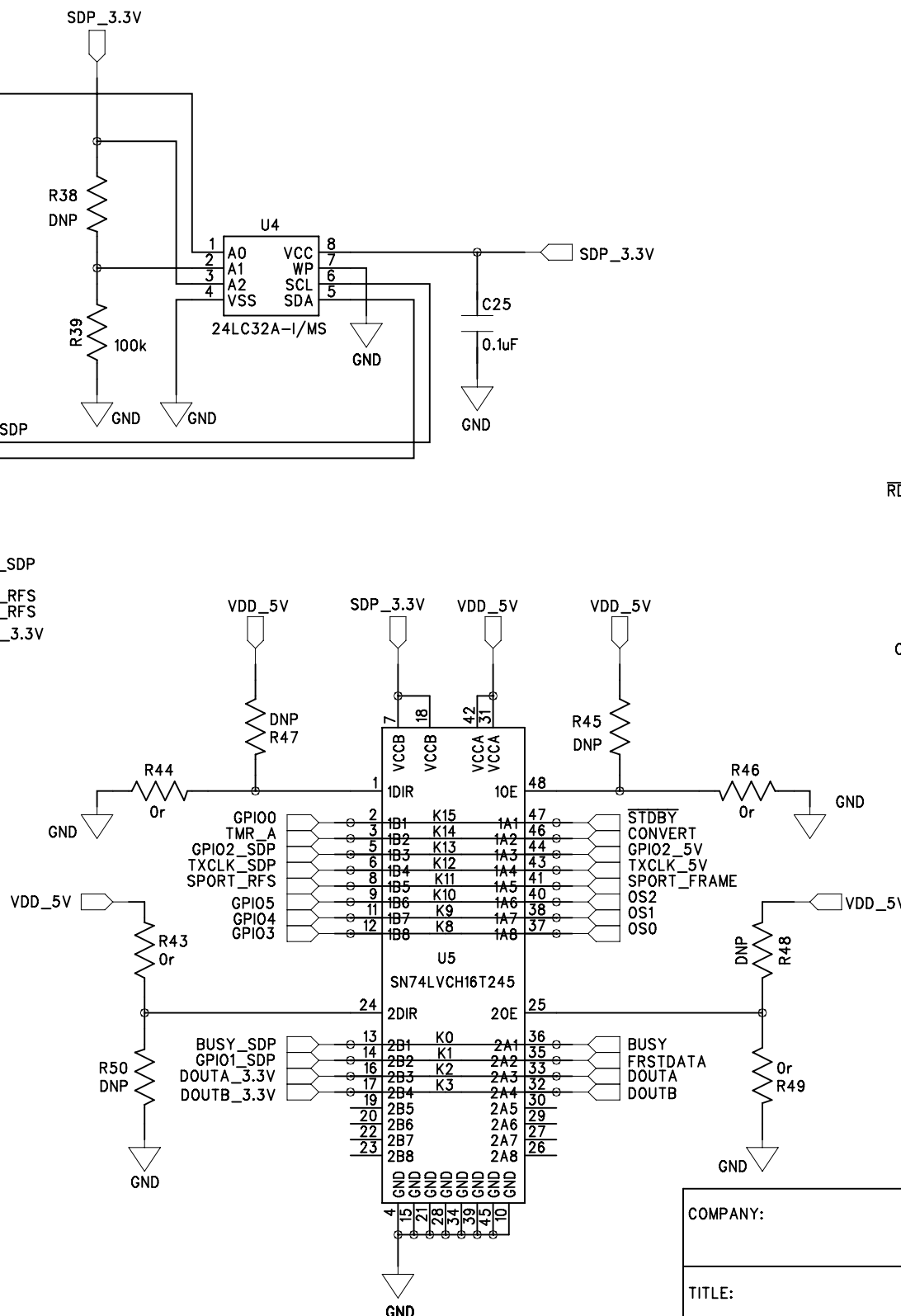
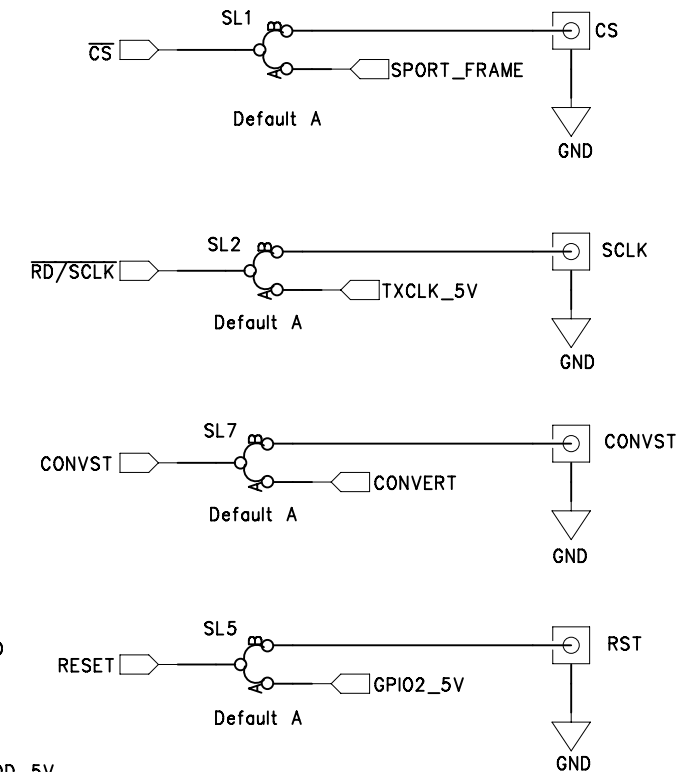
2

1

Board ID EEPROM (24LC32) must be on I2C bus 0,

REVISION RECORD

LTR	ECO NO:	APPROVED:	DATE:



COMPANY: ANALOG DEVICES				
TITLE: EVAL-AD7605-4SDZ				
DRAWN: Rob Finnerty	DATED: 23/03/15			
CHECKED: <Checked By>	DATED: <Checked Date>	CODE:	SIZE:	DRAWING NO:
QUALITY CONTROL: <QC By>	DATED: <QC Date>	<Code>	A3	EVAL-AD7605-4SDZ
RELEASED: <Released By>	DATED: <Release Date>	SHEET: 5 OF 5		

DRAWN: Rob Finnerty	DATED: 23/03/15
CHECKED: <Checked By>	DATED: <Checked Date>
QUALITY CONTROL: <QC By>	DATED: <QC Date>
RELEASED: <Released By>	DATED: <Release Date>