

6

5

4

3

2

1

REVISION RECORD			
LTR	ECO NO:	APPROVED:	DATE:

Resistors placed in locations between both ground planes for EMC purposes

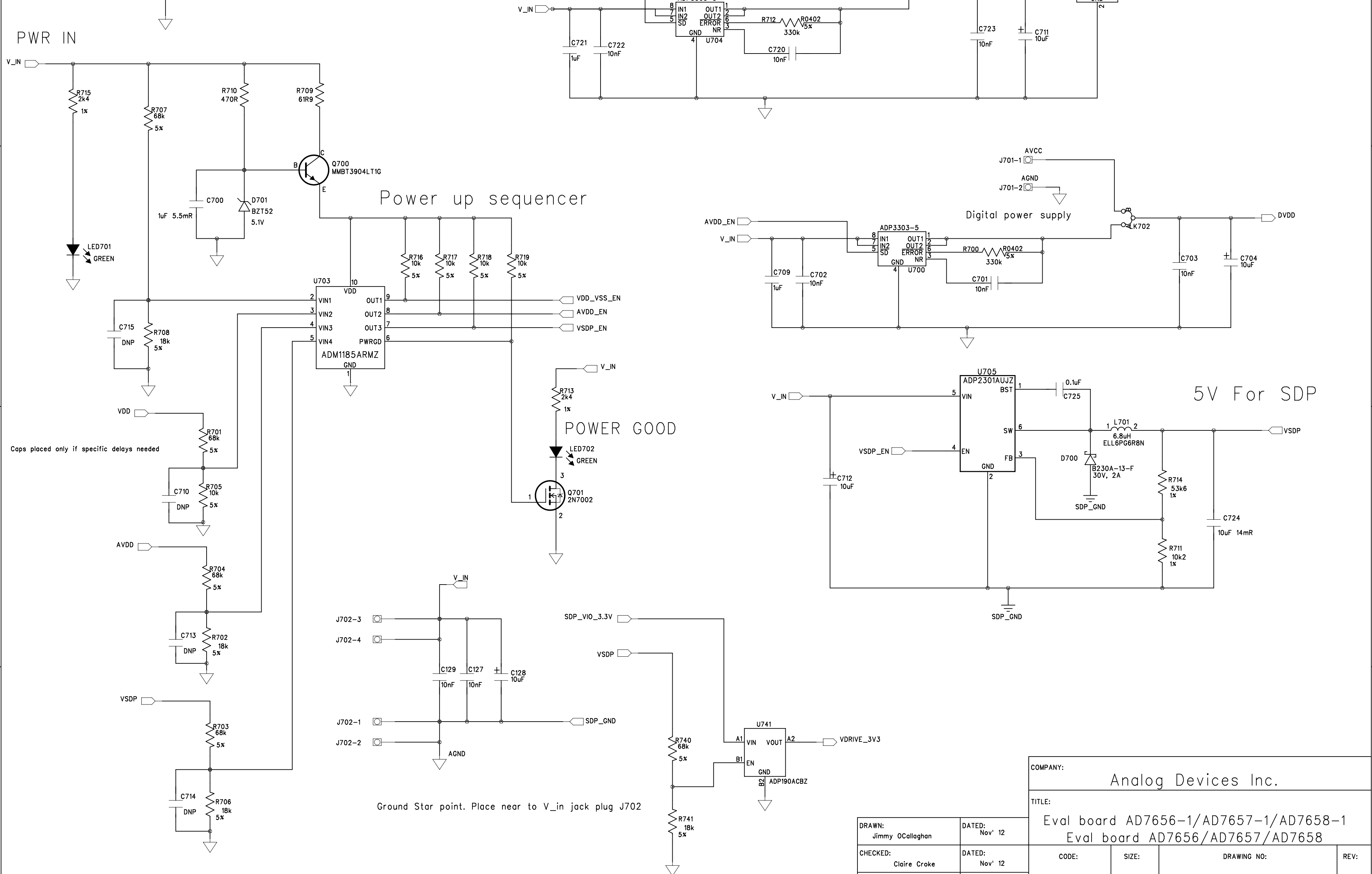
Analog power supply

Digital power supply

5V For SDP

POWER GOOD

Ground Star point. Place near to V_in jack plug J702



COMPANY: Analog Devices Inc.

TITLE: Eval board AD7656-1/AD7657-1/AD7658-1
Eval board AD7656/AD7657/AD7658

DRAWN: Jimmy OCallaghan	DATED: Nov' 12
CHECKED: Claire Croke	DATED: Nov' 12
QUALITY CONTROL: <QC By>	DATED: <QC Date>
RELEASED: <Released By>	DATED: <Release Date>

CODE:	SIZE:	DRAWING NO:	REV:
	C	EVAL-AD7656-1SDZ	D

6

5

4

3

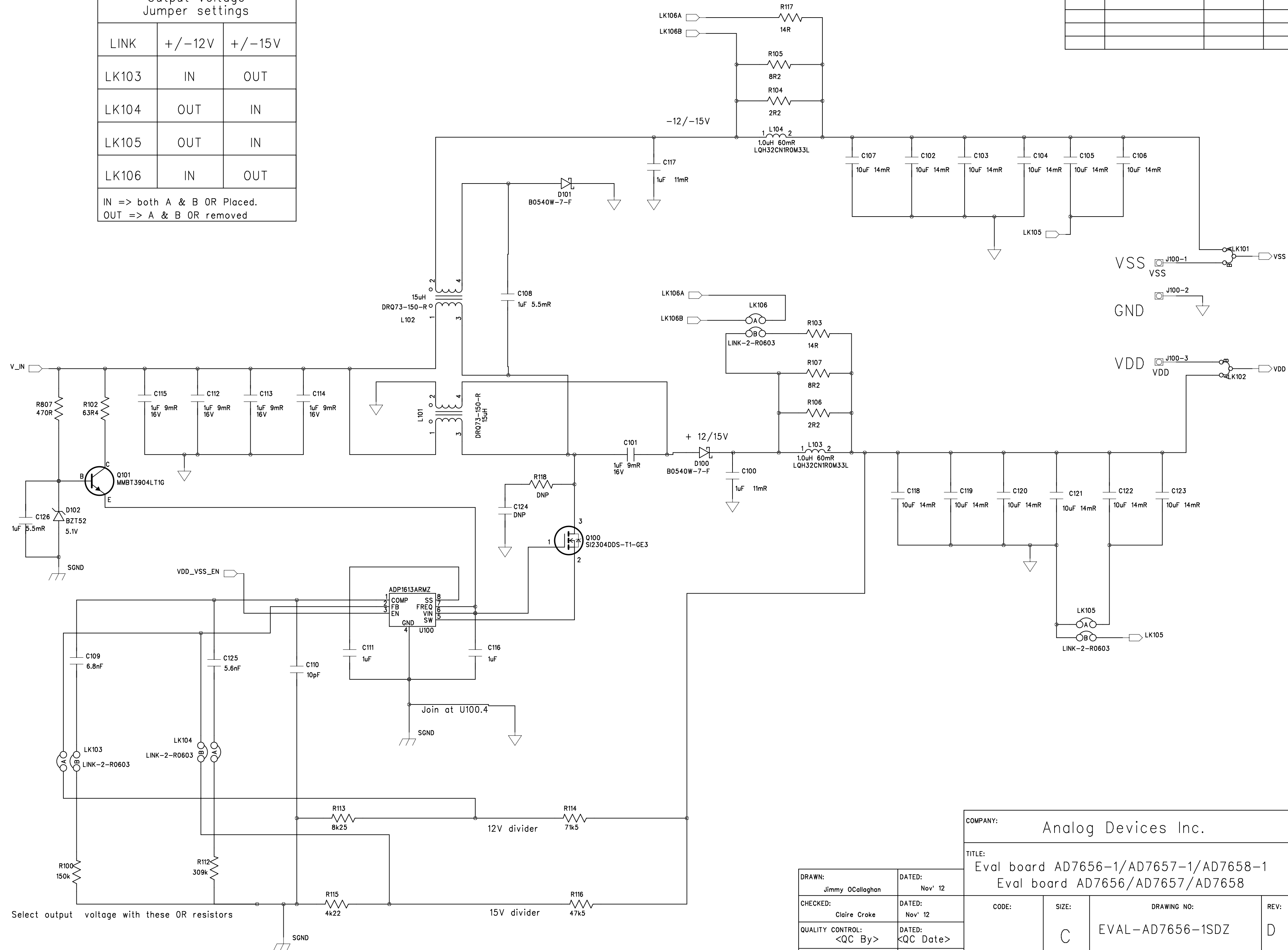
2

1

REVISION RECORD			
LTR	ECO NO:	APPROVED:	DATE:

Output voltage Jumper settings		
LINK	+/-12V	+/-15V
LK103	IN	OUT
LK104	OUT	IN
LK105	OUT	IN
LK106	IN	OUT

IN => both A & B OR Placed.
OUT => A & B OR removed



COMPANY: Analog Devices Inc.			
TITLE: Eval board AD7656-1/AD7657-1/AD7658-1 Eval board AD7656/AD7657/AD7658			
DRAWN: Jimmy O'Callaghan	DATED: Nov' 12	CODE: C	SIZE: D
CHECKED: Claire Croke	DATED: Nov' 12	DRAWING NO: EVAL-AD7656-1SDZ	REV: D
QUALITY CONTROL: <QC By>	DATED: <QC Date>	SHEET: 2 OF 5	
RELEASED: <Released By>	DATED: <Release Date>	SCALE: <Scale>	

Select output voltage with these OR resistors

12V divider

15V divider

D

C

B

A

D

C

B

A

6

5

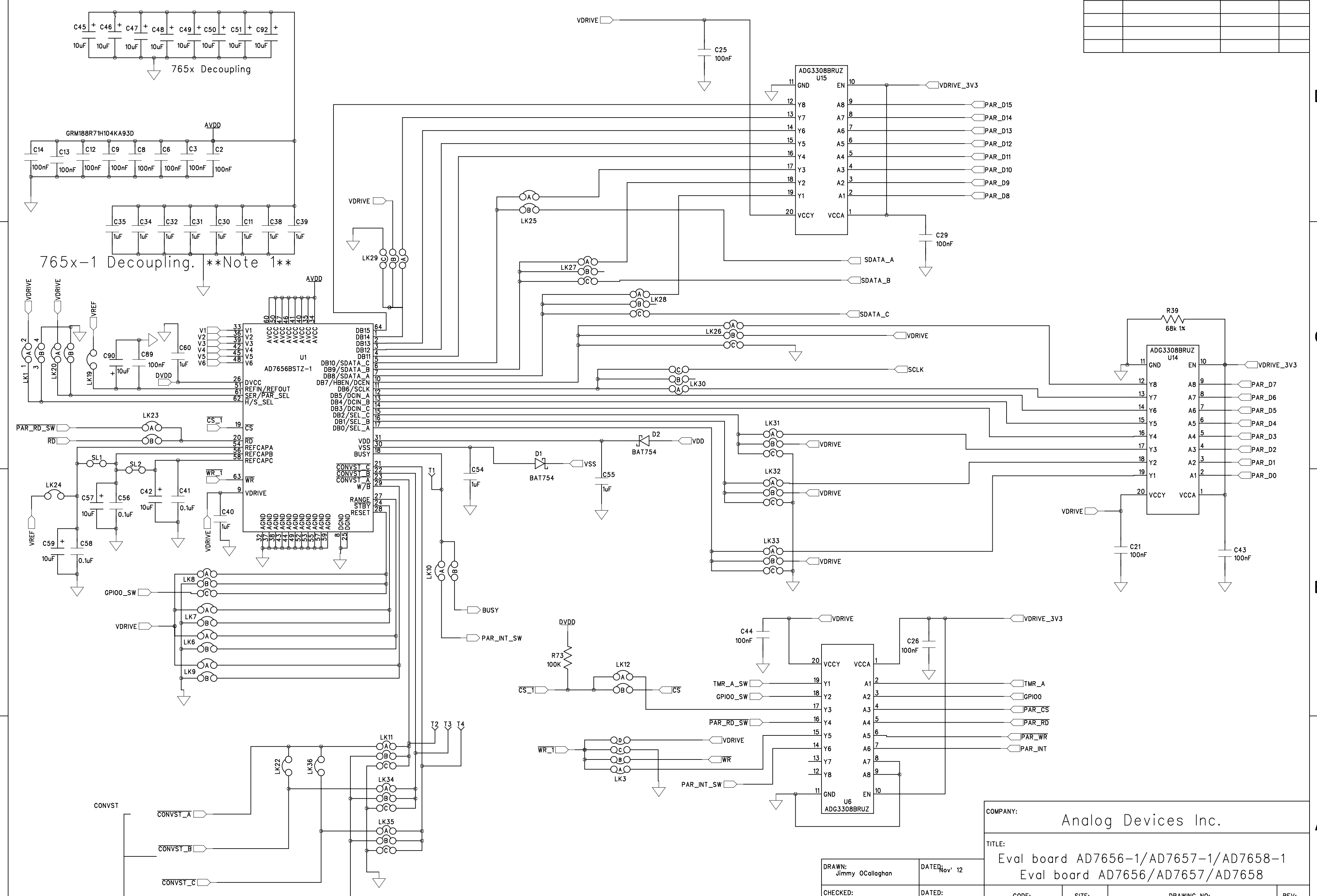
4

3

2

1

REVISION RECORD			
LTR	ECO NO:	APPROVED:	DATE:



NOTE1
 For the EVAL-AD765xSDZ boards use the following cap for C11,30-32, 34,35,38,39
 JOHANSON DIELECTRICS - 6R3R15X476MV4E - MLCC, 0805, X5R, 6.3V, 47UF
 FEC 1886100

DRAWN: Jimmy O'Callaghan	DATED: Nov' 12
CHECKED: Claire Croke	DATED: Nov' 12
QUALITY CONTROL:	DATED:
RELEASED: 1 4	DATED:

COMPANY: Analog Devices Inc.			
TITLE: Eval board AD7656-1/AD7657-1/AD7658-1 Eval board AD7656/AD7657/AD7658			
CODE:	SIZE: C	DRAWING NO: EVAL-AD7656-1SDZ	REV: D
SCALE: <Scale>			SHEET: 3 OF 5

6

5

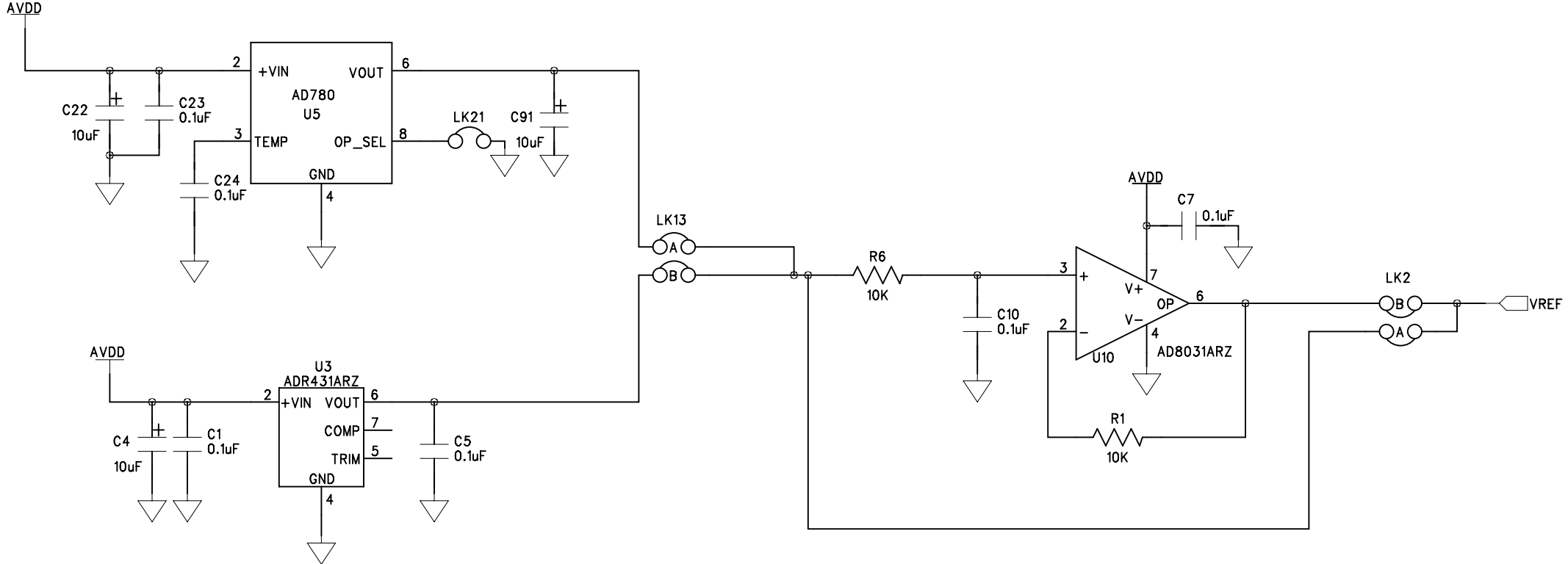
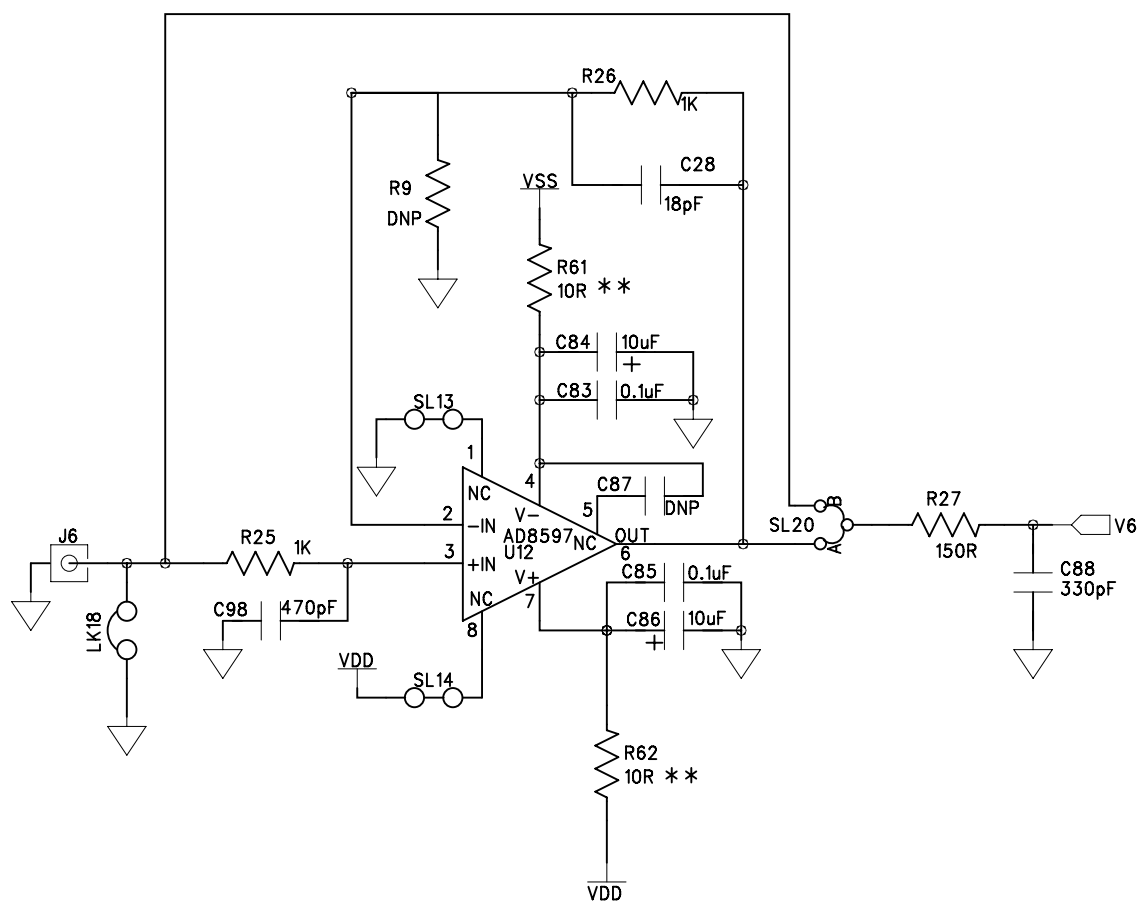
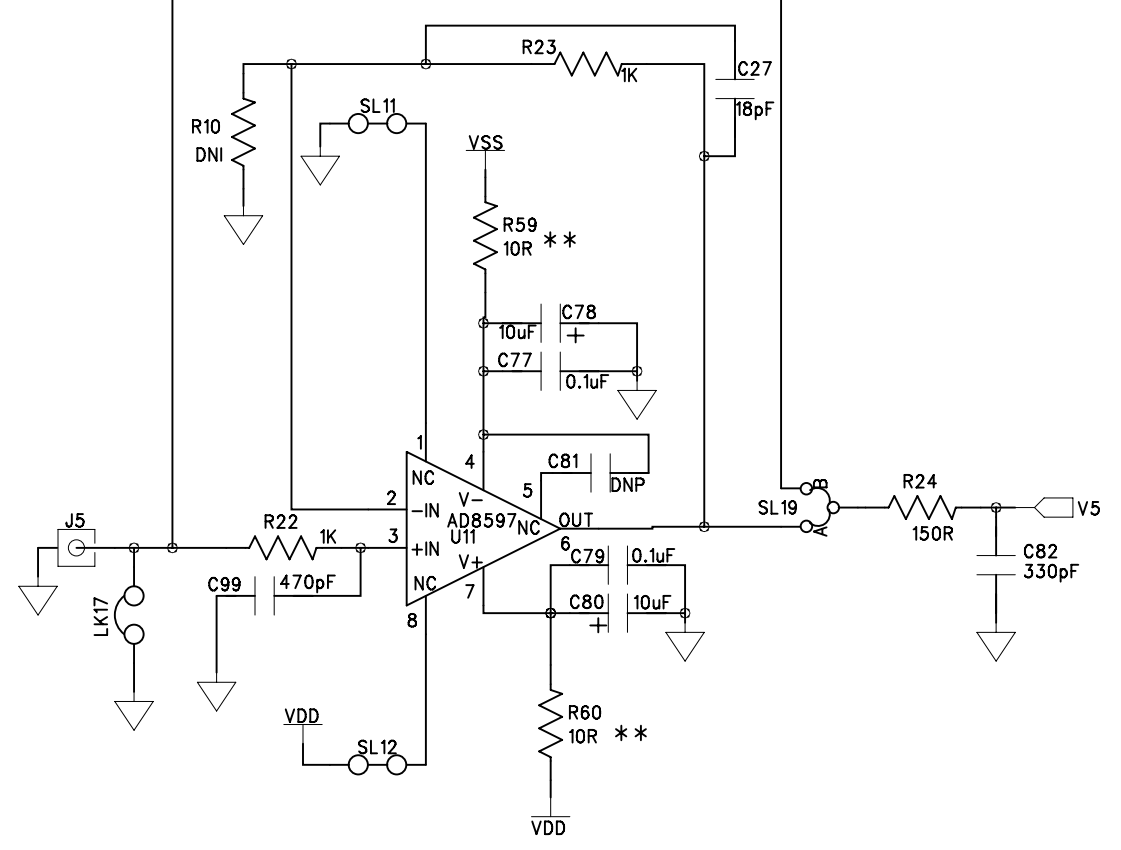
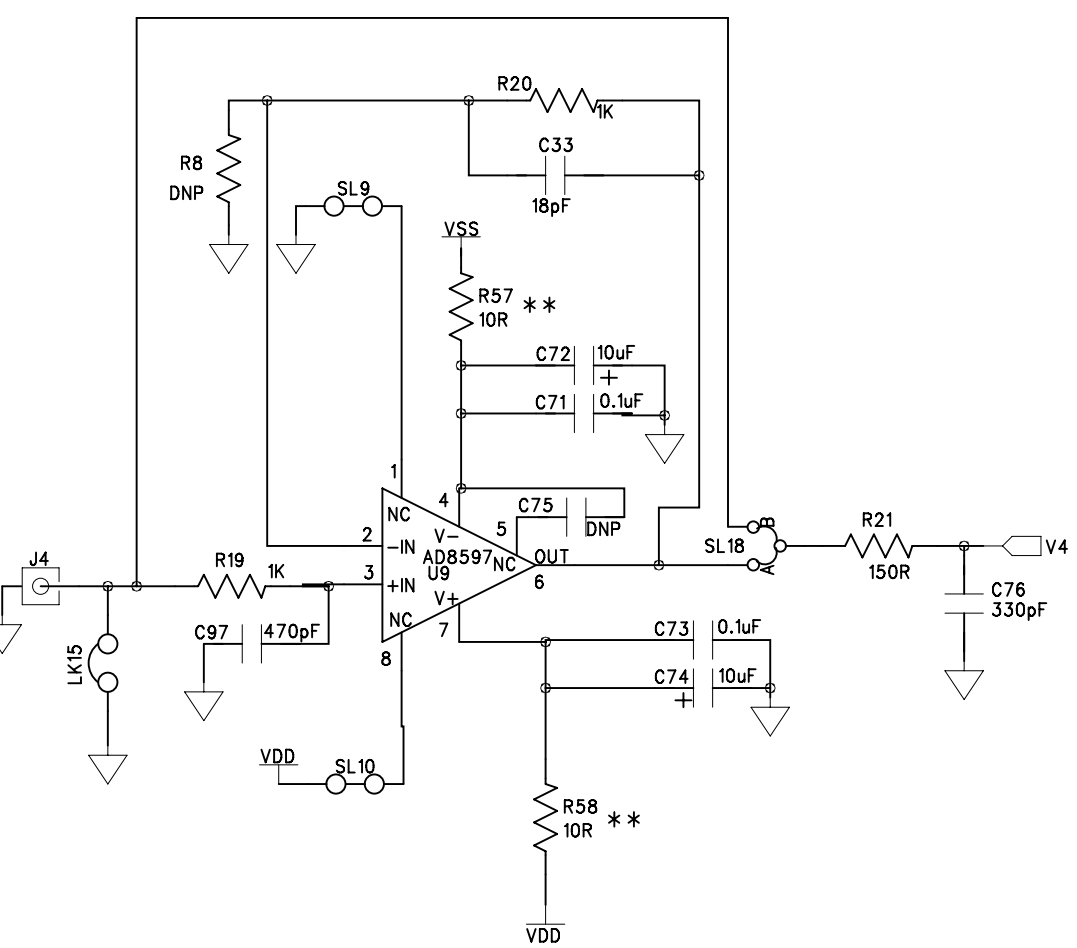
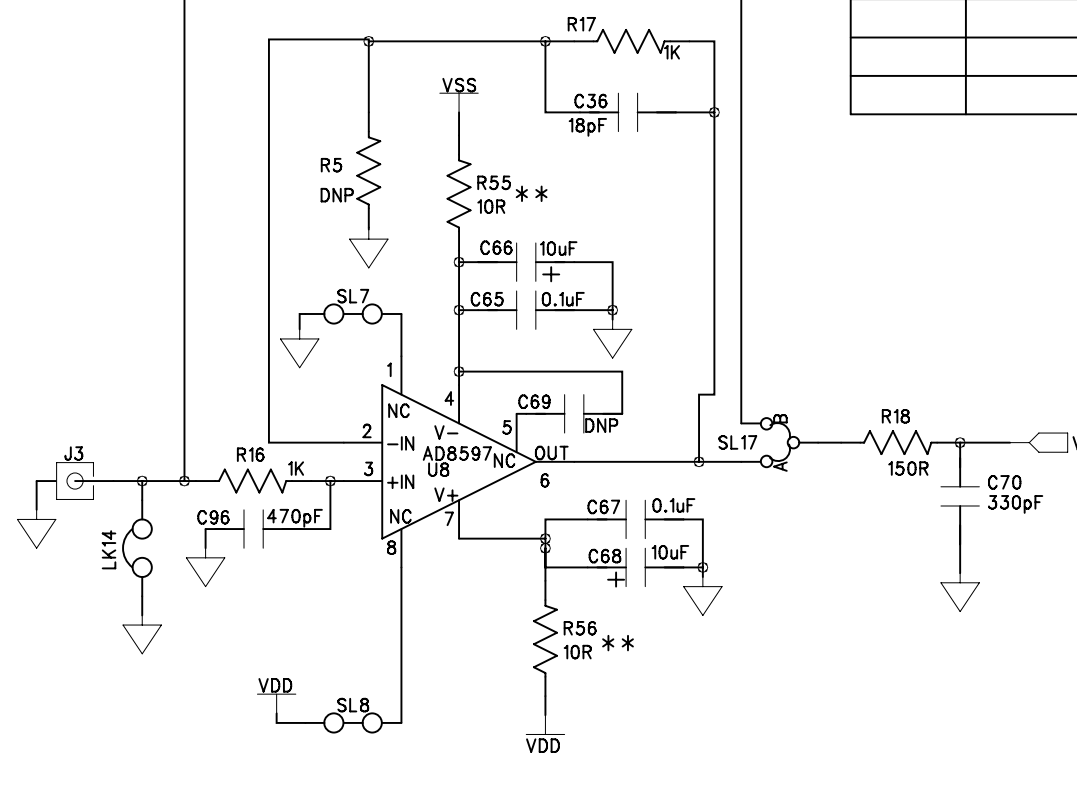
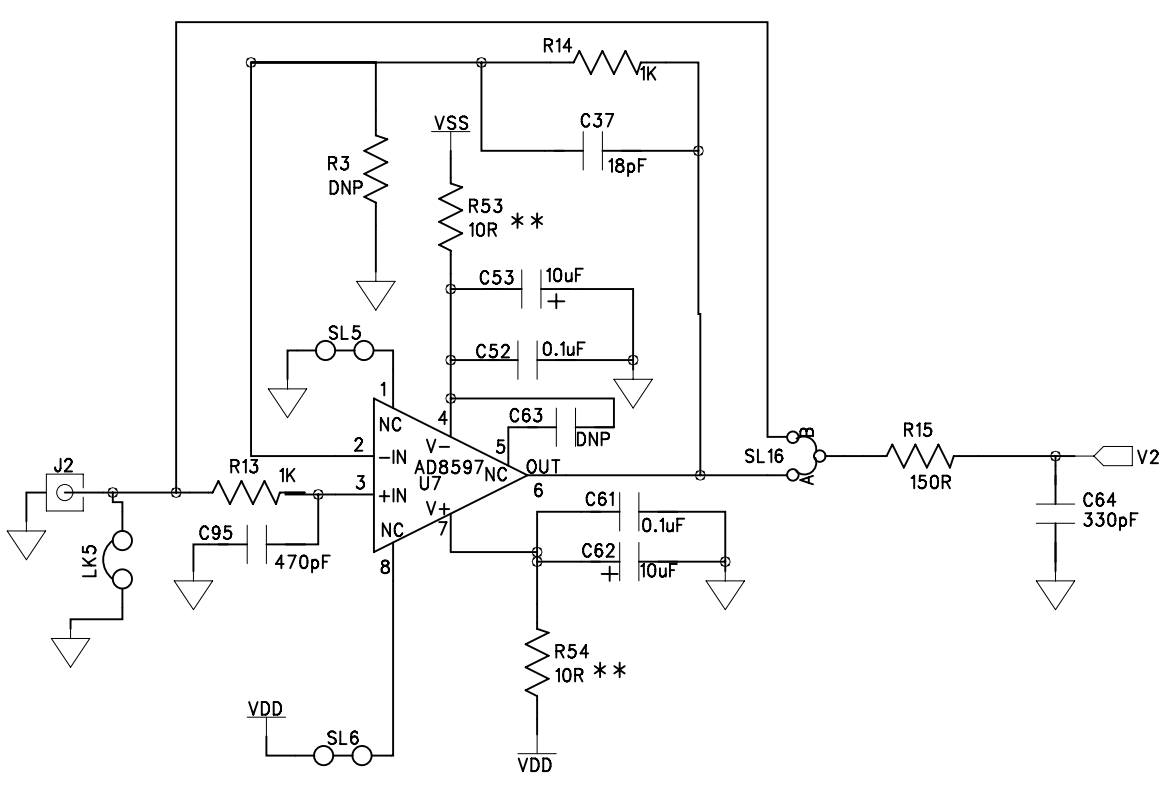
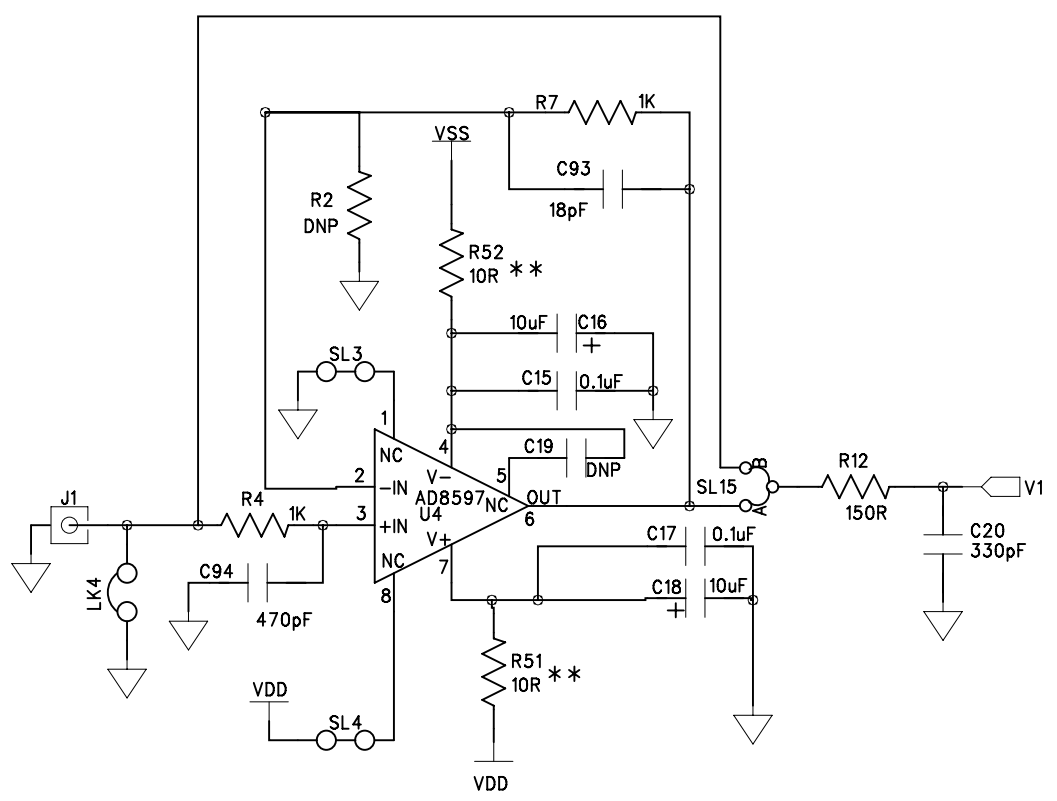
4

3

2

1

REVISION RECORD			
LTR	ECO NO:	APPROVED:	DATE:



COMPANY: Analog Devices Inc.

TITLE: Eval board AD7656-1/AD7657-1/AD7658-1
Eval board AD7656/AD7657/AD7658

DRAWN: Jimmy O'Colloghan	DATED: Nov '12
CHECKED: Claire Croke	DATED: Nov '12
QUALITY CONTROL: <QC By>	DATED: <QC Date>
RELEASED: <Released By>	DATED: <Release Date>

CODE:	SIZE: C	DRAWING NO: EVAL-AD7656-1SDZ	REV: D
-------	------------	---------------------------------	-----------

6

5

4

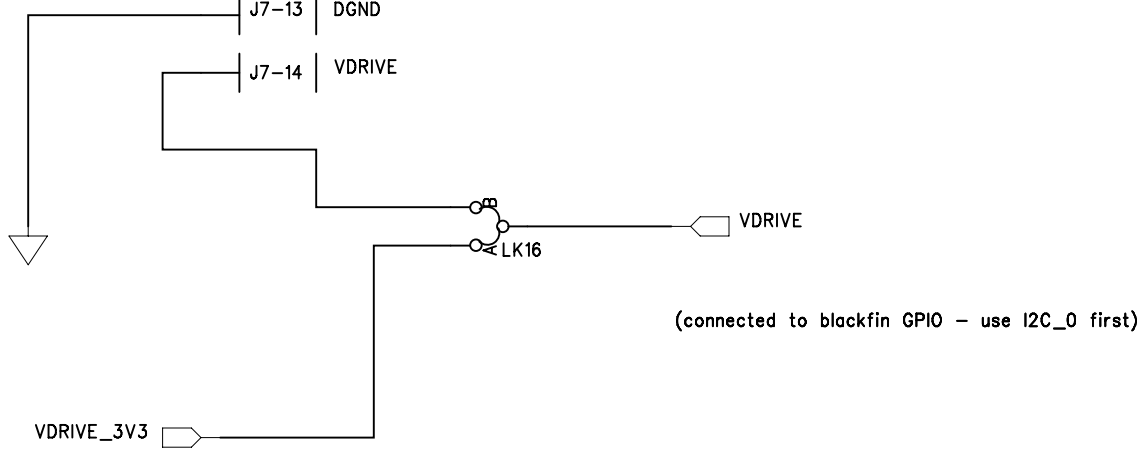
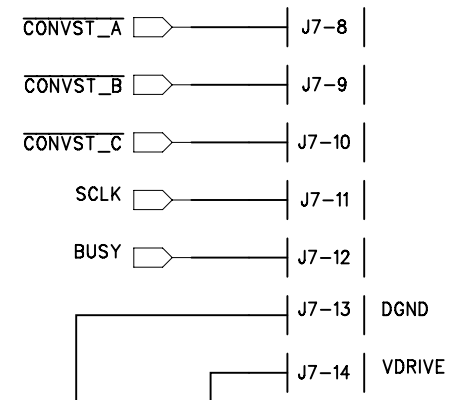
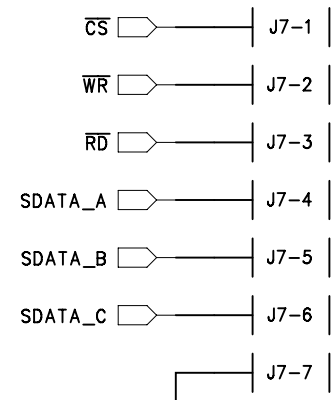
3

2

1

REVISION RECORD			
LTR	ECO NO:	APPROVED:	DATE:

14 pin header pin. (2x7 layout)

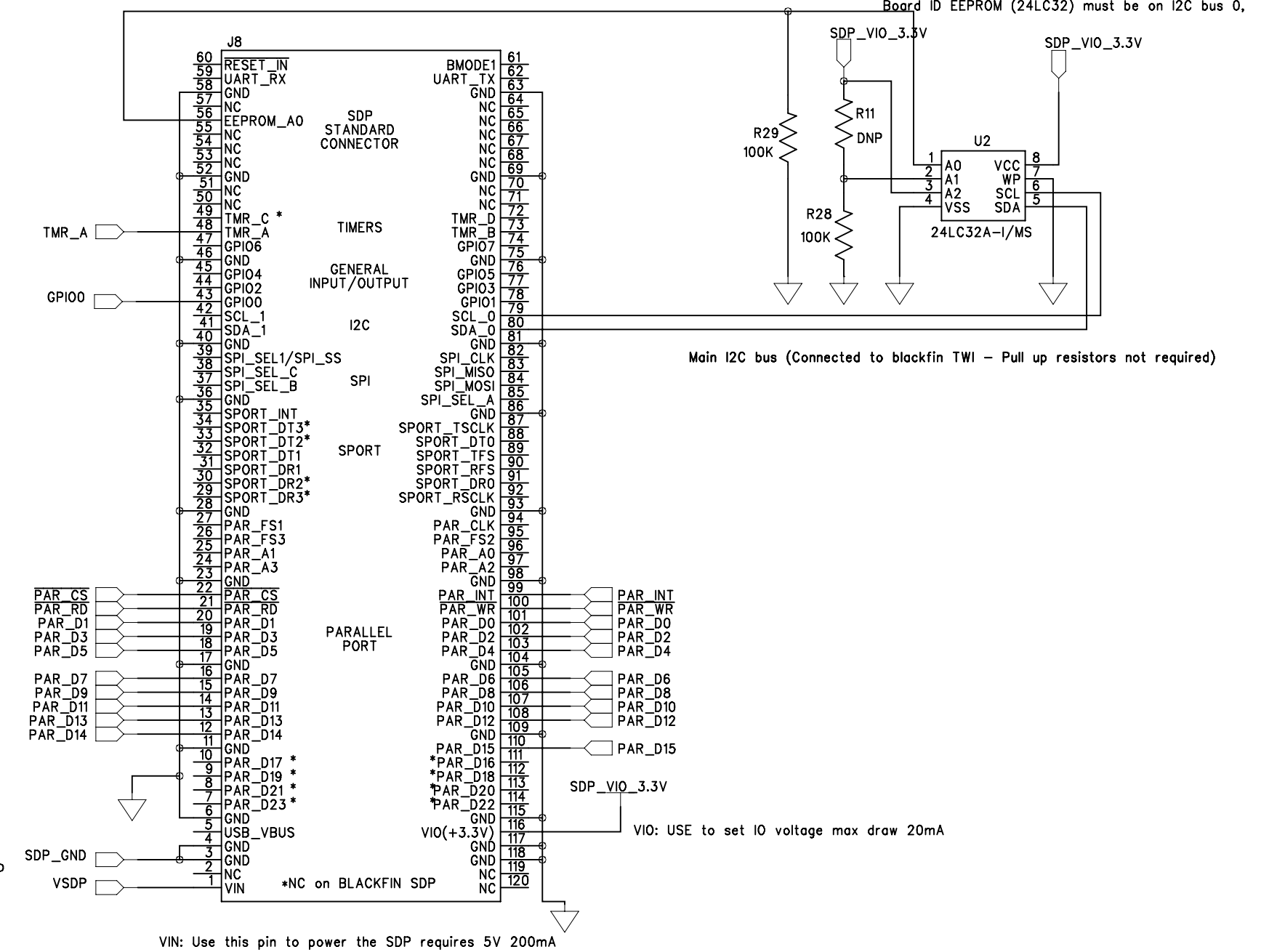


Use SDP_GND as return for VSDP

I2C bus 1 is common across both connectors on SDP - Pull up resistors required

BMODE1: Pull up with a 10K resistor to set SDP to boot from a SPI FLASH on the daughter board

Board ID EEPROM (24LC32) must be on I2C bus 0,



D

D

C

C

B

B

A

A

COMPANY: Analog Devices Inc.			
TITLE: Eval board AD7656-1/AD7657-1/AD7658-1 Eval board AD7656/AD7657/AD7658			
DRAWN: Jimmy O'Callaghan	DATED: Nov' 12	CODE:	REV: D
CHECKED: Claire Croke	DATED: Nov' 12	SIZE: C	DRAWING NO: EVAL-AD7656-1SDZ
QUALITY CONTROL: <QC By>	DATED: <QC Date>	SHEET: 5 OF 5	
RELEASED: <Released By>	DATED: <Release Date>	SCALE: <Scale>	