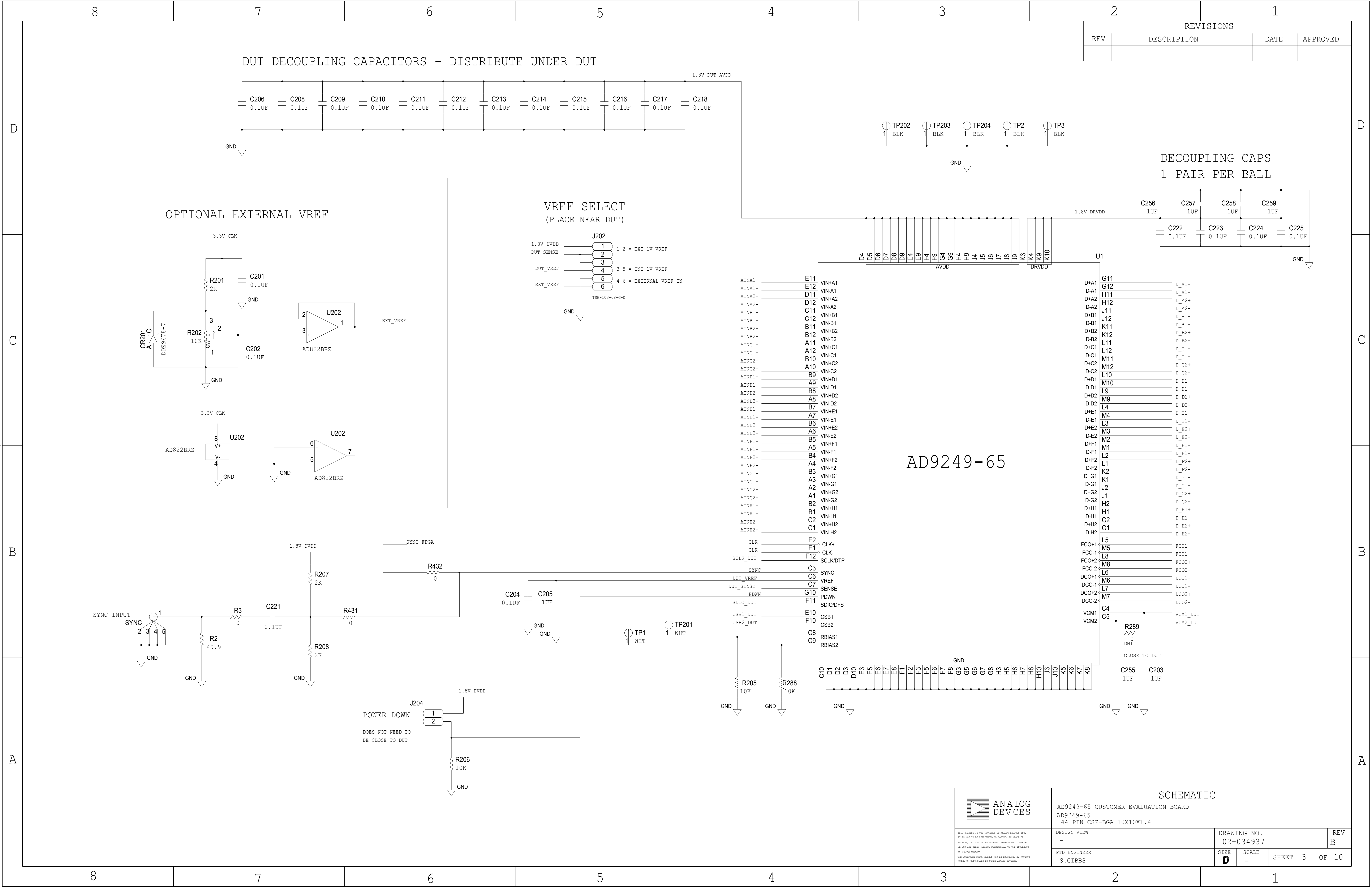
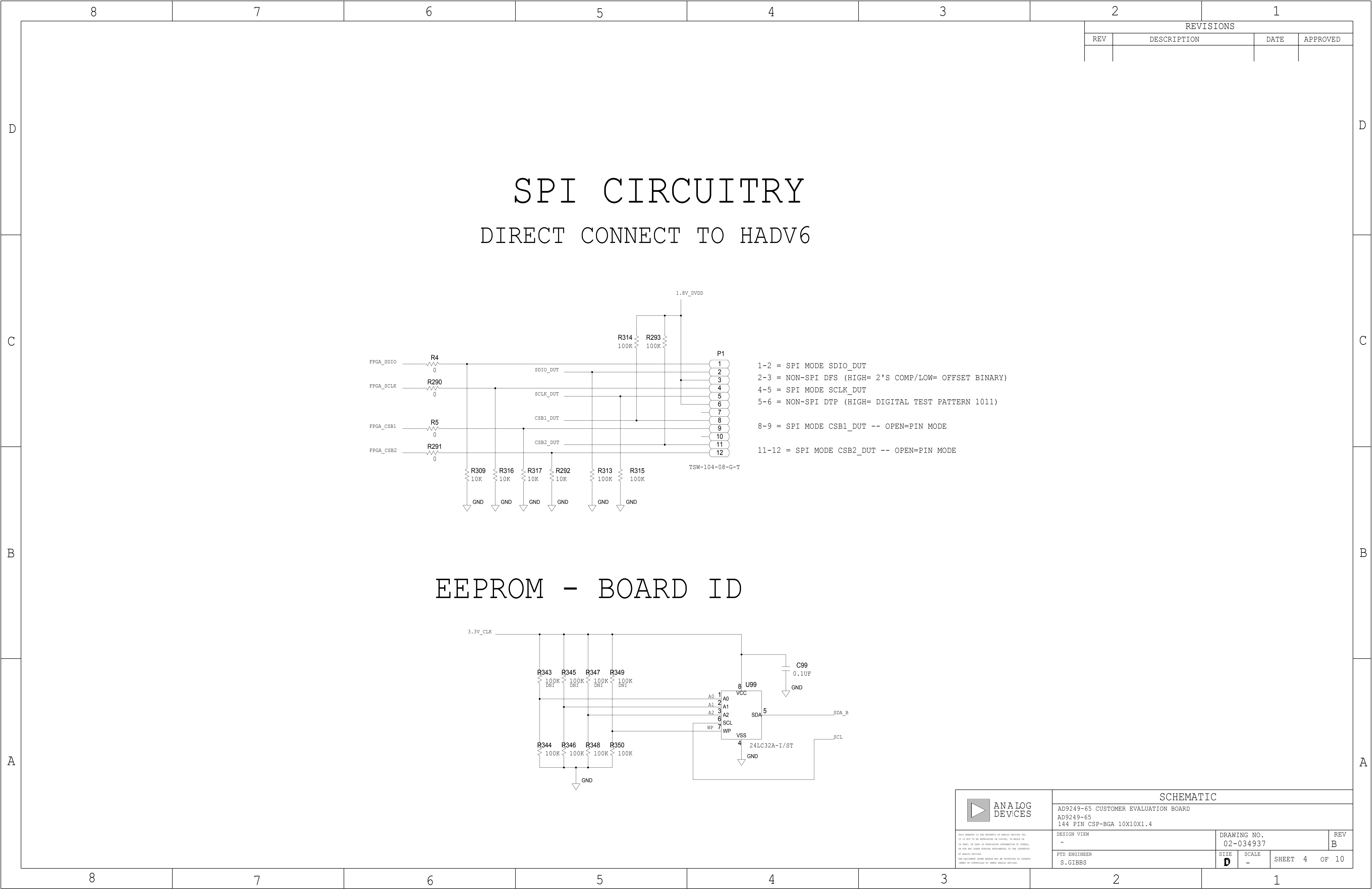


	8	7	6	5	4	3	2	1																																														
D	THIS DRAWING IS THE PROPERTY OF ANALOG DEVICES INC. IT IS NOT TO BE REPRODUCED OR COPIED, IN WHOLE OR IN PART, OR USED IN FURNISHING INFORMATION TO OTHERS, OR FOR ANY OTHER PURPOSE DETRIMENTAL TO THE INTERESTS OF ANALOG DEVICES. THE EQUIPMENT SHOWN HEREON MAY BE PROTECTED BY PATENTS OWNED OR CONTROLLED BY ANALOG DEVICES.				<table border="1"><tr><th colspan="3">JUMPER TABLE</th></tr><tr><th>JP#</th><th>ON</th><th>OFF</th></tr><tr><td>1</td><td></td><td></td></tr><tr><td>2</td><td></td><td></td></tr><tr><td>3</td><td></td><td></td></tr><tr><td>4</td><td></td><td></td></tr><tr><td>5</td><td></td><td></td></tr></table> * SEE ASSEMBLY INSTRUCTIONS			JUMPER TABLE			JP#	ON	OFF	1			2			3			4			5			<table border="1"><tr><th colspan="4">REVISIONS</th></tr><tr><th>REV</th><th>DESCRIPTION</th><th>DATE</th><th>APPROVED</th></tr><tr><td>A</td><td>INITIAL RELEASE</td><td>08/12</td><td>S.G.</td></tr><tr><td>B</td><td>ECR-040692</td><td>01/13</td><td>S.G.</td></tr><tr><td>C</td><td>ECR-043384</td><td>09/13</td><td>DML</td></tr></table>				REVISIONS				REV	DESCRIPTION	DATE	APPROVED	A	INITIAL RELEASE	08/12	S.G.	B	ECR-040692	01/13	S.G.	C	ECR-043384	09/13	DML		
JUMPER TABLE																																																						
JP#	ON	OFF																																																				
1																																																						
2																																																						
3																																																						
4																																																						
5																																																						
REVISIONS																																																						
REV	DESCRIPTION	DATE	APPROVED																																																			
A	INITIAL RELEASE	08/12	S.G.																																																			
B	ECR-040692	01/13	S.G.																																																			
C	ECR-043384	09/13	DML																																																			
C	RELAY CONTROL CHART																																																					
	CONTROL	CODE	DEVICE	FUNCTION	CONNECTOR																																																	
B																																																						
A						<table border="1"><tr><td>TEMPLATE ENGINEER -</td><td>DATE</td><td colspan="2">SCHEMATIC</td><td></td></tr><tr><td>HARDWARE SERVICES -</td><td></td><td colspan="3" rowspan="6">AD9249-65 CUSTOMER EVALUATION BOARD</td></tr><tr><td>HARDWARE SYSTEMS -</td><td></td></tr><tr><td>TEST ENGINEER -</td><td></td></tr><tr><td>COMPONENT ENGINEER -</td><td></td></tr><tr><td>TEST PROCESS -</td><td></td></tr><tr><td>HARDWARE RELEASE -</td><td></td></tr><tr><td>DESIGNER J.FALLON</td><td>08/12</td><td>MASTER PROJECT TEMPLATE -</td><td>TESTER TEMPLATE -</td><td colspan="2">DRAWING NO.</td><td>REV.</td></tr><tr><td>PTD ENGINEER S.GIBBS</td><td>08/12</td><td colspan="2">UNLESS OTHERWISE SPECIFIED DIMENSIONS ARE IN INCHES</td><td colspan="2">TOLERANCES</td><td colspan="2">02-034937</td><td>B</td></tr><tr><td>CHECKER -</td><td></td><td colspan="2">DECIMALS X.XX +-0.010 FRACTIONS X.XXX +-0.005</td><td colspan="2">ANGLES +-1/32 ++2</td><td>SIZE D</td><td>SCALE -</td><td>CODE ID NO. -</td><td>SHEET 1 OF 10</td></tr></table>			TEMPLATE ENGINEER -	DATE	SCHEMATIC			HARDWARE SERVICES -		AD9249-65 CUSTOMER EVALUATION BOARD			HARDWARE SYSTEMS -		TEST ENGINEER -		COMPONENT ENGINEER -		TEST PROCESS -		HARDWARE RELEASE -		DESIGNER J.FALLON	08/12	MASTER PROJECT TEMPLATE -	TESTER TEMPLATE -	DRAWING NO.		REV.	PTD ENGINEER S.GIBBS	08/12	UNLESS OTHERWISE SPECIFIED DIMENSIONS ARE IN INCHES		TOLERANCES		02-034937		B	CHECKER -		DECIMALS X.XX +-0.010 FRACTIONS X.XXX +-0.005		ANGLES +-1/32 ++2		SIZE D	SCALE -	CODE ID NO. -	SHEET 1 OF 10
	TEMPLATE ENGINEER -	DATE	SCHEMATIC																																																			
	HARDWARE SERVICES -		AD9249-65 CUSTOMER EVALUATION BOARD																																																			
	HARDWARE SYSTEMS -																																																					
	TEST ENGINEER -																																																					
	COMPONENT ENGINEER -																																																					
	TEST PROCESS -																																																					
	HARDWARE RELEASE -																																																					
	DESIGNER J.FALLON	08/12	MASTER PROJECT TEMPLATE -	TESTER TEMPLATE -	DRAWING NO.		REV.																																															
	PTD ENGINEER S.GIBBS	08/12	UNLESS OTHERWISE SPECIFIED DIMENSIONS ARE IN INCHES		TOLERANCES		02-034937		B																																													
CHECKER -		DECIMALS X.XX +-0.010 FRACTIONS X.XXX +-0.005		ANGLES +-1/32 ++2		SIZE D	SCALE -	CODE ID NO. -	SHEET 1 OF 10																																													
	P.O SPEC.	BK/BD SPEC.	SOCKET OEM	OEM PART#	HANDLER																																																	
	8	7	6	5	4	3	2	1																																														







1-2 = SPI MODE SDIO\_DUT

2-3 = NON-SPI DFS (HIGH= 2'S COMP/LOW= OFFSET BINARY)

4-5 = SPI MODE SCLK\_DUT

5-6 = NON-SPI DTP (HIGH= DIGITAL TEST PATTERN 1011)

8-9 = SPI MODE CSB1\_DUT -- OPEN=PIN MODE

11-12 = SPI MODE CSB2\_DUT -- OPEN=PIN MODE

EEPROM - BOARD ID

3.3V\_CLK

R343

100K

DNI

R345

100K

DNI

R347

100K

DNI

R349

100K

DNI

R344

100K

GND

R346

100K

GND

R348

100K

GND

R350

100K

GND

A0

1

A1

2

A2

3

SCL

6

WP

7

VCC

8

VSS

4

U99

24LC32A-I/ST

C99

0.1UF

GND

SDA\_B

5

SCL

ANALOG

DEVICES

THIS DRAWING IS THE PROPERTY OF ANALOG DEVICES INC.

IT IS NOT TO BE REPRODUCED OR COPIED, IN WHOLE OR

IN PART, OR USED IN PROPAGATING INFORMATION TO OTHERS,

OR FOR ANY OTHER PURPOSE DETRIMENTAL TO THE INTERESTS

OF ANALOG DEVICES.

THE EQUIPMENT DESIGN HEREON MAY BE PROTECTED BY PATENTS

OWNED OR CONTROLLED BY ANALOG DEVICES.

SCHEMATIC

AD9249-65 CUSTOMER EVALUATION BOARD

AD9249-65

144 PIN CSP-BGA 10X10X1.4

DESIGN VIEW

-

DRAWING NO.

02-034937

REV

B

PTD ENGINEER

S.GIBBS

SIZE

D

SCALE

-

SHEET

4

OF

10

