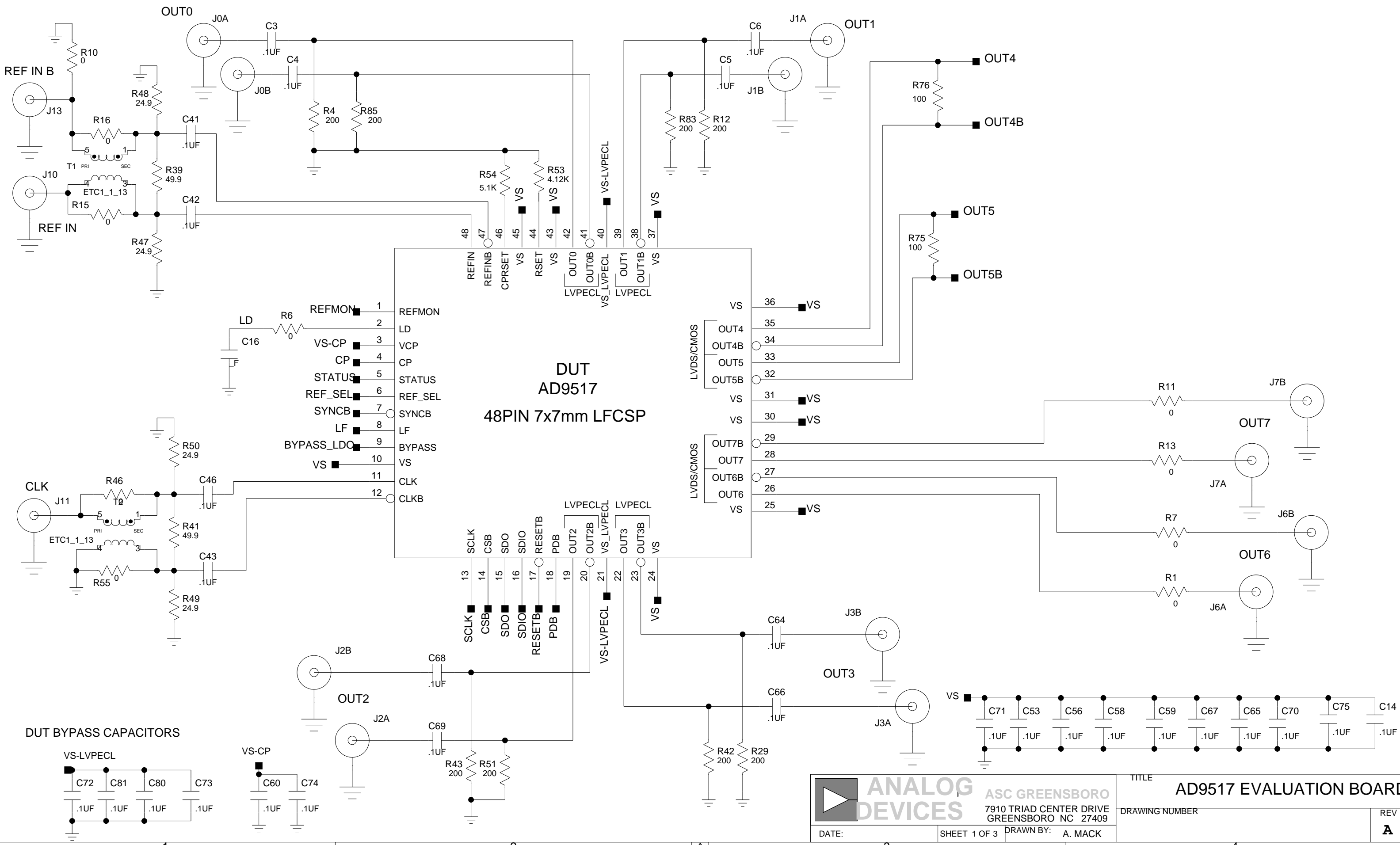


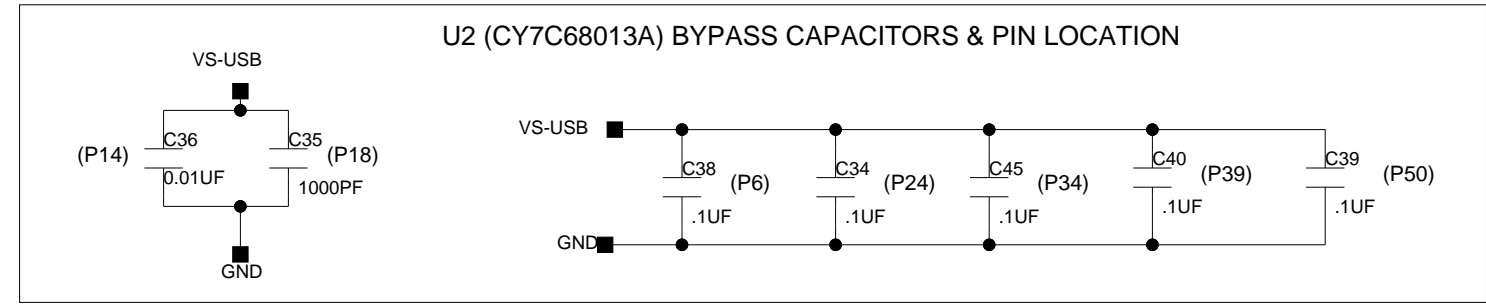
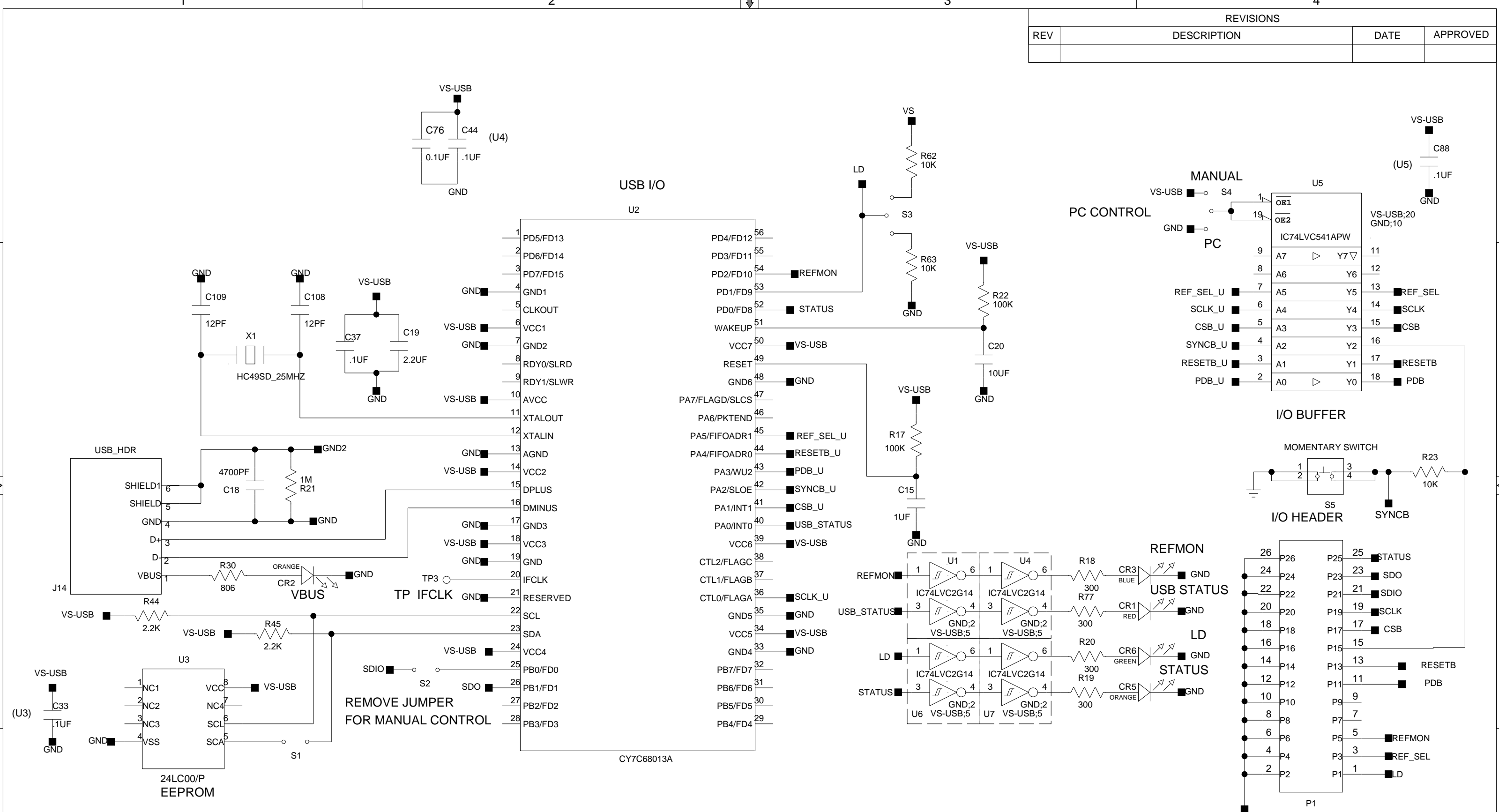
SOME TERMINATION COMPONENTS ARE OPTIONAL ONLY.  
REFER TO BOM(S) FOR TYPICAL COMPONENT INSTALLATION INFORMATION.

REVISIONS			
REV	DESCRIPTION	DATE	APPROVED
A	INITIAL RELEASE	20OCT06	P.Nelson



	<b>ASC GREENSBORO</b> 7910 TRIAD CENTER DRIVE GREENSBORO NC 27409	TITLE <b>AD9517 EVALUATION BOARD</b>
	DATE:	SHEET 1 OF 3
		DRAWING NUMBER
		REV <b>A</b>

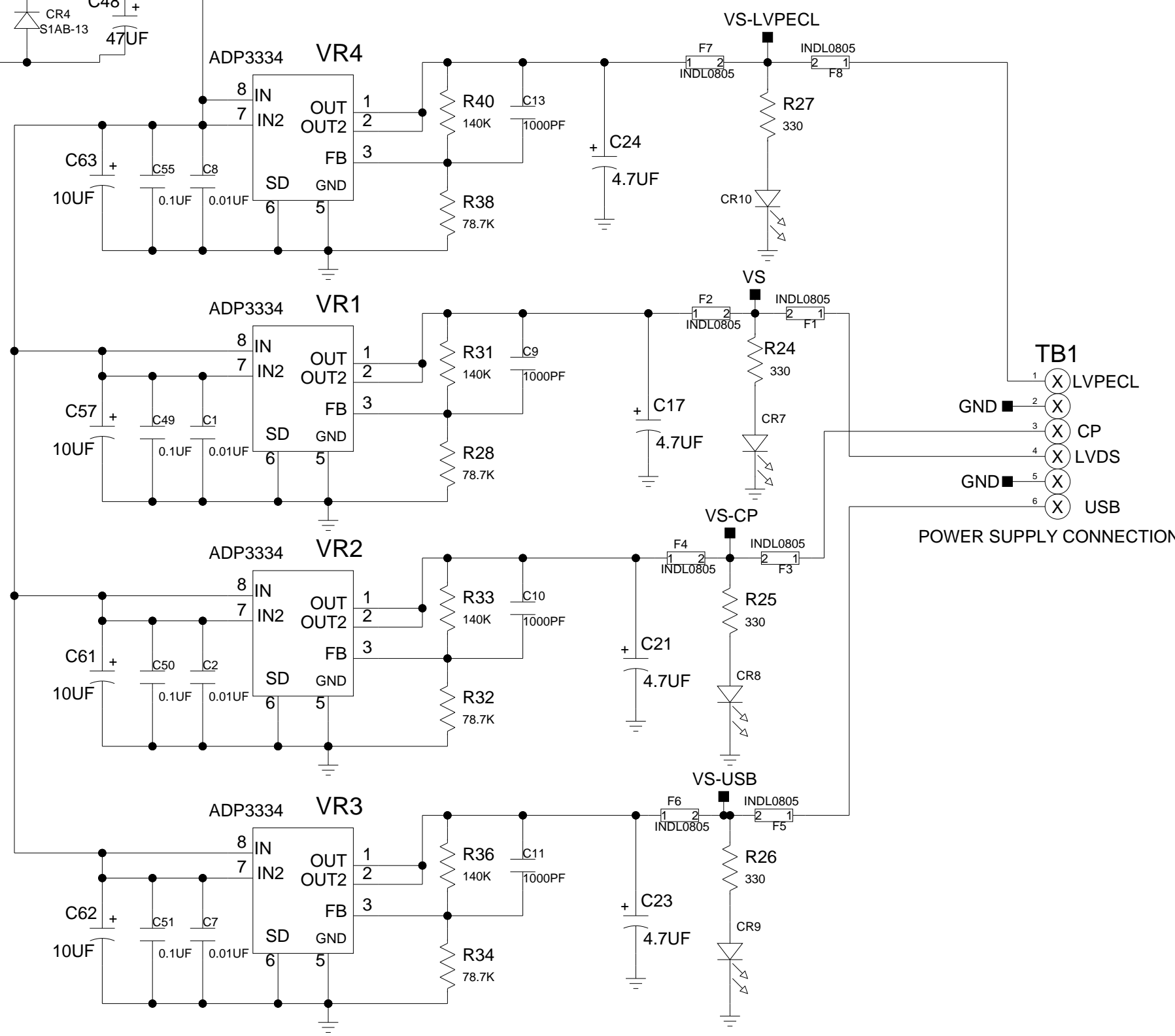
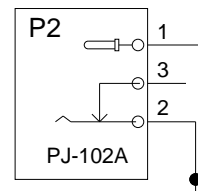
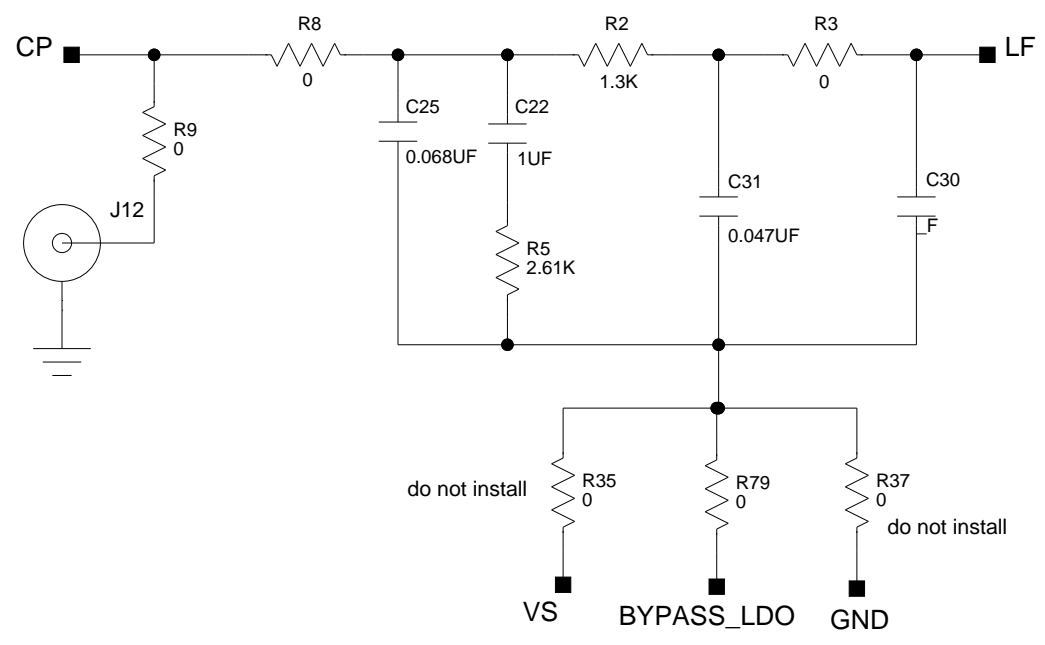
REVISIONS			
REV	DESCRIPTION	DATE	APPROVED



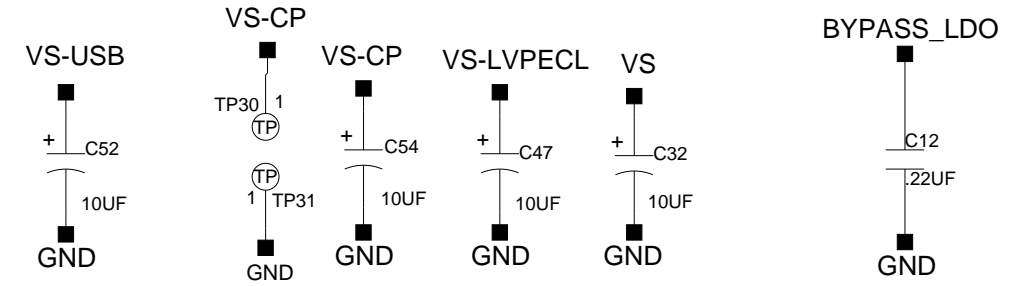
	<b>ASC GREENSBORO</b> 7910 TRIAD CENTER DRIVE GREENSBORO NC 27409	<b>TITLE</b> AD9517 EVALUATION BOARD
	<b>DATE:</b>	<b>SHEET 2 OF 3</b>
<b>DATE:</b>	<b>DRAWN BY:</b> W. CLARK	<b>REV</b> A

REVISIONS			
REV	DESCRIPTION	DATE	APPROVED

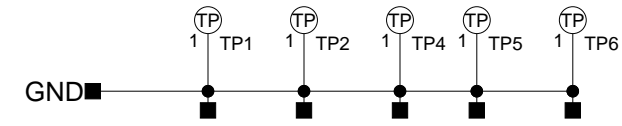
CHARGE PUMP FILTER




POWER SUPPLY BYPASS CAPACITORS



TEST POINT GROUNDS





**ANALOG DEVICES**

**ASC GREENSBORO**  
7910 TRIAD CENTER DRIVE  
GREENSBORO NC 27409

TITLE: **AD9517 EVALUATION BOARD**

DRAWING NUMBER: \_\_\_\_\_

REV: **A**

DATE: \_\_\_\_\_

SHEET 3 OF 3

DRAWN BY: W. CLARK