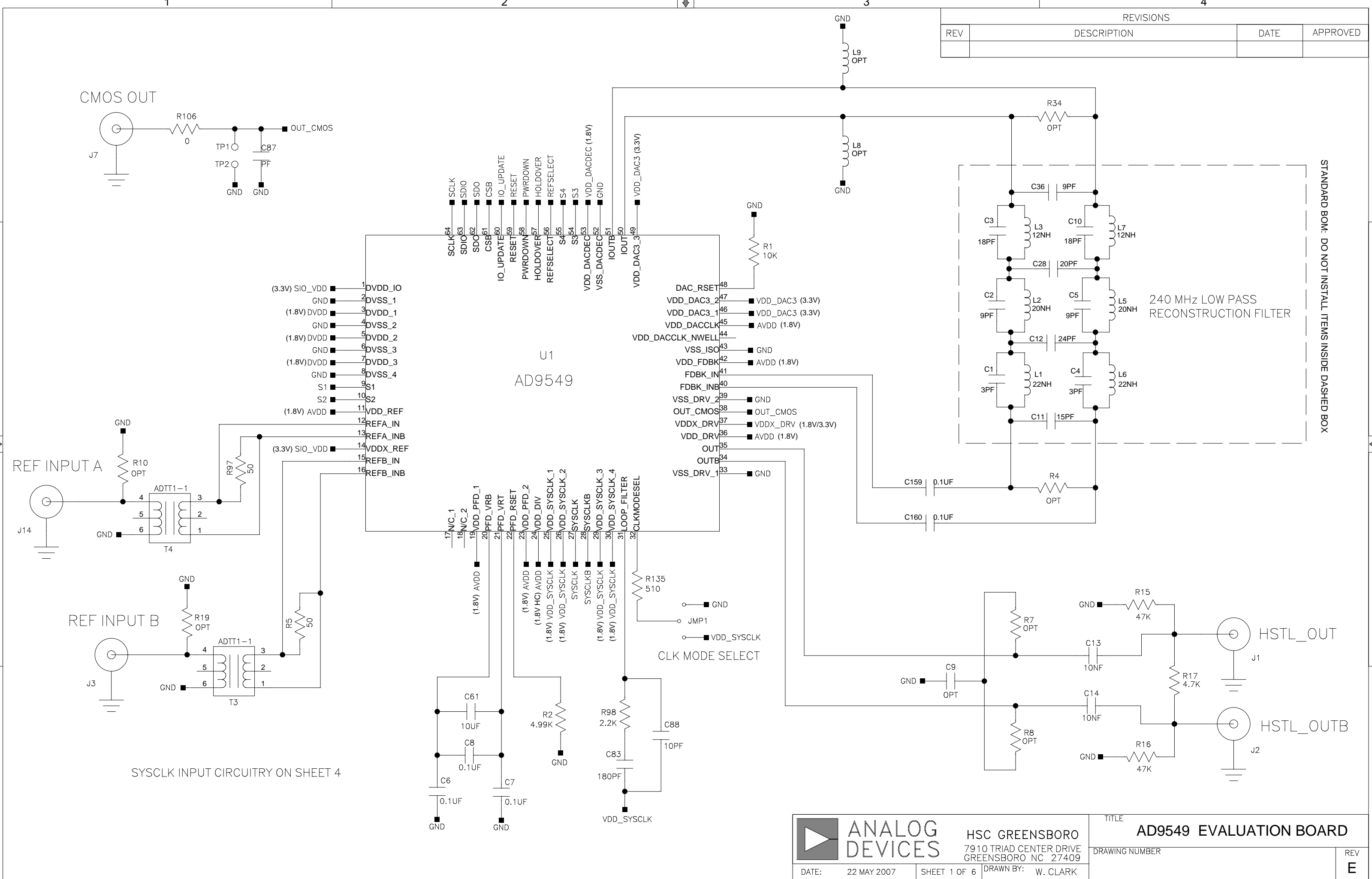


REVISIONS			
REV	DESCRIPTION	DATE	APPROVED

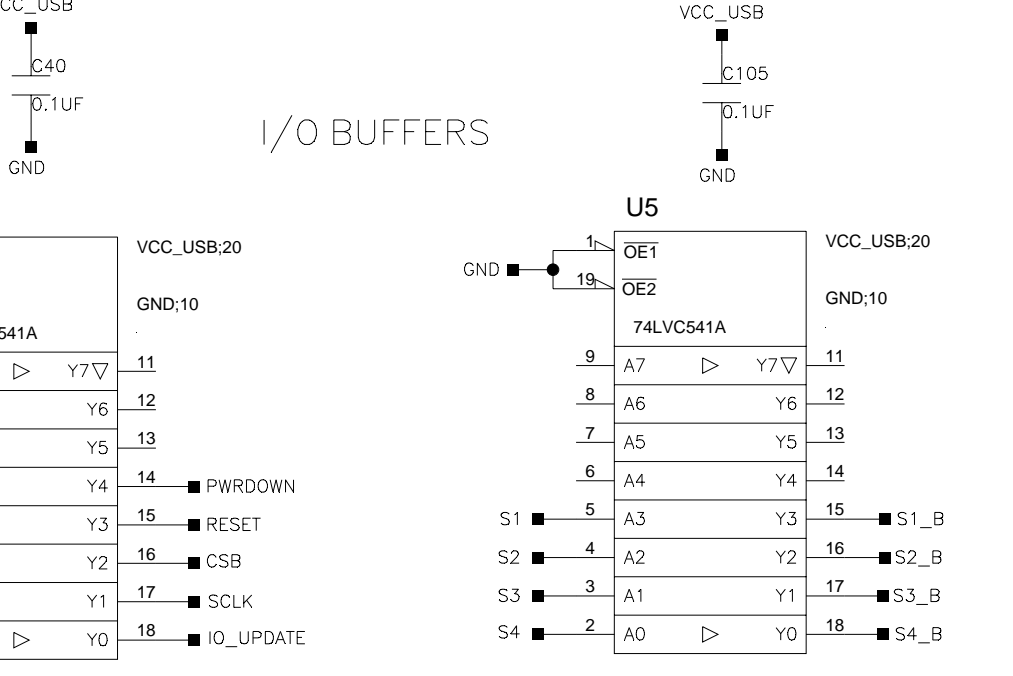
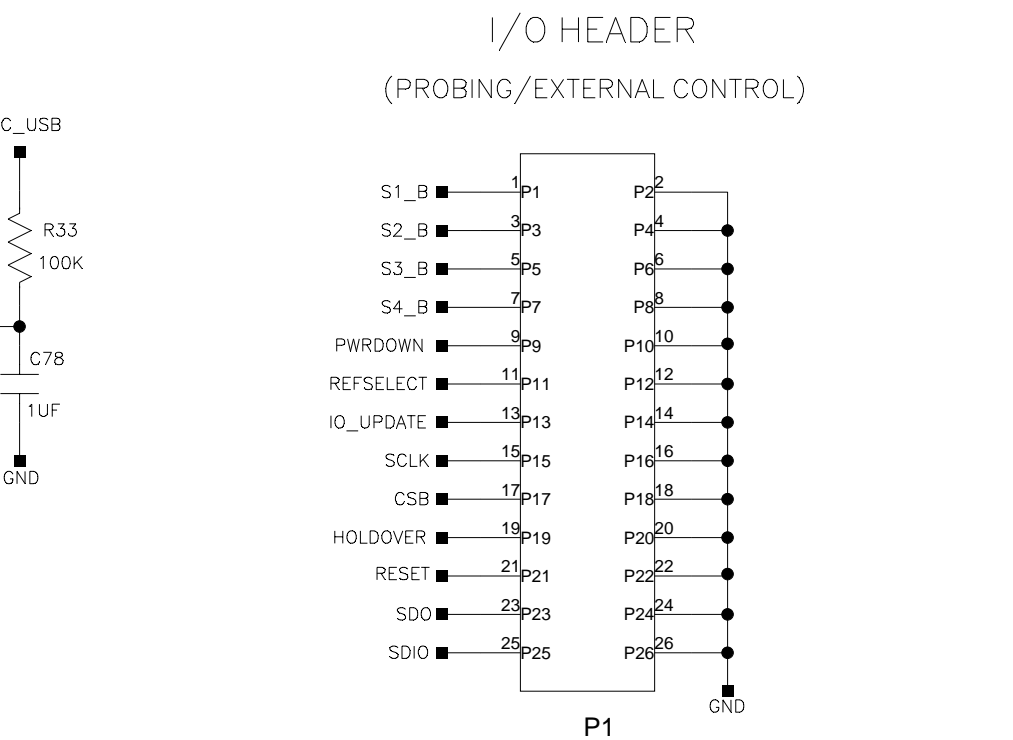
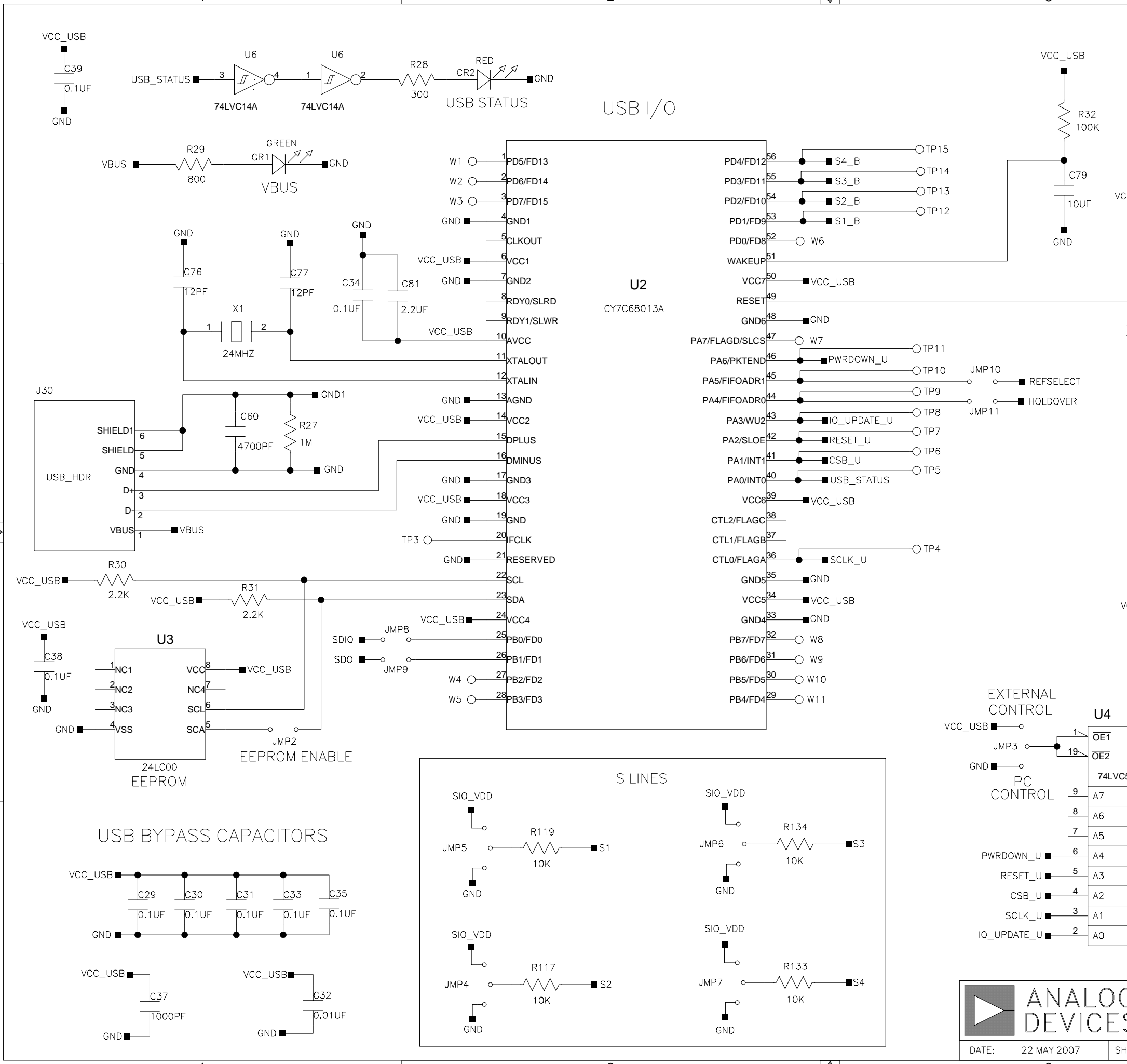


STANDARD BOM: DO NOT INSTALL ITEMS INSIDE DASHED BOX

SYSCLK INPUT CIRCUITRY ON SHEET 4

	HSC GREENSBORO 7910 TRIAD CENTER DRIVE GREENSBORO NC 27409	TITLE AD9549 EVALUATION BOARD	
	DATE: 22 MAY 2007	SHEET 1 OF 6	DRAWN BY: W. CLARK

REVISIONS			
REV	DESCRIPTION	DATE	APPROVED

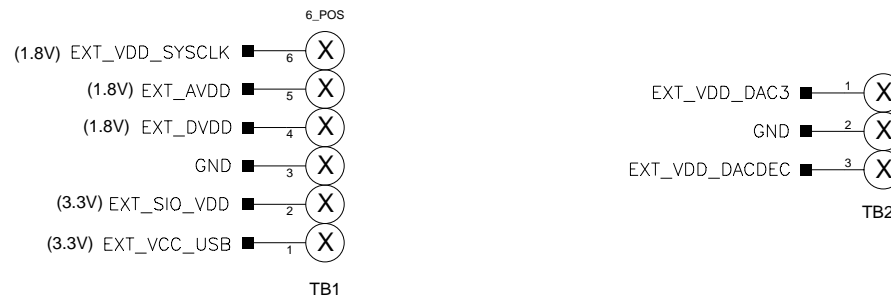
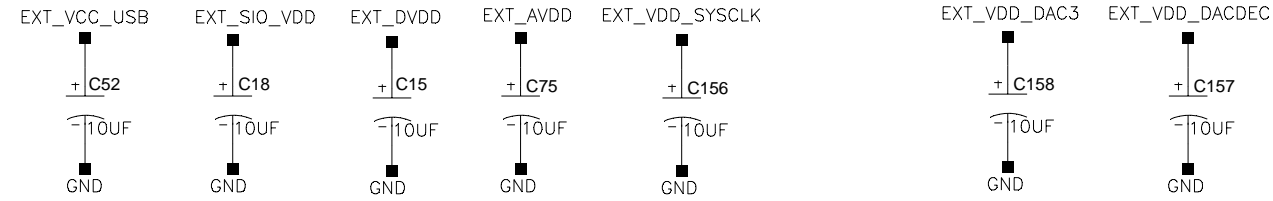
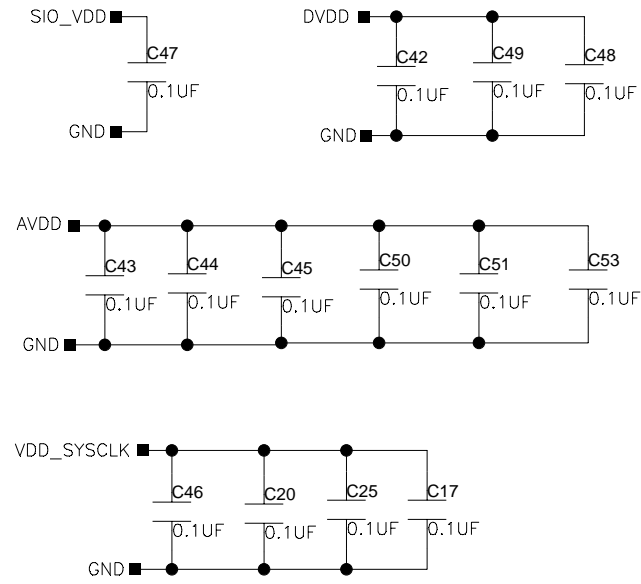


	HSC GREENSBORO 7910 TRIAD CENTER DRIVE GREENSBORO NC 27409	TITLE	
		AD9549 EVALUATION BOARD	
DATE: 22 MAY 2007	SHEET 2 OF 6	DRAWN BY: W. CLARK	REV
			E

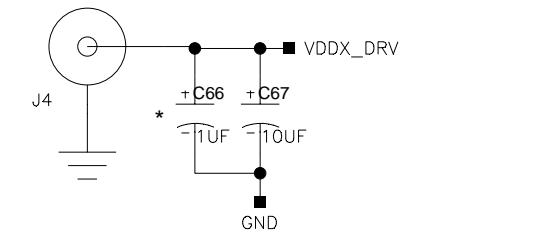
REVISIONS			
REV	DESCRIPTION	DATE	APPROVED

OPTIONAL EXTERNAL POWER SUPPLIES

DUT BYPASS CAPACITORS

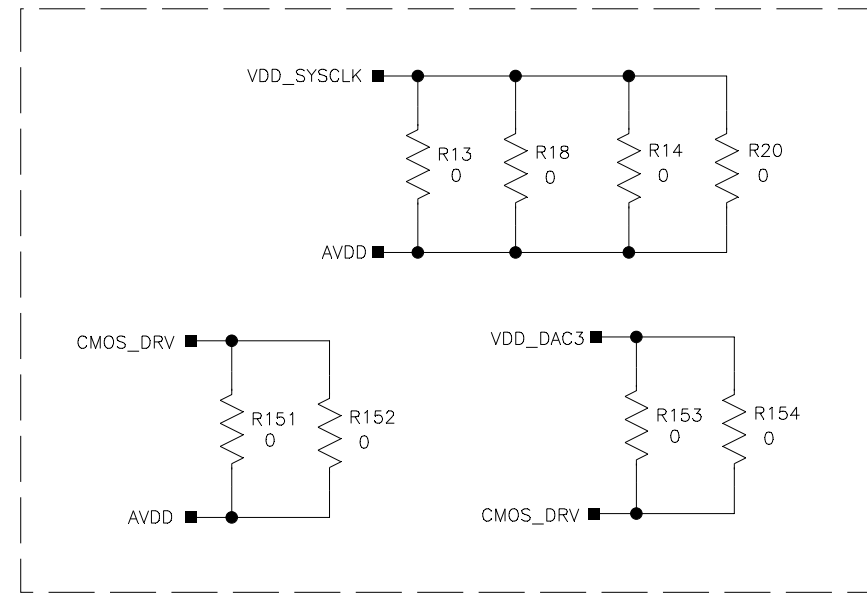
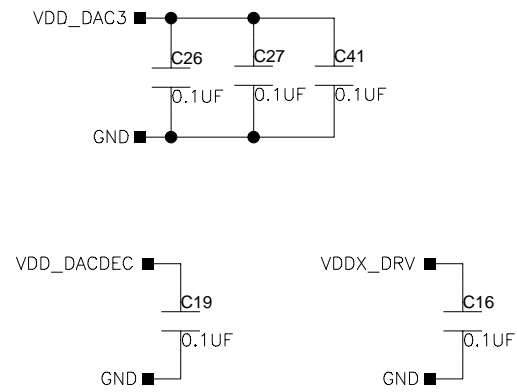


CMOS DRV (1.8V/3.3V)

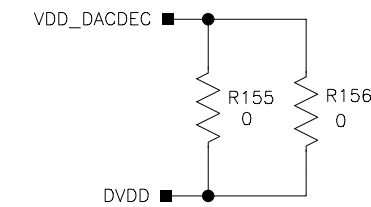


* 1 uF CAP ON BOTTOM SIDE IS OPTIONAL

OPTIONAL POWER PLANE STITCHING



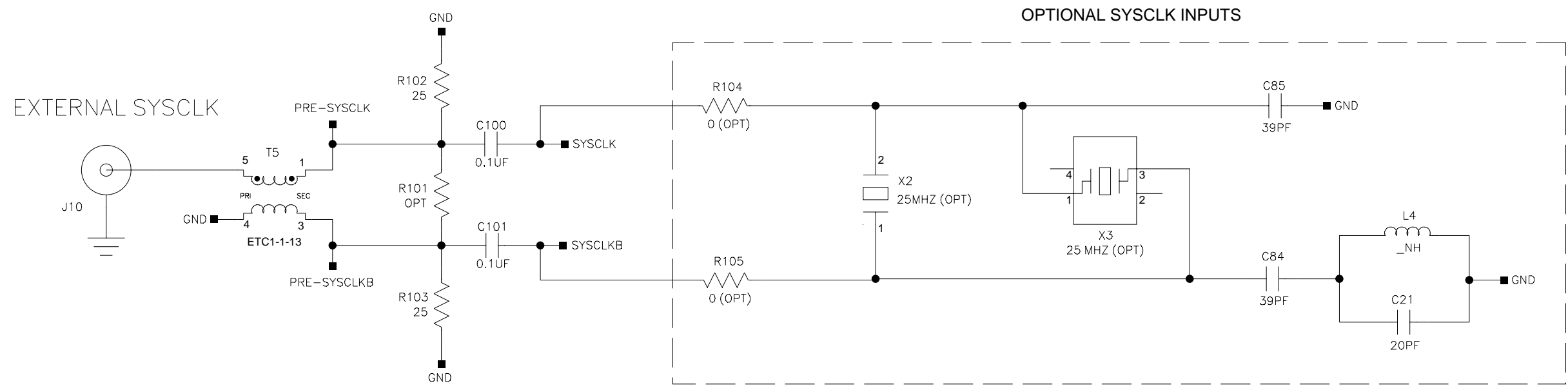
STANDARD BOM: DO NOT INSTALL ITEMS INSIDE DASHED BOX



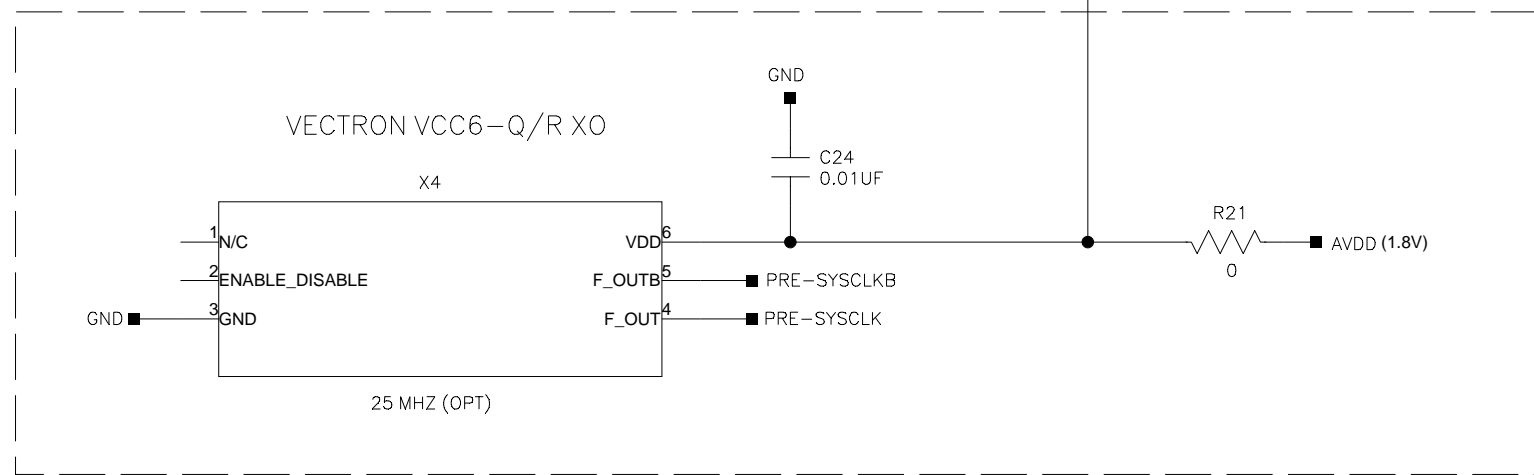
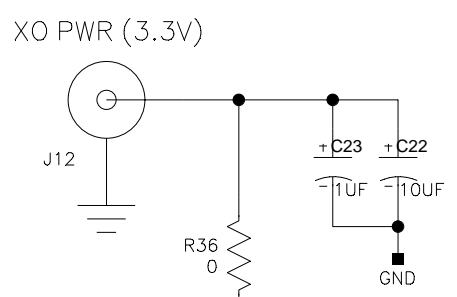
	ANALOG DEVICES HSC GREENSBORO 7910 TRIAD CENTER DRIVE GREENSBORO NC 27409	TITLE AD9549 EVALUATION BOARD	
	DATE: 22 MAY 2007	SHEET 3 OF 6	DRAWN BY: W. CLARK

REVISIONS			
REV	DESCRIPTION	DATE	APPROVED

IF USING ONE OF THE CRYSTALS OR THE XO (INSTEAD OF T5):
REMOVE C100, C101 & INSTALL ASSOCIATED BOXED ITEMS



STANDARD BOM: DO NOT INSTALL ITEMS INSIDE DASHED BOX



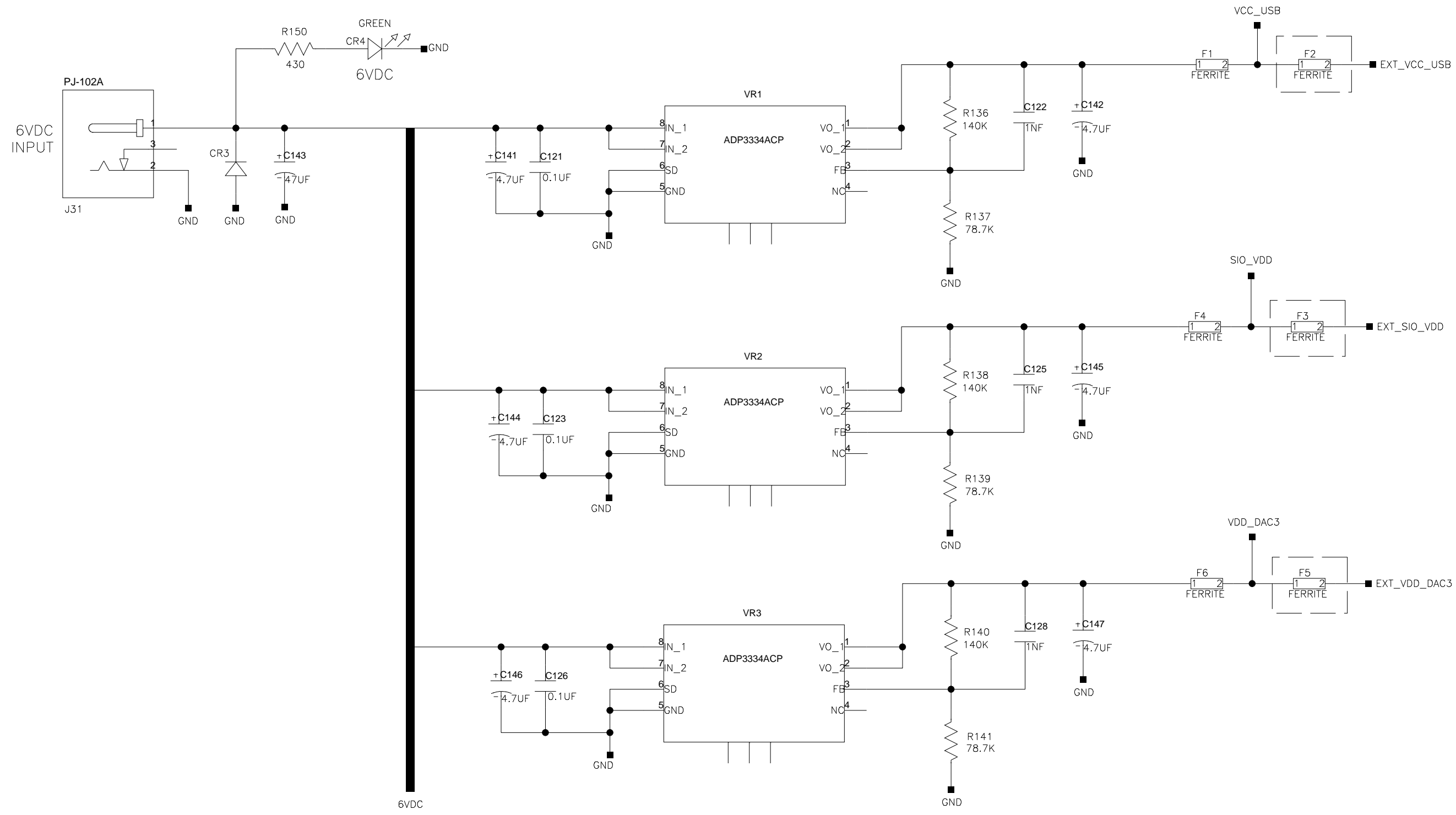
STANDARD BOM: DO NOT INSTALL ITEMS INSIDE DASHED BOX

	HSC GREENSBORO 7910 TRIAD CENTER DRIVE GREENSBORO NC 27409	TITLE AD9549 EVALUATION BOARD	
	DATE: 22 MAY 2007	SHEET 4 OF 6	DRAWN BY: W. CLARK

REVISIONS			
REV	DESCRIPTION	DATE	APPROVED

3.3V LDO REGULATORS

IF USING AN EXTERNAL POWER SUPPLY (INSTEAD OF LDO PER STANDARD BOM):
REMOVE LDO SIDE FERRITE AND INSTALL EXT. SIDE FERRITE



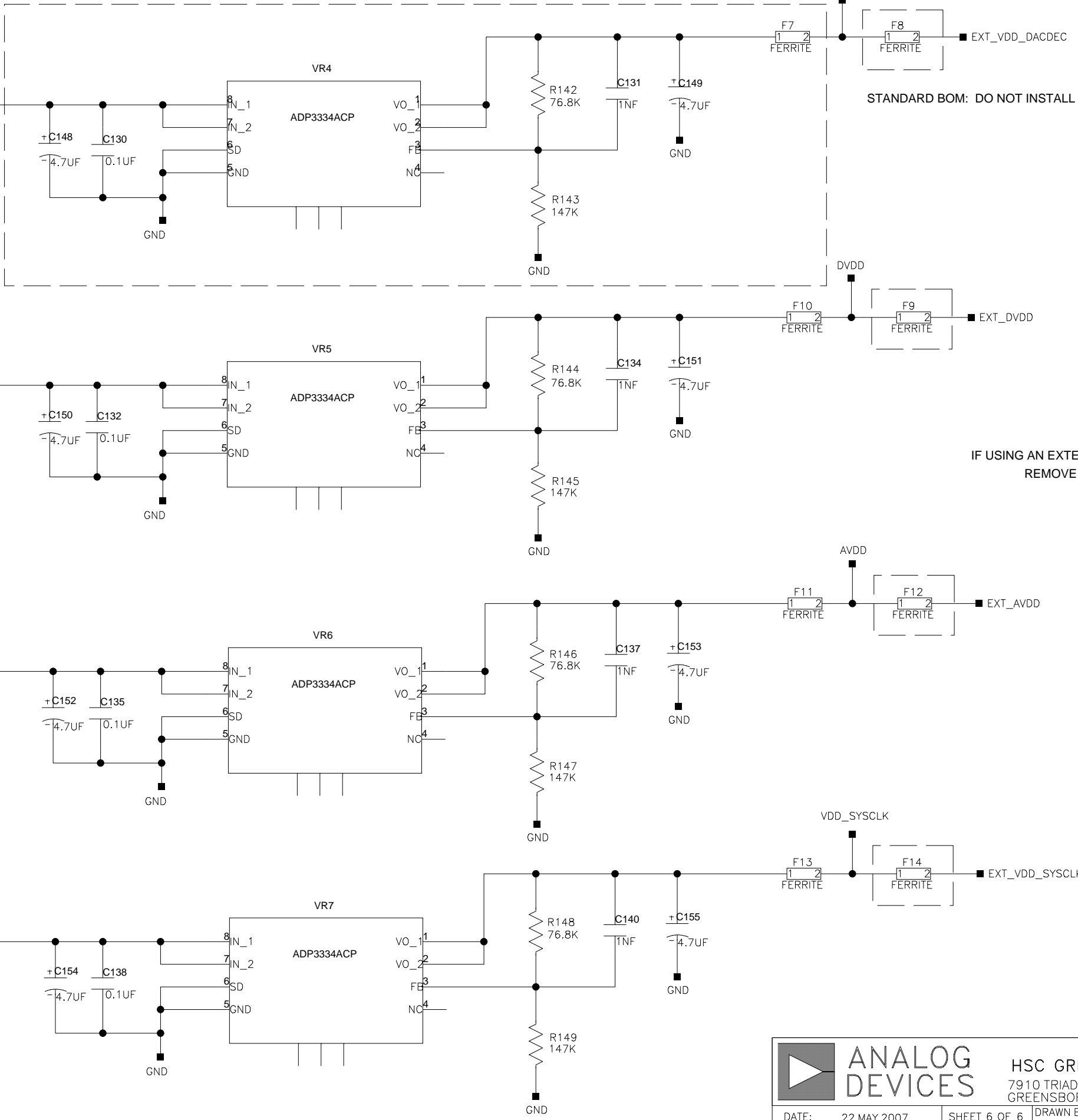
STANDARD BOM: DO NOT INSTALL ITEMS INSIDE DASHED BOX

	ANALOG DEVICES	HSC GREENSBORO 7910 TRIAD CENTER DRIVE GREENSBORO NC 27409	TITLE AD9549 EVALUATION BOARD
	DATE: 22 MAY 2007	SHEET 5 OF 6	DRAWN BY: W. CLARK

REVISIONS			
REV	DESCRIPTION	DATE	APPROVED

1.8V LDO REGULATORS

6VDC



STANDARD BOM: DO NOT INSTALL ITEMS INSIDE DASHED BOX

IF USING AN EXTERNAL POWER SUPPLY (INSTEAD OF LDO PER STANDARD BOM):
REMOVE LDO SIDE FERRITE AND INSTALL EXT. SIDE FERRITE

	ANALOG DEVICES HSC GREENSBORO 7910 TRIAD CENTER DRIVE GREENSBORO NC 27409	TITLE AD9549 EVALUATION BOARD	
	DATE: 22 MAY 2007	SHEET 6 OF 6	DRAWN BY: W. CLARK