


A

B

C

D

ADSP-BF706 EZ-KIT-MINI Schematic

		2 Elizabeth Drive Chelmsford, MA 01824 PH: 1-800-ANALOGD	
Title		ADSP-BF706 EZ-KIT-MINI Title	
Size C	Board No.	A0586-2014	Rev 1.1A
Date	10/17/2014	Sheet 1	of 11

A

B

C

D

1

1

2

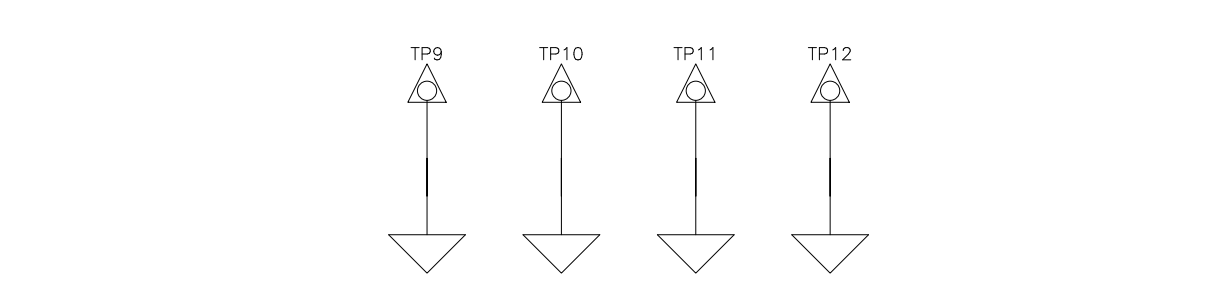
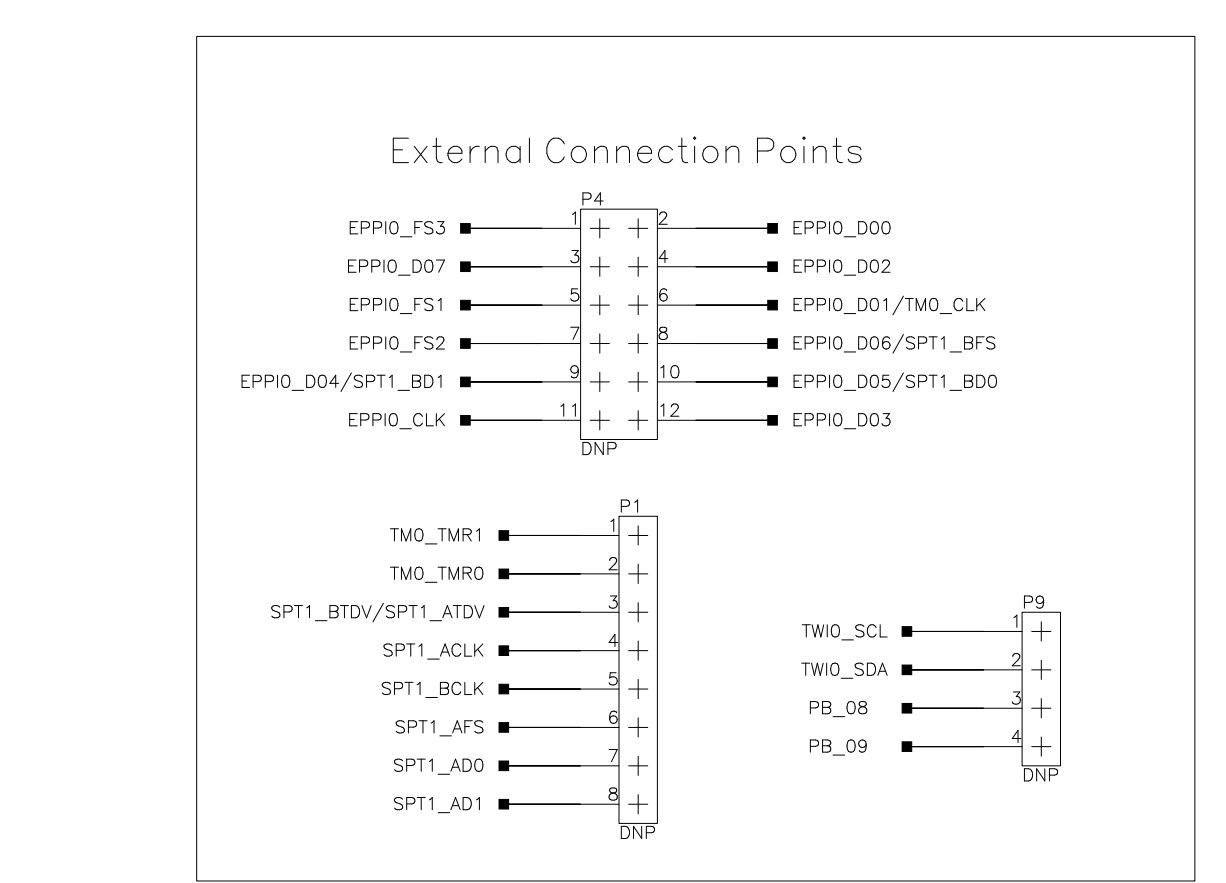
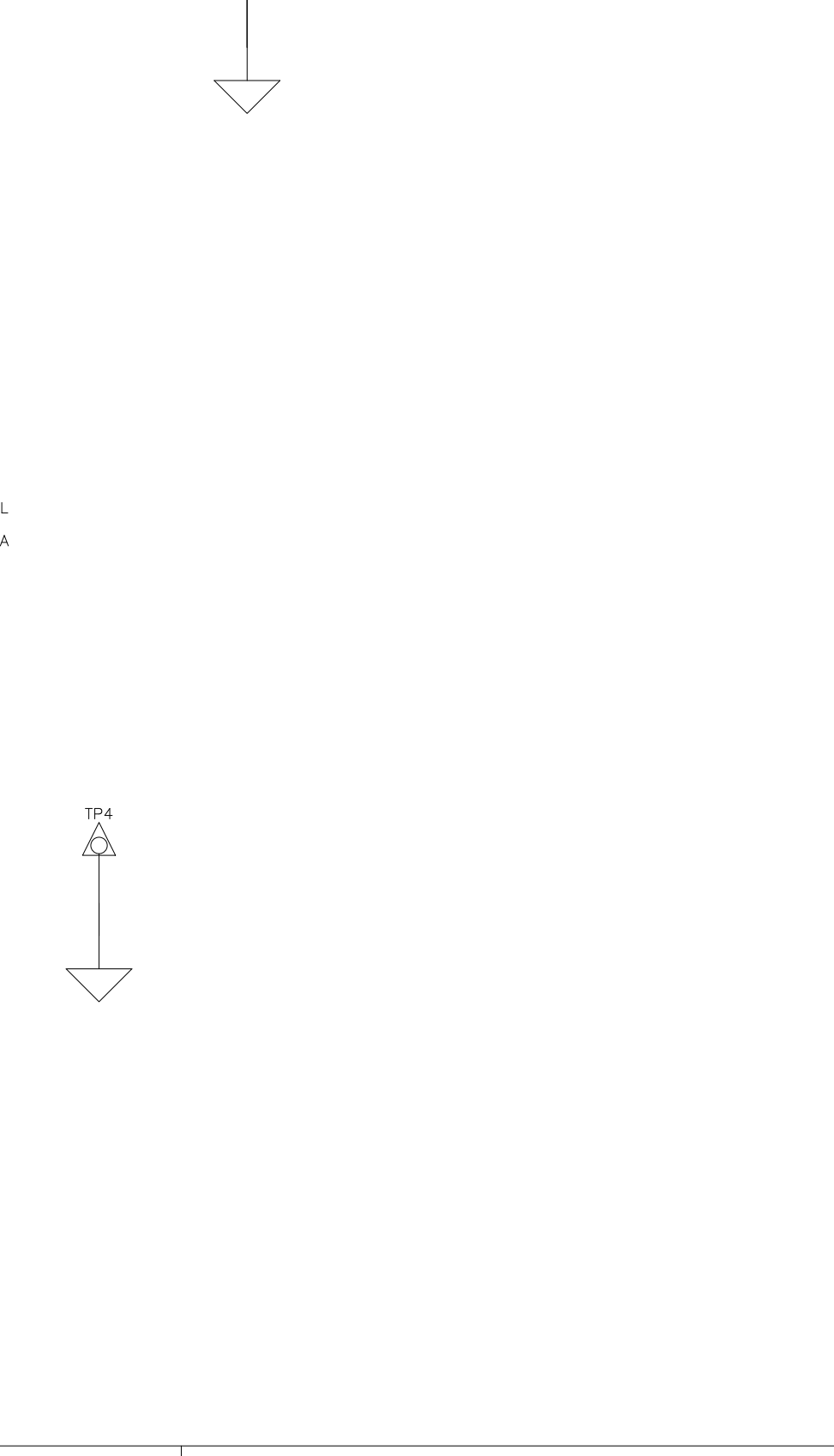
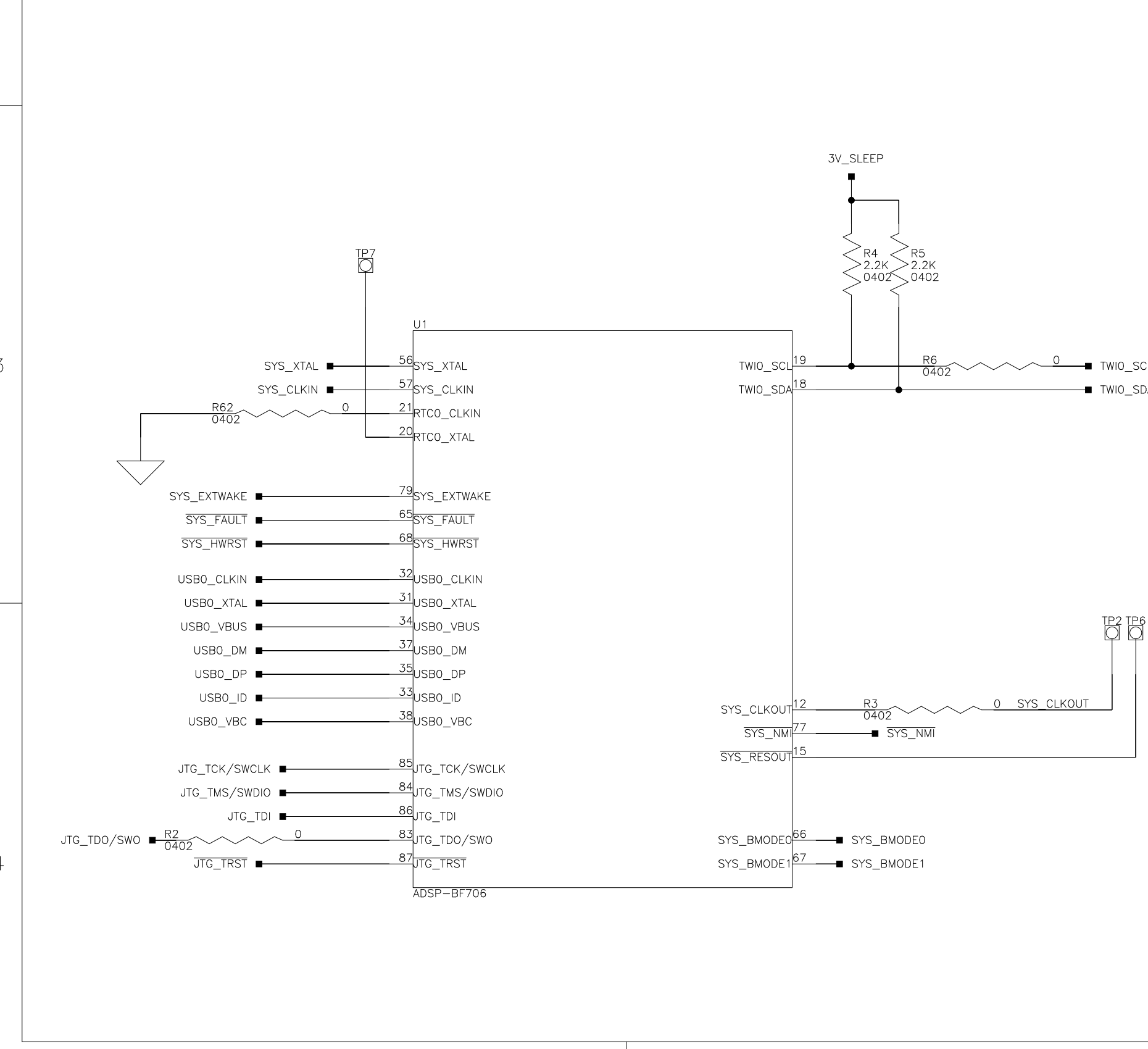
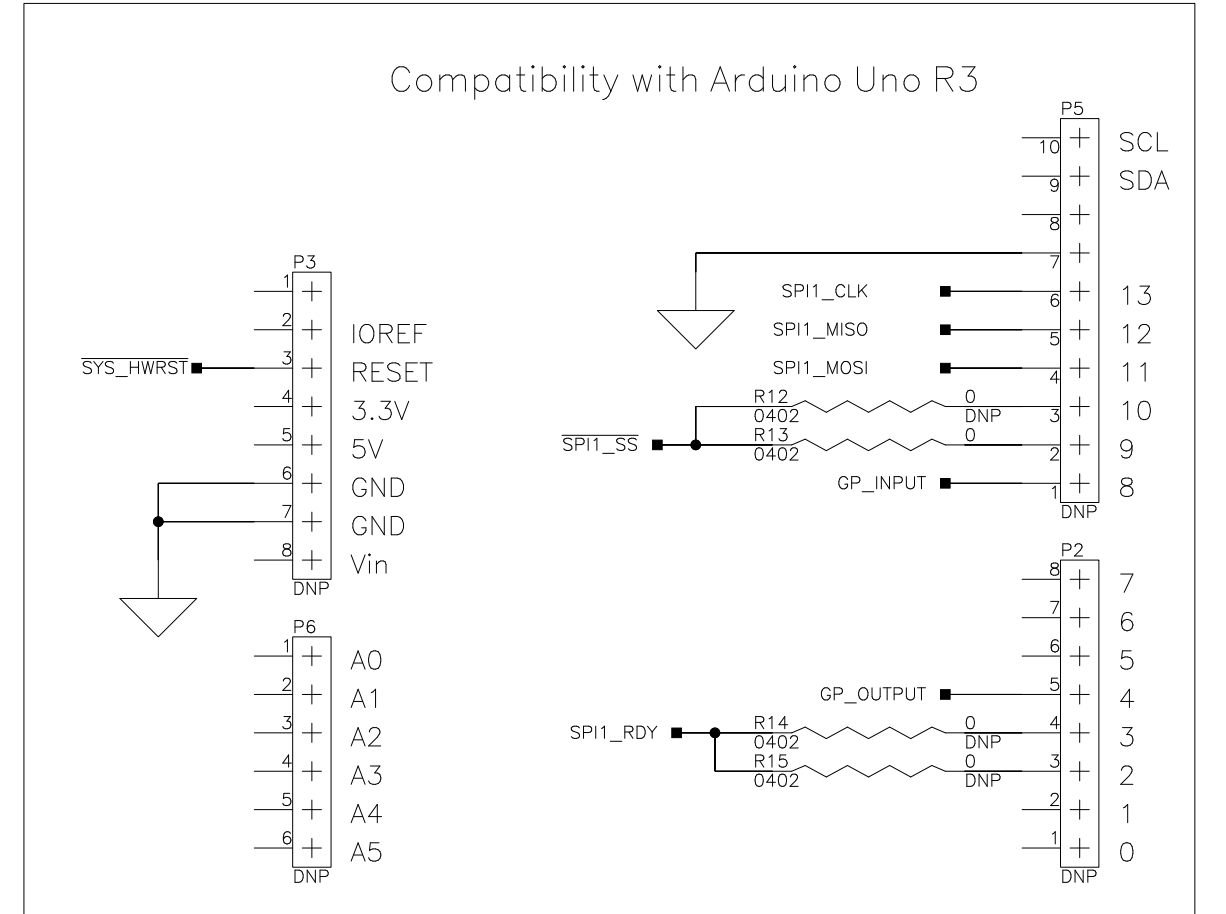
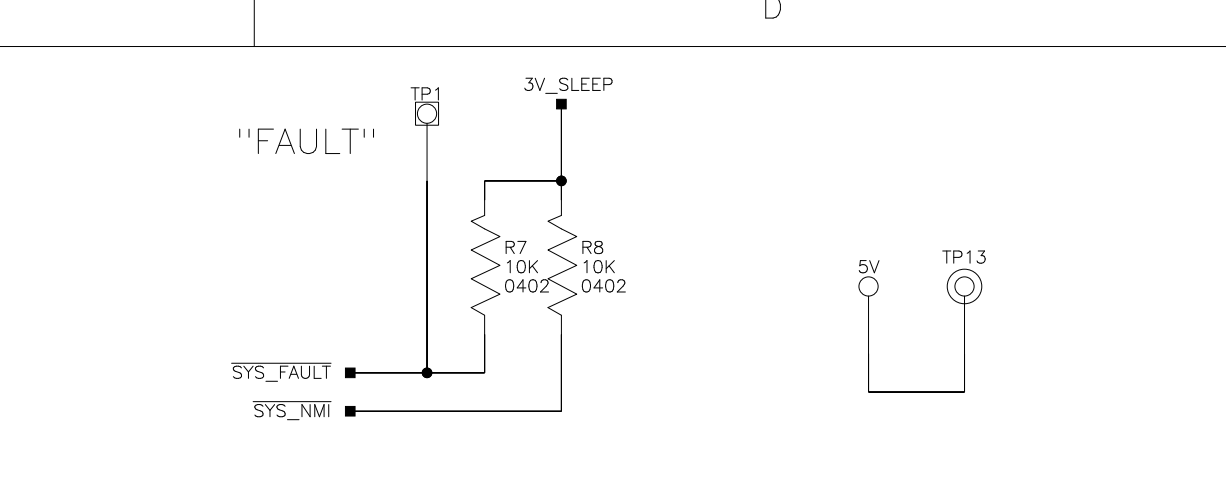
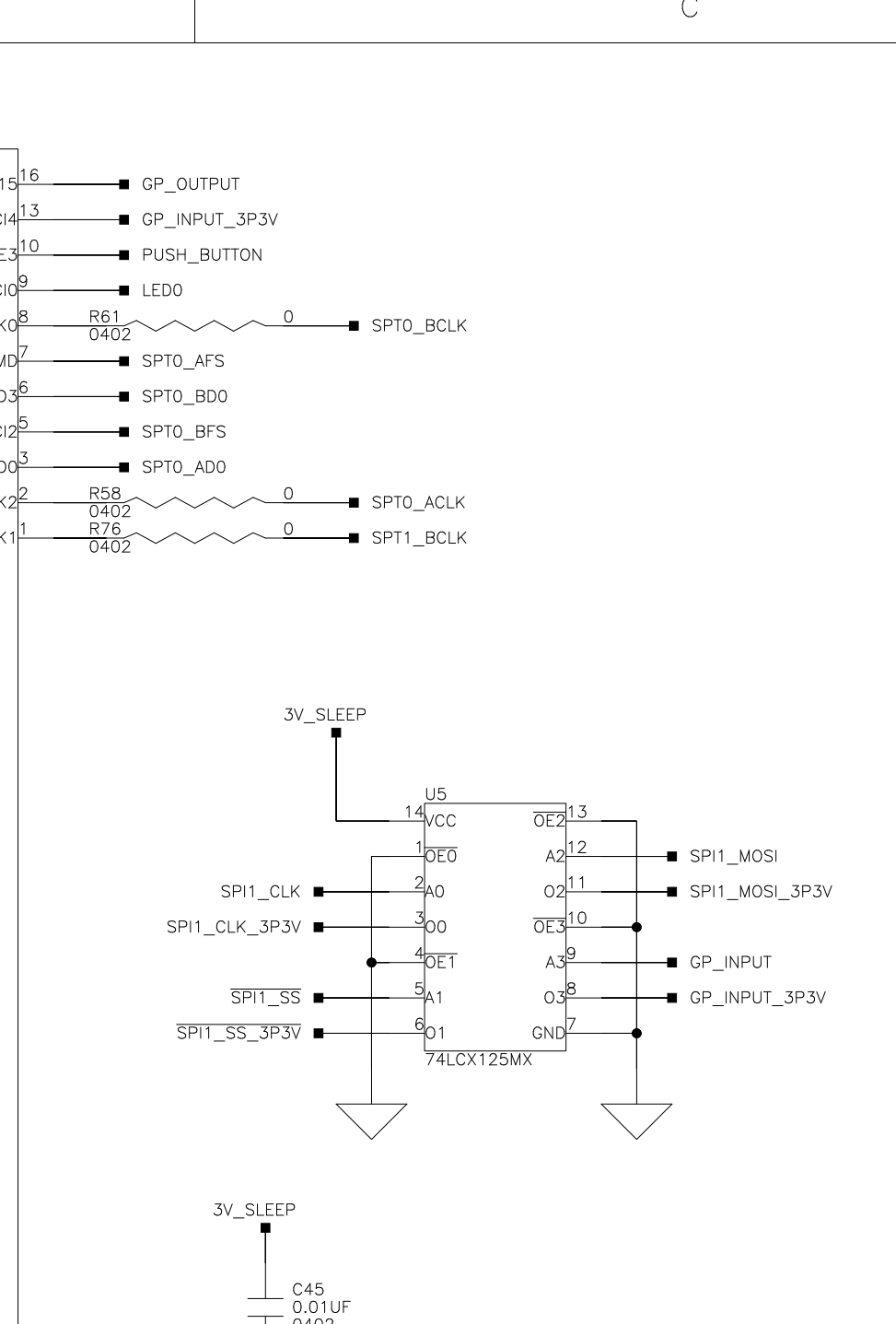
2

3

3

4

4



ANALOG DEVICES 2 Elizabeth Drive
Chelmsford, MA 01824
PH: 1-800-ANALOGD

Title: ADSP-BF706 EZ-KIT-MINI Processor

Size C Board No. A0586-2014 Rev 1.1A

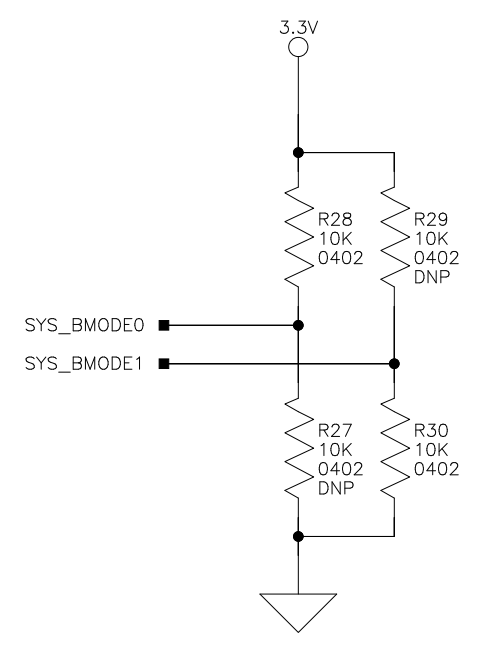
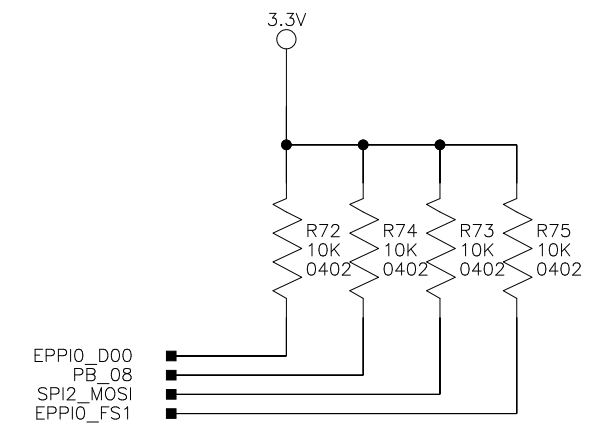
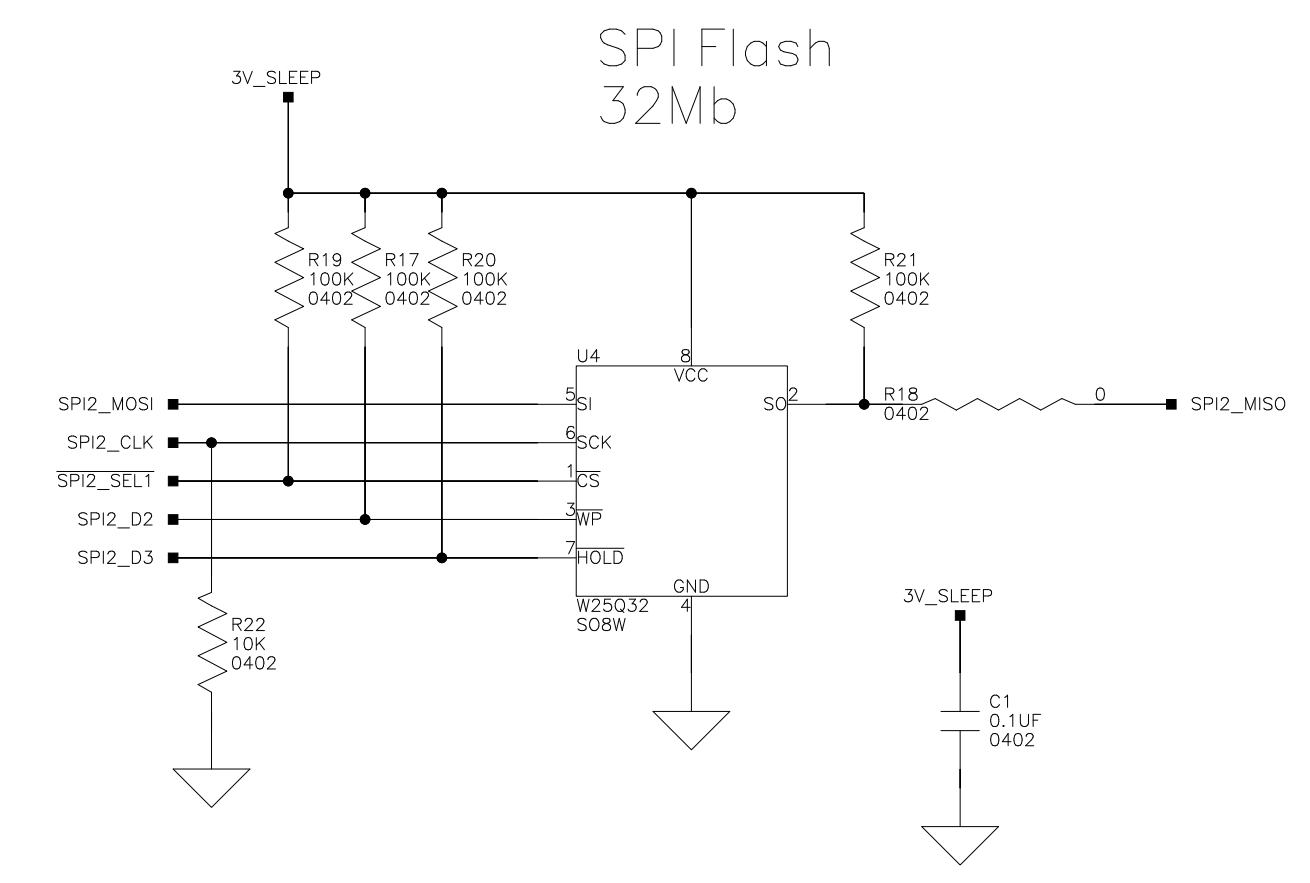
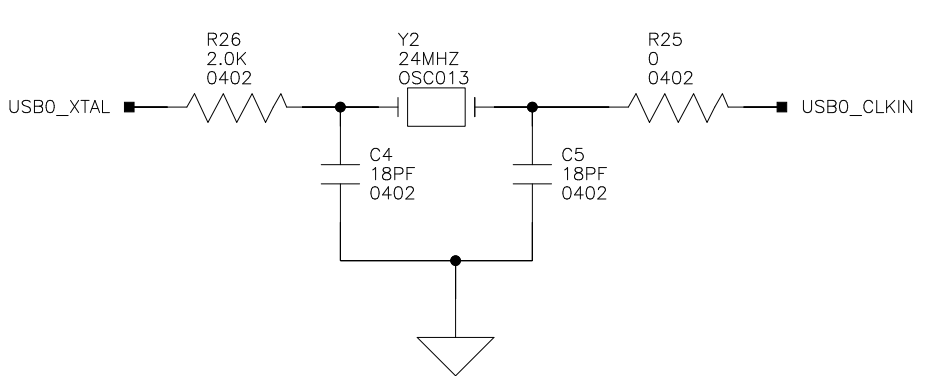
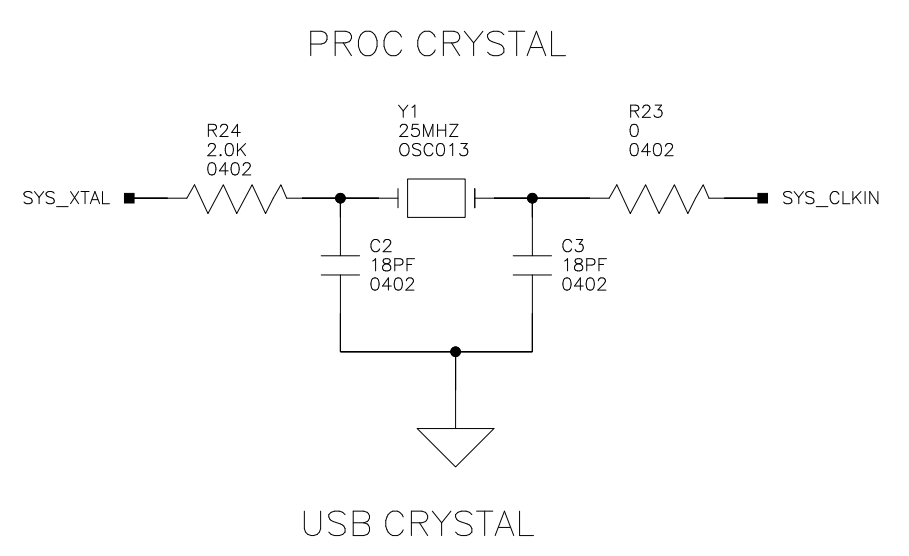
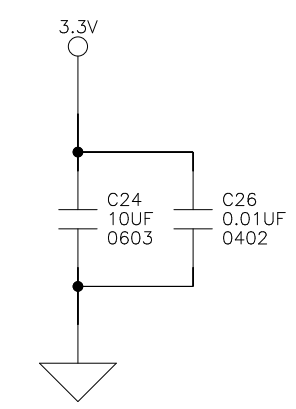
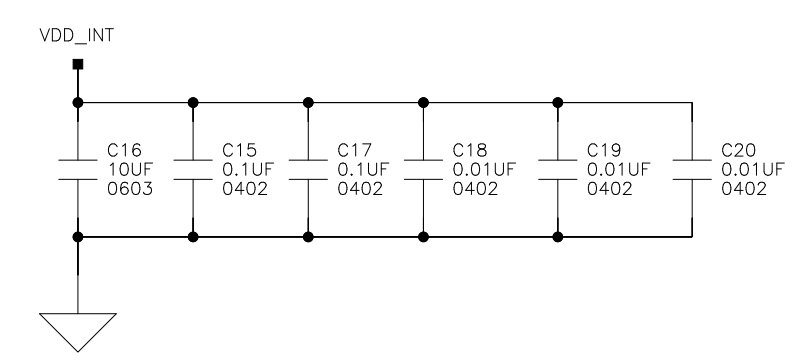
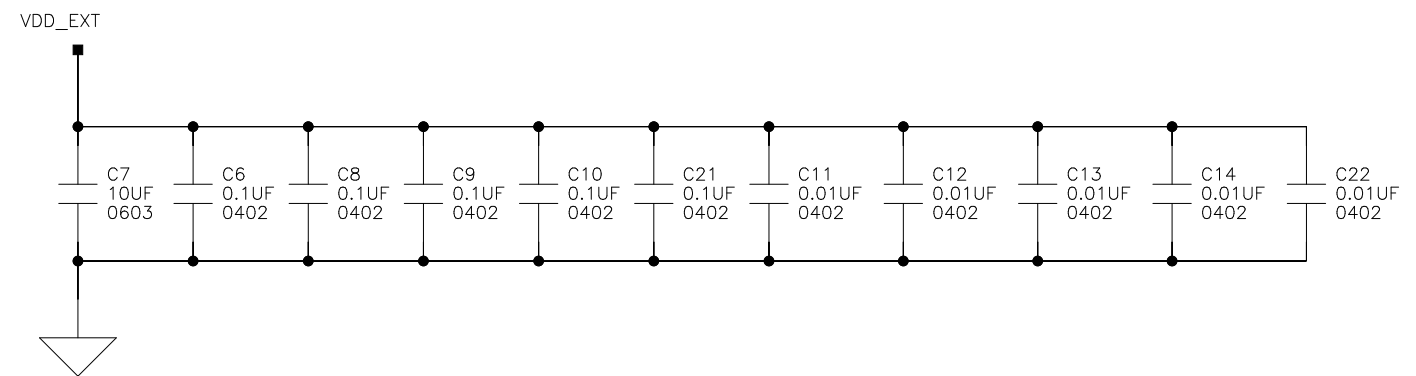
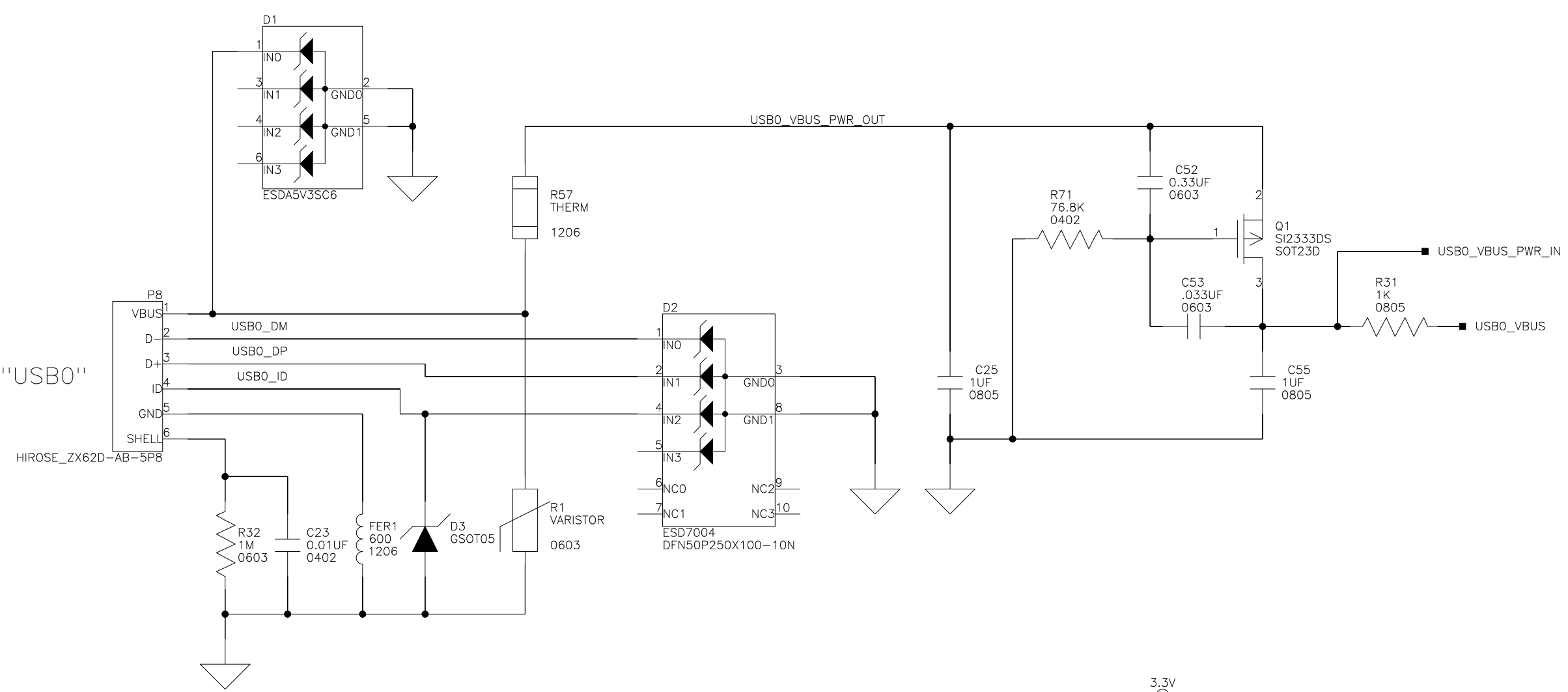
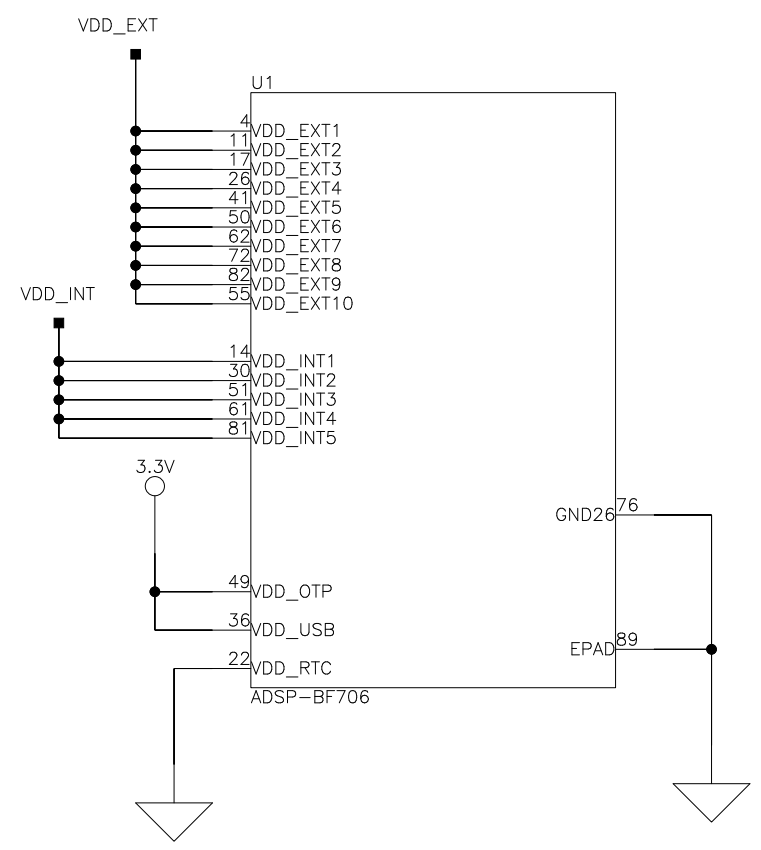
Date 10/17/2014 Sheet 2 of 11

A

B

C

D



		2 Elizabeth Drive Chelmsford, MA 01824 PH: 1-800-ANALOGD	
Title ADSP-BF706 EZ-KIT-MINI USB clk flash			
Size C	Board No. A0586-2014	Rev 1.1A	
Date 10/17/2014	Sheet 3		of 11

A

B

C

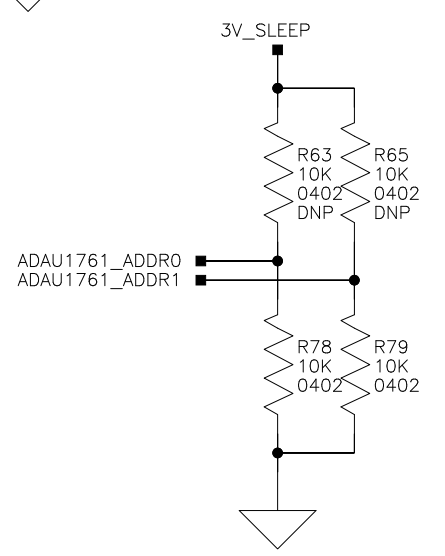
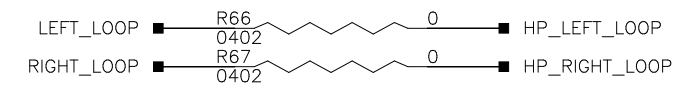
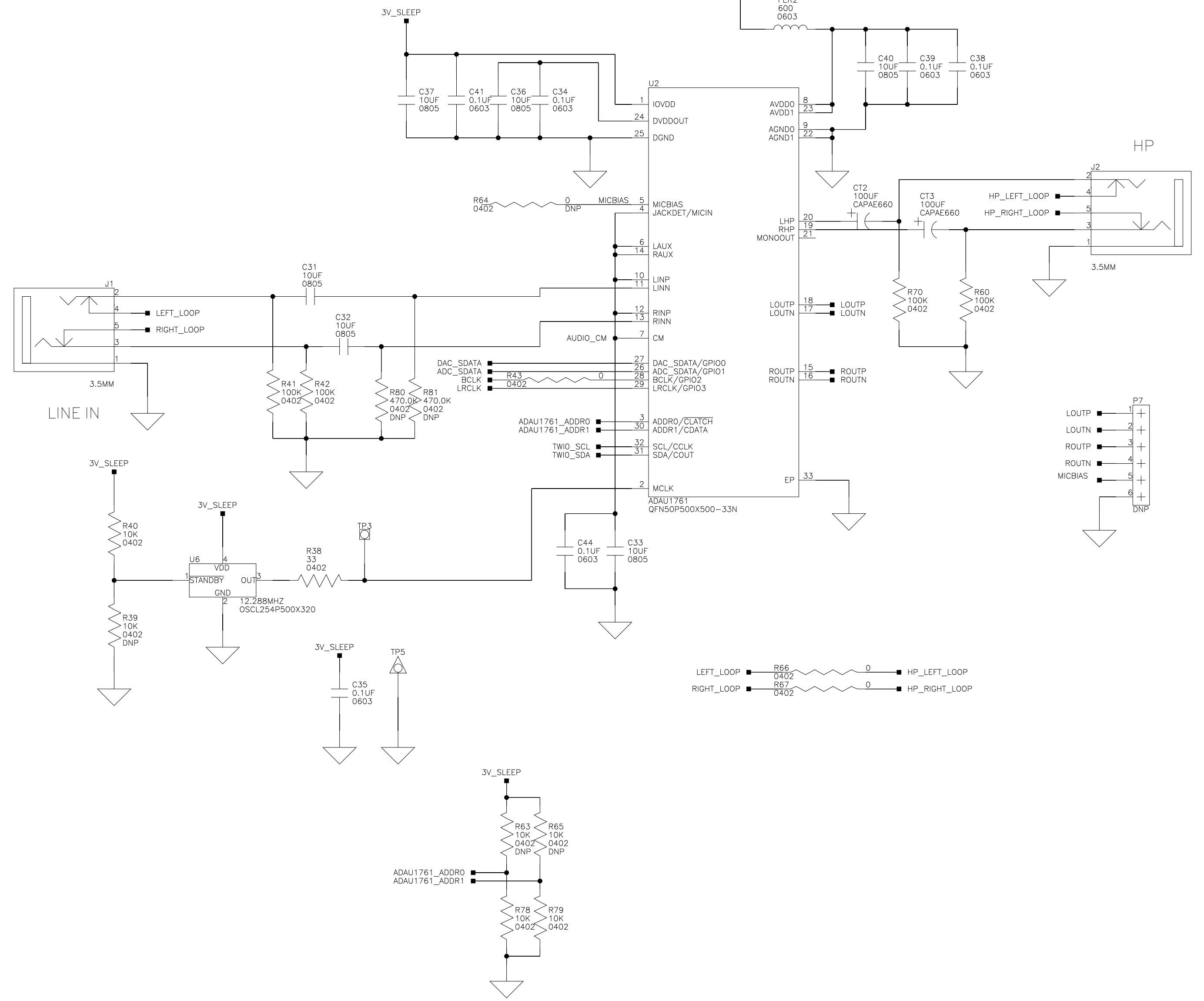
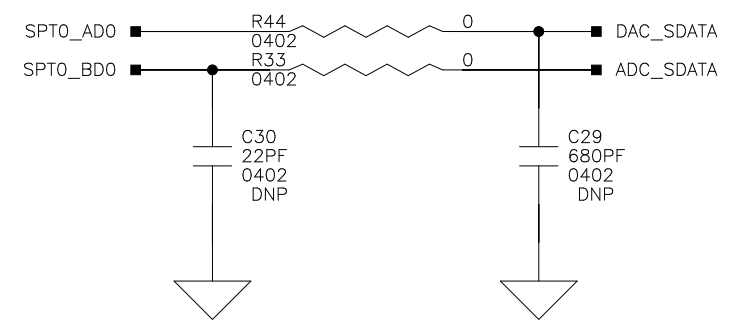
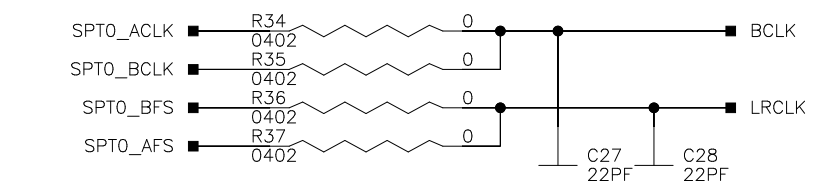
D

A

B

C

D



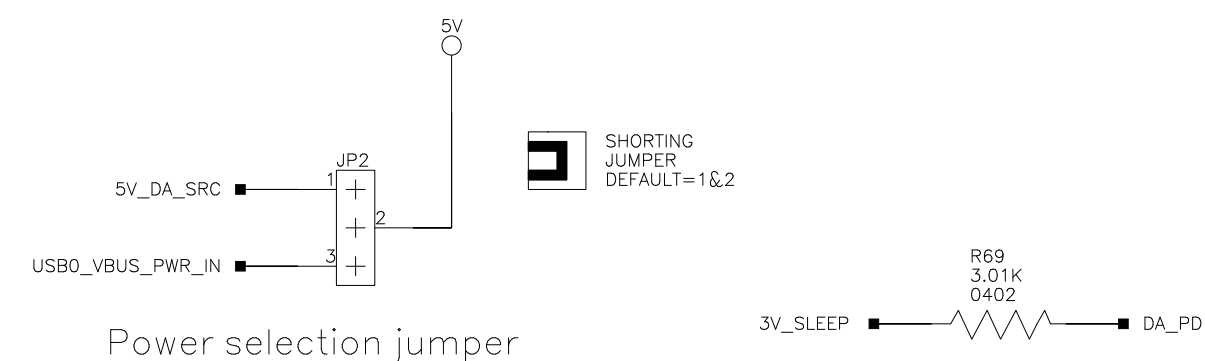
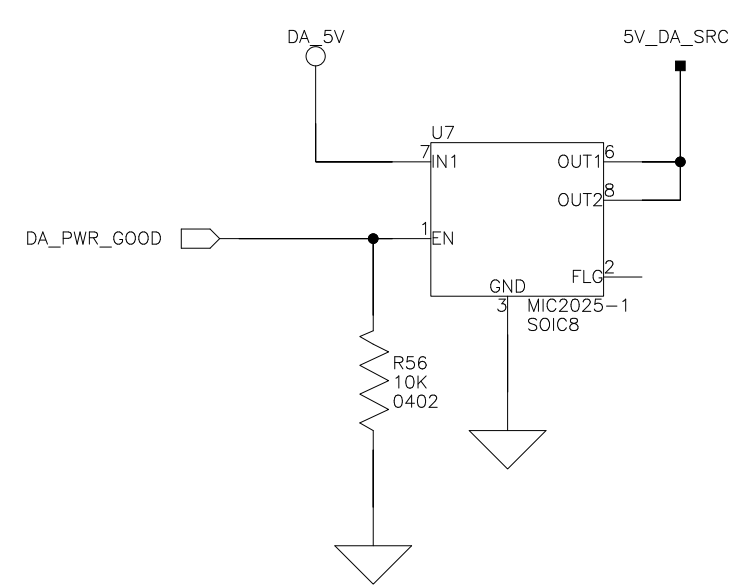
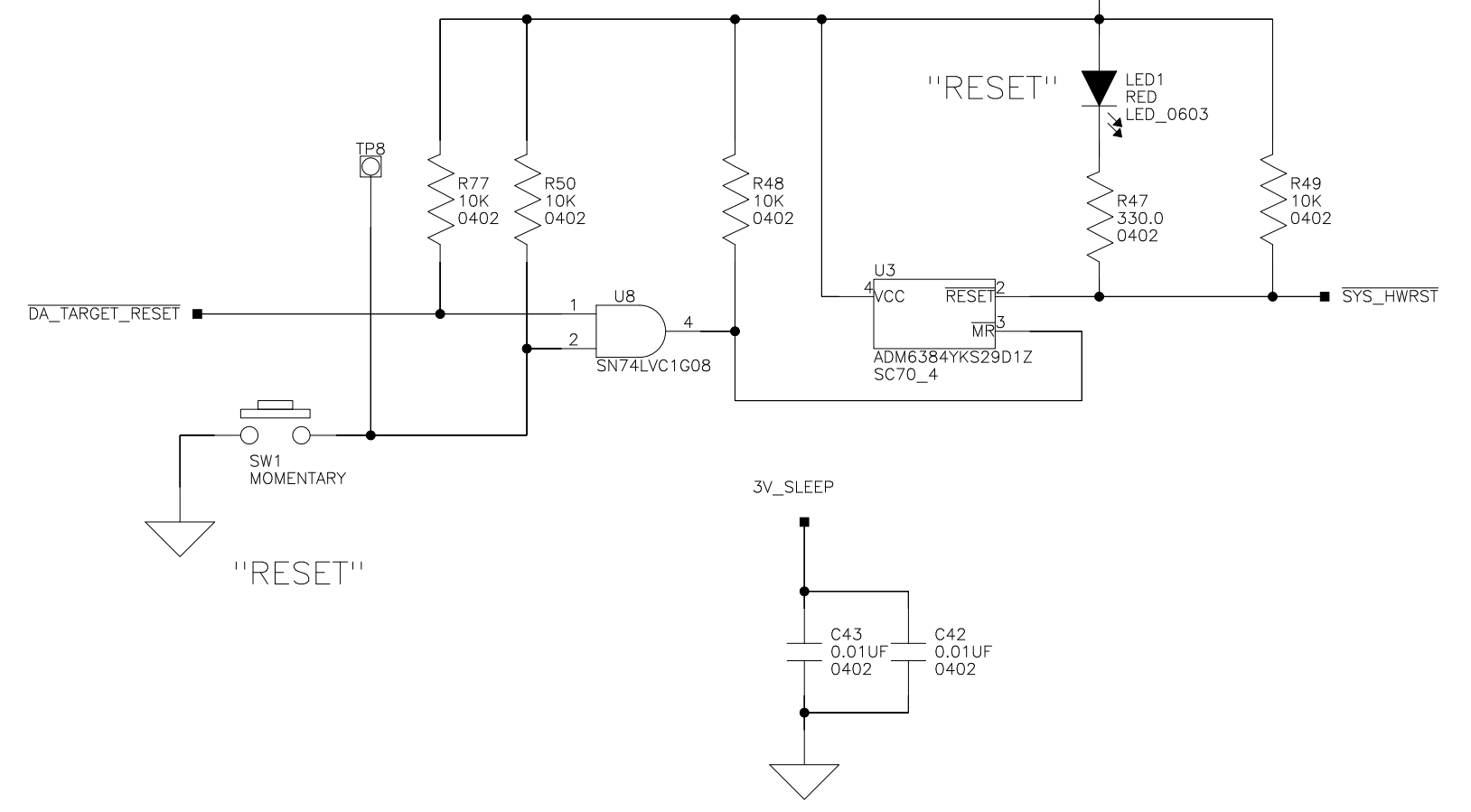
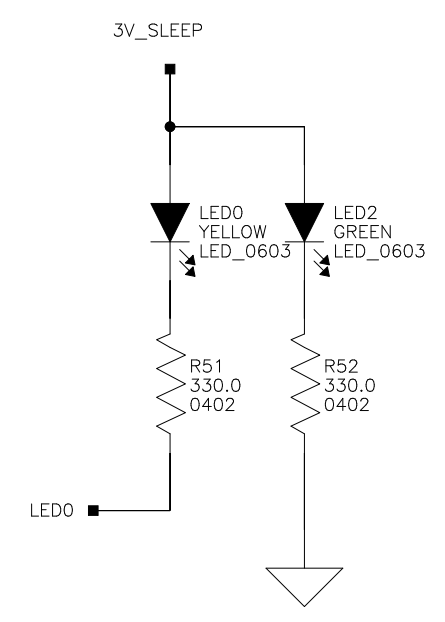
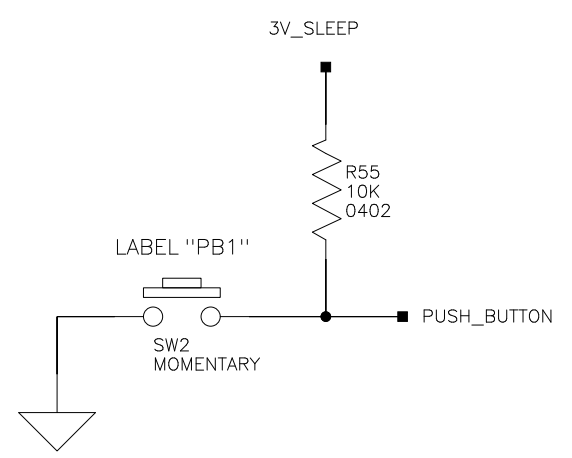
		2 Elizabeth Drive Chelmsford, MA 01824 PH: 1-800-ANALOGD	
		Title ADSP-BF706 EZ-KIT-MINI Audio	
Size C	Board No. A0586-2014	Rev 1.1A	
Date 10/17/2014	Sheet 4		of 11

A

B

C

D



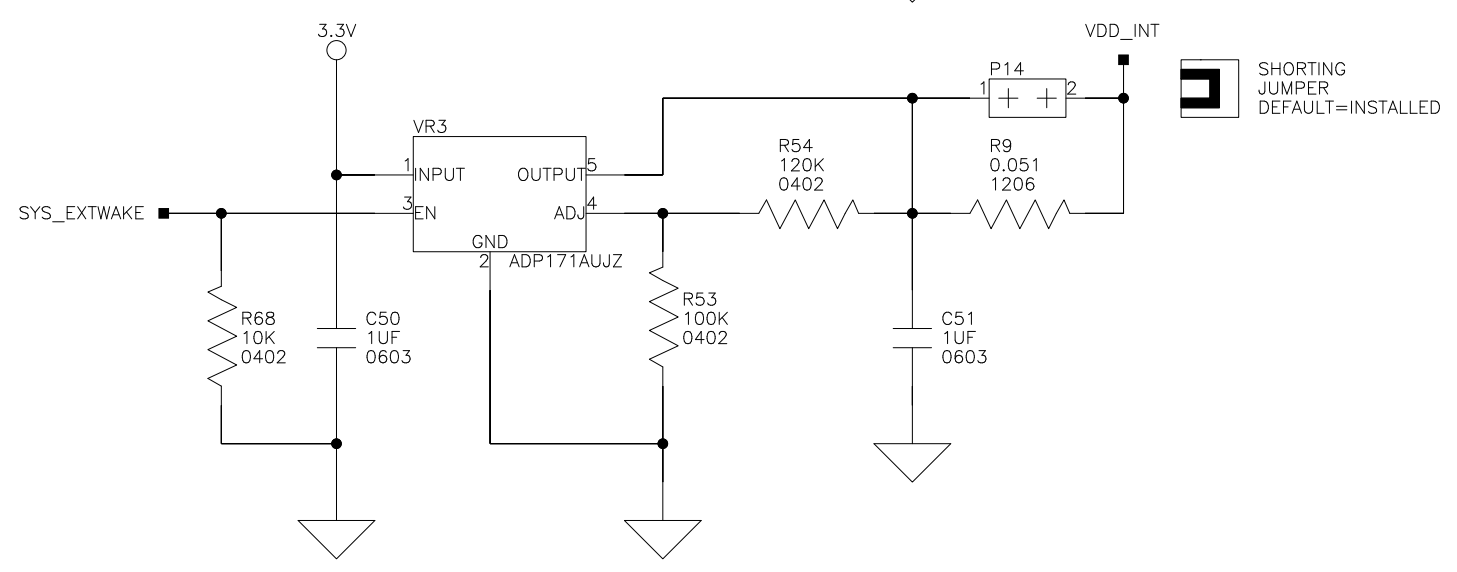
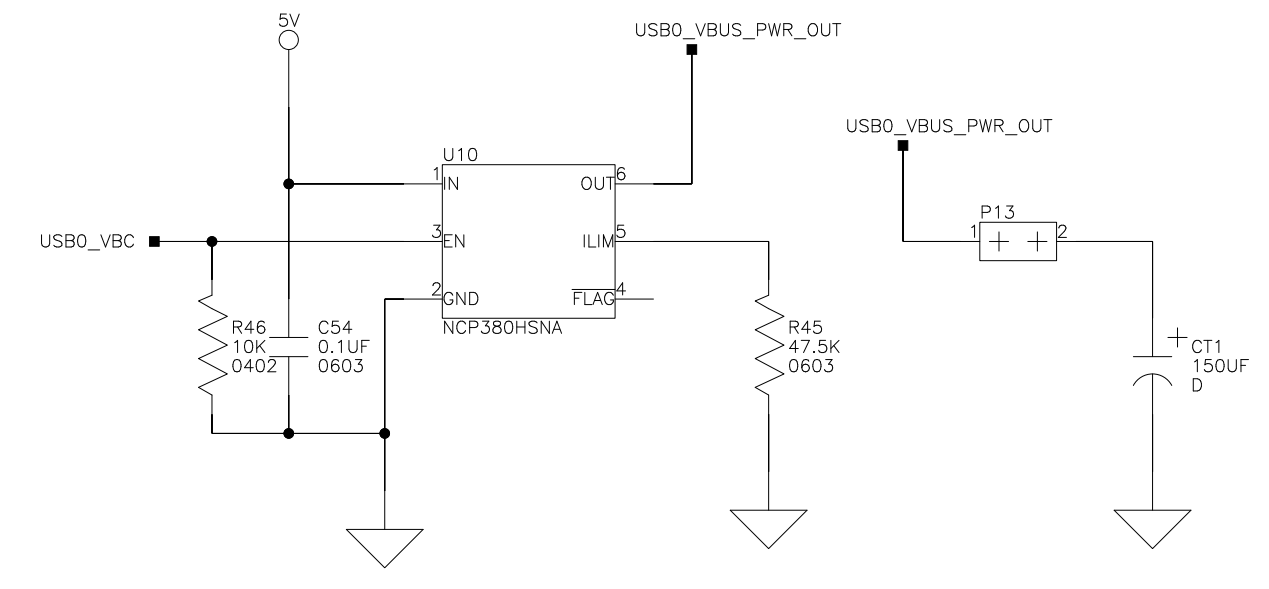
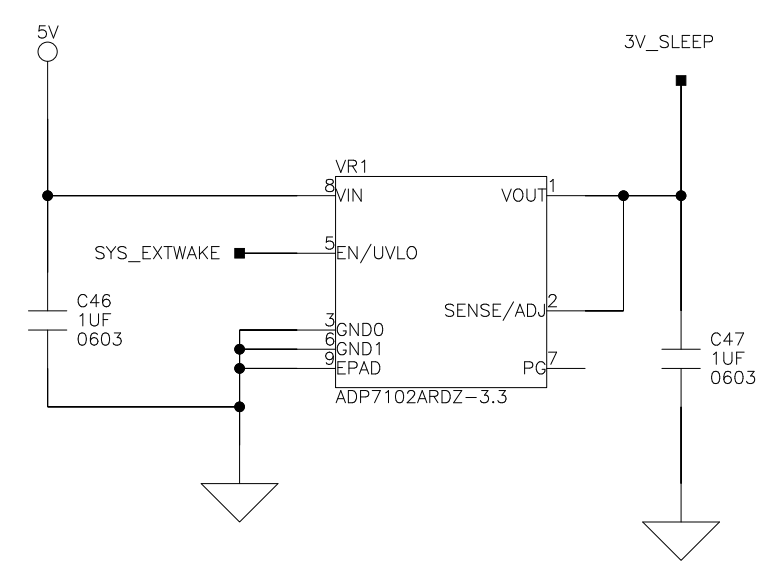
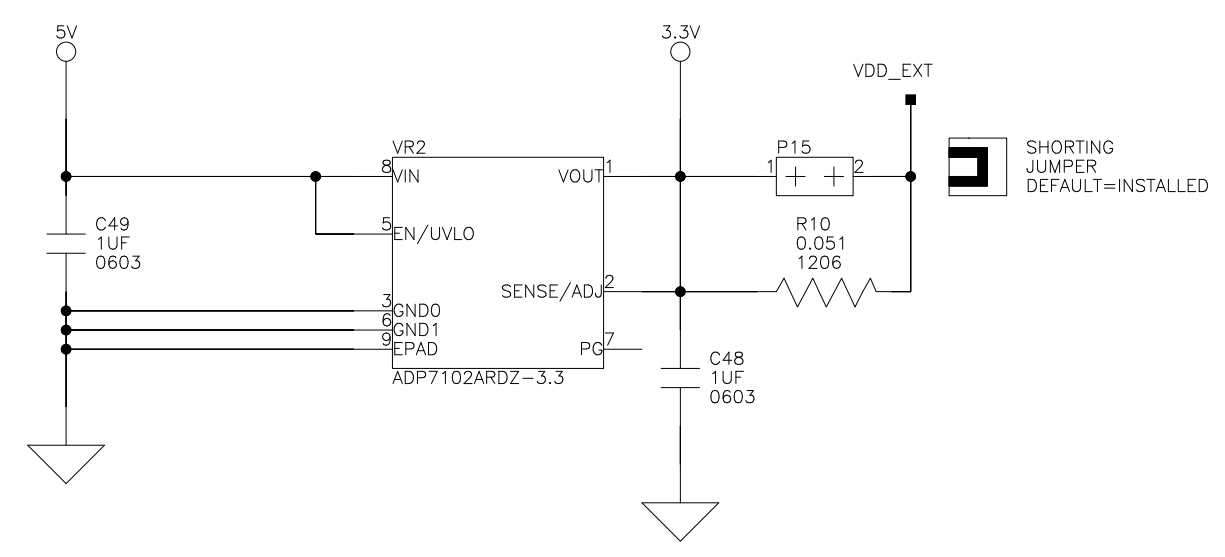
Power selection jumper

1&2: Debug agent connector (ZP1) source of power

2&3:BF706 USB connector (P8) source of power

2&3:Separate power sources, BF706 power from P8, and debug agent from ZP1 (requires 2 USB cables)

Add jumper to P13 when bus-powered device connected to P8.



		2 Elizabeth Drive Chelmsford, MA 01824 PH: 1-800-ANALOGD	
		Title ADSP-BF706 EZ-KIT-MINI Power	
Size C	Board No.	A0586-2014	Rev 1.1A
Date	10/17/2014	Sheet 5	of 11