

8

7

6

5

4

3

2

1

THIS DRAWING IS THE PROPERTY OF ANALOG DEVICES INC. IT IS NOT TO BE REPRODUCED OR COPIED, IN WHOLE OR IN PART, OR USED IN FURNISHING INFORMATION TO OTHERS, OR FOR ANY OTHER PURPOSE DETRIMENTAL TO THE INTERESTS OF ANALOG DEVICES. THE EQUIPMENT SHOWN HEREON MAY BE PROTECTED BY PATENTS OWNED OR CONTROLLED BY ANALOG DEVICES.

RELAY CONTROL CHART

| CONTROL | CODE | DEVICE | FUNCTION | CONNECTOR |
|---------|------|--------|----------|-----------|
| | | | | |
| | | | | |
| | | | | |
| | | | | |
| | | | | |
| | | | | |
| | | | | |
| | | | | |
| | | | | |
| | | | | |
| | | | | |
| | | | | |

| JUMPER TABLE | | |
|--------------|----|-----|
| JP# | ON | OFF |
| 1 | | |
| 2 | | |
| 3 | | |
| 4 | | |
| 5 | | |

* SEE ASSEMBLY INSTRUCTIONS

REVISIONS

| REV | DESCRIPTION | DATE | APPROVED |
|-----|-------------|------|----------|
| | | | |

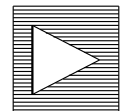
D

C

B

A

EV-ADF41513SD3Z

| TEMPLATE ENGINEER | DATE | SCHEMATIC | |  ANALOG DEVICES | | | | | |
|--------------------------------|------|--|--------------------------------|--|-----------|--------------|-----------------------|---------|------|
| - | | HW TYPE : Customer Evaluation Product(s): ADF41513 PLL : ADA4625 Opamp, ADF5709 VCO PACKAGE : 24-lead 4X4X0.75 LFCSP-family : Pitch-pitch StyleVendor Style Onboard ADF5709 VCO <User Define> <User Define> | | | | | | | |
| HARDWARE SERVICES | | | | | | | | | |
| HARDWARE SYSTEMS | | | | | | | | | |
| TEST ENGINEER | | | | | | | | | |
| COMPONENT ENGINEER | | | | | | | | | |
| TEST PROCESS | | | | | | | | | |
| - | | | | | | | | | |
| HARDWARE RELEASE | | | | | | | | | |
| DESIGNER A. Andrews | | MASTER PROJECT TEMPLATE TBD | TESTER TEMPLATE no_template | DRAWING NO. 02_067120 | REV. B | | | | |
| PTD ENGINEER <PTD_ENGINEER> | | UNLESS OTHERWISE SPECIFIED DIMENSIONS ARE IN INCHES TOLERANCES | | | | | | | |
| CHECKER | | DECIMALS X.XX +0.010 X.XXX +0.005 | FRACTIONS +1/32 | ANGLES +2 | SIZE D | SCALE 1:1 | CODE ID NO. CodeID | SHEET 1 | OF 5 |
| - | | | | | | | | | |

8

7

6

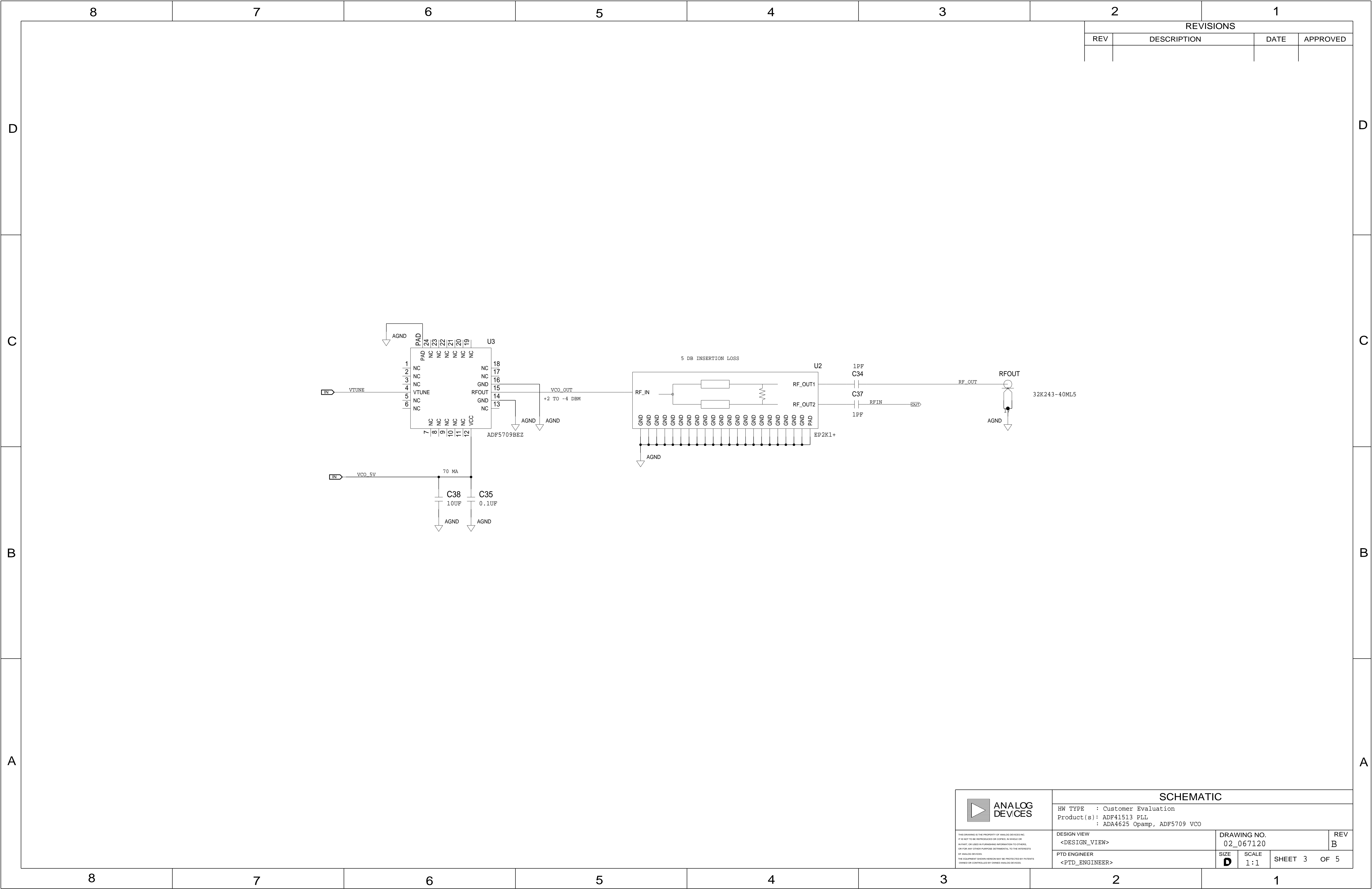
5

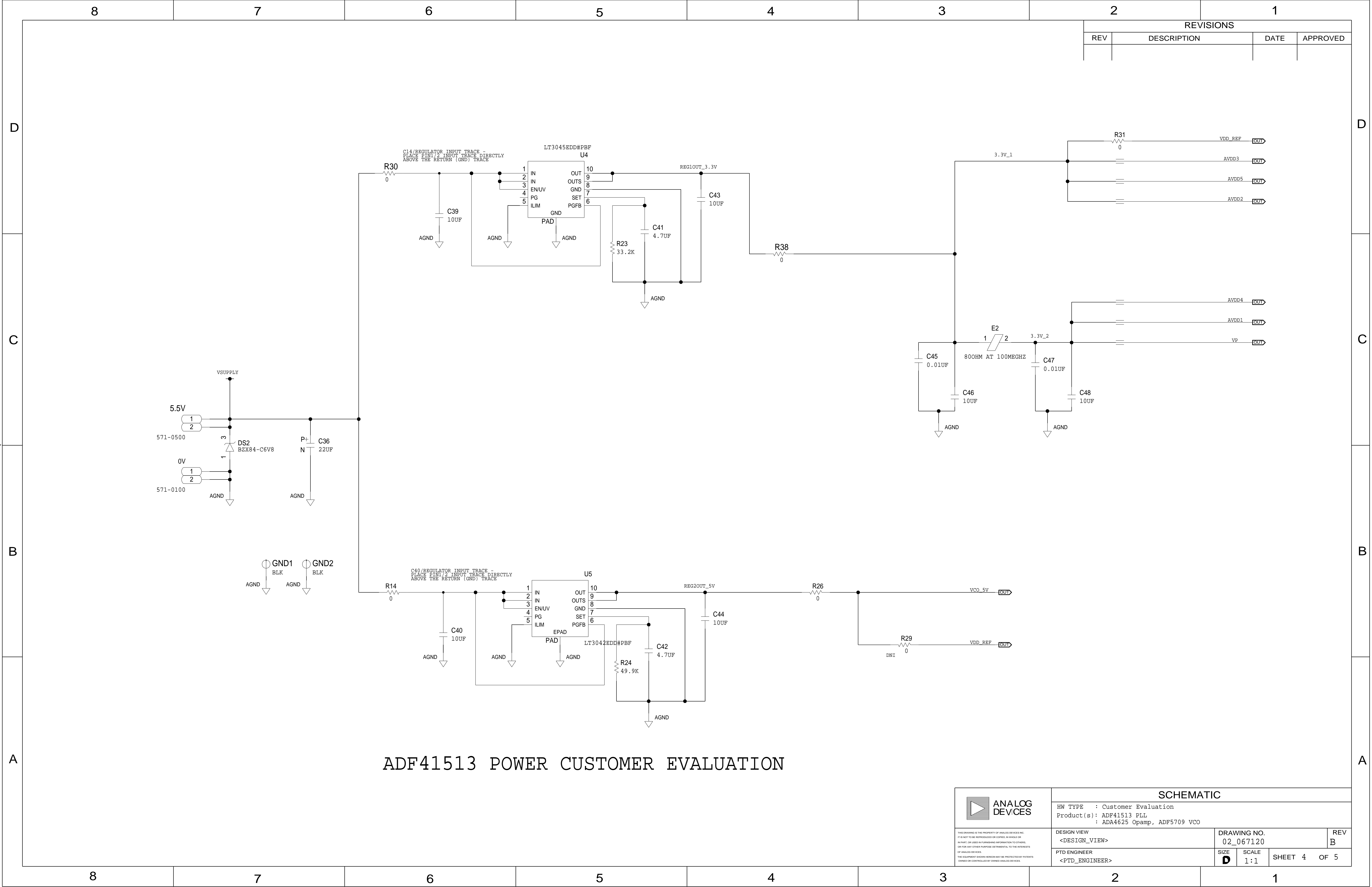
4

3

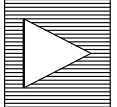
2

1





ADF41513 POWER CUSTOMER EVALUATION

| | | | | |
|---|---|--------------------------|--------------|--------------|
|  <div>ANALOG DEVICES</div> <div><small>THIS DRAWING IS THE PROPERTY OF ANALOG DEVICES INC. IT IS NOT TO BE REPRODUCED OR COPIED IN WHOLE OR IN PART, OR USED IN FURNISHING INFORMATION TO OTHERS, OR FOR ANY OTHER PURPOSE DETRIMENTAL TO THE INTERESTS OF ANALOG DEVICES. THE EQUIPMENT SHOWN HEREON MAY BE PROTECTED BY PATENTS OWNED OR CONTROLLED BY ANALOG DEVICES.</small></div> | SCHEMATIC | | | |
| | HW TYPE : Customer Evaluation Product(s): ADF41513 PLL : ADA4625 Opamp, ADF5709 VCO | | | |
| | DESIGN VIEW <DESIGN_VIEW> | DRAWING NO. 02_067120 | | REV B |
| | PTD ENGINEER <PTD_ENGINEER> | SIZE D | SCALE 1:1 | SHEET 4 OF 5 |

