

PLL Software Installation Guide

REQUIRED EQUIPMENT

Evaluation board control software installation package
provided on CD or downloaded from analog.com
SDP daughter board or ADF4xxx USB adapter board
PC running Windows® XP or higher

SUPPORTED EVALUATION BOARDS

EV-ADF4001SD1Z
EV-ADF4002SD1Z
EV-ADF4106SD1Z
EV-ADF4108EB1Z, EV-ADF4108EB2Z
EV-ADF41020EB1Z
EVAL-ADF4113EBZ1, EVAL-ADF4113EBZ2,
EV-ADF4113HVSD1Z
EV-ADF411XSD1Z
EVAL-ADF4150EB1Z, EVAL-ADF4150HVEB1Z
EVAL-ADF4151EB1Z
EV-ADF4153SD1Z
EV-ADF4153ASD1Z
EVAL-ADF4154EBZ1
EV-ADF4156SD1Z
EV-ADF4157SD1Z
EVAL-ADF4158EB1Z
EV-ADF4159EB1Z, EV-ADF4159EB3Z
EV-ADF4193SD1Z, EV-ADF4193SD2Z
EV-ADF4196SD1Z
EVAL-ADF4350EB1Z, EVAL-ADF4350EB2Z
EVAL-ADF4351EB1Z

EV-ADF4360-0EB1Z
EV-ADF4360-1EB1Z
EV-ADF4360-2EB1Z
EV-ADF4360-3EB1Z
EV-ADF4360-4EB1Z
EV-ADF4360-5EB1Z
EV-ADF4360-6EB1Z
EV-ADF4360-7EB1Z
EV-ADF4360-8EB1Z
EV-ADF4360-9EB1Z
EV-ADF4355SD1Z
EV-ADF4355-2SD1Z
EV-ADF4355-3SD1Z
EV-ADF4155SD1Z
EV-ADF5355SD1Z
EV-ADF4356SD1Z
EV-ADF5356SD1Z
EV-ADF5610SD1Z
EV-ADF5902SD1Z

CONTENTS OF INSTALLATION PACKAGE (MSI FILE)

The MSI file contains the evaluation board control software, drivers for the SDP platform, and drivers for the ADF4xxx USB platform.

INTRODUCTION

This user guide details the installation procedure for PLL and VCO evaluation board control software and drivers.

TABLE OF CONTENTS

Required Equipment 1
 Supported Evaluation Boards 1
 Contents of Installation Package (MSI File) 1
 Introduction 1
 Revision History 2

Windows XP Installation Procedure.....3
 SDP Evaluation Board4
 ADF4xxx USB Board5
 Windows Vista/Windows 7 Installation Procedure.....6

REVISION HISTORY

2/2019—Rev. C to Rev. D
 Changes to Supported Evaluation Boards Section..... 1

12/2018—Rev. B to Rev. C
 Changes to Supported Evaluation Boards Section..... 1

8/2015—Rev. A to Rev. B
 Changes to Supported Evaluation Boards Section..... 1

1/2014—Rev. 0 to Rev. A
 Changes to Supported Evaluation Boards Section.....1
 Change to Windows XP Installation Procedure Section3
 Change to Windows Vista/Windows 7 Installation
 Procedure Section.....6

9/2012—Revision 0: Initial Version

WINDOWS XP INSTALLATION PROCEDURE

1. Do not connect the evaluation board.
2. Run the .msi/.exe file provided, for example, **ADI_Int-N_Setup_v7_4_3.msi** or **ADF435x_Setup_v4_3_1.exe**.
3. The installer downloads and installs Microsoft® .NET Framework 3.5, if required.

If an Internet connection is not available

- Cancel the installation.
- Run and install WindowsInstaller-KB893803-v2-x86.exe (provided on CD).
- Restart the computer, if required.
- Run and install dotnetfx35.exe (provided on CD).
- Repeat Step 2.

4. Click **Next**.

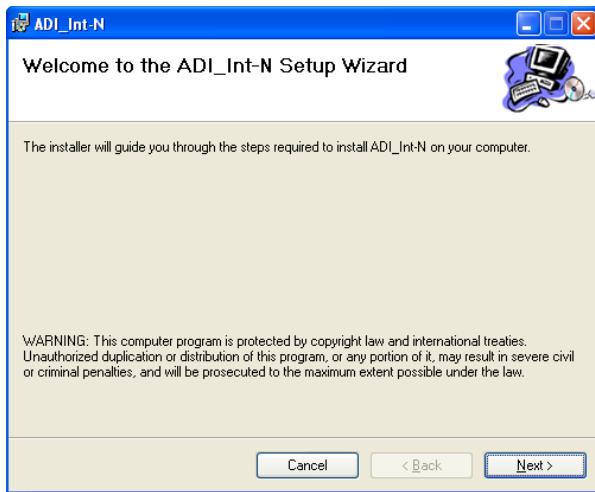


Figure 1. Setup Wizard

5. Choose an installation directory and click **Next**.

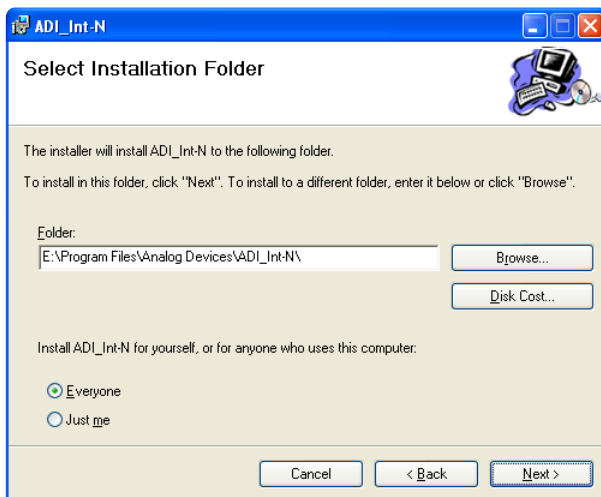


Figure 2. Select Installation Folder

6. Click **Next**.

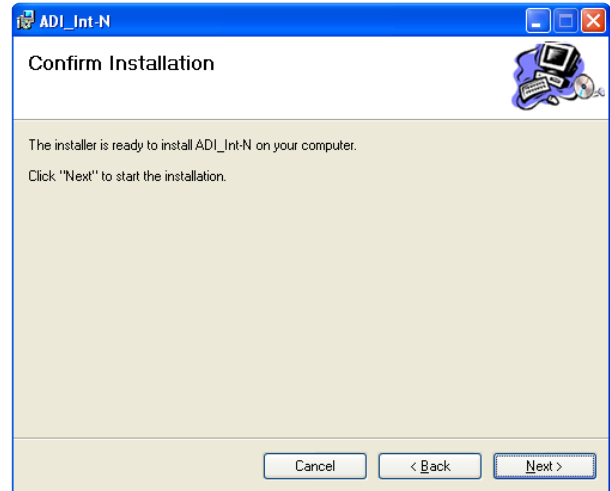


Figure 3. Confirm Installation

7. Click **Continue Anyway**.



Figure 4. Software Installation

8. Click **Close**.

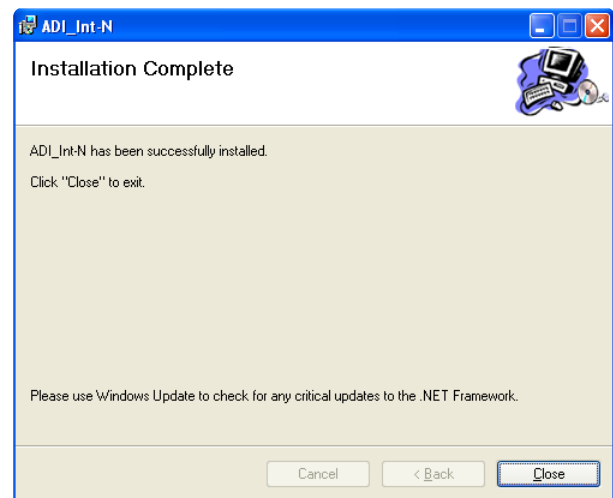


Figure 5. Installation Complete

9. Connect the evaluation board. Windows should automatically detect the evaluation board.

SDP EVALUATION BOARD

1. Choose **Yes, this time only** and click **Next**.



Figure 6. Found New Hardware Wizard

3. Click **Finish**.

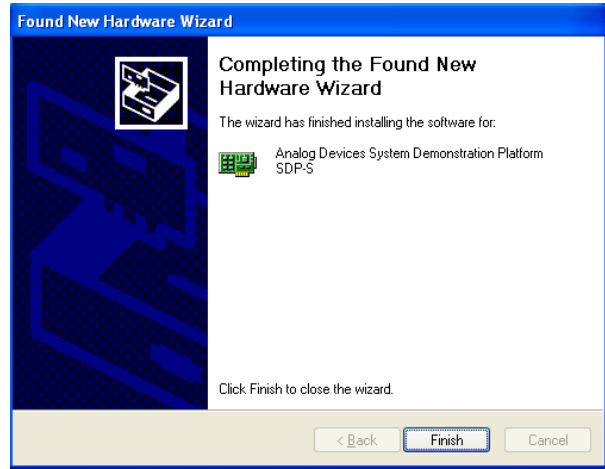


Figure 8. Completing the Found New Hardware Wizard

2. Choose **Install the software automatically (Recommended)** and click **Next**.

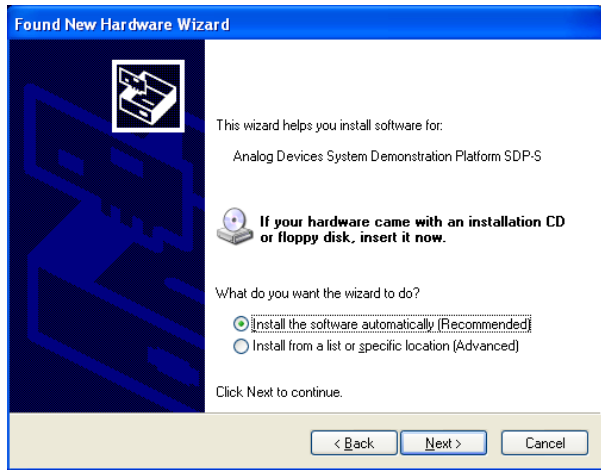


Figure 7. Installing the Software Automatically

ADF4xxx USB BOARD

1. Choose **Yes, this time only** and click **Next**.

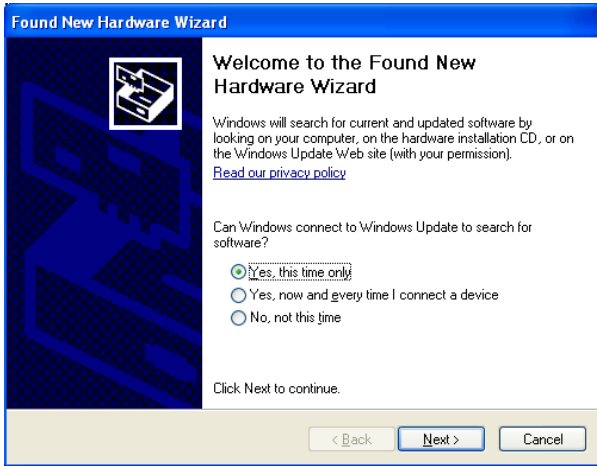


Figure 9. Found New Hardware Wizard

2. Choose **Install the software automatically (Recommended)** and click **Next**.

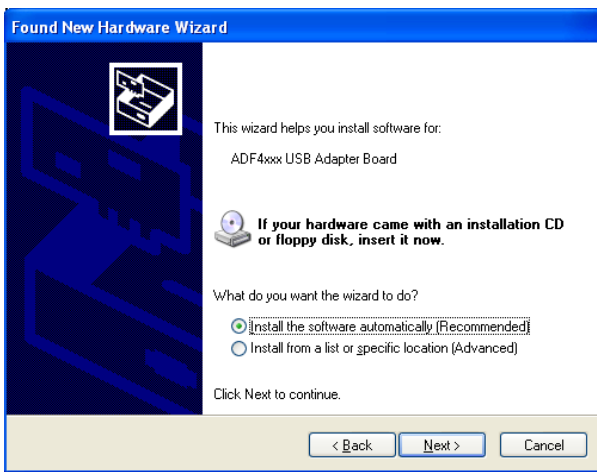


Figure 10. Installing the Software Automatically

3. Click **Continue Anyway**.

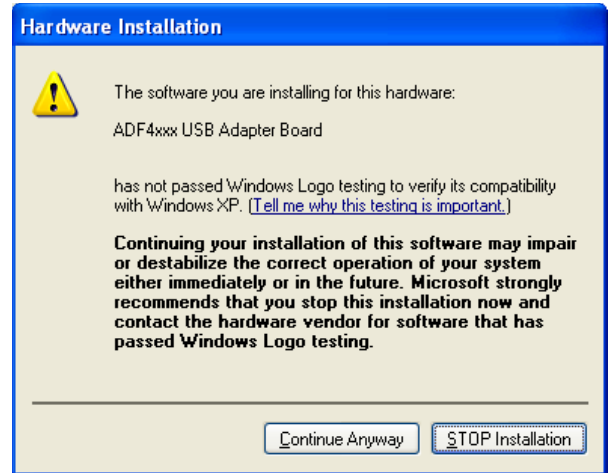


Figure 11. Hardware Installation Complete

4. Click **Finish**.

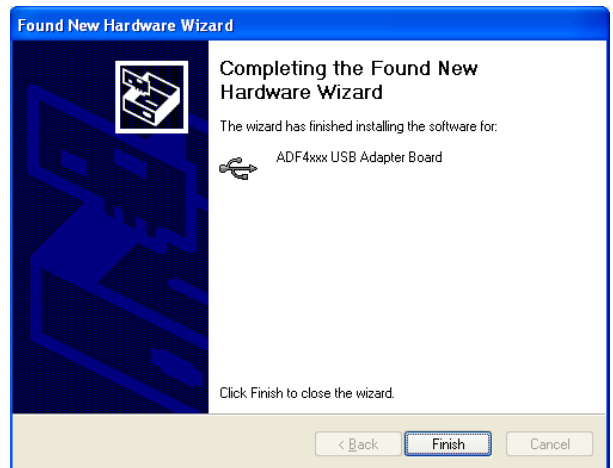


Figure 12. Completing the Found New Hardware Wizard

WINDOWS VISTA/WINDOWS 7 INSTALLATION PROCEDURE

1. Do not connect the evaluation board.
2. Run the .msi/.exe file provided, for example, **ADI_Int-N_Setup_v7_4_3.msi** or **ADF435x_Setup_v4_3_1.exe**.
3. Note that the installer downloads and installs Microsoft .NET Framework 3.5, if required.

If an Internet connection is not available

- Cancel the installation.
- Run and install WindowsInstaller-KB893803-v2-x86.exe (provided on CD).
- Restart the computer, if required.
- Run and install dotnetfx35.exe (provided on CD).
- Repeat Step 2.

4. Click **Next**.

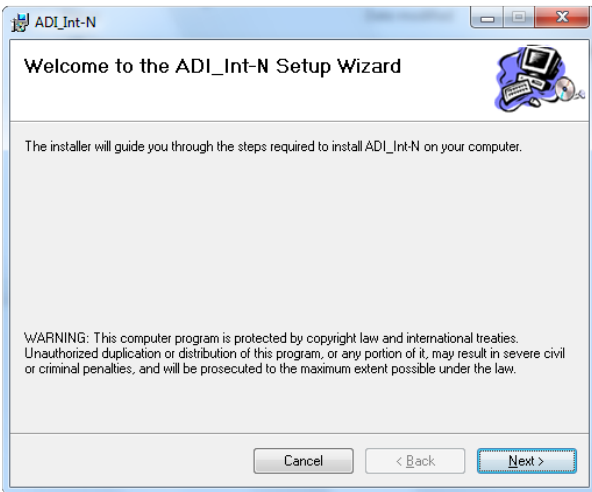


Figure 13. Setup Wizard

5. Choose an installation directory and click **Next**.

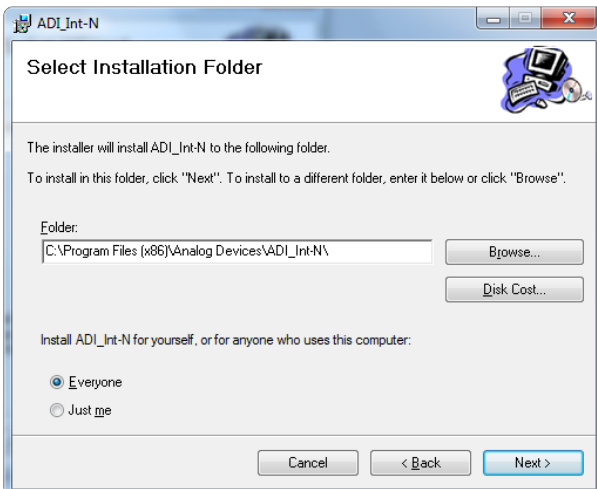


Figure 14. Select Installation Folder

6. Click **Next**.

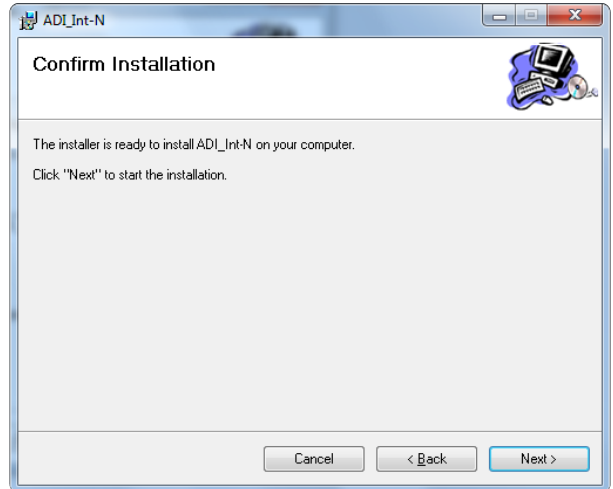


Figure 15. Confirm Installation

7. Click **Install**.

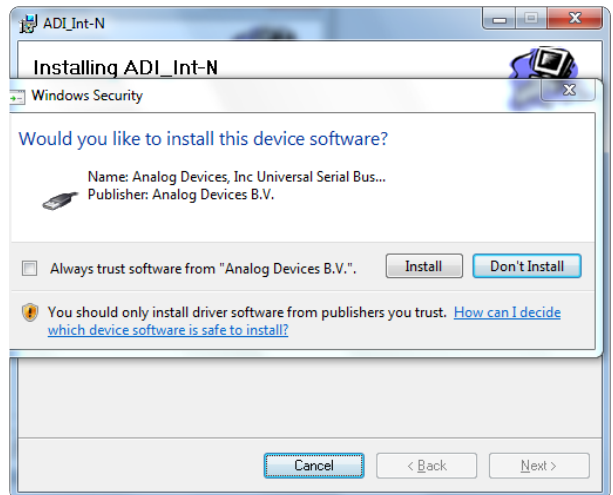


Figure 16. Software Installation

8. Click **Close**.

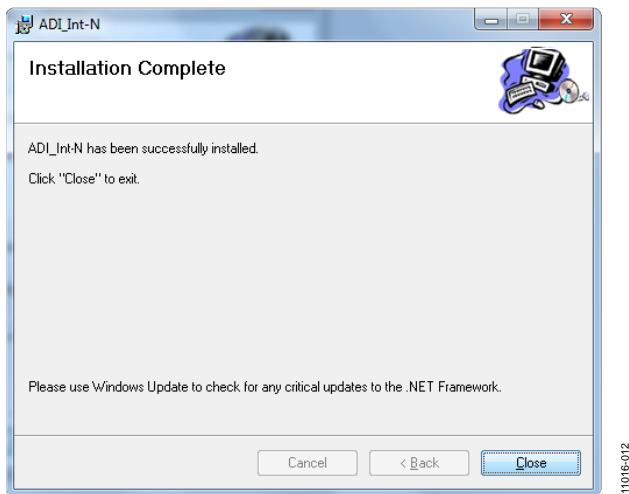


Figure 17. Installation Complete

9. Connect the evaluation board. Windows will detect and install the driver automatically.

NOTES

**ESD Caution**

ESD (electrostatic discharge) sensitive device. Charged devices and circuit boards can discharge without detection. Although this product features patented or proprietary protection circuitry, damage may occur on devices subjected to high energy ESD. Therefore, proper ESD precautions should be taken to avoid performance degradation or loss of functionality.

Legal Terms and Conditions

By using the evaluation board discussed herein (together with any tools, components documentation or support materials, the "Evaluation Board"), you are agreeing to be bound by the terms and conditions set forth below ("Agreement") unless you have purchased the Evaluation Board, in which case the Analog Devices Standard Terms and Conditions of Sale shall govern. Do not use the Evaluation Board until you have read and agreed to the Agreement. Your use of the Evaluation Board shall signify your acceptance of the Agreement. This Agreement is made by and between you ("Customer") and Analog Devices, Inc. ("ADI"), with its principal place of business at One Technology Way, Norwood, MA 02062, USA. Subject to the terms and conditions of the Agreement, ADI hereby grants to Customer a free, limited, personal, temporary, non-exclusive, non-sublicensable, non-transferable license to use the Evaluation Board FOR EVALUATION PURPOSES ONLY. Customer understands and agrees that the Evaluation Board is provided for the sole and exclusive purpose referenced above, and agrees not to use the Evaluation Board for any other purpose. Furthermore, the license granted is expressly made subject to the following additional limitations: Customer shall not (i) rent, lease, display, sell, transfer, assign, sublicense, or distribute the Evaluation Board; and (ii) permit any Third Party to access the Evaluation Board. As used herein, the term "Third Party" includes any entity other than ADI, Customer, their employees, affiliates and in-house consultants. The Evaluation Board is NOT sold to Customer; all rights not expressly granted herein, including ownership of the Evaluation Board, are reserved by ADI. CONFIDENTIALITY. This Agreement and the Evaluation Board shall all be considered the confidential and proprietary information of ADI. Customer may not disclose or transfer any portion of the Evaluation Board to any other party for any reason. Upon discontinuation of use of the Evaluation Board or termination of this Agreement, Customer agrees to promptly return the Evaluation Board to ADI. ADDITIONAL RESTRICTIONS. Customer may not disassemble, decompile or reverse engineer chips on the Evaluation Board. Customer shall inform ADI of any occurred damages or any modifications or alterations it makes to the Evaluation Board, including but not limited to soldering or any other activity that affects the material content of the Evaluation Board. Modifications to the Evaluation Board must comply with applicable law, including but not limited to the RoHS Directive. TERMINATION. ADI may terminate this Agreement at any time upon giving written notice to Customer. Customer agrees to return to ADI the Evaluation Board at that time. LIMITATION OF LIABILITY. THE EVALUATION BOARD PROVIDED HEREUNDER IS PROVIDED "AS IS" AND ADI MAKES NO WARRANTIES OR REPRESENTATIONS OF ANY KIND WITH RESPECT TO IT. ADI SPECIFICALLY DISCLAIMS ANY REPRESENTATIONS, ENDORSEMENTS, GUARANTEES, OR WARRANTIES, EXPRESS OR IMPLIED, RELATED TO THE EVALUATION BOARD INCLUDING, BUT NOT LIMITED TO, THE IMPLIED WARRANTY OF MERCHANTABILITY, TITLE, FITNESS FOR A PARTICULAR PURPOSE OR NON-INFRINGEMENT OF INTELLECTUAL PROPERTY RIGHTS. IN NO EVENT WILL ADI AND ITS LICENSORS BE LIABLE FOR ANY INCIDENTAL, SPECIAL, INDIRECT, OR CONSEQUENTIAL DAMAGES RESULTING FROM CUSTOMER'S POSSESSION OR USE OF THE EVALUATION BOARD, INCLUDING BUT NOT LIMITED TO LOST PROFITS, DELAY COSTS, LABOR COSTS OR LOSS OF GOODWILL. ADI'S TOTAL LIABILITY FROM ANY AND ALL CAUSES SHALL BE LIMITED TO THE AMOUNT OF ONE HUNDRED US DOLLARS (\$100.00). EXPORT. Customer agrees that it will not directly or indirectly export the Evaluation Board to another country, and that it will comply with all applicable United States federal laws and regulations relating to exports. GOVERNING LAW. This Agreement shall be governed by and construed in accordance with the substantive laws of the Commonwealth of Massachusetts (excluding conflict of law rules). Any legal action regarding this Agreement will be heard in the state or federal courts having jurisdiction in Suffolk County, Massachusetts, and Customer hereby submits to the personal jurisdiction and venue of such courts. The United Nations Convention on Contracts for the International Sale of Goods shall not apply to this Agreement and is expressly disclaimed.