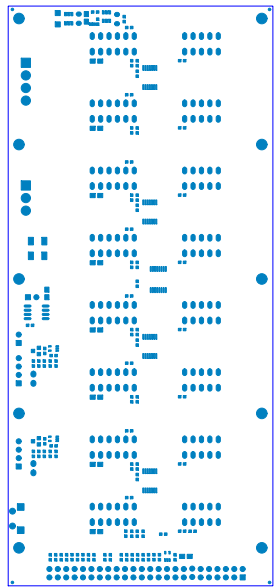
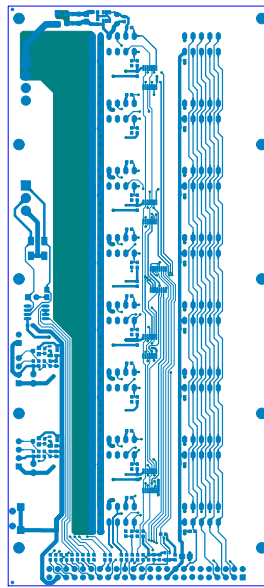
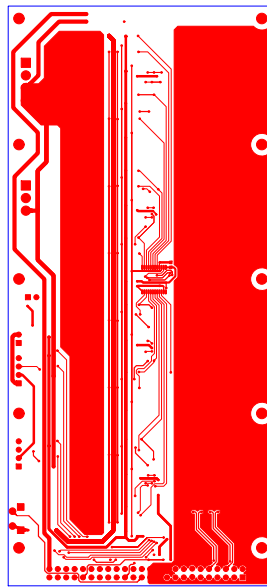


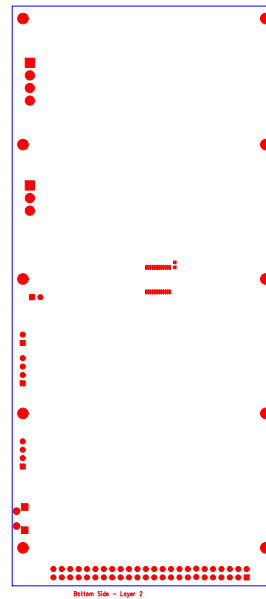
[Sakernas Top](#)

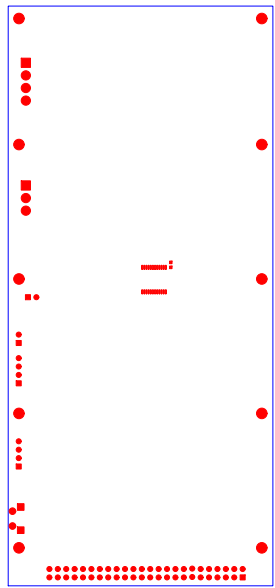


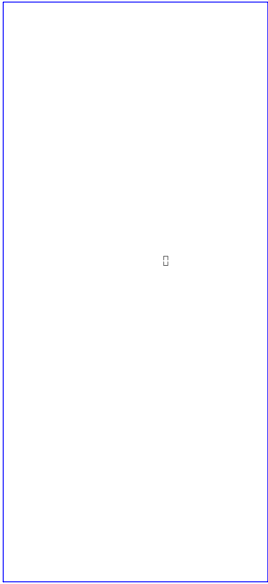
Pattern 10



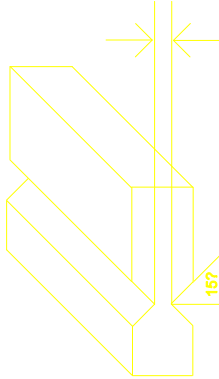




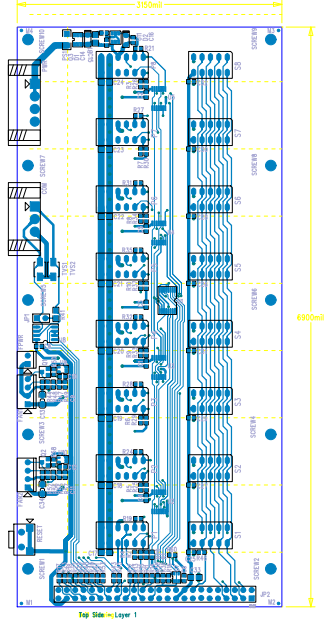




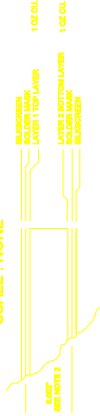
Bottom Site - Layer 2



SCORE DETAIL



2 LAYER CONSTRUCTION DETAIL
SCALE : NONE



1. BOARD TO BE FABRICATED PER IPC-6012A, CLASS 2.
2. MATERIAL: POLYLAD FR-70HR OR EQUIVALENT. OUTER LAYERS 1/2 OZ/SQFT
CU INNER LAYERS 1/2 OZ/SQFT CU FINISHED 0.002
OZ/SQFT. VENDOR TO ADVISE VENDOR MAY ADJUST
THICKNESS TO FULL FILL NOTE.
3. PLATING: ADDITIONAL CU PLATING 1 OZ/SQFT
MINIMUM PTH BARREL THICKNESS = 0.012" MINIMUM AVERAGE
PER IPC-6012A WITH AMENDMENT 1, CLASS 2 REQUIREMENTS
WITH NO SINGLE MEASUREMENT LESS THAN 0.00071 IN THE PLATED HOLES.
4. FINISH: SURFACES TO BE COATED BY ENIG OF 2 TO 10 MICRONS OVER
A MINIMUM OF 80-200 MICRONS OF LOW STRESS NICKEL.
5. SOLDERMASK: SOLDER MASK TO BE TRANSPARENT GREEN LPI BOTH SIDES PER GERBER FILES.
6. SILKSCREEN: WHITE EPOXY INK APPLY TO BOTH SIDES PER GERBER FILES.
7. ARTWORK: MINIMUM FEATURE SIZE = 0.00462
MINIMUM AIR GAP = 0.00448
8. ALL DIMENSIONS ARE IN INCHES.
9. CONTROLLED IMPEDANCE: BOARD TO BE BUILT TO YIELD CONTROLLED IMPEDANCE
OF 50 OHMS +/- 10% ON ALL 0.007, 0.006", 0.0010" LINE WIDTHS
10. DO NOT ADD NON-FUNCTIONAL COPPER THEIVING ON OPEN AREAS OF
OUTER LAYERS OR HOLE.
11. VIAS SHOULD BE CURED ACCORDING TO ONE OF THE FOLLOWING METHODS.
METHOD 1: VIAS MUST BE FILLED WITH SOLDERMASK MATERIAL AFTER
ELECTROLESS NICKEL/IMMERSION GOLD AND BEFORE PRIMARY LPI MASK
AFTER THE FILL IS CURED, THE PRIMARY MASK IS THEN APPLIED WITH NO
VIA APERTURES BOTH SIDES.
METHOD 2: AFTER APPLICATION OF FULL BODY ELECTROLESS
NICKEL/IMMERSION GOLD, APPLY PRIMARY LPI MASK WITH REDUCED
VIA APERTURES THAT ARE 6 MILS LARGER THAN DRILLED HOLE DIAMETER
BOTH SIDES. THE APPLY SOLDER MASK PLUG ON COMPONENT SIDE.
12. TEARDROP PADS ARE ACCEPTABLE WHERE NEEDED.
13. REMOVAL OF NON-FUNCTIONAL PADS ON LAYERS 1 AND 4 IS ACCEPTABLE
14. USE IPC-D-358A NETLIST AS SUPPLIED FOR CHECKING.
15. V SCORE 1 LINE ON BOTH SIDES OF THE BOARD. SEE DETAIL.

1. ALL DIMENSIONS UNLESS OTHERWISE SPECIFIED ARE IN INCHES 2. DIMENSIONS IN PARENTHESES ARE FOR INFORMATION ONLY 3. DIMENSIONS IN PARENTHESES ARE FOR INFORMATION ONLY	CONTRACT NO.		DATE		DRAWN: 10/10/13 DESIGNED: 10/10/13 ENGINEERING: 10/10/13 QUALITY: 10/10/13 MANUFACTURING: 10/10/13	FABRICATION DRAWING		CITY: WASHINGTON, DC STATE: MARYLAND COUNTRY: USA PART NO: 701-001-01
	MATERIAL:	SEE NOTES	ENGINEERING:	ENGINEERING:	SIZE:	DWG NO.	REV:	
DO NOT SCALE THIS DRAWING		SCALE:	1:1	8:SET	1	OF	1	