

Circuits from the Lab[®] Reference Designs

Circuits from the Lab[®] reference designs are engineered and tested for quick and easy system integration to help solve today's analog, mixed-signal, and RF design challenges. For more information and/or support, visit www.analog.com/CN0359.

Devices Connected/Referenced			
AD8253	10 MHz, 20 V/ μ s, G = 1, 10, 100, 1000, iCMOS Programmable Gain Instrumentation Amplifier	ADuCM360	Low Power, Precision Analog Microcontroller with Dual Sigma-Delta ADCs, ARM Cortex-M3
ADA4627-1	30 V, High Speed, Low Noise, Low Bias Current, JFET Operational Amplifier	AD8542	CMOS Rail-to-Rail General-Purpose Amplifiers
ADA4000-1	Low Cost, Precision JFET Input Operational Amplifiers	ADP2300	1.2 A, 20 V, 700 kHz/1.4 MHz, Nonsynchronous Step-Down Regulator
ADA4638-1	30 V, Zero-Drift, Rail-to-Rail Output Precision Amplifier	ADP1613	650 kHz/1.3 MHz, Step-Up PWM DC-to-DC Switching Converters
ADA4528-2	Precision, Ultralow Noise, RRIO, Dual, Zero-Drift Op Amp	ADG1211	Low Capacitance, Low Charge Injection, ± 15 V/+12 V, iCMOS Quad SPST Switches
ADA4077-2	4 MHz, 7 nV/ $\sqrt{\text{Hz}}$, Low Offset and Drift, High Precision Amplifiers	ADG1419	2.1 Ω On Resistance, ± 15 V/+12 V/ ± 5 V, iCMOS SPDT Switch
AD8592	CMOS, Single-Supply, Rail-to-Rail Input/Output Operational Amplifiers with Shutdown	ADM3483	3.3 V Slew Rate Limited, Half Duplex, RS-485/RS-422 Transceivers

Fully Automatic High Performance Conductivity Measurement System

EVALUATION AND DESIGN SUPPORT

Circuit Evaluation Boards

[CN-0359 Circuit Evaluation Board \(EVAL-CN0359-EB1Z\)](#)

Design and Integration Files

[Schematics](#), [Layout Files](#), [Bill of Materials](#)

CIRCUIT FUNCTION AND BENEFITS

The circuit shown in Figure 1 is a completely self-contained, microprocessor controlled, highly accurate conductivity measurement system ideal for measuring the ionic content of liquids, water quality analysis, industrial quality control, and chemical analysis.

A carefully selected combination of precision signal conditioning components yields an accuracy of better than 0.3% over a conductivity range of 0.1 μ S to 10 S (10 M Ω to 0.1 Ω) with no calibration requirements.

Automatic detection is provided for either 100 Ω or 1000 Ω platinum (Pt) resistance temperature devices (RTDs), allowing

the conductivity measurement to be referenced to room temperature.

The system accommodates 2- or 4-wire conductivity cells, and 2-, 3-, or 4-wire RTDs for added accuracy and flexibility.

The circuit generates a precise ac excitation voltage with minimum dc offset to avoid a damaging polarization voltage on the conductivity electrodes. The amplitude and frequency of the ac excitation is user-programmable.

An innovative synchronous sampling technique converts the peak-to-peak amplitude of the excitation voltage and current to a dc value for accuracy and ease in processing using the dual, 24-bit Σ - Δ ADC contained within the precision analog microcontroller.

The intuitive user interface is an LCD display and an encoder push button. The circuit can communicate with a PC using an RS-485 interface if desired, and operates on a single 4 V to 7 V supply.

Rev. B

Circuits from the Lab reference designs from Analog Devices have been designed and built by Analog Devices engineers. Standard engineering practices have been employed in the design and construction of each circuit, and their function and performance have been tested and verified in a lab environment at room temperature. However, you are solely responsible for testing the circuit and determining its suitability and applicability for your use and application. Accordingly, in no event shall Analog Devices be liable for direct, indirect, special, incidental, consequential or punitive damages due to any cause whatsoever connected to the use of any Circuits from the Lab circuits. (Continued on last page)

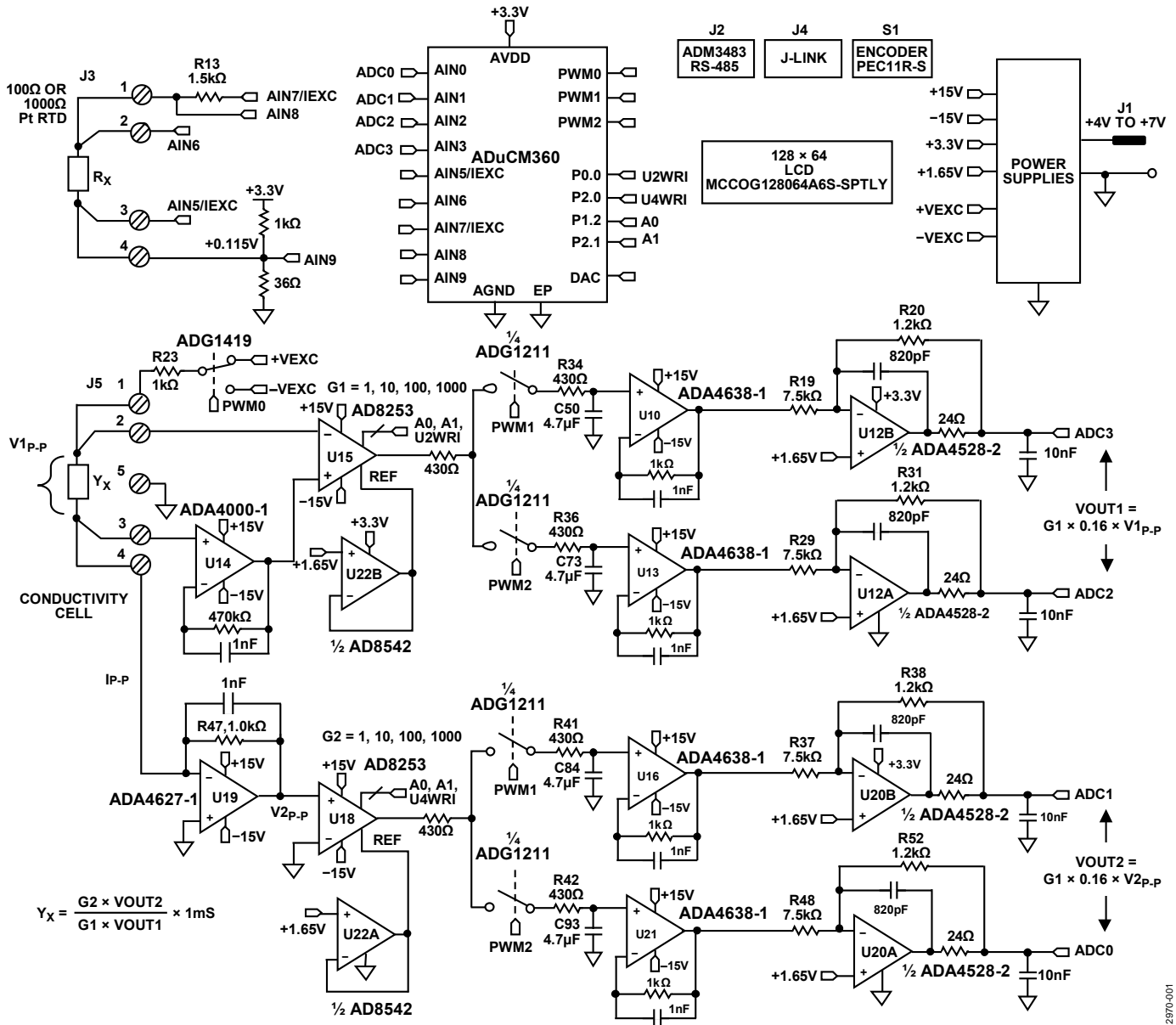


Figure 1. High Performance Conductivity Measurement System (Simplified Schematic: All Connections and Decoupling Not Shown)

CIRCUIT DESCRIPTION

The excitation square wave for the conductivity cell is generated by switching the **ADG1419** between the +VEXC and -VEXC voltages using the PWM output of the **ADuCM360** microcontroller. It is important that the square wave has a precise 50% duty cycle and a very low dc offset. Even small dc offsets can damage the cell over a period of time.

The +VEXC and -VEXC voltages are generated by the **ADA4077-2** op amps (U9A and U9B), and their amplitudes are controlled by the DAC output of the **ADuCM360**, as shown in Figure 2.

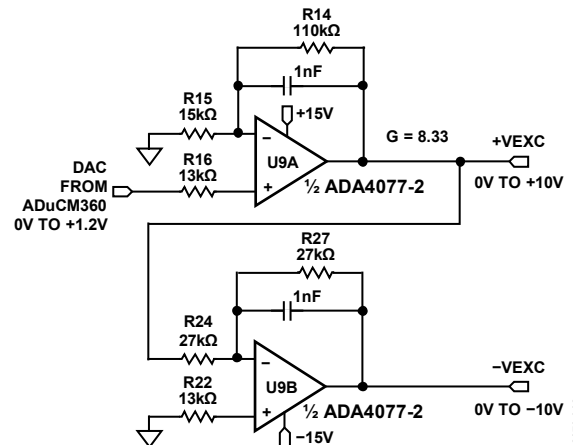


Figure 2. Excitation Voltage Sources

The [ADA4077-2](#) has a typical offset voltage of 15 μV (A grade), a 0.4 nA bias current, a 0.1 nA offset current, and an output current of up to ± 10 mA, with a dropout voltage of less than 1.2 V. The U9A op amp has a closed-loop gain of 8.33 and converts the [ADuCM360](#) internal DAC output (0 V to 1.2 V) to the +VEXC voltage of 0 V to 10 V. The U9B op amp inverts the +VEXC and generates the -VEXC voltage. R22 is chosen such that $R22 = R24 \parallel R27$ to achieve first-order bias current cancellation. The error due to the 15 μV offset voltage of U9A is approximately $(2 \times 15 \mu\text{V}) \div 10 \text{ V} = 3$ ppm. The primary error introduced by the inverting stage is therefore the error in the resistor matching between R24 and R27.

The [ADG1419](#) is a 2.1 Ω , on-resistance SPDT analog switch with an on-resistance flatness of 50 m Ω over a ± 10 V range, making it ideal for generating a symmetrical square wave from the $\pm\text{VEXC}$ voltages. The symmetry error introduced by the [ADG1419](#) is typically 50 m $\Omega \div 1 \text{ k}\Omega = 50$ ppm. Resistor R23 limits the maximum current through the sensor to $10 \text{ V} / 1 \text{ k}\Omega = 10$ mA.

The voltage applied to the cell, V1, is measured with the [AD8253](#) instrumentation amplifier (U15). The positive input to U15 is buffered by the [ADA4000-1](#) (U14). The [ADA4000-1](#) is chosen because of its low bias current of 5 pA to minimize the error in measuring low currents associated with low conductivities. The negative input of the [AD8253](#) does not require buffering.

The offset voltages of U14 and U15 are removed by the synchronous sampling stage and do not affect the measurement accuracy.

U15 and U18 are [AD8253](#) 10 MHz, 20 V/ μs , programmable gain ($G = 1, 10, 100, 1000$) instrumentation amplifiers with gain error of less than 0.04%. The [AD8253](#) has a slew rate of 20 V/ μs and a settling time of 1.8 μs to 0.001% for $G = 1000$. Its common-mode rejection is typically 120 dB.

The U19 ([ADA4627-1](#)) stage is a precision current to voltage converter that converts the current through the sensor to a voltage. The [ADA4627-1](#) has an offset voltage of 120 μV (typical, A grade), a bias current of 1 pA (typical), a slew rate of 40 V/ μs , and a 550 ns settling time to 0.01%. The low bias current and offset voltage make it ideal for this stage. The symmetry error produced by the 120 μV offset error is only $120 \mu\text{V} / 10 \text{ V} = 12$ ppm.

The U22A and U22B ([AD8542](#)) buffers supply the 1.65 V reference to the U18 and U15 instrumentation amplifiers, respectively.

The following is a description of the remainder of the signal path in the voltage channel (U17A, U17B, U10, U13, U12A, and U12B). The operation of the current channel (U17C, U17D, U16, U21, U20A, and U20B) is identical.

The [ADuCM360](#) generates the PWM0 square wave switching signal for the [ADG1419](#) switch as well as PWM1 and PWM2 synchronizing signals for the synchronous sampling stages. The cell voltage and the three timing waveforms are shown in Figure 3.

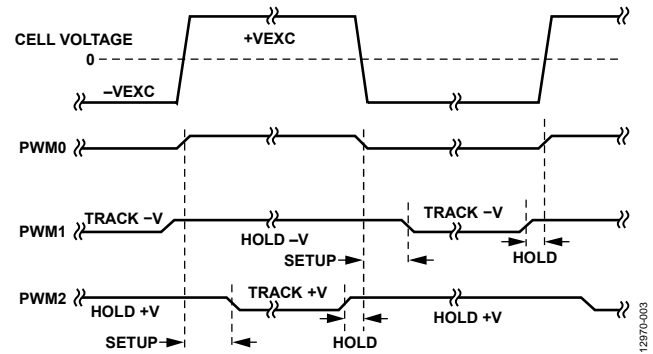


Figure 3. Cell Voltage and Track-and-Hold Timing Signals

The output of the [AD8253](#) in amp (U15) drives two parallel track-and-hold circuits composed of [ADG1211](#) switches (U17A/U17B), series resistors (R34/R36), hold capacitors (C50/C73), and unity-gain buffers (U10/U13).

The [ADG1211](#) is a low charge injection, quad SPST analog switch, operating on a ± 15 V power supply with up to ± 10 V input signals. The maximum charge injection due to switching is 4 pC, which produces a voltage error of only $4 \text{ pC} \div 4.7 \mu\text{F} = 0.9 \mu\text{V}$.

The PWM1 signal causes the U10 track-and-hold buffer to track the negative cycle of the sensor voltage and then hold it until the next track cycle. The output of the U10 track-and-hold buffer is therefore a dc level corresponding to the negative amplitude of the sensor voltage square wave.

Similarly, the PWM2 signal causes the U13 track-and-hold buffer to track the positive cycle of the sensor voltage and then hold it until the next track cycle. The output of the U13 track-and-hold buffer is therefore a dc level corresponding to the positive amplitude of the sensor voltage square wave.

The bias current of the track-and-hold buffers ([ADA4638-1](#)) is 45 pA typical, and the leakage current of the [ADG1211](#) switch is 20 pA typical. Therefore, the worst-case leakage current on the 4.7 μF hold capacitors is 65 pA. For a 100 Hz excitation frequency, the period is 10 ms. The drop voltage over one-half the period (5 ms) due to the 65 pA leakage current is $(65 \text{ pA} \times 5 \text{ ms}) \div 4.7 \mu\text{F} = 0.07 \mu\text{V}$.

The offset voltage of the [ADA4638-1](#) zero-drift amplifier is only 0.5 μV typical and contributes negligible error.

The final stages in the signal chain before the ADC are the [ADA4528-2](#) inverting attenuators (U12A and U12B) that have a gain of -0.16 and a common-mode output voltage of +1.65 V. The [ADA4528-2](#) has an offset voltage of 0.3 μV typical and therefore contributes negligible error.

The attenuator stage reduces the ± 10 V maximum signal to ± 1.6 V with a common-mode voltage of $+1.65$ V. This range is compatible with the input range of the [ADuCM360](#) ADC input, which is 0 V to 3.3 V ($1.65 \text{ V} \pm 1.65 \text{ V}$) for an AVDD supply of 3.3 V.

The attenuator stages also provide noise filtering and have a -3 dB frequency of approximately 198 kHz.

The differential output of the voltage channel, VOUT1, is applied to the AIN2 and AIN3 inputs of the [ADuCM360](#). The differential output of the current channel, VOUT2, is applied to the AIN0 and AIN1 inputs of the [ADuCM360](#).

The equations for the two outputs are given by

$$VOUT1 = G1 \times 0.16 \times V1_{P-P} \quad (1)$$

$$VOUT2 = G2 \times 0.16 \times V2_{P-P} \quad (2)$$

The cell current is given by

$$I_{P-P} = V1_{P-P} \times Y_X \quad (3)$$

The $V2_{P-P}$ voltage is given by

$$V2_{P-P} = I_{P-P} \times R47 \quad (4)$$

Solving Equation 4 for I_{P-P} and substituting into Equation 3 yields the following for Y_X :

$$Y_X = \frac{V2_{P-P}}{V1_{P-P} \times R47} \quad (5)$$

Solving Equation 1 and Equation 2 for $V1_{P-P}$ and $V2_{P-P}$ and substituting into Equation 5 yields the following:

$$Y_X = \frac{G2 \times VOUT2}{G1 \times VOUT1 \times R47} \quad (6)$$

$$Y_X = \frac{G2 \times VOUT2}{G1 \times VOUT1} \times 1 \text{ mS} \quad (7)$$

Equation 7 shows that the conductivity measurement depends on $G1$, $G2$, and $R47$, and the ratio of $VOUT2$ to $VOUT1$.

Therefore, a precision reference is not required for the ADCs within the [ADuCM360](#).

The [AD8253](#) gain error ($G1$ and $G2$) is 0.04% maximum, and $R47$ is chosen to be a 0.1% tolerance resistor.

From this point, the resistors in the VOUT1 and VOUT2 signal chain determine the overall system accuracy.

The software sets the gain of each [AD8253](#) as follows:

- If the ADC code is over 93.2% of full scale, the gain of the [AD8253](#) is reduced by a factor of 10 on the next sample.
- If the ADC code is less than 9.13% of full scale, the gain of the [AD8253](#) is increased by a factor of 10 on the next sample.

System Accuracy Measurements

The following four resistors affect the accuracy in the VOUT1 voltage channel: $R19$, $R20$, $R29$, and $R31$.

The following five resistors affect the accuracy in the VOUT2 current channel: $R47$, $R37$, $R38$, $R48$, and $R52$.

Assuming that all nine resistors are 0.1% tolerance, and including the 0.04% gain error of the [AD8253](#), a worst-case error analysis yields approximately 0.6%. The analysis is included in the [CN-0359 Design Support Package](#).

In practice, the resistors are more likely to combine in an RSS manner, and the RSS error due to the resistor tolerances in the positive or negative signal chain is $\sqrt{5} \times 0.1\% = 0.22\%$.

Accuracy measurements were taken using precision resistors from 1Ω to $1 \text{ M}\Omega$ (1 S to $1 \mu\text{S}$) to simulate the conductivity cell. Figure 4 shows the results, and the maximum error is less than 0.1%.

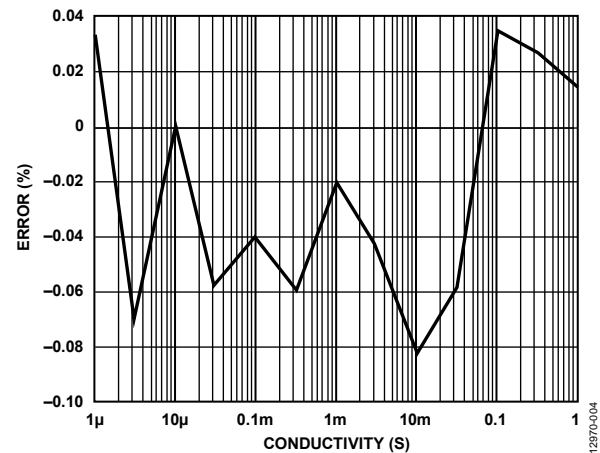


Figure 4. System Error (%) vs. Conductivity of $1 \mu\text{S}$ to 1 S

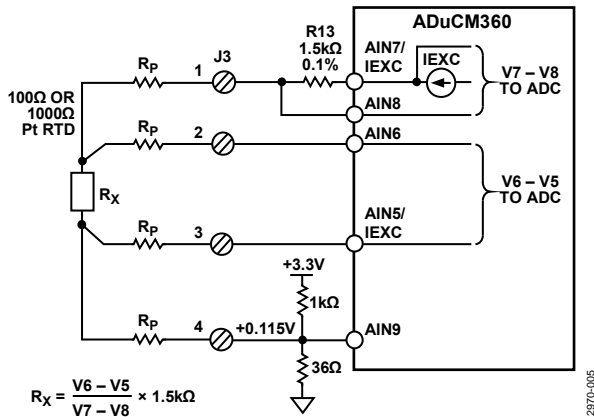
RTD Measurement

Conductivity measuring system accuracy is only as good as its temperature compensation. Because common solution temperature coefficients vary in the order of $1\%/^{\circ}\text{C}$ to $3\%/^{\circ}\text{C}$ or more, measuring instruments with adjustable temperature compensation must be used. Solution temperature coefficients are somewhat nonlinear and usually vary with the actual conductivity, as well. Therefore, calibration at the actual measuring temperature yields the best accuracy.

The [ADuCM360](#) contains two matched, software configurable, excitation current sources. They are individually configurable to provide a current output of $10 \mu\text{A}$ to 1 mA , and matching is better than 0.5%. The current sources allow the [ADuCM360](#) to easily perform 2-wire, 3-wire, or 4-wire measurements for either Pt100 or Pt1000 RTDs. The software also automatically detects if the RTD is Pt100 or Pt1000 during the setup procedure.

The following discussion shows simplified schematics of how the different RTD configurations operate. All mode switching is accomplished in the software, and there is no need to change the external jumper settings.

Figure 5 shows the configuration for 4-wire RTDs.



$$R_x = \frac{V_6 - V_5}{V_7 - V_8} \times 1.5\text{k}\Omega$$

Figure 5. Configuration for 4 Wire RTD Connection

The parasitic resistance in each of the leads to the remote RTD is shown as R_p . The excitation current (IEXC) passes through a precision 1.5 kΩ resistor and the RTD. The on-chip ADC measures the voltage across the resistor ($V_7 - V_8$).

It is important that the R13 resistor and the IEXC excitation current value be chosen such that the ADuCM360 maximum input voltage at AIN7 does not exceed $AV_{DD} - 1.1\text{ V}$; otherwise, the IEXC current source does not function properly.

The RTD voltage is accurately measured using the two sense leads that connect to AIN6 and AIN5. The input impedance is approximately 2 MΩ (unbuffered mode, PGA gain = 1), and the current flowing through the sense lead resistance produces minimum error. The ADC then measures the RTD voltage ($V_6 - V_5$).

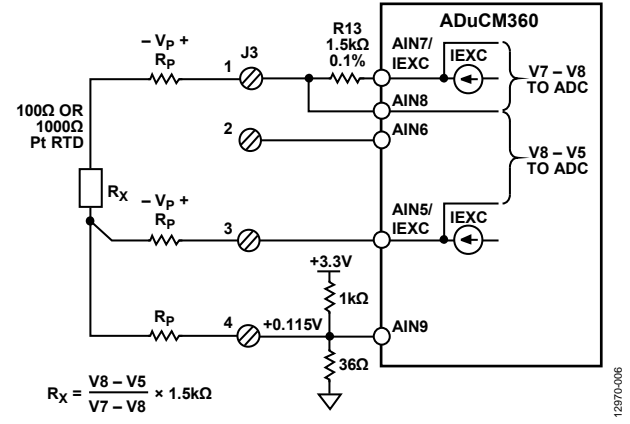
The RTD resistance is then calculated as

$$R_x = \frac{V_6 - V_5}{V_7 - V_8} \times 1.5\text{ k}\Omega \tag{8}$$

The measurement is ratiometric and does not depend on an accurate external reference voltage, only the tolerance of the 1.5 kΩ resistor. In addition, the 4-wire configuration eliminates the error associated with the lead resistances.

The ADuCM360 has a buffered or unbuffered input option. If the internal buffer is activated, the input voltage must be greater than 100 mV. The 1 kΩ/36 Ω resistor divider provides a 115 mV bias voltage to the RTD that allows buffered operation. In the unbuffered mode, Terminal 4 of J3 can be grounded and connected to a grounded shield for noise reduction.

The 3-wire connection is another popular RTD configuration that eliminates lead resistance errors, as shown in Figure 6.

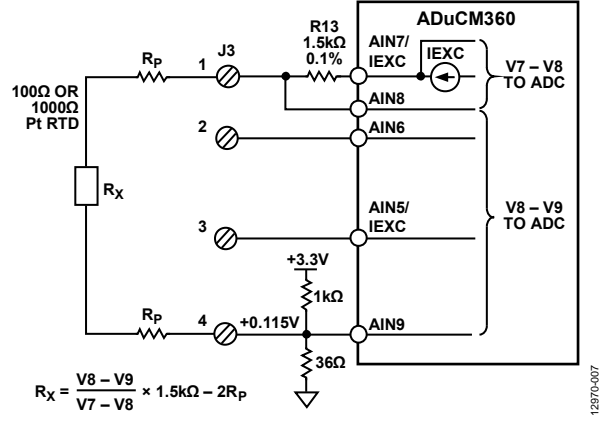


$$R_x = \frac{V_8 - V_5}{V_7 - V_8} \times 1.5\text{k}\Omega$$

Figure 6. Configuration for 3-Wire RTD Connection

The second matched IEXC current source (AIN5/IEXC) develops a voltage across the lead resistance in series with Terminal 3 that cancels the voltage dropped across the lead resistance in series with Terminal 1. The measured $V_8 - V_5$ voltage is therefore free of lead resistance error.

Figure 7 shows the 2-wire RTD configuration where there is no compensation for lead resistance.



$$R_x = \frac{V_8 - V_9}{V_7 - V_8} \times 1.5\text{k}\Omega - 2R_p$$

Figure 7. Configuration for 2-Wire RTD Connection

The 2-wire configuration is the lowest cost circuit and is suitable for less critical applications, short RTD connections, and higher resistance RTDs such as Pt1000.

Conductivity Theory

The resistivity, ρ , of a material or liquid is defined as the resistance of a cube of the material with perfectly conductive contacts on opposite faces. The resistance, R , for other shapes can be calculated by

$$R = \rho L/A \tag{9}$$

where:

L is the distance between the contacts.

A is the area of the contacts.

Resistivity is measured in units of Ω cm. A 1Ω cm material has a resistance of 1Ω when contacted on opposite faces of a $1 \text{ cm} \times 1 \text{ cm} \times 1 \text{ cm}$ cube.

Conductance is the reciprocal of resistance, and conductivity is the reciprocal of resistivity. The unit of measurement of conductance is Siemens (S), and the unit of measurement of conductivity is S/cm, mS/cm, or μ S/cm.

All aqueous solutions conduct electricity to some degree. Adding electrolytes such as salts, acids, or bases to pure water increases the conductivity (and decreases resistivity).

For the purposes of this circuit note, Y is the general symbol for conductivity measured in S/cm, mS/cm, or μ S/cm. However, in many cases, the distance term is dropped for convenience, and the conductivity is simply expressed as S, mS, or μ S.

A conductivity system measures conductivity by means of electronics connected to a sensor called a conductivity cell immersed in a solution, as shown in Figure 8.

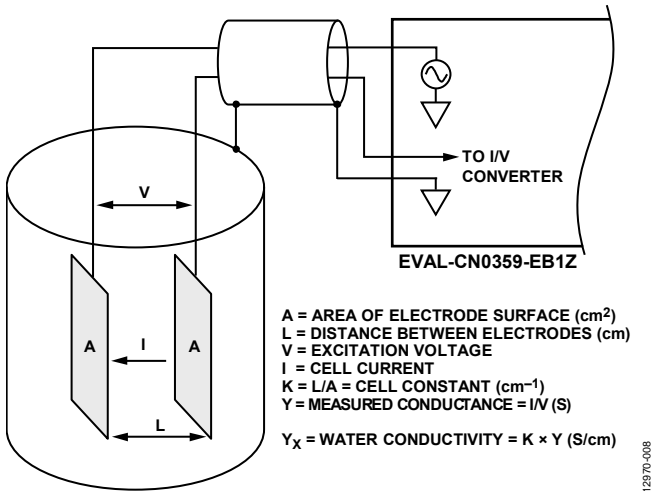


Figure 8. Interface Between Conductivity Cell and EVAL-CN0359-EB1Z

The electronic circuitry impresses an alternating voltage on the sensor and measures the size of the resulting current, which is related to the conductivity. Because conductivity has a large temperature coefficient (up to 4%/°C), an integral temperature sensor is incorporated into the circuitry to adjust the reading to a standard temperature, usually 25°C (77°F). When measuring solutions, the temperature coefficient of the conductivity of the water itself must be considered. To compensate accurately for

the temperature, a second temperature sensor and compensation network must be used.

The contacting-type sensor typically consists of two electrodes that are insulated from one another. The electrodes, typically Type 316 stainless steel, titanium palladium alloy, or graphite, are specifically sized and spaced to provide a known cell constant. Theoretically, a cell constant of 1.0/cm describes two electrodes, each sized 1 cm² in area, and spaced 1 cm apart. Cell constants must be matched to the measurement system for a given range of operation. For instance, if a sensor with a cell constant of 1.0/cm is used in pure water with a conductivity of 1 μ S/cm, the cell has a resistance of 1 M Ω . Conversely, the same cell in seawater has a resistance of 30 Ω . Because the resistance ratio is so large, it is difficult for ordinary instruments to accurately measure such extremes with only one cell constant.

When measuring the 1 μ S/cm solution, the cell is configured with large area electrodes spaced a small distance apart. For example, a cell with a cell constant of 0.01/cm results in a measured cell resistance of approximately 10,000 Ω rather than 1 M Ω . It is easier to accurately measure 10,000 Ω than 1 M Ω ; therefore, the measuring instrument can operate over the same range of cell resistance for both ultrapure water and high conductivity seawater by using cells with different cell constants.

The cell constant, K , is defined as the ratio of the distance between the electrodes, L , to the area of the electrodes, A :

$$K = L/A \tag{10}$$

The instrumentation then measures the cell conductance, Y :

$$Y = I/V \tag{11}$$

The conductivity of the liquid, Y_x , is then calculated:

$$Y_x = K \times Y \tag{12}$$

There are two types of conductivity cells: those with two electrodes, and those with four electrodes, as shown in Figure 9. The electrodes are often referred to as poles.

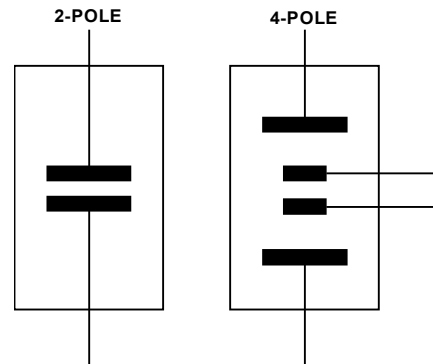


Figure 9. 2-Pole and 4-Pole Conductivity Cells

The 2-pole sensor is more suitable for low conductivity measurements, such as purified water, and various biological and pharmaceutical liquids. The 4-pole sensor is more suitable for the high conductivity measurements, such as waste water and seawater analysis.

The cell constants for 2-pole cells range from approximately 0.1/cm to 1/cm, and the cell constants for 4-pole cells range from 1/cm to 10/cm.

The 4-pole cell eliminates the errors introduced by polarization of the electrodes and field effects that can interfere with the measurement.

The actual configuration of the electrodes can be that of parallel rings, coaxial conductors, or others, rather than the simple parallel plates shown in Figure 8.

Regardless of the type of cell, it is important not to apply a dc voltage to any electrode, because ions in the liquid will accumulate on the electrode surface, thereby causing polarization, measurement errors, and damage to the electrode.

Take special care with sensors that have shields, as in the case of coaxial sensors. The shield must be connected to the same potential as the metal container holding the liquid. If the container is grounded, the shield must be connected to Pin 5 of J5, the circuit board ground.

The final precaution is not to exceed the rated excitation voltage or current for the cell. The CN-0359 circuit allows programmable excitation voltages from 100 mV to 10 V, and the R23 (1 k Ω) series resistor limits the maximum cell current to 10 mA.

Power Supply Circuits

To simplify system requirements, all the required voltages (± 15 V and +3.3 V) are generated from a single 4 V to 7 V supply, as shown in Figure 10.

The ADP2300 buck regulator generates the 3.3 V supply for the board. The design is based on the downloadable [ADP230x Buck Regulator Design Tool](#).

The ADP1613 boost regulator generates a regulated +15 V supply and an unregulated -15 V supply. The -15 V supply is generated with a charge pump. The design is based on the [ADP161x Boost Regulator Design Tool](#).

Details regarding the selection and design of power supplies are available at www.analog.com/ADIsimPower.

Use proper layout and grounding techniques to prevent the switching regulator noise from coupling into the analog circuits. See the [Linear Circuit Design Handbook](#), the [Data Conversion Handbook](#), the [MT-031 Tutorial](#), and the [MT-101 Tutorial](#) for further details.

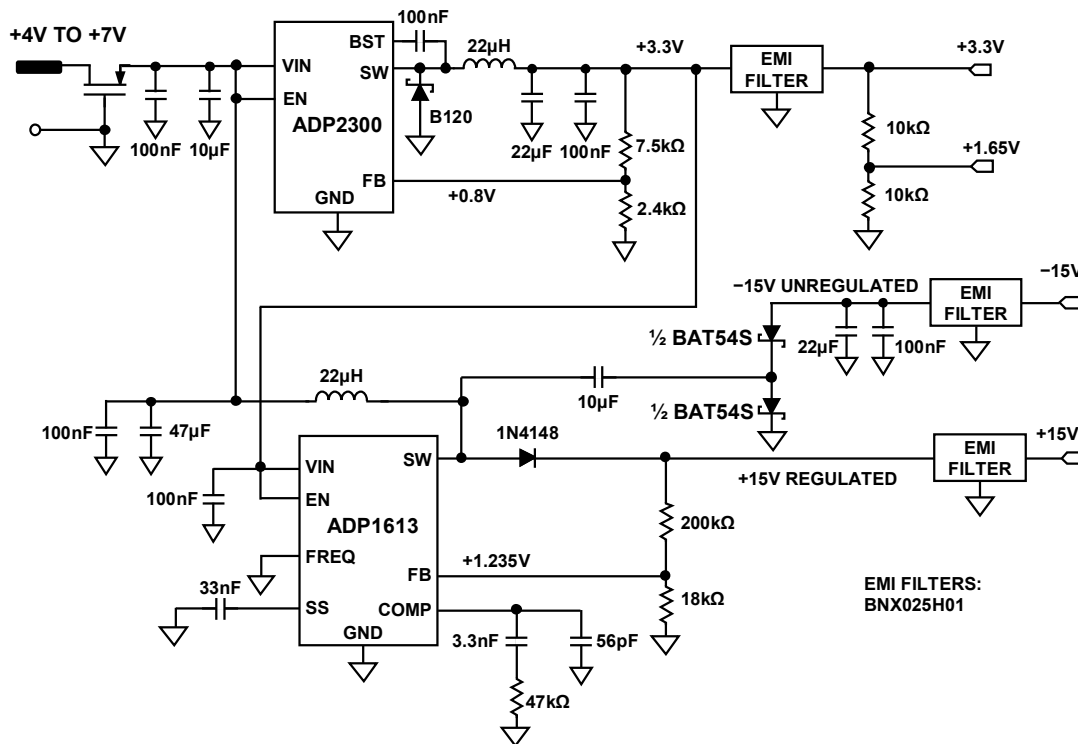


Figure 10. Power Supply Circuits

12870-010

Figure 11 shows the LCD backlight driver circuit.

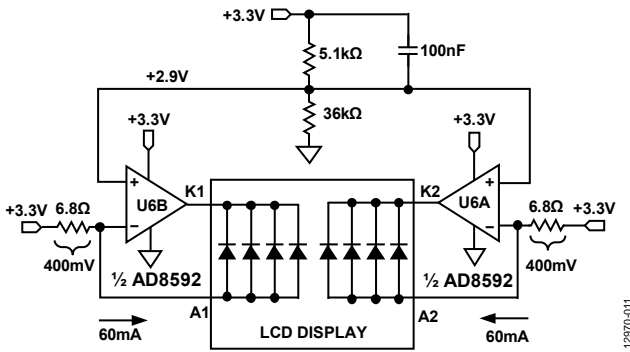


Figure 11. LCD Backlight Drivers

Each half of the AD8592 op amp acts as a 60 mA current source to supply the LCD backlight currents. The AD8592 can source and sink up to 250 mA, and the 100 nF capacitor ensures a soft startup.

Software Operation and User Interface

The EVAL-CN0359-EB1Z comes preloaded with the code required to make the conductivity measurements. The complete system hardware and software operation can be found in the CN-0359 User Guide at www.analog.com/CN0359-UserGuide.

The CN-0359 user interface is intuitive and easy to use. All user inputs are from a dual function push button/rotary encoder knob. The encoder knob can be turned clockwise or counterclockwise (no mechanical stop), and can also be used as a push button.

Figure 12 is a photo of the EVAL-CN0359-EB1Z board that shows the LCD display and the position of the encoder knob.

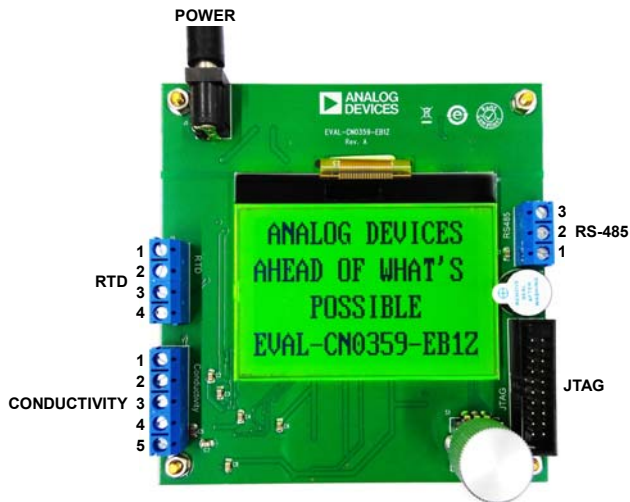


Figure 12. Photo of EVAL-CN0359-EB1Z Board Showing Home Screen in Measurement Mode

After connecting, the conductivity cell and the RTD the board are powered up. The LCD screen appears as shown in Figure 12.

Push the encoder knob to enter the setting menu, and then input the EXC Voltage, EXC Frequency, TEMP Coefficient, and Cell Constant, as shown in Figure 13.



Figure 13. LCD Display Screens

Rotating the knob moves the cursor up and down through the various parameters.

Set the cursor to EXC Voltage and push the knob until it clicks. Position the cursor over the first digit in the number to be set by rotating the knob. Push the button, and the cursor blinks. Change the number by rotating the knob, and push the knob when the desired number is reached. After setting all the digits in the number, position the cursor on Save and push the button to save the setting.

Continue the process and set the EXC Frequency, TEMP Coefficient, and Cell Constant.

After setting all the constants, select RETURN TO HOME and push the knob. The system is now ready to make measurements.

If numbers are entered that are outside the allowable range, the buzzer sounds.

If the conductivity cell is incorrectly connected, the screen displays **Sensor Incorrect**.

If the RTD is incorrectly connected, the screen displays **RTD Incorrect use 25°C**. The system can still make measurements without the RTD connected, but uses 25°C as the compensation temperature.

COMMON VARIATIONS

The system shown in the CN-0359 uses the ADuCM360 precision analog microcontroller for a highly integrated conductivity measurement.

If the user desires a discrete ADC, the AD7794 24-bit, Σ-Δ ADC is a good choice.

CIRCUIT EVALUATION AND TEST

This circuit uses the [EVAL-CN0359-EB1Z](#) circuit board, an external power supply, conductivity cell, and an RTD.

Equipment Needed

The following equipment is needed:

- The [EVAL-CN0359-EB1Z](#) circuit board
- A 6 V power supply or wall wart ([EVAL-CFTL-6V-PWRZ](#))
- A conductivity cell
- Pt100 or Pt1000 2-wire, 3-wire, or 4-wire RTD (if the RTD is not connected, the conductivity measurement is referenced to 25°C)

Setup

Take the following steps to set up the circuit for evaluation:

1. Connect the conductivity cell as follows:
 - a. 4-wire cell: connect an outside current electrode to J5 Pin 1 and the closest inner voltage electrode to J5 Pin 2. Connect the second outside current electrode to J5 Pin 4 and the closest inner voltage electrode to Pin 3.
 - b. 2-wire cell: connect one electrode to J5 Pin 1 and Pin 2 and connect the second electrode to J5 Pin 3 and Pin 4.
 - c. If the conductivity cell has a shield, connect it to J5 Pin 5.
2. Connect the RTD as follows (if used):
 - a. 4-wire RTD (see Figure 5): connect the positive current excitation wire to J3 Pin 1 and the positive voltage sense wire to J3 Pin 2. Connect the negative current excitation wire to J3 Pin 4 and the negative voltage sense wire to J3 Pin 3.
 - b. 3-wire RTD (see Figure 6): connect the positive current excitation wire to J3 Pin 1. Connect the negative current excitation wire to J3 Pin 4. Connect the negative voltage sense wire to J3 Pin 3.
 - c. 2-wire RTD (see Figure 7): connect one RTD wire to J3 Pin 1 and the other wire to J3 Pin 4.
 - d. If the RTD wires are shielded, connect the shield to J5 Pin 5.

3. Connect the 6 V power supply ([EVAL-CFTL-6V-PWRZ](#)) to J1 of the [EVAL-CN0359-EB1Z](#) circuit board.
4. Turn on the power by connecting the [EVAL-CFTL-6V-PWRZ](#), and then push the button on the [EVAL-CN0359-EB1Z](#) circuit board.
5. Follow the procedure previously described in the Software Operation and User Interface section and enter the following parameters: **EXC Voltage**, **EXC Frequency**, **TEMP Coefficient**, and **Cell Constant**.
6. Return to the main screen and wait for the [ADuCM360](#) to flush the buffers and display the conductivity and the temperature. If the screen shows an error and the buzzer beeps more than 20 times, check the sensor connections.

Connectivity for Prototype Development

The [EVAL-CN0359-EB1Z](#) is designed to be powered with the [EVAL-CFTL-6V-PWRZ](#) 6 V power supply. The [EVAL-CN0359-EB1Z](#) requires only the power supply and the external conductivity cell and RTD for operation.

The [EVAL-CN0359-EB1Z](#) also has an RS-485 connector, J2, that allows an external PC to interface with the board. Connector J4 is a JTAG interface for programming and debugging the [ADuCM360](#).

Figure 14 is a typical PC connection diagram showing an RS-485 to RS-232 adapter.

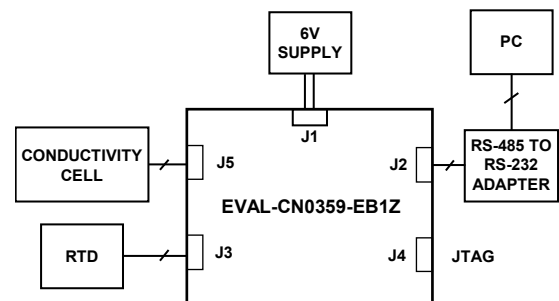


Figure 14. Test Setup Functional Diagram

12370-014

LEARN MORE

CN-0359 Design Support Package:

www.analog.com/CN0359-DesignSupport

ADIsimPower Design Tool. Analog Devices

Linear Circuit Design Handbook. Analog Devices/Elsevier.

Op Amp Applications Handbook. Analog Devices/Elsevier.

The Data Conversion Handbook. Analog Devices/Elsevier.

A Designer's Guide To Instrumentation Amplifiers, 3rd Edition.
Analog Devices.

MT-031 Tutorial. *Grounding Data Converters and Solving the Mystery of "AGND" and "DGND"*. Analog Devices.

MT-101 Tutorial. *Decoupling Techniques*. Analog Devices.

"Section 7: Temperature Sensors" in *Sensor Signal Conditioning*.
Analog Devices.

Data Sheets and Evaluation Boards

AD8253 Data Sheet

ADA4627-1 Data Sheet

ADA4000-1 Data Sheet

ADA4638-1 Data Sheet

ADA4528-2 Data Sheet

ADA4077-2 Data Sheet

AD8592 Data Sheet

AD8542 Data Sheet

ADuCM360 Data Sheet

ADP2300 Data Sheet

ADP1613 Data Sheet

ADG1211 Data Sheet

ADG1419 Data Sheet

ADM3483 Data Sheet

REVISION HISTORY

9/2016—Rev. A to Rev. B

Change to Evaluation and Design Support Section.....1

Changes to Figure 3.....3

Changes to Software Operation and User Interface Section and
Figure 12.....8

11/2015—Rev. 0 to Rev. A

Change to Setup Section.....9

1/2015—Revision 0: Initial Version

(Continued from first page) Circuits from the Lab reference designs are intended only for use with Analog Devices products and are the intellectual property of Analog Devices or its licensors. While you may use the Circuits from the Lab reference designs in the design of your product, no other license is granted by implication or otherwise under any patents or other intellectual property by application or use of the Circuits from the Lab reference designs. Information furnished by Analog Devices is believed to be accurate and reliable. However, Circuits from the Lab reference designs are supplied "as is" and without warranties of any kind, express, implied, or statutory including, but not limited to, any implied warranty of merchantability, noninfringement or fitness for a particular purpose and no responsibility is assumed by Analog Devices for their use, nor for any infringements of patents or other rights of third parties that may result from their use. Analog Devices reserves the right to change any Circuits from the Lab reference designs at any time without notice but is under no obligation to do so.