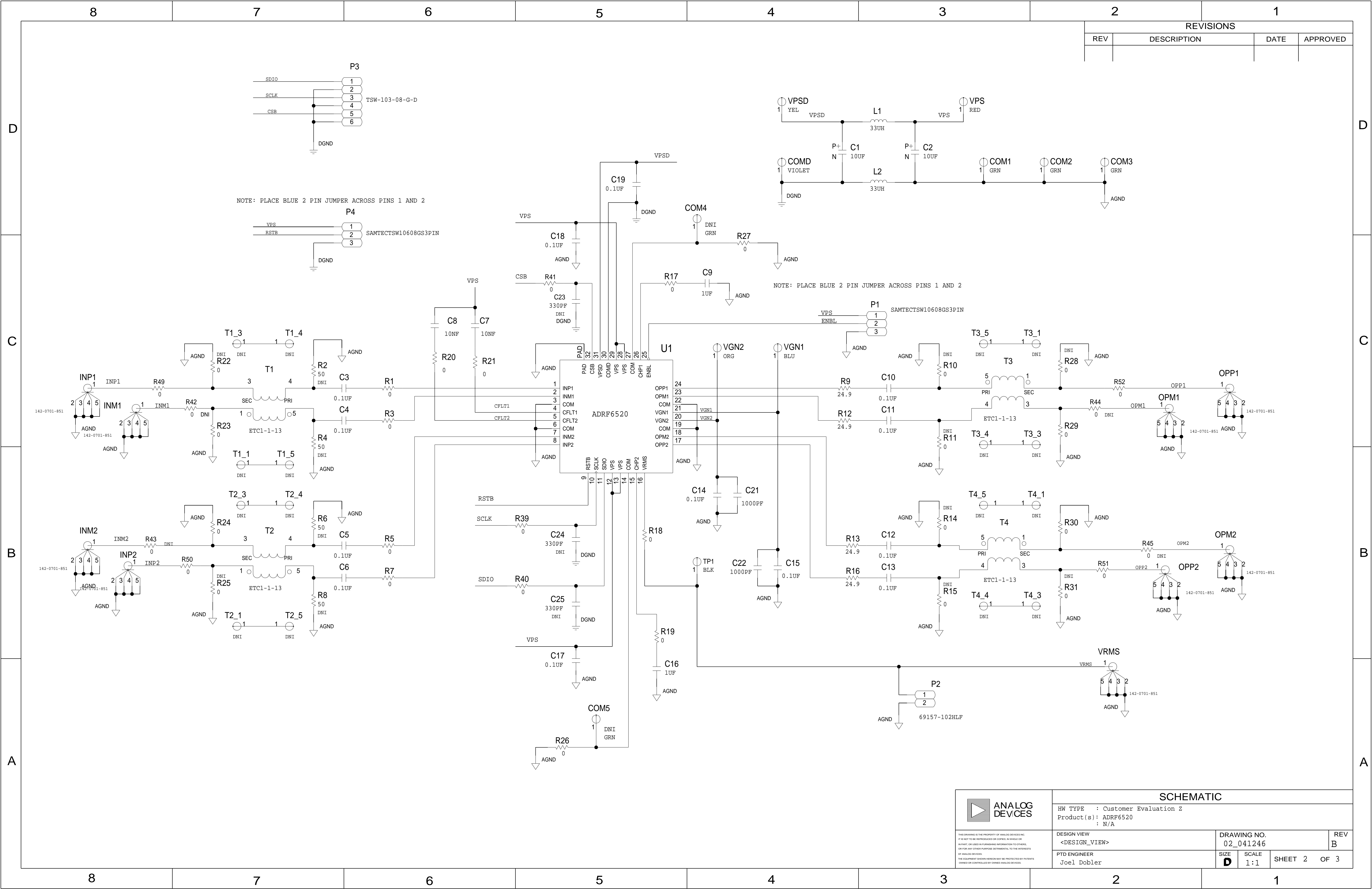


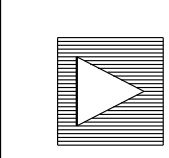
8		7		6		5		4		3		2		1																																																																																																												
D	<div>THIS DRAWING IS THE PROPERTY OF ANALOG DEVICES INC. IT IS NOT TO BE REPRODUCED OR COPIED, IN WHOLE OR IN PART, OR USED IN FURNISHING INFORMATION TO OTHERS, OR FOR ANY OTHER PURPOSE DETRIMENTAL TO THE INTERESTS OF ANALOG DEVICES. THE EQUIPMENT SHOWN HEREON MAY BE PROTECTED BY PATENTS OWNED OR CONTROLLED BY ANALOG DEVICES.</div> <div>RELAY CONTROL CHART</div> <table><thead><tr><th>CONTROL</th><th>CODE</th><th>DEVICE</th><th>FUNCTION</th><th>CONNECTOR</th></tr></thead><tbody><tr><td></td><td></td><td></td><td></td><td></td></tr><tr><td></td><td></td><td></td><td></td><td></td></tr><tr><td></td><td></td><td></td><td></td><td></td></tr><tr><td></td><td></td><td></td><td></td><td></td></tr><tr><td></td><td></td><td></td><td></td><td></td></tr><tr><td></td><td></td><td></td><td></td><td></td></tr><tr><td></td><td></td><td></td><td></td><td></td></tr><tr><td></td><td></td><td></td><td></td><td></td></tr><tr><td></td><td></td><td></td><td></td><td></td></tr><tr><td></td><td></td><td></td><td></td><td></td></tr><tr><td></td><td></td><td></td><td></td><td></td></tr><tr><td></td><td></td><td></td><td></td><td></td></tr><tr><td></td><td></td><td></td><td></td><td></td></tr></tbody></table>					CONTROL	CODE	DEVICE	FUNCTION	CONNECTOR																																																																		JUMPER TABLE <table><thead><tr><th>JP#</th><th>ON</th><th>OFF</th></tr></thead><tbody><tr><td>1</td><td></td><td></td></tr><tr><td>2</td><td></td><td></td></tr><tr><td>3</td><td></td><td></td></tr><tr><td>4</td><td></td><td></td></tr><tr><td>5</td><td></td><td></td></tr></tbody></table>			JP#	ON	OFF	1			2			3			4			5													REVISIONS <table><thead><tr><th>REV</th><th>DESCRIPTION</th><th>DATE</th><th>APPROVED</th></tr></thead><tbody><tr><td>A</td><td>INITIAL RELEASE</td><td>08/26/15</td><td>J.DOBLER</td></tr><tr><td>B</td><td>CHANGE PER ECR-063476</td><td>21JUL16</td><td>J.DOBLER</td></tr></tbody></table>				REV	DESCRIPTION	DATE	APPROVED	A	INITIAL RELEASE	08/26/15	J.DOBLER	B	CHANGE PER ECR-063476	21JUL16	J.DOBLER
						CONTROL	CODE	DEVICE	FUNCTION	CONNECTOR																																																																																																																
JP#	ON	OFF																																																																																																																								
1																																																																																																																										
2																																																																																																																										
3																																																																																																																										
4																																																																																																																										
5																																																																																																																										
REV	DESCRIPTION	DATE	APPROVED																																																																																																																							
A	INITIAL RELEASE	08/26/15	J.DOBLER																																																																																																																							
B	CHANGE PER ECR-063476	21JUL16	J.DOBLER																																																																																																																							
* SEE ASSEMBLY INSTRUCTIONS																																																																																																																										
C																																																																																																																										
B																																																																																																																										
A																																																																																																																										

TEMPLATE ENGINEER		DATE		<div>SCHEMATIC</div> <div>HW TYPE : Customer Evaluation Z</div> <div>Product(s): ADRF6520</div> <div>: N/A</div> <div>PACKAGE : 32-lead 5X5_MM LFCSP-family</div> <div>: Pitch-pitch StyleVendor Style</div> <div><User Define></div> <div><User Define></div> <div><User Define></div>										<div>ANALOG DEVICES</div>	
-															
HARDWARE SERVICES															
-															
HARDWARE SYSTEMS															
-															
TEST ENGINEER															
-															
COMPONENT ENGINEER															
-															
TEST PROCESS															
-															
HARDWARE RELEASE															
-															
DESIGNER		MASTER PROJECT TEMPLATE		TESTER TEMPLATE		DRAWING NO.						REV.			
David Corbin		TBD		no_template											
PTD ENGINEER		UNLESS OTHERWISE SPECIFIED DIMENSIONS ARE IN INCHES		TOLERANCES						02_041246				B	
Joel Dobler				DECIMALS FRACTIONS ANGLES						SIZE SCALE CODE ID NO. SHEET 1 OF 3					
CHECKER				X.XX +0.010 X.XXX +0.005						1:1 CodeID					
-															

| 8 | | 7 | | 6 | | 5 | | 4 | | 3 | | 2 | | 1 | |



REVISIONS			
REV	DESCRIPTION	DATE	APPROVED



ANALOG
DEVICES

THIS DRAWING IS THE PROPERTY OF ANALOG DEVICES INC.
IT IS NOT TO BE REPRODUCED OR COPIED IN WHOLE OR
IN PART, OR USED IN FURNISHING INFORMATION TO OTHERS,
OR FOR ANY OTHER PURPOSE DETRIMENTAL TO THE INTERESTS
OF ANALOG DEVICES.
THE EQUIPMENT SHOWN HEREON MAY BE PROTECTED BY PATENTS
OWNED OR CONTROLLED BY ANALOG DEVICES.

SCHEMATIC			
HW TYPE : Customer Evaluation Z			
Product(s) : ADRF6520			
: N/A			
DESIGN VIEW	DRAWING NO.		REV
<DESIGN_VIEW>	02_041246		B
PTD ENGINEER	SIZE	SCALE	SHEET 2 OF 3
Joel Dobler	D	1:1	

