

6

5

4

3

2

1

Single-Cell Li-ion Battery Testing Module

Version A

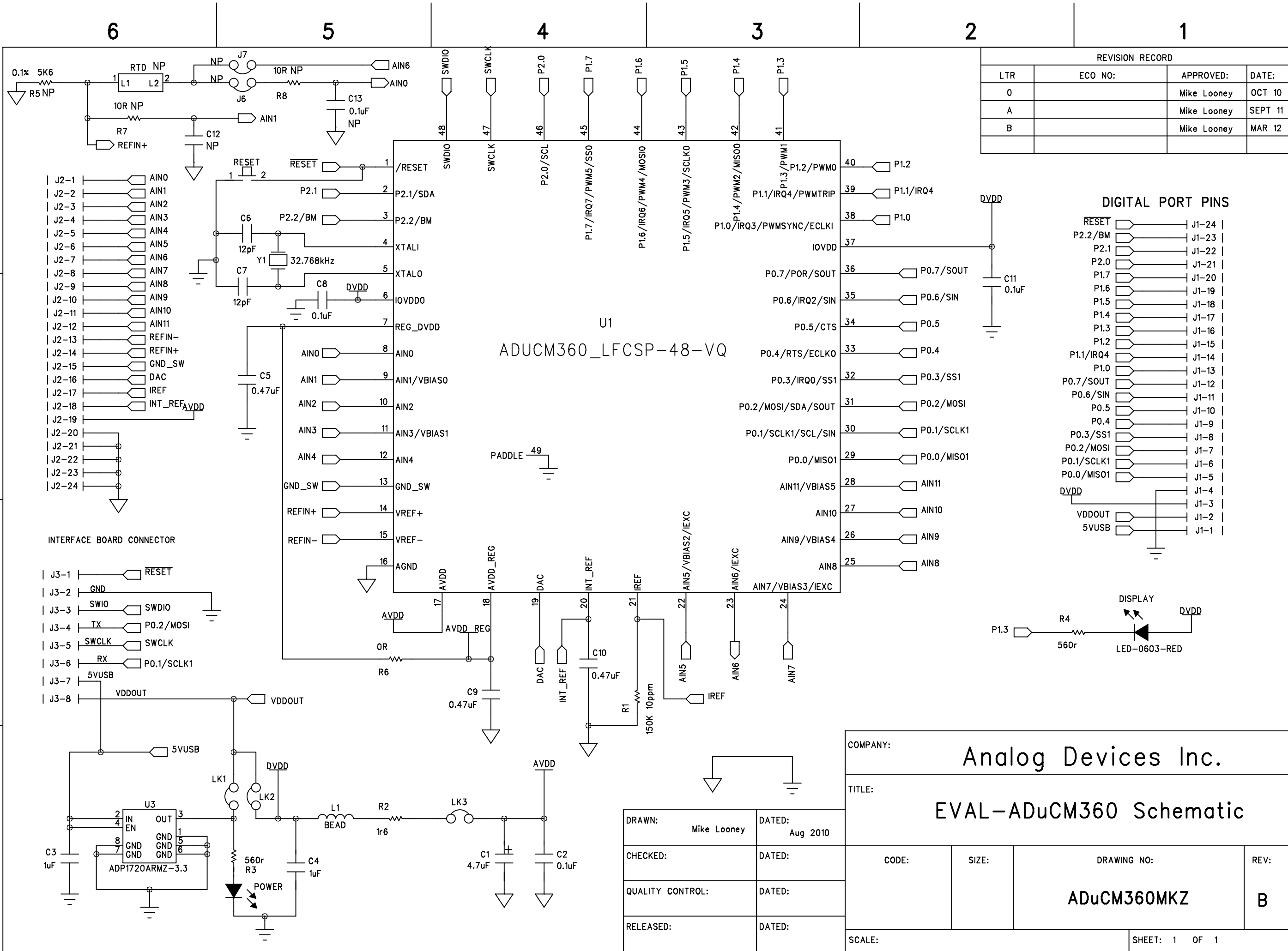
PCB Number : EVAL-CN0352-EB1Z-MCU

REVISION RECORD			
LTR	ECO NO:	APPROVED:	DATE:

COMPANY: Analog Devices Inc

TITLE: EVAL-CN0352-EB1Z-MCU

DRAWN: Willie Yue	DATED: 2013/12/9	CODE:	SIZE:	DRAWING NO:	REV:
CHECKED: <Checked By>	DATED: <Checked Date>	<Code>	A3	<Drawing Number>	A
QUALITY CONTROL: <QC By>	DATED: <QC Date>	SCALE: <Scale>		SHEET: 1 OF 4	
RELEASED: <Released By>	DATED: <Release Date>				



6

5

4

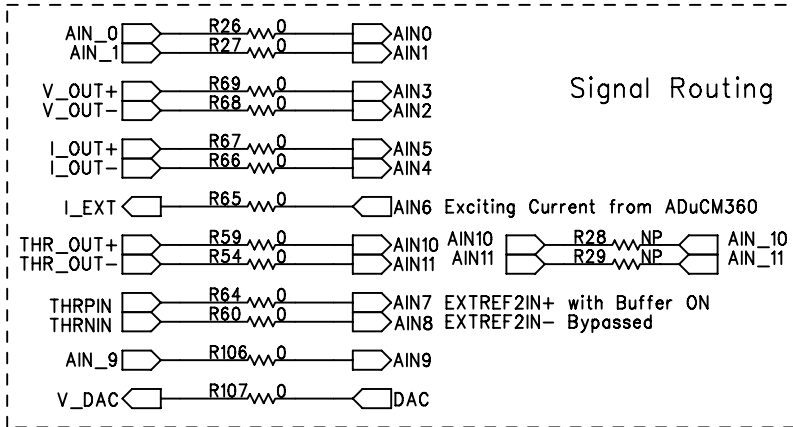
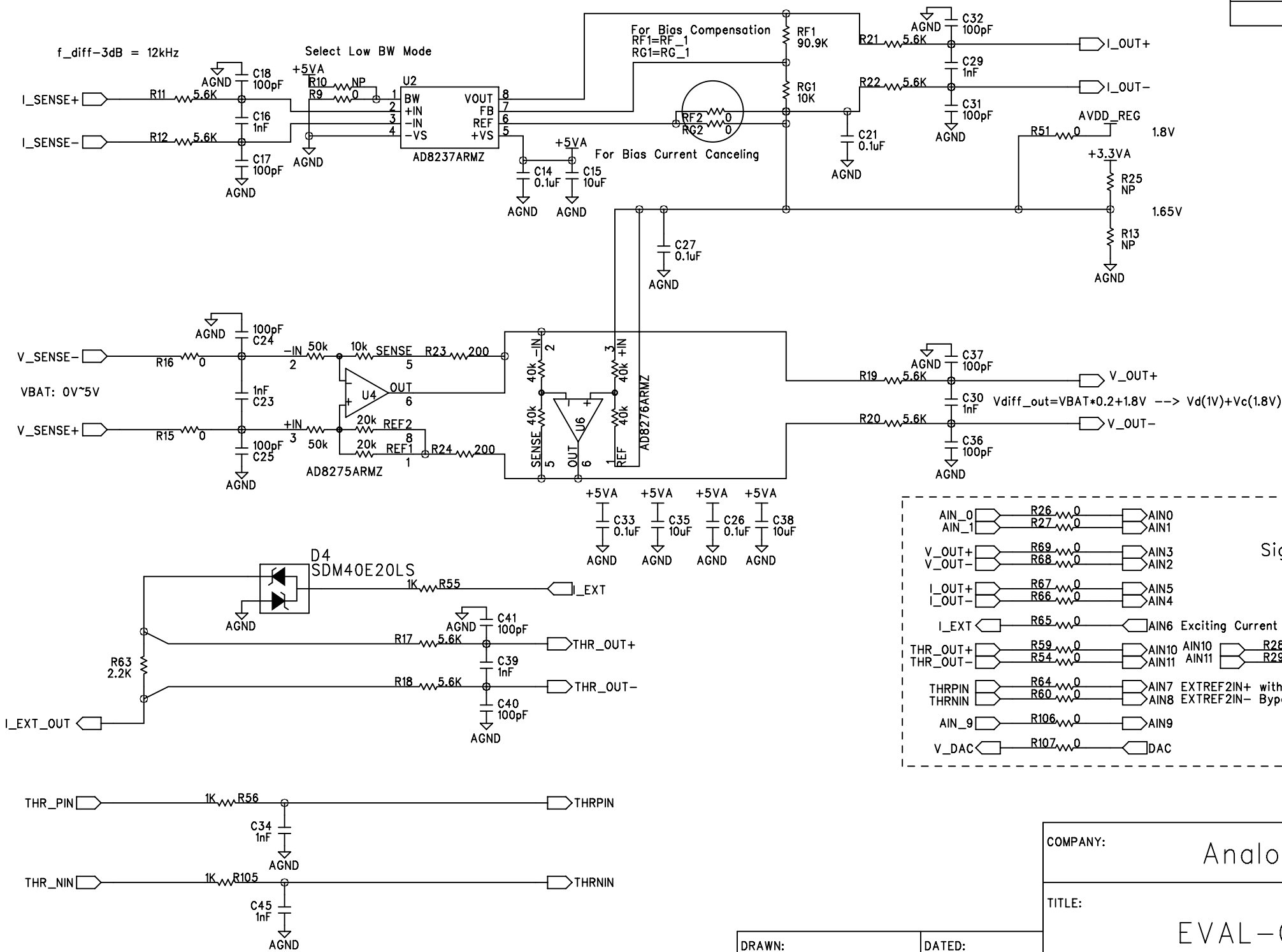
3

2

1

REVISION RECORD			
LTR	ECO NO:	APPROVED:	DATE:

Here the RFI is used to reduce the clock feedthrough from AD8273 CLK signal(27KHz)



COMPANY: Analog Devices Inc			
TITLE: EVAL-CN0352-EB1Z-MCU			
DRAWN: Willie Yue	DATED: 2013/12/9	CODE: <Code>	
CHECKED: <Checked By>	DATED: <Checked Date>	SIZE: A3	DRAWING NO: <Drawing Number>
QUALITY CONTROL: <QC By>	DATED: <QC Date>	REV: A	
RELEASED: <Released By>	DATED: <Release Date>	SHEET: 3 of 4	

DRAWN: Willie Yue	DATED: 2013/12/9
CHECKED: <Checked By>	DATED: <Checked Date>
QUALITY CONTROL: <QC By>	DATED: <QC Date>
RELEASED: <Released By>	DATED: <Release Date>

6

5

4

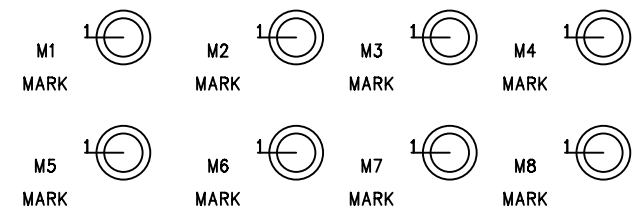
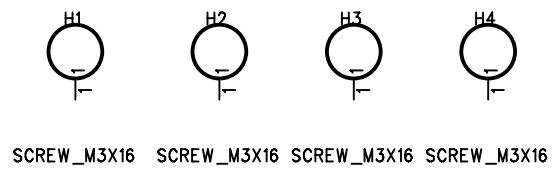
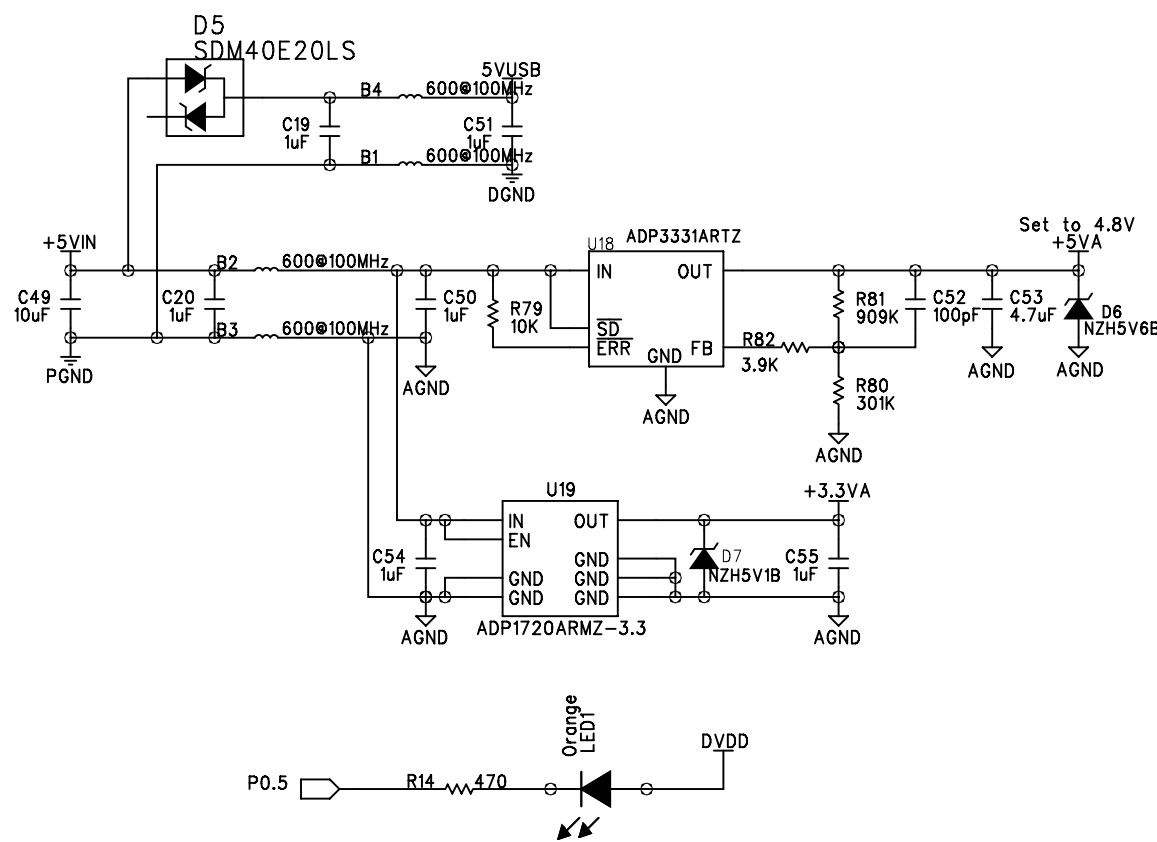
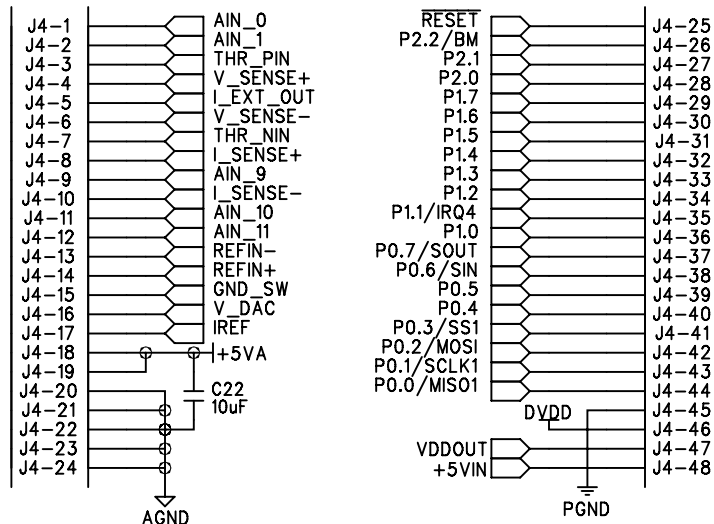
3

2

1

REVISION RECORD

LTR	ECO NO:	APPROVED:	DATE:



COMPANY: Analog Devices Inc			
TITLE: EVAL-CN0352-EB1Z-MCU			
DRAWN: Willie Yue	DATED: 2013/12/9	CODE: <Code>	
CHECKED: <Checked By>	DATED: <Checked Date>	SIZE: A3	DRAWING NO: <Drawing Number>
QUALITY CONTROL: <QC By>	DATED: <QC Date>	REV: A	
RELEASED: <Released By>	DATED: <Release Date>	SHEET: 4 OF 4	