

### Devices Connected/Referenced

ADuCRF101

Precision Analog Microcontroller with RF Transceiver, ARM Cortex™-M3

## A Battery Powered Wireless Wind Speed and Wind Direction Data Acquisition System

### EVALUATION AND DESIGN SUPPORT

#### Circuit Evaluation Boards

[ADuCRF101 Quick Start Kit \(EV-ADuCRF101QS3Z\)](#),

contains an [EV-ADuCRF101MK3Z Circuit Evaluation Board](#) and a [USB-SWD/UART-EMUZ J-Link Lite Emulator Board](#)

#### Design and Integration Files

[Schematics](#), [Layout Files](#), [Bill of Materials](#)

### CIRCUIT FUNCTION AND BENEFITS

The circuit in Figure 1 is a battery powered precision analog microcontroller circuit with an integrated RF ISM-band transceiver used to transmit wind speed and wind direction from a passive anemometer. In the application shown, the on-chip 12-bit analog-to-digital converter (ADC) and the wake-up timers are used to acquire the wind direction and speed, respectively. The low power hibernate mode is used to conserve power, which is important in wireless remote sensing applications. When in hibernation mode, the ADuCRF101 nominally consumes 1.9  $\mu$ A of supply current, resulting in long battery life. A single CR2032 lithium ion battery can last 1 year to 2 years when operated in this mode.

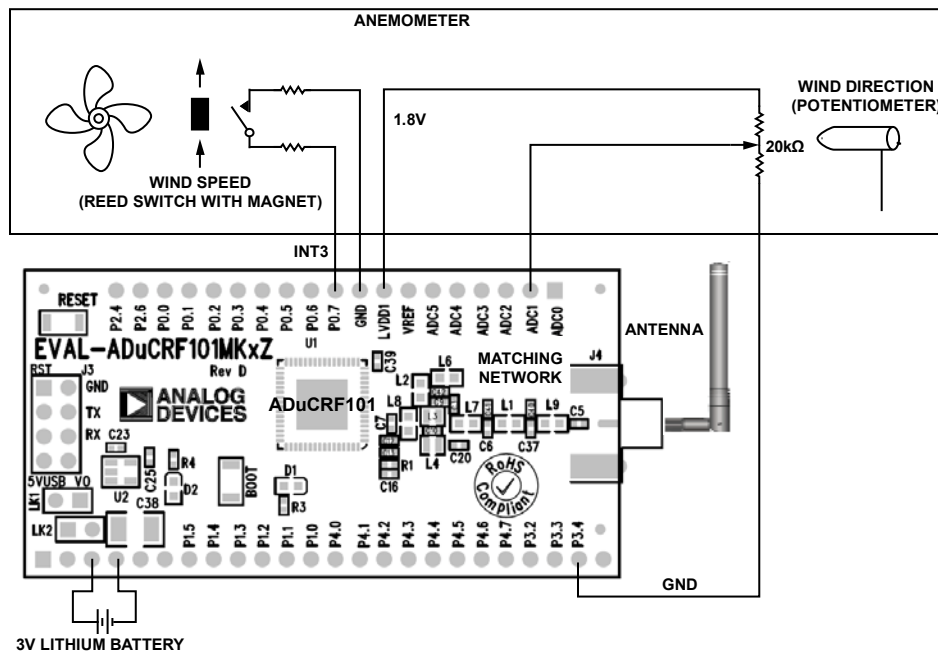


Figure 1. Wireless Wind Speed and Direction Data Acquisition System Functional Block Diagram (Simplified Diagram: All Connections and Decoupling Not Shown)

#### Rev. A

Circuits from the Lab™ circuits from Analog Devices have been designed and built by Analog Devices engineers. Standard engineering practices have been employed in the design and construction of each circuit, and their function and performance have been tested and verified in a lab environment at room temperature. However, you are solely responsible for testing the circuit and determining its suitability and applicability for your use and application. Accordingly, in no event shall Analog Devices be liable for direct, indirect, special, incidental, consequential or punitive damages due to any cause whatsoever connected to the use of any Circuits from the Lab circuits. (Continued on last page)

The [ADuCRF101](#) offers a fully integrated solution for this data acquisition application designed for low power wireless applications. The [ADuCRF101](#) features a 12-bit ADC, a low power Cortex™-M3 core from ARM®, a 431 MHz to 464 MHz and 862 MHz to 928 MHz RF ISM-band transceiver, and Flash/EE memory. This wireless data acquisition system is designed to operate in battery-powered applications where low power is critical. The device can be configured in normal operating mode or various low power sleep modes under direct program control. In flexi mode, any peripheral can operate and wake up the device, and in hibernate mode, the internal wake-up timer remains active. While in shutdown mode, only an external interrupt can wake up the device.

In the application shown in Figure 1, the 12-bit ADC and the wake-up timers are used to acquire the wind direction and speed, respectively. To conserve power, the low power hibernate mode is used. When in hibernate mode, the [ADuCRF101](#) nominally consumes 1.9  $\mu$ A of supply current, resulting in long battery life. The functionality of the [ADuCRF101](#) and its small 9 mm  $\times$  9 mm package size makes it a very easy-to-use and cost-effective solution in this and other wireless data acquisition applications.

## CIRCUIT DESCRIPTION

The circuit in Figure 1 contains an [EV-ADuCRF101MK3Z](#) evaluation board which includes the [ADuCRF101](#), a fully integrated wireless data acquisition solution. The function of the [ADuCRF101](#) is to collect wind speed and direction information from an anemometer, and to transmit this information wirelessly to another [ADuCRF101](#) that is in receive mode.

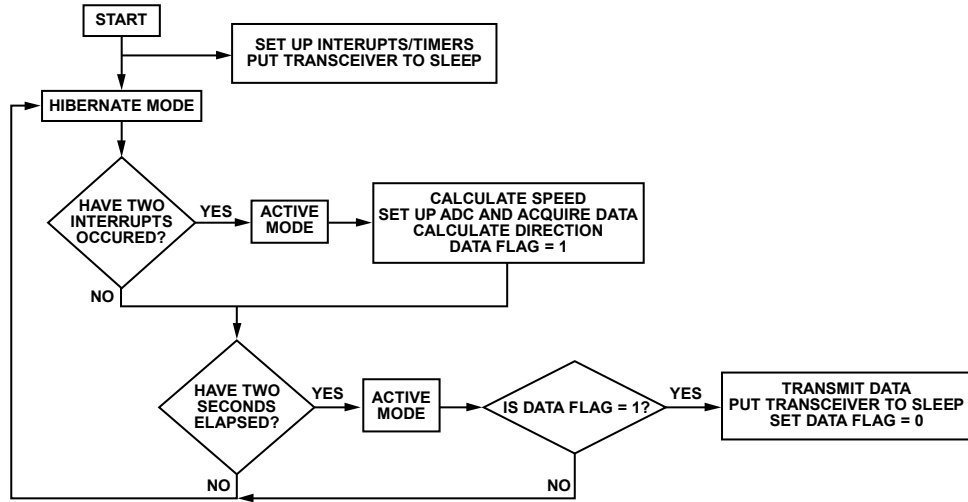
The [EV-ADuCRF101MK3Z](#) has been optimized for use in the 431 MHz to 464 MHz ISM band. This evaluation board allows easy access to the [ADuCRF101](#) via through-holes on the edge of the board. More information on the [EV-ADuCRF101MK3Z](#) is available in the [UG-231 User Guide](#). In this application, the evaluation board is interfaced to an anemometer. The anemometer can be connected via cables or through an adapter board (see Figure 1). A 3 V lithium CR2032 battery is used to power the evaluation board.

The wind speed section of a typical passive anemometer is made of a reed switch that is toggled on and off as a magnet passes over it. The magnet is attached to the bearing of the

anemometer's fan; therefore, as the wind spins the fan, the magnet periodically moves past the switch toggling it each time. The switch is connected between the GND pin and P0.7 of the printed circuit board (PCB). A single revolution of the fan toggles the switch once and thus generates a pulse on P0.7 that is used as an interrupt signal. In this example, P0.7 is assigned IRQ3. The time between two pulses is used to calculate the wind speed. The 32-bit wake-up timer is used. This timer uses the 32 kHz LFOSC clock internal to the [ADuCRF101](#) and a prescaler divisor of 1. The primary reason for using the wake-up timer is because it is active during hibernate mode while the general-purpose timers are not. Therefore, the interrupt timing is continuous even when the device is in a low power sleep mode.

The wind direction section of a passive anemometer is typically made of a potentiometer connected to a wind vane. As the direction of the wind vane changes so does the value of the potentiometer. The wiper of the potentiometer is connected to the ADC1 pin, and the other two connections of the potentiometer go to the low voltage 1.8 V LDO LVDD1 pin and the P3.4 pin. Connecting to the P3.4 pin instead of directly to ground enables the option for P3.4 to be either grounded (through an internal switch) or completely disconnected. Disconnecting P3.4 from ground after an ADC conversion reduces current consumption. Connecting and disconnecting P3.4 from ground is software driven. See the ADC Circuit section in the [UG-231 User Guide](#) for more details on this configuration.

Figure 2 shows a flow chart of the software controlling the data acquisition system. After the interrupt and timer setup stage, the [ADuCRF101](#) is switched to hibernate mode. After two wind speed interrupts are received, the [ADuCRF101](#) enters flexi mode, and the Cortex-M3 becomes active. The wind speed is calculated from the wake-up timer values. Next, the ADC is configured, and the wind direction calculated. Subsequently, the [ADuCRF101](#) is put back into low power hibernate mode. When 10 seconds pass and two wind speed interrupts have occurred, the [ADuCRF101](#) wakes up in flexi mode. The transceiver is woken up and transmits the speed and direction data. Immediately after transmission, it is put back to sleep. Finally, the [ADuCRF101](#) returns to hibernate mode. For this circuit, the transmitter is set up to transmit at the maximum speed of 300 kbps with a frequency deviation of 75 kHz. To conserve power, use the highest transmit data rate.



NOTES  
1. THE WAKE-UP TIMER IS USED AS IT IS STILL ACTIVE IN HIBERNATE MODE.

Figure 2. Wireless Data Acquisition Software Flow Chart

11032-002

Figure 3 shows the power consumption vs. time of a single data transmission sequence. In this circuit, the differential power amplifier (PA) was used at maximum power (10 dBm). The frequency of operation was set to 433 MHz. At 10 dBm output power, the PA consumed in the order of 21 mA.

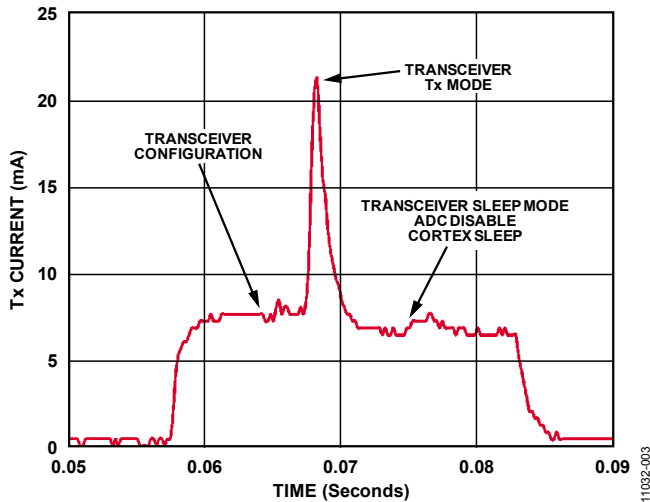


Figure 3. Wireless Data Acquisition System Power Consumption for One Transmission Sequence

11032-003

The amount of time the transceiver transmits at maximum power is minimized by using the maximum ADuCRF101 data transmission rate of 300 kbps. The power consumption can be reduced further by reducing the output power of the PA. The optimal PA output power depends on the transmission distance required in the application. From Figure 3, the average power used in a single transmission sequence in one 10 second period is 22  $\mu$ A. This translates into a CR2032 lithium battery lifetime of approximately 1.2 years. In reality, the lifetime of the battery can be longer because this example assumes a transmission occurs every 10 seconds and does not take into account the case where there is no wind and thus no transmissions.

### COMMON VARIATIONS

The frequency of data transmission can be changed to any value, for example, every minute instead of every 10 seconds. This has a large effect on the overall power consumption. Another parameter that can be varied is the data rate at which the data is transmitted. Normally, 300 kbps is used, but 38.4 kbps and 1 kbps are alternatives. The advantage of using a lower data rate is increased transmission distance for the same output power. The disadvantage is that it takes longer to transmit and thus increases overall power consumption. If a different frequency is needed, the EV-ADuCRF101MK1Z board can be used. This alternative evaluation board can be programmed to operate anywhere in the 862 MHz to 928 MHz band.

Other alternative devices that can be used in this application are the ADF7023 UHF transceiver with a microcontroller. Used together, these provide the same functionality of the ADuCRF101; however, they add complexity.

### CIRCUIT EVALUATION AND TEST

#### Equipment Needed

The following equipment is needed:

- Two of each: EV-ADuCRF101MK3Z evaluation boards, 433 MHz antenna, and software.
- The USB-SWD/UART-EMUZ converter board with the J-Link Lite emulator included. This board is available as part of the EV-ADuCRF101QS3Z Quick Start Kit.
- A passive anemometer (for example, from Davis Instruments).
- A PC (Windows® 32-bit or 64-bit).

## Setup

To set up the circuit, do the following:

1. Connect the anemometer to the [EV-ADuCRF101MK3Z](#) evaluation board. Make the connections in accordance with Figure 1. It can be connected directly using cables to the edge vias on the evaluation board or through a mother board on which the evaluation board is mounted.
2. The [EV-ADuCRF101MK3Z](#) then collects and transmits the anemometer data (Tx board).
3. The [USB-SWD/UART-EMUZ](#) board is then connected to the Tx board to enable code to be downloaded to the device. The code is contained on the DVD that comes with the evaluation board kit. Download the `anemometer_transmit.c` code to the device. The download is done via the J-Link Lite emulator. See the evaluation board user guide for details on how to download code to the device from the DVD. This code sets up P0.7 as an interrupt, sets up the ADC1 channel, and executes as outlined in Figure 2.
4. Connect the [USB-SWD/UART-EMUZ](#) to the second [EV-ADuCRF101MK3Z](#) to download the `anemometer_receive.c` code. This code sets up the evaluation board [EV-ADuCRF101MK3Z](#) in receiver mode (Rx evaluation board) and outputs the wind speed and direction data when received on the UART.
5. The graphic user interface (GUI) of the Rx board can be installed on the PC to view the wind speed and direction data. Execute the `anemometer_Demo.exe` file to install the GUI, proceed through any dialog boxes that appear to finish the installation.

As shown in the flow chart in Figure 2, the Tx board transmits data every 10 seconds when available. If there are no interrupt incidents on P0.7 (that is, no wind), there is no transmission. The Rx board immediately receives that data and outputs it via the UART-to-USB converter board to the GUI running on the PC.

## Functional Block Diagram

A function diagram of the test setup is shown in Figure 4.

## Test

The COM port and baud rate of the connection from the GUI to the receiver board needs to be set. The baud rate is fixed to 19,200 kbps, and the COM port number has to set correctly to the one being used by the USB cable. The GUI continually updates as new data arrives; it currently does not auto zero when no data arrives for an extended period of time. Note that to minimize power consumption on the Tx board, remove LK1, which turns off the red LED and thus reduces power consumption.

The [UG-480 User Guide](#) provides a detailed description of how to use, program, debug, and evaluate the [ADuCRF101](#) evaluation board. The user guide describes all the features of the board, including the interface method. It also contains a complete bill of materials (BOM) and a schematic for the board.

The [UG-231 User Guide](#) is a comprehensive reference document on the functionality and features of the [ADuCRF101](#). This user guide explains in detail how to configure and use all the features of the device, including the features used in this application (that is, timers, hibernate mode, ADC, interrupts, and transceiver operation).

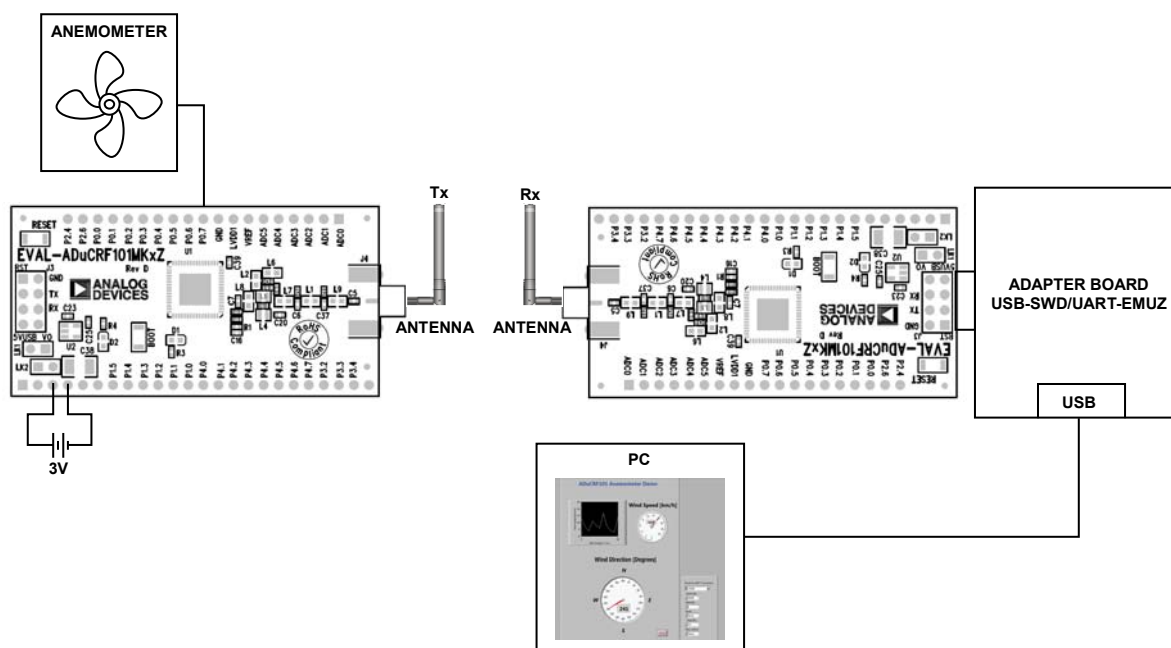


Figure 4. Evaluation and Test Setup

11032-004

**LEARN MORE**

CN0298 Design Support Package:  
[www.analog.com/CN0298-DesignSupport](http://www.analog.com/CN0298-DesignSupport)

User Guide UG-231 for the ADuCRF101

User Guide UG-480 for the ADuCRF101 Evaluation Board

**Data Sheets and Evaluation Boards**

ADuCRF101 Data Sheet

ADuCRF101 Quick Start Kit (862 MHz to 928 MHz band):  
EV-ADuCRF101QS1Z

ADuCRF101 Quick Start Kit (431 MHz to 464 MHz band):  
EV-ADuCRF101QS3Z

ADuCRF101 Evaluation Board (862 MHz to 928 MHz band):  
EV-ADuCRF101MK1Z

ADuCRF101 Evaluation Board (431 MHz to 464 MHz band):  
EV-ADuCRF101MK3Z

**REVISION HISTORY**

2/15—Rev. 0 to Rev. A  
Changes to Circuit Function and Benefits Section..... 1

12/14—Revision 0: Initial Version

(Continued from first page) Circuits from the Lab reference designs are intended only for use with Analog Devices products and are the intellectual property of Analog Devices or its licensors. While you may use the Circuits from the Lab reference designs in the design of your product, no other license is granted by implication or otherwise under any patents or other intellectual property by application or use of the Circuits from the Lab reference designs. Information furnished by Analog Devices is believed to be accurate and reliable. However, Circuits from the Lab reference designs are supplied "as is" and without warranties of any kind, express, implied, or statutory including, but not limited to, any implied warranty of merchantability, noninfringement or fitness for a particular purpose and no responsibility is assumed by Analog Devices for their use, nor for any infringements of patents or other rights of third parties that may result from their use. Analog Devices reserves the right to change any Circuits from the Lab reference designs at any time without notice but is under no obligation to do so.

©2014–2015 Analog Devices, Inc. All rights reserved. Trademarks and registered trademarks are the property of their respective owners.  
CN11032-0-2/15(A)

