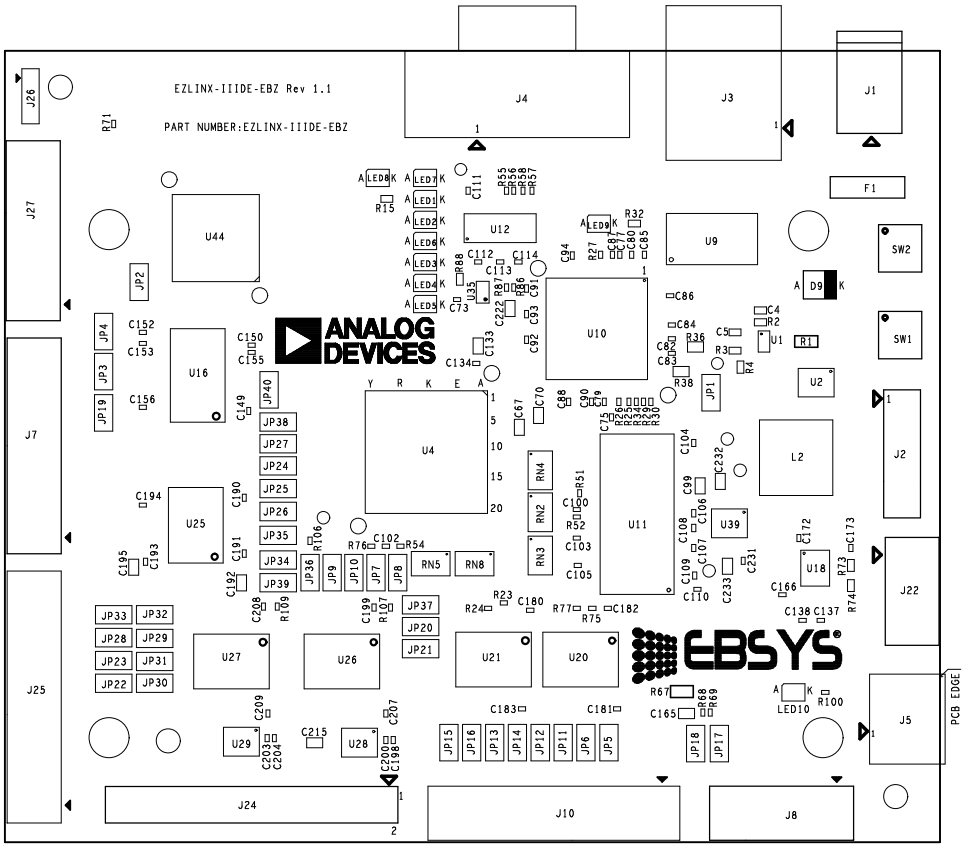



REVISIONS				
REV	DESCRIPTION OF CHANGE	DRFTR	DATE	APPROVED
1.0	NEW RELEASE	VVDN	04/12/12	
1.1	RFO_3.1 CAD Services- Changes updated	VVDN	10/15/12	

- NOTES:
- UNLESS OTHERWISE SPECIFIED.
- CAUTION :
- COMPONENTS ARE SUBJECT TO DAMAGE BY STATIC ELECTRICITY.
- 1) SOLDER AND ASSEMBLE AS PER INDUSTRY WORKMANSHIP STANDARDS.
- 2) LABELS SHALL NOT TO BE PLACED OVER EXPOSED COPPER AND METAL.
- 3) SOLDER PASTE TOOLING SHOULD BE MADE USING \*\_SPT.ART FOR PRIMARY SIDE.
- 4) SOLDER PASTE TOOLING SHOULD BE MADE USING \*\_SPB.ART FOR SECONDARY SIDE.
- 5) APERTURES MAY BE MODIFIED TO BEST FIT ADI REQUIREMENT.
- 6) ASSEMBLY SHALL BE ELCECTRICALLY TESTED.
- 7) STICK TO THE BACKING REQUIREMENT AS PER CLASS RECOMMENEDATION.
- 8) 'FIDUCIAL'S WILL NOT BE THRU OPEN, IT SHOULD BE HALFETCH".



UNLESS OTHERWISE SPECIFIED DIMENSIONS ARE IN INCHES TOLERANCES ARE : .XX +/- .010 .XXX +/- .005	CONTRACT NO.		 20 Cotton Road Nashua, New Hampshire 03063 (603) 883-2430 FAX (603) 882-2655	
	APPROVALS	DATE		
MATERIAL	DRAWN VVDN	10/15/12	ASSEMBLY DRAWING TOP SIDE EZLINX-IIIDE-EBZ	
FINISH	CHECKED			
DO NOT SCALE THIS DRAWING	ENGINEERING		SIZE B	DWG. NO. ASSMAA0001-2012-REF
	QUALITY			
	MANUFACTURING		SCALE 1 : 1	SHEET 1 : 2