

Evaluating the **ADuM7702** 16-Bit, Isolated, Sigma-Delta Modulator

FEATURES

Fully featured evaluation board for the **ADuM7702**

On-board power supplies

Standalone capability

SDP-H1 controller board compatible

PC-based software for control and data analysis

EVALUATION KIT CONTENTS

EV-ADuM7702-8FMCZ evaluation board

ACE software download instructions

EQUIPMENT NEEDED

EVAL-SDP-CH1Z (SDP-H1) controller board

USB cable (provided in **SDP-H1** kit)

12 V wall wart signal source (provided in **SDP-H1** kit)

PC running Windows Vista SP2 (32-bit or 64-bit), Windows 7

SP1 (32-bit or 64-bit), Windows 8.1 (32-bit or 64-bit), or

Windows 10 (32-bit or 64-bit) with a USB 2.0 port

DOCUMENTS NEEDED

ADuM7702 data sheet

SOFTWARE NEEDED

ACE software

ADuM7702 ACE plugin (provided in **ACE** software)

GENERAL DESCRIPTION

The EV-ADuM7702-8FMCZ is a fully featured evaluation board that allows the user to evaluate all features of the **ADuM7702** isolated analog-to-digital converter (ADC). The **EVAL-SDP-CH1Z (SDP-H1)** high speed system demonstration platform (SDP) controller board controls the EV-ADuM7702-8FMCZ via the J9 connector and through the USB port of a PC using the [analysis, control, evaluation \(ACE\)](#) software. The ACE software is available to download on the [ACE](#) software page.

On-board components include an isolated, 5 kV, *isoPower*[®] dc-to-dc converter (the **ADuM6000**), a 50 mA, 60 V, high efficiency buck regulator (the **ADP2360ACPZ-5.0**), and a 5 V, low noise, low dropout (LDO) regulator (the **ADP7104ARDZ-5.0**).

This user guide explains how to use the EV-ADuM7702-8FMCZ to evaluate the **ADuM7702**. The **ADuM7702** is a high performance, second-order, Σ - Δ modulator that converts an analog input signal into a high speed, single-bit data stream with on-chip digital isolation based on Analog Devices, Inc., *iCoupler*[®] technology. The device is powered by a 4.5 V to 5.5 V power supply (V_{DD1}) and accepts a pseudo differential input signal of up to ± 50 mV (± 64 mV at full scale). The pseudo differential input shunts voltage monitoring in high voltage applications where galvanic isolation is required.

The analog input is continuously sampled by a high performance analog modulator and converts to a ones density digital output stream with a data rate of up to 21 MHz. The original information can be reconstructed with the appropriate digital filter to achieve an 82 dB signal-to-noise ratio (SNR) at 78.1 kSPS with a 20 MHz MCLKIN frequency (f_{MCLKIN}) for the **ADuM7702**. The serial input and output is powered by a supply of either 5 V or 3.3 V (V_{DD2}).

The serial interface is digitally isolated. The on-chip isolation provides performance characteristics superior to alternatives, such as optocoupler devices, due to high speed CMOS technology combined with monolithic transformer technology. The **ADuM7702** comes in both 16-lead and 8-lead, wide-body SOIC packages, and the device has an operating temperature range of -40°C to $+125^{\circ}\text{C}$.

For full details on the **ADuM7702**, see the **ADuM7702** data sheet, which must be consulted in conjunction with this user guide when using the evaluation board. Full details on the **SDP-H1** are available on the **SDP-H1** product page.

TABLE OF CONTENTS

| | | | |
|--|---|---|----|
| Features | 1 | Test Points | 6 |
| Evaluation Kit Contents..... | 1 | Evaluation Board Software..... | 7 |
| Equipment Needed..... | 1 | Software Installation Procedures..... | 7 |
| Documents Needed..... | 1 | Evaluation Board Setup Procedures | 9 |
| Software Needed | 1 | ACE Software Operation..... | 10 |
| General Description | 1 | Launching the Software..... | 10 |
| Revision History | 2 | Chip View Window Features | 11 |
| Evaluation Board Connection Diagram..... | 3 | Waveform Tab..... | 12 |
| Evaluation Board Hardware..... | 4 | Histogram Tab | 12 |
| Power Supplies | 4 | FFT Tab..... | 12 |
| Input Signals..... | 4 | Exiting the Software..... | 12 |
| Link Configuration Options | 5 | | |
| Sockets and Connectors | 6 | | |

REVISION HISTORY

7/2020—Revision 0: Initial Version

EVALUATION BOARD CONNECTION DIAGRAM

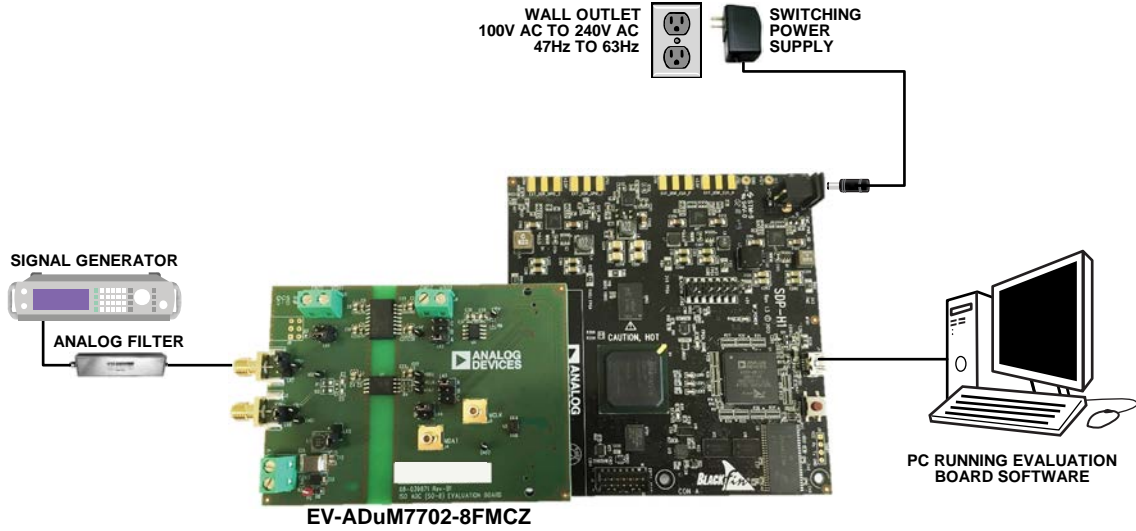


Figure 1.

23726-001

EVALUATION BOARD HARDWARE

POWER SUPPLIES

Ensure that all link positions are set according to the required operating mode before applying power and signals to the EV-ADuM7702-8FMCZ. See Table 2 for the list of link options.

The EV-ADuM7702-8FMCZ is powered via the SDP-H1. The SDP-H1 generates 12 V and 3.3 V supply rails. The 12 V supply is connected to the on-board ADP7104ARDZ-5.0 that powers the ADuM6000. The ADuM6000 generates an isolated 5 V supply to power the V_{DD1} rail of the ADuM7702. The 3.3 V supply rail generated by the SDP-H1 powers the V_{DD2} rail of the ADuM7702.

To power V_{DD1} externally, connect an external power supply in the 23 V to 25 V range to the high voltage (HIGH_V) J7 connector; or connect an external power supply in the 4.5 V to 5.5 V range to the J5 connector.

To power V_{DD2} externally, connect an external power supply in the 3 V to 5.5 V range to the J6 connector.

There are two main ground planes, GND₁ and GND₂, on the ADuM7702. The GND₁ and GND₂ planes are isolated with a creepage and clearance of 8 mm.

When an external voltage is supplied to the J6 input connector, and the EV-ADuM7702-8FMCZ is connected to the SDP-H1, ensure that the voltage does not exceed 3.3 V. Exceeding 3.3 V causes permanent damage to the SDP-H1.

INPUT SIGNALS

Do not exceed an analog input of ±50 mV (±64 mV at full scale) to the ADuM7702. Connect an input signal of up to 500 mV p-p to the EV-ADuM7702-8FMCZ via the J1 analog input connector.

The EV-ADuM7702-8FMCZ has analog and digital ground planes that are physically isolated from each other. Power to the analog supply rail is supplied through the on-board ADuM6000. V_{DD1} can be supplied from the J5 external connector or from the HIGH_V J7 external connector. The on-board ADP2360ACPZ-5.0 steps a 24 V supply connected to the J7 connector down to 5 V. See Table 1 and Table 2 for more information about supplying V_{DD1} externally.

Table 1. External Power Supplies (Optional)

| Power Supply | Connector | Voltage Range | Purpose |
|------------------|-----------|------------------|---|
| V _{DD1} | J5 | 4.5 V to 5.5 V | Analog supply rail |
| V _{DD2} | J6 | 3 V to 5.5 V | Digital supply rail without the SDP-H1 connected |
| | | 3.15 V to 3.45 V | Digital supply rail with the SDP-H1 connected |
| HIGH_V | J7 | 23 V to 25 V | Analog supply rail (high voltage alternative to J5) |

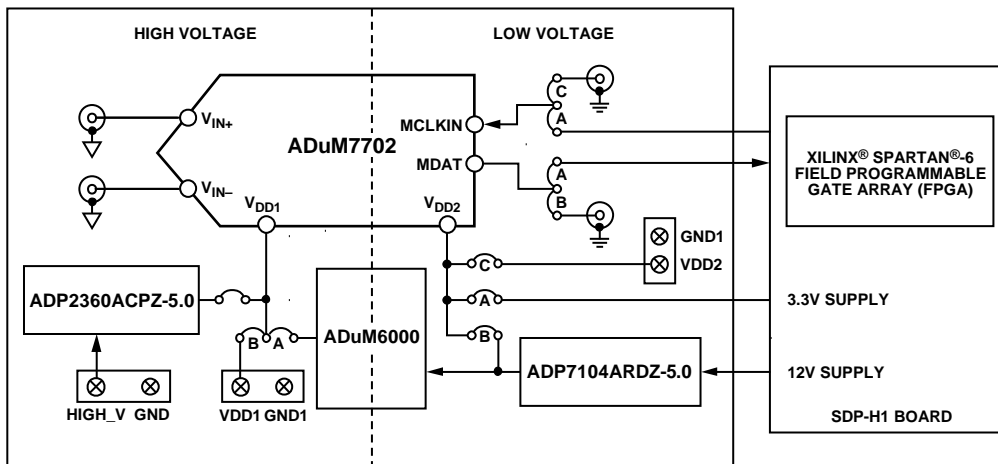


Figure 2. EV-ADuM7702-8FMCZ Block Diagram

23726-002

LINK CONFIGURATION OPTIONS

Multiple link options must be set properly to select the appropriate operating setup before using the EV-ADuM7702-8FMCZ. The functions of these link options are outlined in Table 2.

Setup Conditions

Ensure that all link positions are set as required by the operating mode before applying power and signals to the EV-ADuM7702-

8FMCZ. The EV-ADuM7702-8FMCZ operates in standalone mode or in [SDP-H1](#) controlled mode when used with the [SDP-H1](#).

Table 2 shows the default positions of the links when the EV-ADuM7702-8FMCZ is packaged. When the EV-ADuM7702-8FMCZ is shipped, the evaluation board is set up to operate in [SDP-H1](#) controlled mode with power supplied from the [SDP-H1](#). The on-board [ADuM6000](#) powers V_{DD1} .

Table 2. Link Options

| Category | Link | Default Position | Function |
|------------------|------|------------------|--|
| Power Supplies | LK1 | A | LK1 selects the ADuM7702 V_{DD1} supply source. Remove LK5 if using Position A or Position B. In Position A, the on-board ADuM6000 supplies V_{DD1} . In Position B, the J5 connector supplies V_{DD1} externally. |
| | LK5 | Removed | Insert LK5 to power V_{DD1} with the on-board ADP2360ACPZ-5.0 via the J7 connector. Remove LK5 if V_{DD1} is powered via LK1. |
| | LK2 | A | LK2 selects the ADuM7702 V_{DD2} supply source. In Position A, the SDP-H1 supplies V_{DD2} . In Position B, the on-board ADP7104ARDZ-5.0 supplies V_{DD2} . In Position C, the J6 connector supplies V_{DD2} externally. |
| Analog Input | LK7 | Removed | Insert LK7 to short V_{IN+} to ground. Remove LK7 if a signal is applied to V_{IN+} . |
| | LK8 | Inserted | Insert LK8 to short V_{IN-} to ground. Remove LK8 if a signal is applied to V_{IN-} . |
| Serial Interface | LK3 | A | LK3 selects the MCLKIN source for the serial interface. In Position A, the SDP-H1 sources MCLKIN. In Position B, do not use. In Position C, the J3 Subminiature Version B (SMB) jack sources MCLKIN (standalone mode). |
| | LK4 | A | LK4 routes the MDAT output for the serial interface. In Position A, MDAT is sent to the SDP-H1 . In Position B, MDAT is sent to the J4 SMB jack (standalone mode). |

SOCKETS AND CONNECTORS

Table 3 describes the connectors and sockets on the EV-ADuM7702-8FMCZ.

Table 3. On-Board Connectors

| Connector | Function |
|-----------|--|
| J1 | Analog input V_{IN+} |
| J2 | Analog input V_{IN-} |
| J3 | MCLK input (standalone mode) |
| J4 | MDAT output (standalone mode) |
| J5 | V_{DD1} external source |
| J6 | V_{DD2} external source |
| J7 | V_{DD1} external source (high voltage) |

The default interface to the EV-ADuM7702-8FMCZ is achieved via the 160-way connector. The connector attaches the EV-ADuM7702-8FMCZ to the [SDP-H1](#). When the EV-ADuM7702-8FMCZ is used in standalone mode, communication is achieved via the J3 SMB jack and the J4 SMB jack. See Table 2 for more information on configuring the EV-ADuM7702-8FMCZ for standalone mode.

TEST POINTS

There are several test points on the EV-ADuM7702-8FMCZ. These test points provide access to the EV-ADuM7702-8FMCZ signals for probing, evaluation, and debugging.

EVALUATION BOARD SOFTWARE SOFTWARE INSTALLATION PROCEDURES

Download the [ACE](#) software from the [ACE](#) software page. Install the [ACE](#) software before using the EV-ADuM7702-8FMCZ.

The [ACE](#) installation process in the Installing the [ACE](#) Software section includes the [ACE](#) software installation and the [SDP-H1](#) driver installation.

Install the [ACE](#) software and [SDP-H1](#) drivers before connecting the EV-ADuM7702-8FMCZ and the [SDP-H1](#) to the USB port of the PC to ensure that the evaluation system is properly recognized when it is connected to the PC.

Installing the [ACE](#) Software

To install the [ACE](#) software, take the following steps:

1. Download the [ACE](#) software to a Windows®-based PC.
2. Double click the **ACEInstall.exe** file to begin the installation. By default, the [ACE](#) software is saved to the following location: **C:\Program Files (x86)\Analog Devices\ACE**.
3. A dialog box opens asking for permission to allow the program to make changes to the PC. Click **Yes** to start the installation process.
4. In the **ACE Setup** window, click **Next >** to continue the installation (see Figure 3).

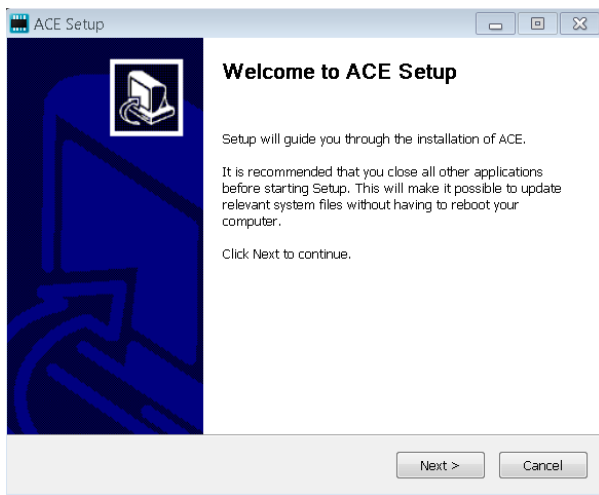


Figure 3. [ACE](#) Software Installation Confirmation

5. Read the software license agreement and click **I Agree** (see Figure 4).

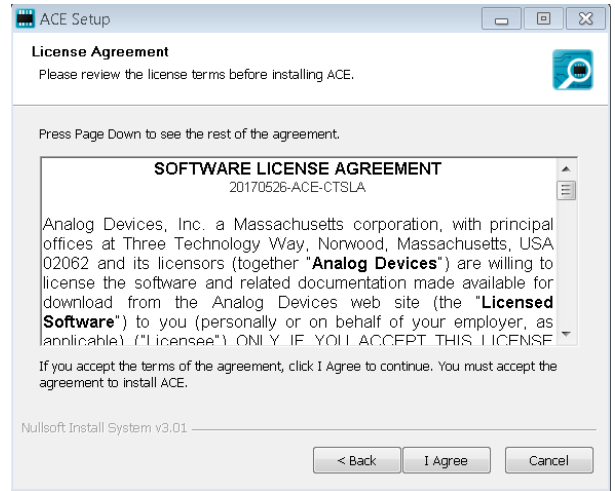


Figure 4. License Agreement

6. Click **Browse...** to choose the installation location and then click **Next >** (see Figure 5).

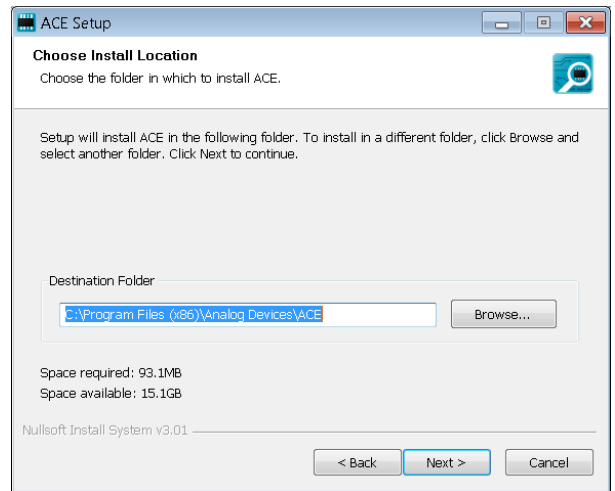


Figure 5. Choose Installation Location

- The ACE software components to install are preselected (see Figure 6). Click **Install**.

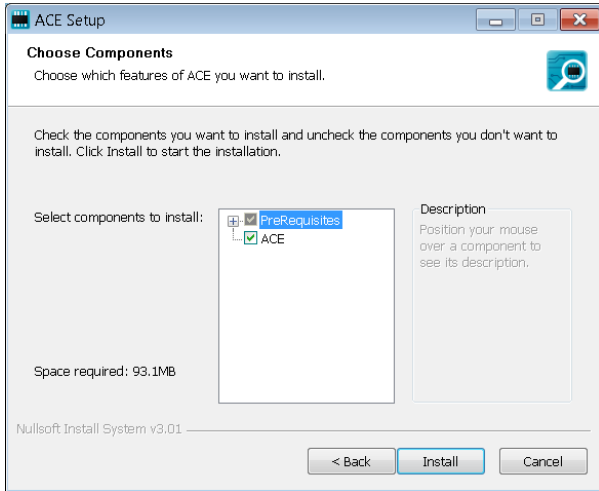


Figure 6. Choose Components

- The **Windows Security** window opens (see Figure 7). Click **Install**. Figure 8 shows the installation in progress. No action is required.

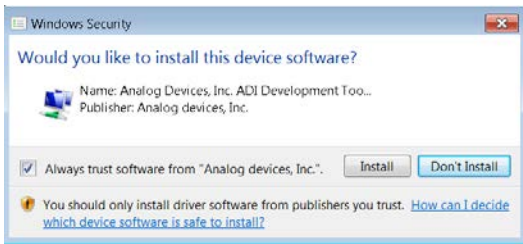


Figure 7. Windows Security Window

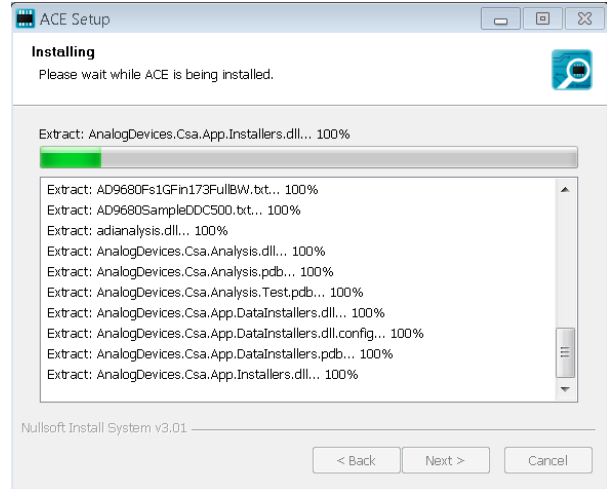


Figure 8. Installation in Progress

- When the installation is complete, click **Next >** (see Figure 9), and then click **Finish** to complete the installation process.

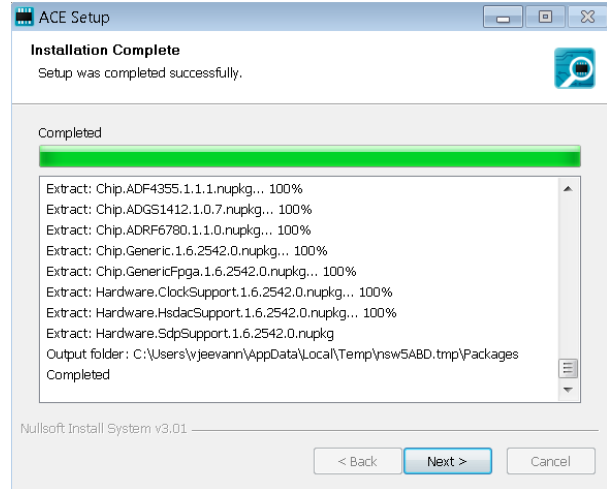


Figure 9. Installation Complete

EVALUATION BOARD SETUP PROCEDURES

The EV-ADuM7702-8FMCZ connects to the SDP-H1. The SDP-H1 is the communication link between the PC and the EV-ADuM7702-8FMCZ. A diagram of the connections between the EV-ADuM7702-8FMCZ and the SDP-H1 is shown in Figure 11.

Connecting the EV-ADuM7702-8FMCZ and the SDP-H1 to the PC

After the ACE software is installed, take the following steps to set up the EV-ADuM7702-8FMCZ and the SDP-H1:

1. Ensure that all configuration links are in the proper positions, as described in Table 2.
2. Connect the EV-ADuM7702-8FMCZ to the 160-way connector on the SDP-H1.
3. To power up the SDP-H1, insert the 12 V, dc barrel jack (included in the SDP-H1 kit) into the barrel connector labeled +12V_VIN on the SDP-H1. Note that the EV-ADuM7702-8FMCZ does not require an external power supply adapter.
4. Connect the SDP-H1 to the PC via the USB cable included in the SDP-H1 kit.

Verifying the Board Connection

After connecting the power and the USB cable from the SDP-H1 to the PC, take the following steps to verify the board connection:

1. After connecting the SDP-H1 to the PC, allow the **Found New Hardware Wizard** to run. If prompted by the operating system, choose to automatically search for the drivers for the SDP-H1.

2. Navigate to the **Device Manager** window on the PC (see Figure 10).
3. A dialog box opens asking for permission to allow the program to make changes to the computer. Click **Yes**.
4. The **Computer Management** window opens. In the list labeled **System Tools**, click **Device Manager**. If the SDP-H1 driver is installed, and the board is properly connected to the PC, **Analog Devices SDP-H1** is shown in the **ADI Development Tools** list in the **Device Manager** window, as shown in Figure 10.

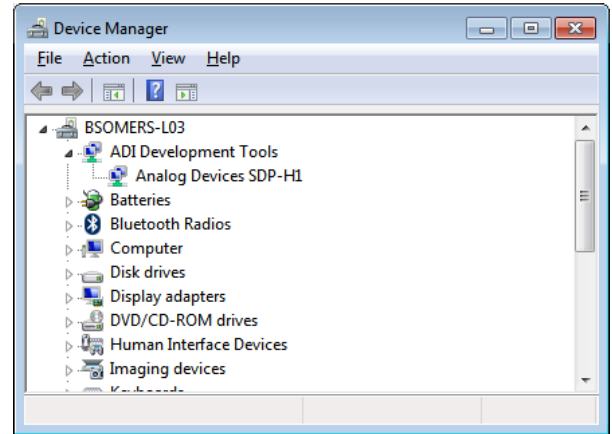


Figure 10. Device Manager Window

Disconnecting the EV-ADuM7702-8FMCZ

Disconnect power from the SDP-H1, or press the reset tact switch located alongside the mini USB port on the SDP-H1 before disconnecting the EV-ADuM7702-8FMCZ from the SDP-H1.

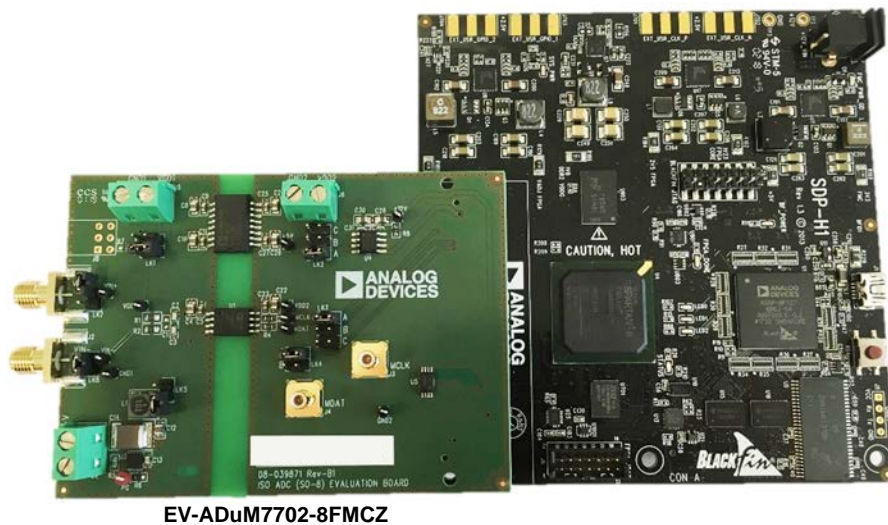


Figure 11. EV-ADuM7702-8FMCZ (Left) and SDP-H1 (Right) Connection

ACE SOFTWARE OPERATION

LAUNCHING THE SOFTWARE

When the EV-ADuM7702-8FMCZ and the [SDP-H1](#) are properly connected to the PC, launch the [ACE](#) software by taking the following steps:

1. In the **Start** menu of the PC, click **All Programs > Analog Devices > ACE > ACE.exe** to open the [ACE](#) software main window shown in Figure 12.
2. Connect an input signal via the V_{IN+} J1 connector. Note that if the EV-ADuM7702-8FMCZ is not connected to the

USB port via the [SDP-H1](#) when the [ACE](#) software launches, the **ADuM7702 Eval Board** icon does not appear in the **Attached Hardware** section in [ACE](#) (see Figure 12). To make the **ADuM7702 Eval Board** icon appear, connect the EV-ADuM7702-8FMCZ and the [SDP-H1](#) to the USB port of the PC, wait a few seconds, and then follow the instructions in the dialog box that opens.

3. Double click the **ADuM7702 Eval Board** icon (see Figure 12) to open the chip view window shown in Figure 13.

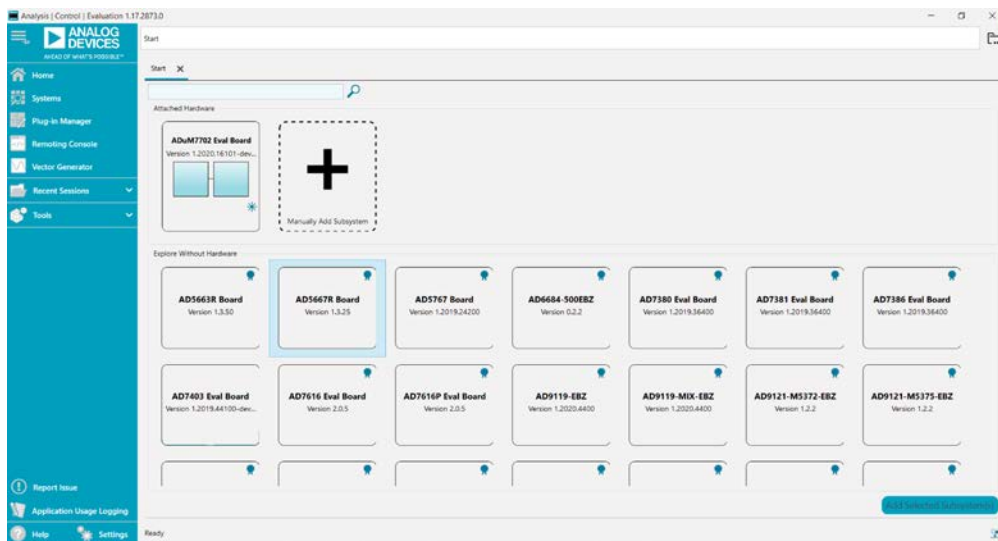


Figure 12. [ACE](#) Software Main Window

23726-012

CHIP VIEW WINDOW FEATURES

Click **Proceed to Analysis** in the chip view window of the ACE software (see Figure 13) to open the analysis view window shown in Figure 14. The analysis view window contains the

Waveform tab, **Histogram** tab, and **FFT** tab on the left side of the window.

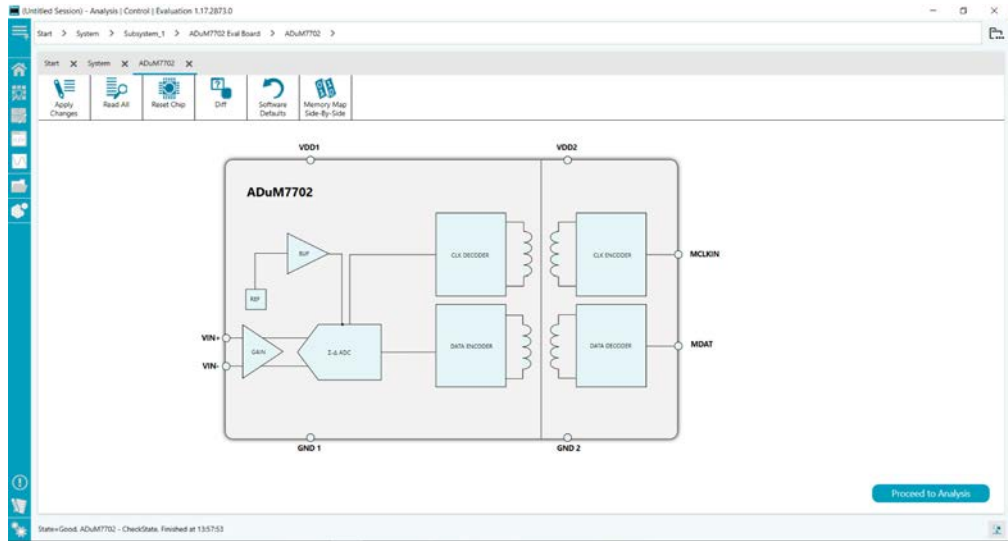


Figure 13. Chip View Window

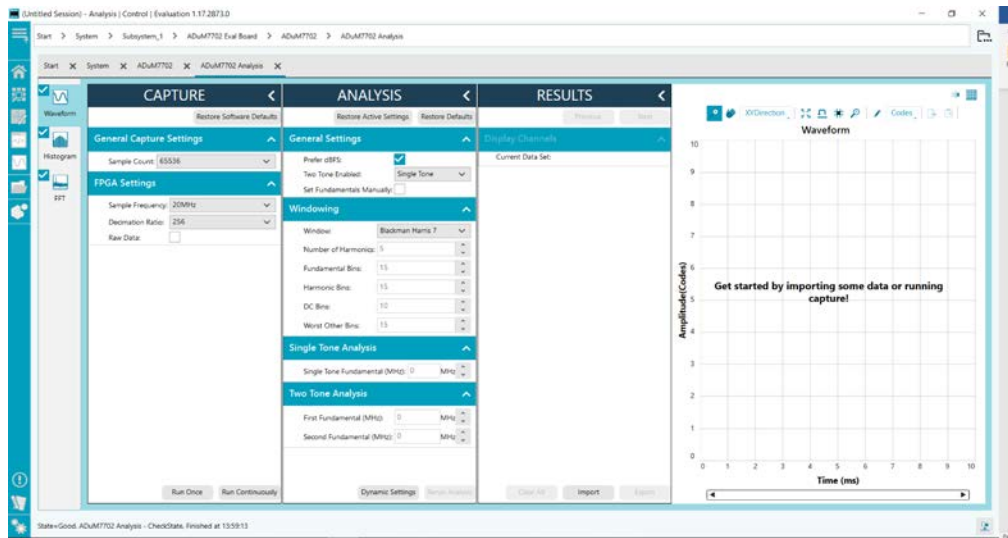


Figure 14. Analysis View Window

WAVEFORM TAB

The **Waveform** tab in the analysis view window displays data in the form of time vs. discrete data values with the results (see Figure 15).

CAPTURE

The **CAPTURE** pane contains the capture settings. These settings reflect onto the registers automatically before data capture.

The **Sample Count** field in the **General Capture Settings** section allows the user to select the number of samples per channel per capture (see Figure 15).

The **FPGA Settings** section contains the FPGA settings that specify the **Sample Frequency** used for the serial interface, as well as the **Decimation Ratio** used by the FPGA to filter the data (see Figure 15).

Click **Run Once** at the bottom of the **CAPTURE** pane to start a data capture of the samples at the sample rate specified in the **Sample Count** field (see Figure 15). These samples are stored on the **SDP-H1** and are only transferred to the PC when the sample frame is complete.

Click **Run Continuously** to start a data capture that gathers samples continuously with one batch of data at a time (see Figure 15).

RESULTS

The **Display Channels** section allows the user to select which channels to capture (see Figure 15). Data for a specific channel is only shown if that channel is selected before the capture.

The **Waveform** section displays the amplitude and sample frequency for the selected channel.

Click **Export** to export captured data (see Figure 15). The waveform, histogram, and FFT data is stored in .xml files along with the values of parameters at capture.

The **Waveform** graph shows each successive sample of the ADC output (see Figure 15). Zoom in on and pan over the **Waveform** graph using the embedded waveform tools above the graph. Select the channels to display in the **Display Channels** section.

Under the **Display Unit** dropdown menu, select **Codes** above the **Waveform** graph (see Figure 15) to select whether the **Waveform** graph displays in units of **Codes**, **Hex**, or **Volts**. The axis controls are dynamic.

Note that the corresponding axis width of the **Waveform** graph automatically adjusts to show the entire range of the ADC results after each batch of samples when either **xy scale dynamic** or **x scale dynamic** is selected. Select the dynamic using the **XYDirection** tool (see Figure 15).

HISTOGRAM TAB

The **Histogram** tab contains the **Histogram** graph and the **RESULTS** pane (see Figure 16).

Click the **RESULTS** pane to display the information related to the dc performance.

The **Histogram** graph displays the number of hits per code within the sampled data (see Figure 16). The **Histogram** graph also displays dc analysis and indicates the noise performance of the **ADuM7702**.

FFT TAB

The **FFT** tab displays fast Fourier transform (FFT) information for the last batch of samples gathered (see Figure 17).

The **General Settings** section on the **ANALYSIS** pane allows the user to set up the preferred configuration of the FFT analysis (see Figure 17). The fundamental is set manually.

The **Windowing** section on the **ANALYSIS** pane allows the user to select the windowing type used in the FFT analysis, the number of **Harmonic Bins**, and the number of **Fundamental Bins** that must be included (see Figure 17).

The **Single Tone Analysis** and **Two Tone Analysis** sections on the **ANALYSIS** pane allow the user to select the fundamental frequency included in the FFT analysis (see Figure 17). Use the **Two Tone Analysis** settings when analyzing two frequencies.

The **Signal** section on the **RESULTS** pane displays the **Sample Frequency**, **Sample Count**, **Fund Frequency**, and **Fund Power** (see Figure 17).

The **Noise** section on the **RESULTS** pane displays the SNR and other noise performance results (see Figure 17).

The **Distortion** section on the **RESULTS** pane displays the harmonic content of the sampled signal and the dc power when viewing the FFT analysis (see Figure 17).

EXITING THE SOFTWARE

To exit the **ACE** software, click **File** and then click **Exit**.

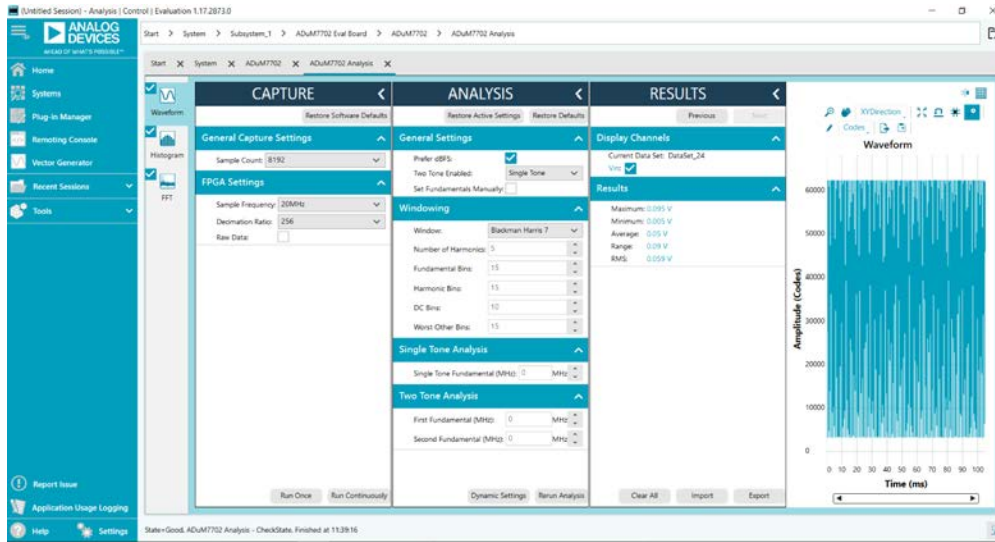


Figure 15. Waveform Tab

23726-015

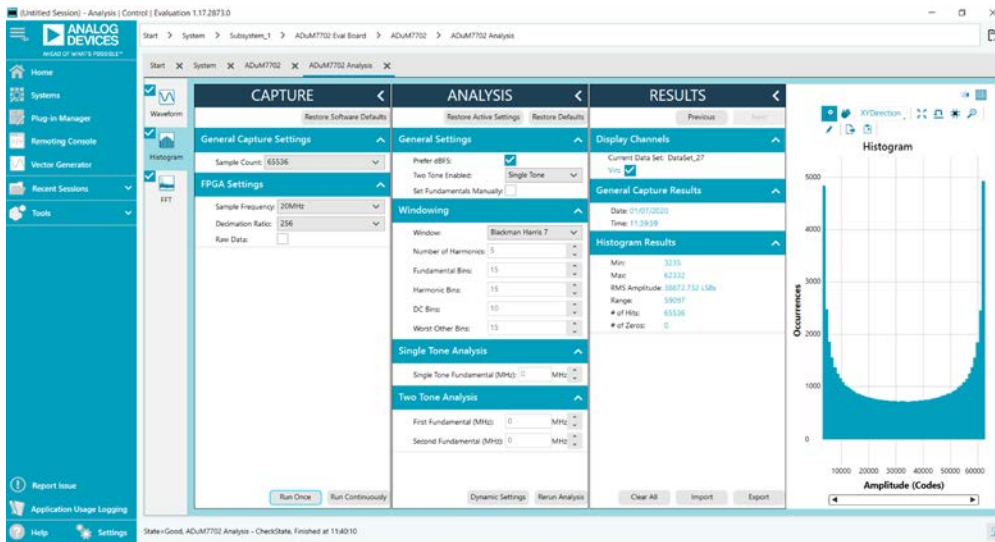


Figure 16. Histogram Tab

23726-016

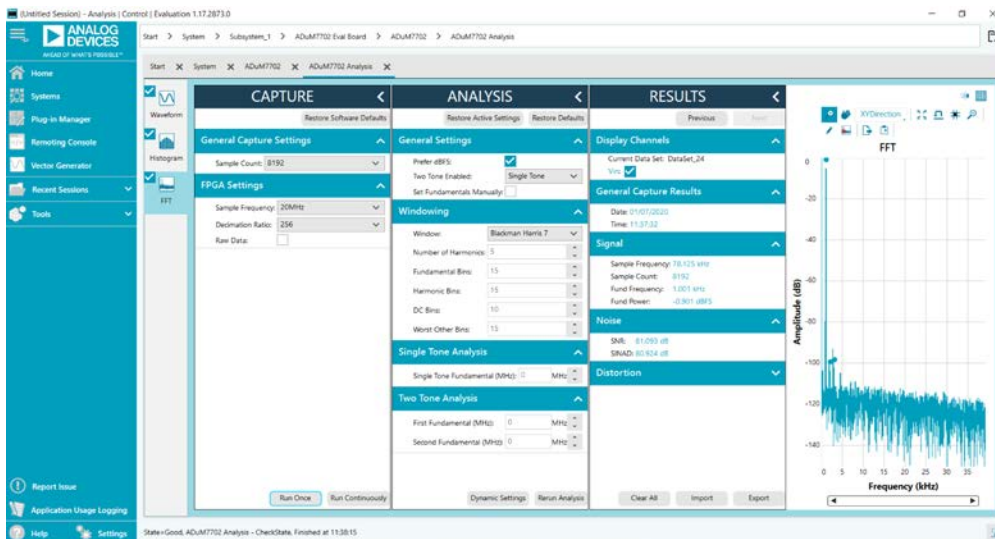


Figure 17. FFT Tab

23726-017

NOTES

**ESD Caution**

ESD (electrostatic discharge) sensitive device. Charged devices and circuit boards can discharge without detection. Although this product features patented or proprietary protection circuitry, damage may occur on devices subjected to high energy ESD. Therefore, proper ESD precautions should be taken to avoid performance degradation or loss of functionality.

Legal Terms and Conditions

By using the evaluation board discussed herein (together with any tools, components documentation or support materials, the "Evaluation Board"), you are agreeing to be bound by the terms and conditions set forth below ("Agreement") unless you have purchased the Evaluation Board, in which case the Analog Devices Standard Terms and Conditions of Sale shall govern. Do not use the Evaluation Board until you have read and agreed to the Agreement. Your use of the Evaluation Board shall signify your acceptance of the Agreement. This Agreement is made by and between you ("Customer") and Analog Devices, Inc. ("ADI"), with its principal place of business at One Technology Way, Norwood, MA 02062, USA. Subject to the terms and conditions of the Agreement, ADI hereby grants to Customer a free, limited, personal, temporary, non-exclusive, non-sublicensable, non-transferable license to use the Evaluation Board FOR EVALUATION PURPOSES ONLY. Customer understands and agrees that the Evaluation Board is provided for the sole and exclusive purpose referenced above, and agrees not to use the Evaluation Board for any other purpose. Furthermore, the license granted is expressly made subject to the following additional limitations: Customer shall not (i) rent, lease, display, sell, transfer, assign, sublicense, or distribute the Evaluation Board; and (ii) permit any Third Party to access the Evaluation Board. As used herein, the term "Third Party" includes any entity other than ADI, Customer, their employees, affiliates and in-house consultants. The Evaluation Board is NOT sold to Customer; all rights not expressly granted herein, including ownership of the Evaluation Board, are reserved by ADI. CONFIDENTIALITY. This Agreement and the Evaluation Board shall all be considered the confidential and proprietary information of ADI. Customer may not disclose or transfer any portion of the Evaluation Board to any other party for any reason. Upon discontinuation of use of the Evaluation Board or termination of this Agreement, Customer agrees to promptly return the Evaluation Board to ADI. ADDITIONAL RESTRICTIONS. Customer may not disassemble, decompile or reverse engineer chips on the Evaluation Board. Customer shall inform ADI of any occurred damages or any modifications or alterations it makes to the Evaluation Board, including but not limited to soldering or any other activity that affects the material content of the Evaluation Board. Modifications to the Evaluation Board must comply with applicable law, including but not limited to the RoHS Directive. TERMINATION. ADI may terminate this Agreement at any time upon giving written notice to Customer. Customer agrees to return to ADI the Evaluation Board at that time. LIMITATION OF LIABILITY. THE EVALUATION BOARD PROVIDED HEREUNDER IS PROVIDED "AS IS" AND ADI MAKES NO WARRANTIES OR REPRESENTATIONS OF ANY KIND WITH RESPECT TO IT. ADI SPECIFICALLY DISCLAIMS ANY REPRESENTATIONS, ENDORSEMENTS, GUARANTEES, OR WARRANTIES, EXPRESS OR IMPLIED, RELATED TO THE EVALUATION BOARD INCLUDING, BUT NOT LIMITED TO, THE IMPLIED WARRANTY OF MERCHANTABILITY, TITLE, FITNESS FOR A PARTICULAR PURPOSE OR NON-INFRINGEMENT OF INTELLECTUAL PROPERTY RIGHTS. IN NO EVENT WILL ADI AND ITS LICENSORS BE LIABLE FOR ANY INCIDENTAL, SPECIAL, INDIRECT, OR CONSEQUENTIAL DAMAGES RESULTING FROM CUSTOMER'S POSSESSION OR USE OF THE EVALUATION BOARD, INCLUDING BUT NOT LIMITED TO LOST PROFITS, DELAY COSTS, LABOR COSTS OR LOSS OF GOODWILL. ADI'S TOTAL LIABILITY FROM ANY AND ALL CAUSES SHALL BE LIMITED TO THE AMOUNT OF ONE HUNDRED US DOLLARS (\$100.00). EXPORT. Customer agrees that it will not directly or indirectly export the Evaluation Board to another country, and that it will comply with all applicable United States federal laws and regulations relating to exports. GOVERNING LAW. This Agreement shall be governed by and construed in accordance with the substantive laws of the Commonwealth of Massachusetts (excluding conflict of law rules). Any legal action regarding this Agreement will be heard in the state or federal courts having jurisdiction in Suffolk County, Massachusetts, and Customer hereby submits to the personal jurisdiction and venue of such courts. The United Nations Convention on Contracts for the International Sale of Goods shall not apply to this Agreement and is expressly disclaimed.