

## User Guide for Advantiv ADV7842/ADV7511 Video Evaluation Board

### FEATURES

- 2 HDMI inputs, 1 HDMI output**
- Component input**
- Composite input**
- VGA input**
- S-Video input**
- Mini-USB connector for USB control port**
- RS-232 control port**
- Jumperable signal paths for audio and video**

### GENERAL DESCRIPTION

The Advantiv™ [ADV7842/ADV7511](#) video evaluation board is a low cost solution for evaluating the performance of the ADV7842 HDMI receiver and video decoder ADC. This board can also be used to evaluate the ADV7511.

The evaluation board provides a Blackfin® BF524 processor for system control. The Blackfin offers the potential to process audio (no audio software is included). A serial command interface can be accessed via the USB or the serial port to interact with the ADV7842 and the ADV7511.

This evaluation board is available for purchase with or without HDCP support. Boards with HDCP support are only available to licensees of HDCP.

### EVALUATION BOARD

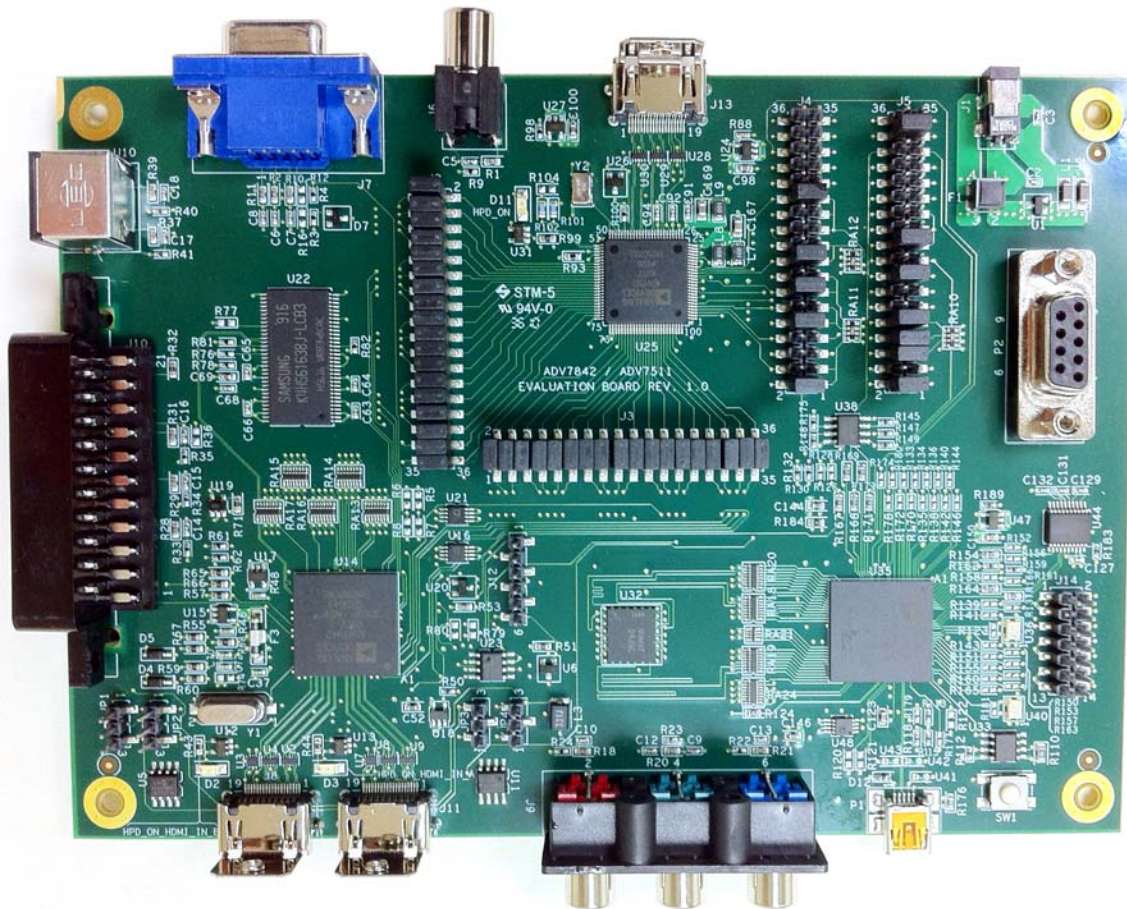


Figure 1. Advantiv ADV7842/ADV7511 Video Evaluation Board with Factory Jumper Settings

08577-001

**TABLE OF CONTENTS**

|   |   |                                     |   |
|---|---|-------------------------------------|---|
| Features .....                                | 1 | Command Line Without Repeater ..... | 5 |
| General Description .....                     | 1 | Command Line with Repeater .....    | 5 |
| Evaluation Board .....                        | 1 | DVP Evaluation Software/XRC.....    | 5 |
| Revision History .....                        | 2 | Jumper Configuration.....           | 6 |
| Evaluation Board Hardware and Schematic ..... | 3 | Audio Jumper Configurations.....    | 6 |
| Using the Evaluation Board.....               | 4 | EDID Jumpers.....                   | 8 |
| Terminology .....                             | 4 | Programming the BF524 .....         | 9 |
| Evaluation Board Usage.....                   | 4 |                                     |   |

**REVISION HISTORY**

1/11—Revision 0: Initial Version

# EVALUATION BOARD HARDWARE AND SCHEMATIC

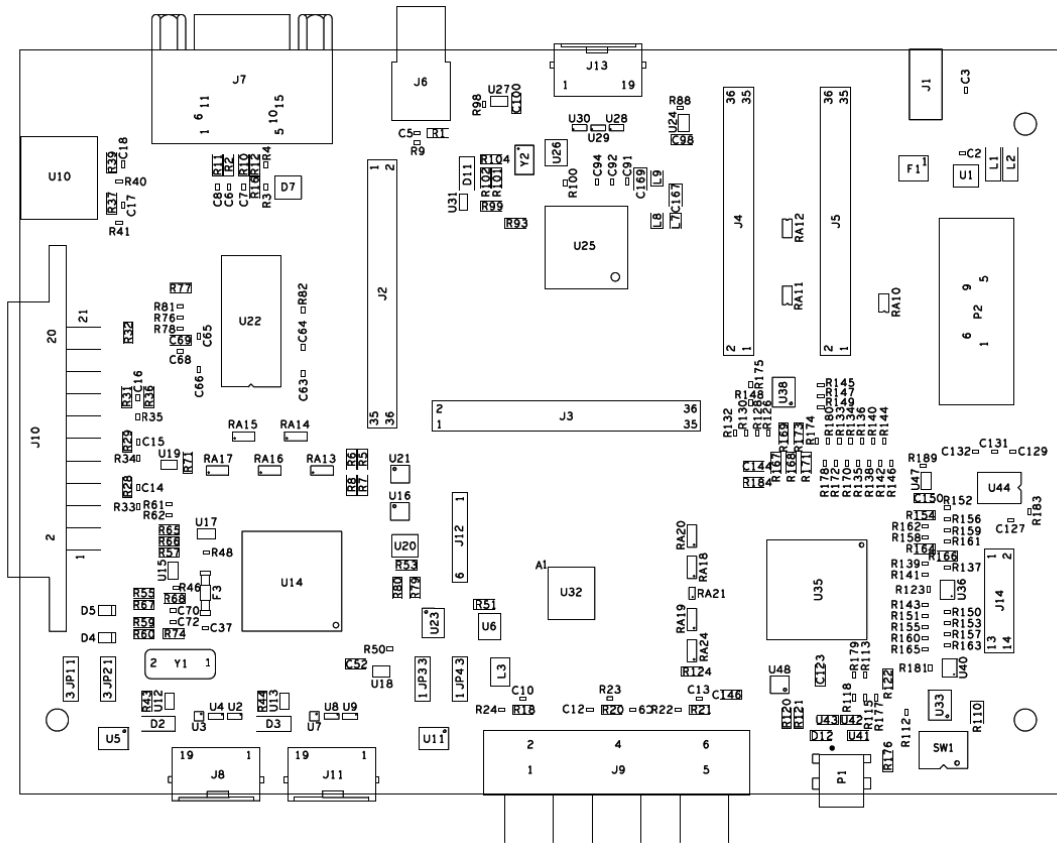


Figure 2. ADV7842/ADV7511 Evaluation Board Schematic

09577-002

Table 1. Evaluation Board Hardware Components

| Component | Function              | Description   |
|-----------|-----------------------|---|
| J9        | Component video input | Component video input to the <a href="#">ADV7842/ADV7511</a>  |
| J8, J11   | HDMI Inputs           | J8 is HDMI Port A, J11 is HDMI Port B   |
| P1        | Mini-USB              | Mini-USB control port to communicate with the Blackfin  |
| SW1       | Reset                 | This switch resets the Blackfin   |
| J1        | Power                 | J1 is where the 5 V, 2.5 A power supply is connected  |
| J14       | BF524 JTAG            | The ICE-100B or the HPUSE-ICE is connected here to reprogram the system flash or for source code debugging  |
| P2        | Serial port           | The UART debug port can be used in place of the USB   |
| JP3, JP4  | Port B EDID           | These jumpers (bottom middle) connect the I <sup>2</sup> C bus from the Blackfin to the EDID EEPROM   |
| JP1, JP2  | Port A EDID           | These jumpers (lower left) connect the I <sup>2</sup> C bus from the Blackfin to the EDID EEPROM  |
| J12       | VGA EDID              | This connector can be used to program the SPI EDID flash for the VGA port   |
| J13       | HDMI output           | This is the only video output connector   |
| J6        | Composite input       | This is a standard CVBS/composite connector for NTSC or PAL to the ADV7842/ADV7511  |
| J7        | VGA input             | VGA/graphics input to the ADV7842/ADV7511   |
| U10       | SVIDEO input          | Y/C analog input for NTSC or PAL to the ADV7842/ADV7511   |
| J4, J5    | Audio, debug Header   | The audio bus can be jumpered between three configurations on these connectors. They also have several system signals available for probing as well as video syncs and clock. |

## USING THE EVALUATION BOARD

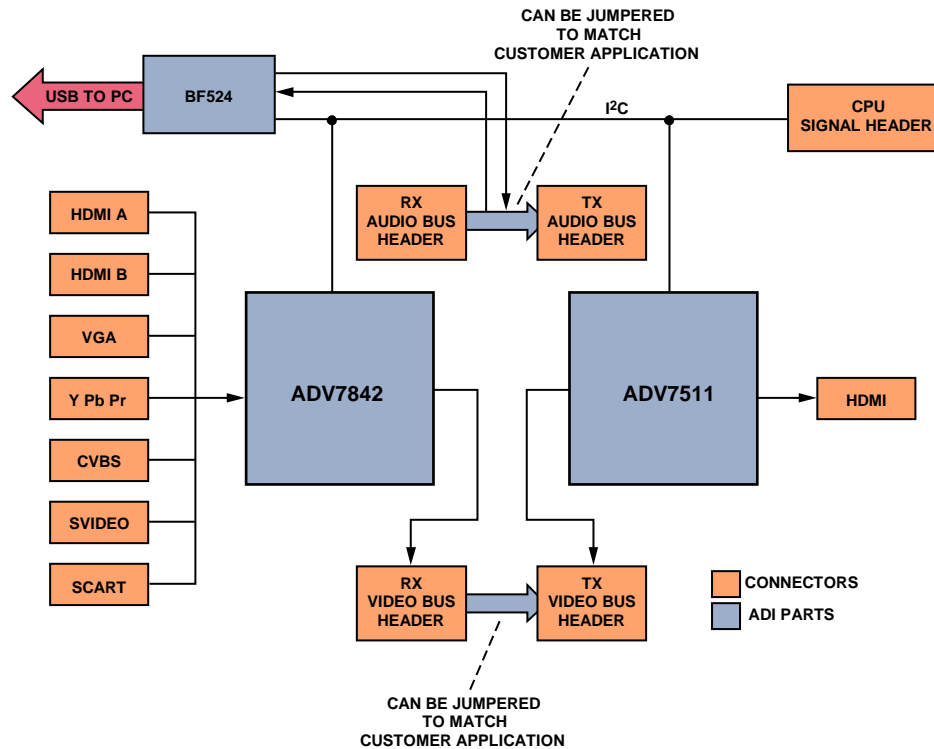


Figure 3. Block Diagram

### TERMINOLOGY

The terms listed and described in this section are used in this user guide.

#### Source

Plays video out of a standard video port. This includes DVDs, cameras, set top boxes, Blu-ray players, game consoles, or any other device with a video output of any of the types supported by the board.

#### Sink

Accepts video in through a standard video port. This is nearly always an HDMI display (monitor or TV) in the context of this evaluation board.

#### Repeater

Refers to the software that implements the link between source and sink with respect to this board, and which runs on the BF524.

#### Serial interface

Refers to the command line interface from the board regardless of whether it is from the UART or USB port.

### EVALUATION BOARD USAGE

The evaluation board can be connected as shown in Figure 3. By default, the video buses of the ADV7842 and ADV7511 are directly connected, and the I<sup>2</sup>S/SPDIF outputs of the ADV7842 are directly connected to the I<sup>2</sup>S/SPDIF inputs of the ADV7511.

All video inputs are available on both versions of the board. Note that a board, which is not HDCP enabled will not work with most consumer HDMI sources, thus, a devoted test source is needed. An HDCP license is required to purchase an HDCP-enabled board. A license is not required to purchase the non-HDCP-enabled board.

The board can be controlled either by a standard serial cable on P2 or a mini-USB cable on P1. In either case, the interface shows up on the controlling PC as a COM port. To use the USB, a driver must be downloaded from the location indicated on the card enclosed with the board (This is typically on the EngineerZone support community at <http://ez.analog.com>).

The serial interface operates at 115200 baud, 8 data bits, no parity, 1 stop bit, and no flow control. Either UART or USB can be used, but using USB disables the UART. Thus, UART and USB cannot be used simultaneously.

Type **help** at the serial interface to list the commands available to control the board as well as to indicate the version of firmware and build date.

If the board is HDCP enabled, then the Analog Devices, Inc., repeater software starts on boot, allowing an HDMI sink to receive content from an HDMI/HDCP source soon after connection.

Individual registers can be read and written from/to the ADV7842 and ADV7511. There are three main ways to control

the board: command line without repeater, command line with repeater, and DVP evaluation software/XRC.

### COMMAND LINE WITHOUT REPEATER

This mode uses the serial interface. The BF524 boots to a known reset state and registers can be read from and written to directly. In this case, it is safe to assume that all registers will be at their reset value. For a board without HDCP enabled, this is the normal state on boot for the board. A board with HDCP enabled starts the repeater on boot.

It is possible to start the repeater in this mode with the **startrep** command. This only works with HDCP protected sources on an HDCP-enabled board. A non-HDCP-enabled board still operates, but will not authenticate HDCP.

### COMMAND LINE WITH REPEATER

The command line with repeater mode also uses the serial interface and is the typical evaluation control/interface recommended for an HDCP-enabled board. Messages from the repeater are seen on the console as the repeater goes about the normal business of maintaining an encrypted HDMI link as sources, sinks, or formats change. Registers can still be read and

written from the command line, but anything that is written to a register could get overwritten by the repeater software.

In this mode, there are additional commands from the repeater itself. All repeater commands are of the format “rep XXX” where XXX is the repeater command. A list of repeater commands is displayed using the **rep help** command. These commands provide information about the state of the repeater, source, and sink.

### DVP EVALUATION SOFTWARE/XRC

The DVP evaluation software/XRC runs on a PC and uses the USB connection. Evaluation software may be downloaded from the location indicated on the card enclosed with the board (typically on the EngineerZone support community at <http://ez.analog.com>). This software allows scripts to be run from a PC to control the [ADV7842](#) and [ADV7511](#).

For a non-HDCP-enabled board, this software is the easiest way to evaluate different modes of the ADV7842 and ADV7511.

Note that the terms DVP evaluation software and XRC are used interchangeably.

# JUMPER CONFIGURATION

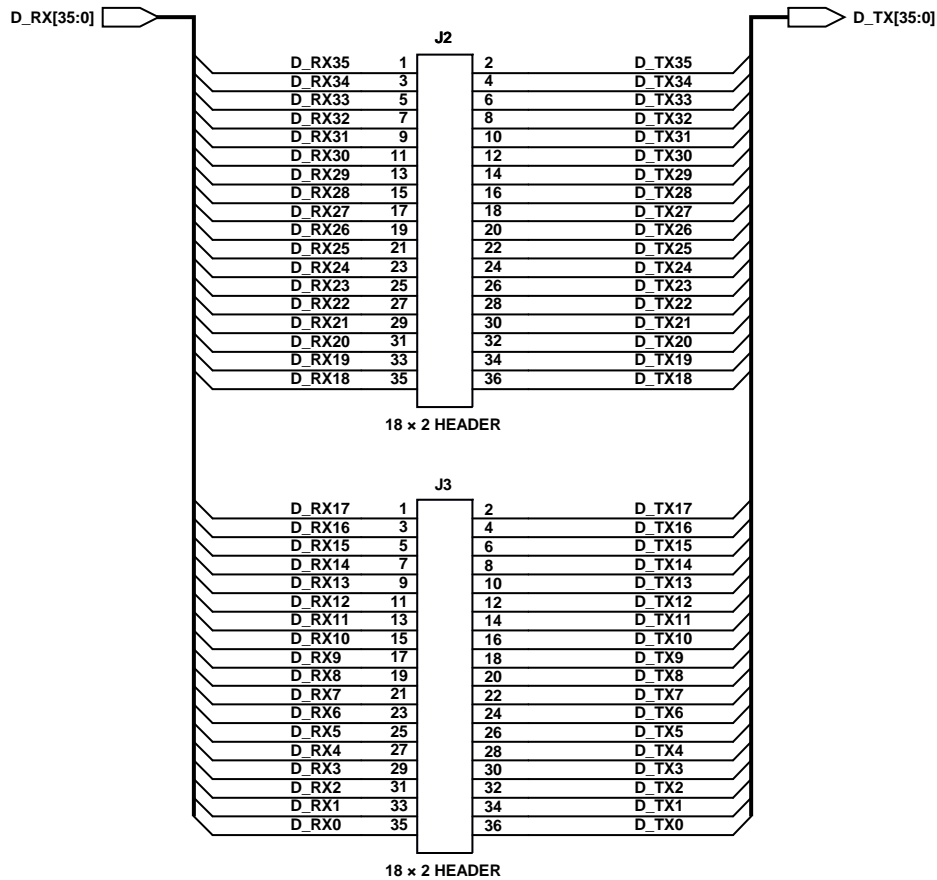


Figure 4. Video Bus Headers

09577-904

Figure 4 shows how the evaluation board video bus headers between the **ADV7842** and **ADV7511** are pinned out. By default, these two busses are directly connected. When referring to jumpers, the phrase “by default” indicates how they are configured at the factory. This user guide assumes that the jumpers are factory set as shown in Figure 1.

If a different connection is required (as when trying to connect a device to a customer-specific system), the video bus jumpers can be reassigned. Keep in mind that signal integrity suffers with long leads. If the jumper configurations are changed, the repeater software no longer operates and serial control customized to the interface configuration will be the only way to test out the configuration.

Information about the pixel port interfaces can be found in the appropriate data sheets.

## AUDIO JUMPER CONFIGURATIONS

There are three primary jumper configurations for audio.

- I<sup>2</sup>S/SPDIF directly from ADV7842 to ADV7511 (as shown in Table 2)
- DSD/DST directly from ADV7842 to ADV7511 (as shown in Table 3)
- I<sup>2</sup>S0 through BF524 from ADV7842 to ADV7511 (as shown in Table 4). This configuration is for a customer experienced with Blackfin audio processing. No software support for this mode is built into the software on the board.

By default, the board comes with the first configuration listed above active.

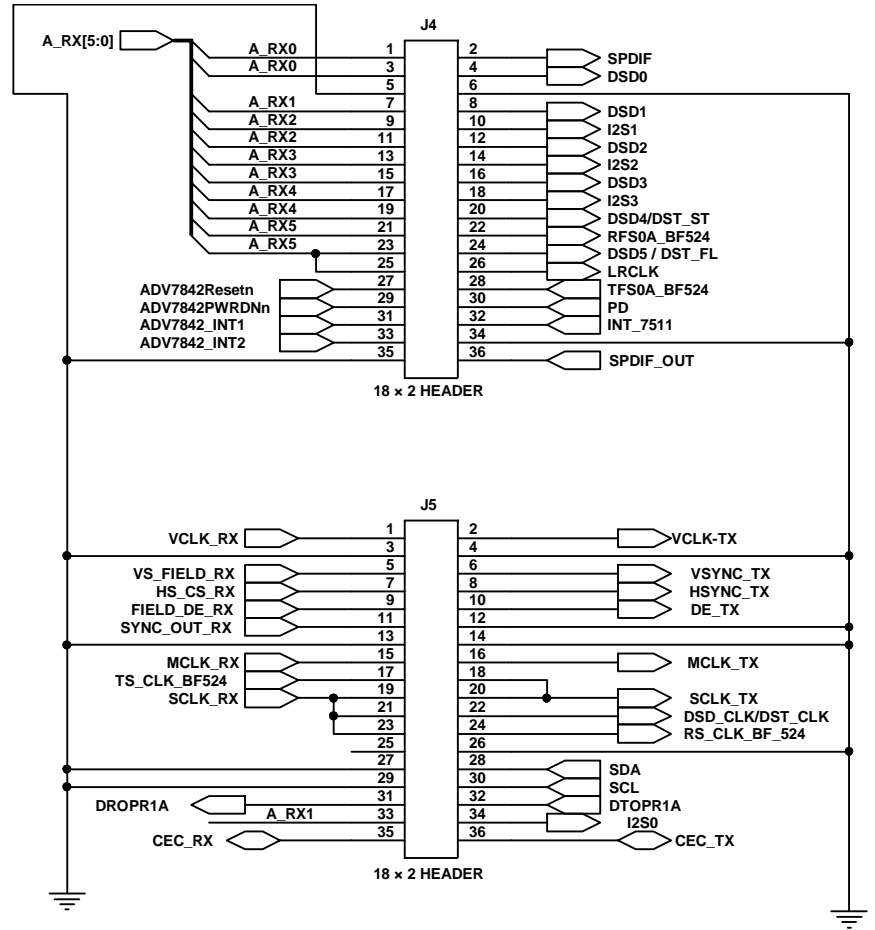


Figure 5. Audio Bus and Debug Headers

Table 2. I<sup>2</sup>S/SPDIF Directly from ADV7842 to ADV7511

| Jumper | Pins     | Description        |
|--------|----------|--------------------|
| J4     | 1 to 2   | A_RX0 to SPDIF     |
| J5     | 33 to 34 | A_RX1 to I2S0      |
| J4     | 9 to 10  | A_RX2 to I2S1      |
| J4     | 13 to 14 | A_RX3 to I2S2      |
| J4     | 17 to 18 | A_RX4 to I2S3      |
| J4     | 25 to 26 | A_RX5 to LRCLK     |
| J5     | 15 to 16 | MCLK_RX to MCLK_TX |
| J5     | 19 to 20 | SCLK_RX to SCLK_TX |

Table 2 shows the default configuration and the most typical. It is required to use the repeater software.

Table 3. DSD/DST Directly from ADV7842 to ADV7511

| Jumper | Pins     | Description            |
|--------|----------|------------------------|
| J4     | 3 to 4   | A_RX0 to DSD0          |
| J4     | 7 to 8   | A_RX1 to DSD1          |
| J4     | 11 to 12 | A_RX2 to DSD2          |
| J4     | 15 to 16 | A_RX3 to DSD3          |
| J4     | 19 to 20 | A_RX4 to DSD4 / DST_ST |
| J4     | 23 to 24 | A_RX5 to DSD5 / DST_FL |
| J5     | 15 to 16 | MCLK_RX to MCLK_TX     |
| J5     | 19 to 20 | SCLK_RX to SCLK_TX     |

The configuration shown in Table 3 is used with sources/sinks that support DSD/DST. It must be used with command line scripts or XRC.

Table 4. I<sup>2</sup>S0 through BF524 from ADV7842 to ADV7511

| Jumper | Pins     | Description              |
|--------|----------|--------------------------|
| J5     | 31 to 33 | A_RX1 to DPROPR1A        |
| J5     | 32 to 34 | DTOPR1A to I2S0          |
| J5     | 23 to 24 | SCLK_RX to RS_CLK_BF_524 |
| J5     | 17 to 18 | TS_CLK_BF524 to SCLK_TX  |
| J4     | 21 to 22 | A_RX5 to RFS0A_BF524     |
| J4     | 26 to 28 | TFS0A_BF524 to LRCLK     |

## EDID JUMPERS

The EDID EEPROMs on the board are, by default, unprogrammed. The repeater software uses the SRAM in the ADV7842 for the EDID. Jumpers are provided to allow programming as well as the use of fixed EDIDs in the EEPROM.

### HDMI Port A and Port B

JP1 and JP2 are used to connect EEPROM U5 to the HDMI DDC lines to allow the use of a fixed EDID. By default, these jumpers should be open and U5 is unused. Connecting Pin 1 and Pin 2 on JP1 and JP2, respectively, puts U5 on the DDC

lines to HDMI Port A. Connecting Pin 2 and Pin 3 puts U5 on the board's regular I<sup>2</sup>C bus, where it can be programmed with data from the debug jumper or the Blackfin. For HDMI Port B, the same applies to JP3 and JP3 with EEPROM U11.

### SPI EDID

U23 is an SPI-programmable EEPROM that can be programmed from J12. The ADV7842 can then be programmed to load its EDID from the SPI memory. This is only used as part of customized software or a script. It is not used by the repeater software.



## PROGRAMMING THE BF524

The Blackfin can be programmed and source-code debugged through the JTAG connector J14. It is possible to program and debug source code using the standard Blackfin development tools VisualDSP++® and the HPUSB-ICE.

A low cost ICE, IDE-100B, is also available. This can be used to simply reprogram the SPI flash with new firmware for the board. The latest firmware release for the board can be found at the location indicated on the card enclosed with the board (typically on the EngineerZone support community at

<http://ez.analog.com>). At a minimum, the ICE-100B and a VisualDSP++ test drive are required to reprogram the board.

A flash driver is needed by the Flash Programmer in VisualDSP++. It is also available for download at the location indicated on the card enclosed with the board (typically on the EngineerZone support community at <http://ez.analog.com>).

For information regarding audio and the BF524, refer to the [Blackfin data sheet](#).

**NOTES**

**NOTES**

## NOTES

**ESD Caution**

**ESD (electrostatic discharge) sensitive device.** Charged devices and circuit boards can discharge without detection. Although this product features patented or proprietary protection circuitry, damage may occur on devices subjected to high energy ESD. Therefore, proper ESD precautions should be taken to avoid performance degradation or loss of functionality.

**Legal Terms and Conditions**

By using the evaluation board discussed herein (together with any tools, components documentation or support materials, the "Evaluation Board"), you are agreeing to be bound by the terms and conditions set forth below ("Agreement") unless you have purchased the Evaluation Board, in which case the Analog Devices Standard Terms and Conditions of Sale shall govern. Do not use the Evaluation Board until you have read and agreed to the Agreement. Your use of the Evaluation Board shall signify your acceptance of the Agreement. This Agreement is made by and between you ("Customer") and Analog Devices, Inc. ("ADI"), with its principal place of business at One Technology Way, Norwood, MA 02062, USA. Subject to the terms and conditions of the Agreement, ADI hereby grants to Customer a free, limited, personal, temporary, non-exclusive, non-sublicensable, non-transferable license to use the Evaluation Board FOR EVALUATION PURPOSES ONLY. Customer understands and agrees that the Evaluation Board is provided for the sole and exclusive purpose referenced above, and agrees not to use the Evaluation Board for any other purpose. Furthermore, the license granted is expressly made subject to the following additional limitations: Customer shall not (i) rent, lease, display, sell, transfer, assign, sublicense, or distribute the Evaluation Board; and (ii) permit any Third Party to access the Evaluation Board. As used herein, the term "Third Party" includes any entity other than ADI, Customer, their employees, affiliates and in-house consultants. The Evaluation Board is NOT sold to Customer; all rights not expressly granted herein, including ownership of the Evaluation Board, are reserved by ADI. CONFIDENTIALITY. This Agreement and the Evaluation Board shall all be considered the confidential and proprietary information of ADI. Customer may not disclose or transfer any portion of the Evaluation Board to any other party for any reason. Upon discontinuation of use of the Evaluation Board or termination of this Agreement, Customer agrees to promptly return the Evaluation Board to ADI. ADDITIONAL RESTRICTIONS. Customer may not disassemble, decompile or reverse engineer chips on the Evaluation Board. Customer shall inform ADI of any occurred damages or any modifications or alterations it makes to the Evaluation Board, including but not limited to soldering or any other activity that affects the material content of the Evaluation Board. Modifications to the Evaluation Board must comply with applicable law, including but not limited to the RoHS Directive. TERMINATION. ADI may terminate this Agreement at any time upon giving written notice to Customer. Customer agrees to return to ADI the Evaluation Board at that time. LIMITATION OF LIABILITY. THE EVALUATION BOARD PROVIDED HEREUNDER IS PROVIDED "AS IS" AND ADI MAKES NO WARRANTIES OR REPRESENTATIONS OF ANY KIND WITH RESPECT TO IT. ADI SPECIFICALLY DISCLAIMS ANY REPRESENTATIONS, ENDORSEMENTS, GUARANTEES, OR WARRANTIES, EXPRESS OR IMPLIED, RELATED TO THE EVALUATION BOARD INCLUDING, BUT NOT LIMITED TO, THE IMPLIED WARRANTY OF MERCHANTABILITY, TITLE, FITNESS FOR A PARTICULAR PURPOSE OR NON-INFRINGEMENT OF INTELLECTUAL PROPERTY RIGHTS. IN NO EVENT WILL ADI AND ITS LICENSORS BE LIABLE FOR ANY INCIDENTAL, SPECIAL, INDIRECT, OR CONSEQUENTIAL DAMAGES RESULTING FROM CUSTOMER'S POSSESSION OR USE OF THE EVALUATION BOARD, INCLUDING BUT NOT LIMITED TO LOST PROFITS, DELAY COSTS, LABOR COSTS OR LOSS OF GOODWILL. ADI'S TOTAL LIABILITY FROM ANY AND ALL CAUSES SHALL BE LIMITED TO THE AMOUNT OF ONE HUNDRED US DOLLARS (\$100.00). EXPORT. Customer agrees that it will not directly or indirectly export the Evaluation Board to another country, and that it will comply with all applicable United States federal laws and regulations relating to exports. GOVERNING LAW. This Agreement shall be governed by and construed in accordance with the substantive laws of the Commonwealth of Massachusetts (excluding conflict of law rules). Any legal action regarding this Agreement will be heard in the state or federal courts having jurisdiction in Suffolk County, Massachusetts, and Customer hereby submits to the personal jurisdiction and venue of such courts. The United Nations Convention on Contracts for the International Sale of Goods shall not apply to this Agreement and is expressly disclaimed.