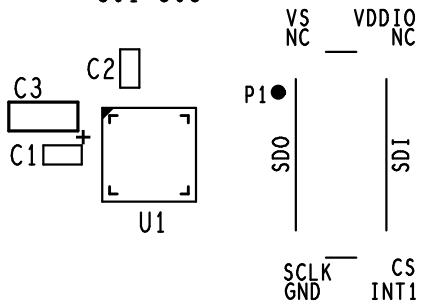


ADXL313Z EVAL BOARD

ANALOG DEVICES

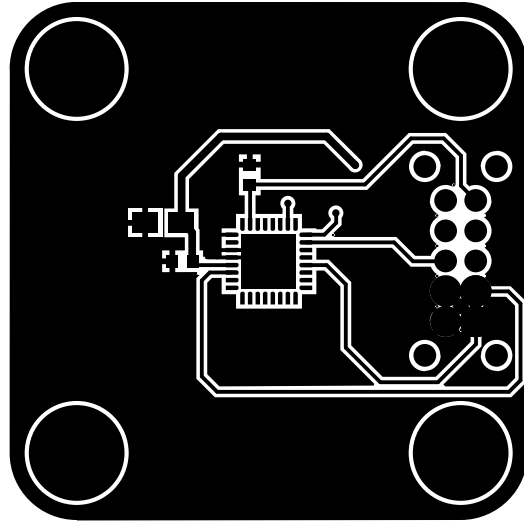
301-505



Primary (Top) Silkscreen

301-505

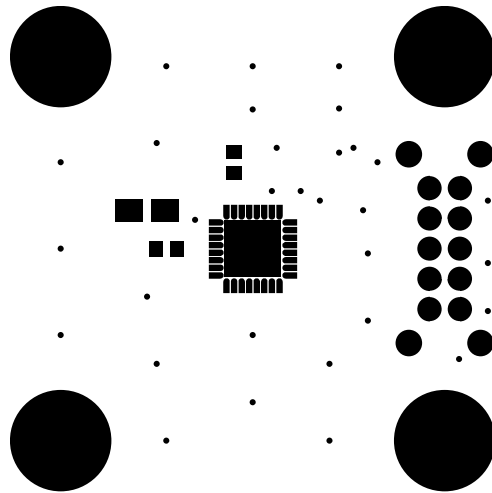
PSS



First (Top) Copper Layer

301 - 505

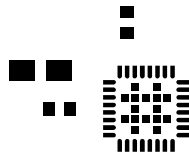
PRI



Primary (Top) Soldermask

301 - 505

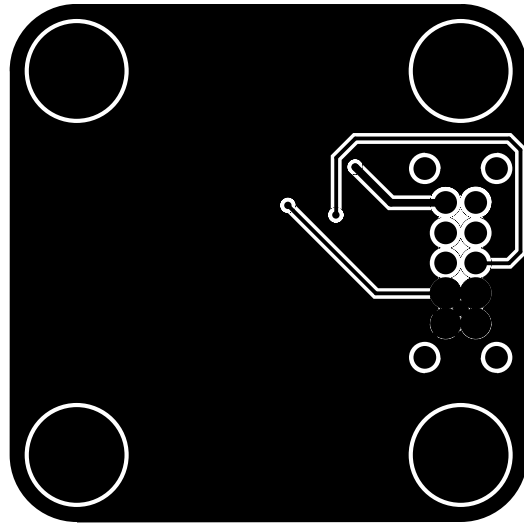
PSM



Primary (Top) Pastemask

301 - 505

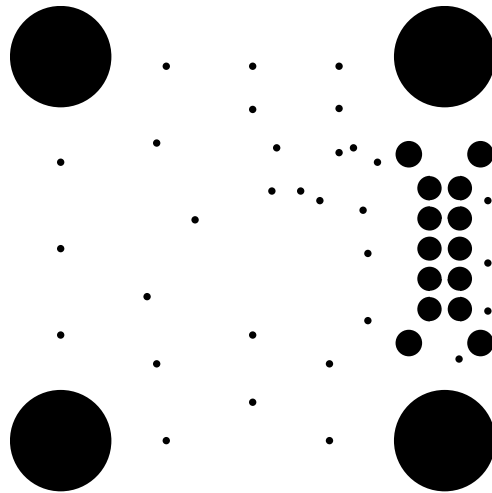
PPM



Second (Bottom) Copper Layer

301 - 505

SEC

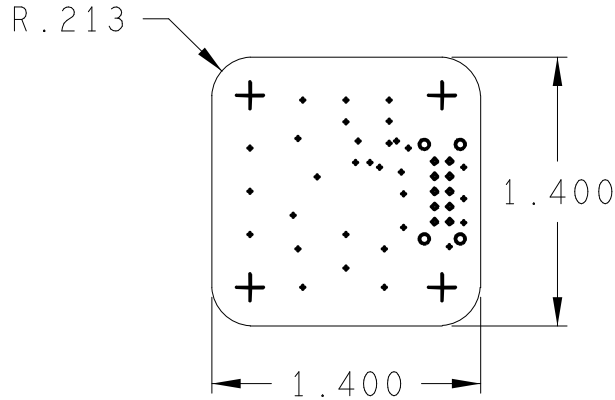


Secondary (Bottom) Soldermask

301 - 505

SSM

PCB VIEWED FROM LAYER 1 (TOP)



301-505
FAB

NOTES :

1. PCB SPEC: PCB SHALL BE MANUFACTURED TO MEET ALL SPECIFICATIONS AND REQUIREMENTS OF IPC-6011 AND IPC-6012, CLASS 2 EXCEPT AS NOTED.
2. MATERIAL: EPOXY GLASS, TYPE FR4, 0.125" THICK, 1 OZ CU PLATE BOTH SIDES, DK 4.3-4.5
3. SOLDER MASK: COLOR GREEN, PHOTOIMAGEABLE TYPE PER IPC SM-840, TYPE B, CLASS 2. APPLY OVER BARE COPPER TO BOTH SIDES OF PCB.
4. FINISH: PREFERRED IS IMMERSION AG, NIG, WHITE TIN. UNFUSED SN/PB IS ACCEPTABLE. HASL (OR HOT OIL) IS LEAST PREFERRED.
5. SILKSCREEN: APPLY WHITE EPOXY INK TO COMPONENT SIDE OF PCB. ADD VENDOR ID AND DATE CODE TO SILKSCREEN TOP.
6. DRILL SIZES: HOLES SIZES IN DRILL LEGEND REPRESENT FINISHED SIZE AFTER PLATING. MIN THICKNESS TO BE 0.0015"
7. PHOTOTOOLS: ON FINISHED PCB'S, COPPER ETCH IS TO BE WITHIN +/- 0.0005" OF PHOTOTOOL DATA.

DRILL CHART			
ALL UNITS ARE IN MILS			
SYMBOL	SIZE	FINISH	QTY
•	10.0	PLATED	31
◆	32.0	PLATED	10
○	35.0	PLATED	4
+	140.0	PLATED	4

					TITLE / TITRE								
					ADXL313Z EVAL BOARD								
		DWN/DESS		DATE		CHK/VER		DATE		APPD/APP		DATE	
		GL		2012-09-20		DR		2012-09-20		DR		2012-09-20	
		A		DWN/DESS				NO. DU DESSIN					
				301-505									
LTR/LET		REVISION		DATE		DWN/DESS		CHK/VER		SCALE/ECHELLE		SHEET FEUILLE	
										1 : 1		1 OF 1	
										INTEMPCO CONTROLS LTD		1 DE 1	
										LES CONTROLES INTEMPCO LTEE			

CE DESSIN ET SES SPECIFICATIONS SONT LA PROPRIETE DE LES CONTROLES INTEMPCO LTEE. IL NE PEUVENT ETRE PRETES, TRANSFERES, REPRODUITS, COPIES OU SERVIR A LA FABRICATION, L'ACHAT OU LA VENTE D'ARTICLES SANS LE CONSENTEMENT ECRIT DE LES CONTROLES INTEMPCO LTEE.

THIS DRAWING AND SPECIFICATIONS HEREIN ARE THE PROPERTY OF INTEMPCO CONTROLS LTD AND MUST NOT BE LOANED OR OTHERWISE TRANSFERRED TO ANY THIRD PARTY OR REPRODUCED, COPIED OR USED IN CONNECTION WITH THE MANUFACTURE PURCHASE OR SALE OF ITEMS WITHOUT WRITTEN CONSENT OF INTEMPCO CONTROLS LTD.