

4

3

2

1

REVISIONS			
REV	DESCRIPTION	DATE	APPROVED
A	INITIAL RELEASE	19AUG20	P. DELCORRO

D

D

C

C

B

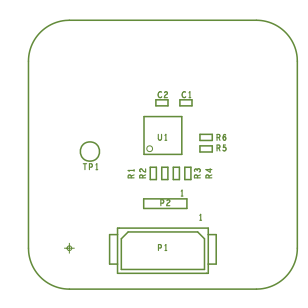
B

A


A

ASSEMBLY NOTES:

1. BOARD ACCEPTABILITY PER ANALOG DEVICES, INC. SPECIFICATION TST00119 (LATEST REVISION).
2. REPAIRS PER IPC-7711/21(LATEST REVISION) ARE ALLOWED.
3. REPAIRS ARE NOT ALLOWED IN SOLDERMASK FREE AREAS ON EITHER SIDE OF THE BOARD.
4. RoHS COMPLIANCE: ASSEMBLY VENDOR SHOULD ASSURE COMPLIANCE WITH LEAD-FREE AND RoHS PCB ASSEMBLY STANDARDS (EU RoHS DIRECTIVE 2002/95/EC).
5. BOARDS TO BE SINGULATED PRIOR SHIPPING TO CUSTOMER.



PRIMARY SIDE

UNLESS OTHERWISE SPECIFIED DIMENSIONS ARE IN INCHES TOLERANCES DECIMALS FRACTIONS ANGLES .XX .010 --1/32 -- 2 .XXX .005 .XXXX .0050	APPROVAL	DATE	 WWM DIVISION 804 WOBURN STREET WILMINGTON, MA 01887			
	TEMPLATE ENGINEER					
MATERIAL	HARDWARE SERVICES	19AUG20	TITLE ASSEMBLY EVAL-ADXL317Z			
	M. VALE					
	HARDWARE SYSTEMS					
FINISH	TEST ENGINEER		SIZE	FSCM NO	DRAWING NUMBER	REV
	COMPONENT ENGINEER	19AUG20				
	M. YAN		C	24355	01-065660	A
	TEST PROCESS					
HARDWARE RELEASE	19AUG20					
DESIGNER						
PTD ENGINEER						
P. DELCORRO	19AUG20					
CHECKER						
DO NOT SCALE DWG			SCALE	1/1		SHEET 1 OF 1

4

3

2

1

SPECIFICATIONS:

ROHS COMPLIANCE NOTE: HOMOGENOUS MATERIALS IN THIS BOARD SHALL BE COMPLIANT THE EU RoHS DIRECTIVE 2002/95/EC

**MATERIALS:** ALL LAMINATES AND BONDING MATERIALS SHOULD BE SELECTED FROM IPC-4101 OR IPC-4103, MINIMUM Tg>170degC, Td>300degC, U.L. RATING OF 94 V-0

**MATERIAL FAMILY:** ISOLA 370HR

**CLADDING:** EXTERNAL LAYERS .5 OZ. COPPER, OVERPLATE TO 1.5 OZ. INTERNAL PLANE LAYERS 1 OZ. COPPER.

NOTE: IF THE LAYER STACKUP CONFLICTS WITH THE ABOVE CLADDING SPECIFICATIONS THEN THE LAYER STACKUP SHALL TAKE PRECEDENCE.

**SOLDER MASK:** SHALL BE LIQUID PHOTOIMAGEABLE (LPI) APPLIED ON BOTH SIDES OVER BARE COPPER OR GOLD AND SHALL MEET IPC-SM-840 (LATEST REV.) CLASS 3. COLOR GREEN.

**SILK SCREEN:** SHALL BE PERMANENT NON-CONDUCTIVE EPOXY INK, COLOR: WHITE SYNTHETIC INKJET PRINTING ALLOWED FOR DENSE BOARDS, COLOR: WHITE

**SURFACE FINISH:** ENIG (ELECTROLESS NICKEL/IMMERSION GOLD) PER IPC-4552 LATEST REVISION

**INTENTIONAL SHORTS:** IF SUPPLIED DATA INCLUDES A FILE "READ\_ME.2", THEN INTENTIONAL NET SHORTS EXIST. CUSTOMER REVIEW AND APPROVAL IS REQUIRED IF SUPPLIED DATA REPORTS ANY CONDITION THAT DOES NOT MATCH "READ\_ME.2" FILE PROVIDED.

**TEST REQUIREMENTS:** 100% NETLIST ELECTRICAL VERIFICATION USING CUSTOMER SUPPLIED IPC-D-356 NETLIST FOR OPENS AND SHORTS WHEN "GERBER DATA" IS PROVIDED. THIS VERIFICATION ALSO REQUIRED FOR "ODB++" DATA PER EMBEDDED NETLIST.

REVISIONS			
REV	DESCRIPTION	DATE	APPROVED
A	INITIAL RELEASE	19AUG20	P. DELCORRO

REQUIREMENTS:

- REFER TO IPC-6010 SERIES (LATEST REV.), CLASS 2 FOR FABRICATION UNLESS OTHERWISE SPECIFIED.
- ACCEPTABILITY PER ANALOG DEVICES, INC. SPECIFICATION TST00115, (LATEST REVISION.)
- MODIFICATIONS TO THE ARTWORK ARE NOT ALLOWED WITHOUT WRITTEN AUTHORIZATION.
- HOLE PATTERN TOLERANCES FOR UNDIMENSIONED HOLES SHALL BE A DIAMETER OF 0.005 INCHES FROM THEIR TRUE POSITION.
- PLATED HOLE WALL THICKNESS SHALL NOT BE LESS THAN 0.001 INCH MINIMUM AVERAGE, WITH NO READING LESS THAN .0008 BY CROSS SECTION.
- HOLE DIAMETERS APPLY AFTER PLATING.
- FINISHED CONDUCTOR WIDTHS SHALL NOT BE REDUCED FROM THE NOMINAL INDICATED ON THE MASTER PATTERN, BY MORE THAN THE CONDUCTOR THICKNESS.
- MINIMUM DESIGN LINE WIDTH IS .008 INCH.
- MINIMUM DESIGN SPACING IS .005 INCH.
- ~~NON-FUNCTIONAL PAD REMOVAL FROM INNER SIGNAL LAYERS MAY BE PERFORMED AFTER CUSTOMER APPROVAL.~~
- IF PAD SIZES PROVIDED ARE NOT LARGE ENOUGH TO MAINTAIN ANNULAR RING REQUIREMENT, MFR. MAY REQUEST APPROVAL TO TEAR DROP PADS TO MAINTAIN ANNULAR RING. (AT PAD TO TRACE INTERSECTION ONLY AND ELECTRICAL INTEGRITY MUST BE MAINTAINED.)
- THIEVING MAY BE ADDED TO COMPENSATE FOR LOW COPPER DENSITY AREAS ON THIS DESIGN ONLY AFTER REVIEW AND APPROVAL FROM THE CUSTOMER:
  - A. THIEVING TO CARD EDGE, FIDUCIALS, NON-PLATED THROUGH HOLES, ALL OTHER FEATURES TO BE 0.200 INCH MINIMUM.
  - B. THERE SHALL BE NO THIEVING IN ANY AREAS FREE OF SOLDER MASK OR INTERNAL COPPER PLANES.
- MFR. TO LEGIBLY ETCH OR STAMP/SCREEN WITH PERMANENT NON-CONDUCTIVE INK ON SECONDARY SIDE IN A CLEAR AREA UNLESS OTHERWISE INDICATED:
  - A. U.L. CODE-FLAMMABILITY RATING
  - B. DATE CODE (STAMP)
  - C. LOT NUMBER
  - D. MFR LOGO
  - E. SUCCESSFUL ELECTRICAL TEST.
- REPAIRS PER IPC-7711/21 (LATEST REV.) ARE ALLOWED.
- BOARDS TO BE SHIPPED IN ARRAYS.

2 LAYER STACKUP



HOLE TOLERANCE

UNLESS SPECIFIED  
 PLATED: +/-3MILS  
 NON PLATED: +/-2MILS

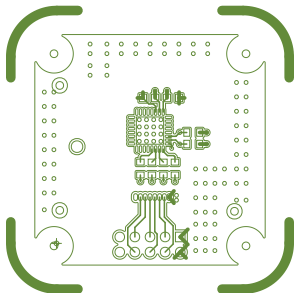
DRILL CHART: TOP to BOTTOM				
ALL UNITS ARE IN MILS				
FIGURE	SIZE	PLATED	QTY	TOLERANCE/NOTES
+	10.0	PLATED	109	DIA MAX
△	15.0	PLATED	8	
◇	30.0	PLATED	10	
□	40.0	PLATED	1	
A	140.0	NON-PLATED	4	

PRIMARY SIDE

UNLESS OTHERWISE SPECIFIED DIMENSIONS ARE IN INCHES	APPROVAL	DATE	<div style="display: inline-block; vertical-align: middle; text-align: right; margin-left: 10px;"> <p>WWM DIVISION 804 WOBURN STREET WILMINGTON, MA 01887</p> </div>			
	TEMPLATE ENGINEER					
TOLERANCES	HARDWARE SERVICES	19AUG20	TITLE FABRICATION EVAL-ADXL317Z			
DECIMALS FRACTIONS ANGLES	M. VALE					
.XX .010 .1/32 .2	HARDWARE SYSTEMS		MATERIAL			
.XXX .005						
.XXXX .0050	TEST ENGINEER		FINISH			
	COMPONENT ENGINEER	19AUG20				
	M. YAN		DO NOT SCALE DWG			
	TEST PROCESS					
	HARDWARE RELEASE	19AUG20	SIZE	FSCM NO	DRAWING NUMBER	REV
	K. JABATAN		C	24355	09-065660	A
	DESIGNER		SCALE 1/1			
	M. VICEDO	19AUG20	SHEET 1 OF 1			
	PTD ENGINEER					
	P. DELCORRO	19AUG20				
	CHECKER					

ART FILM - l1\_primary

L1 PRIMARY  
08-065660-01  
REV A

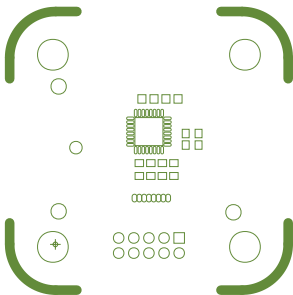


ART FILM - l1\_primary

SOLDERMASK PRIMARY

08-065660-04

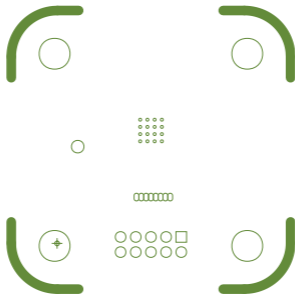
REV A



SOLDERMASK SECONDARY

08-065660-05

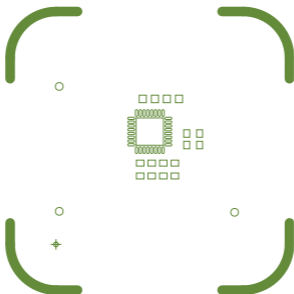
REV A



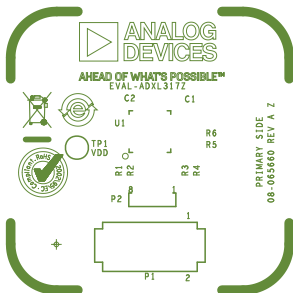
PASTEMASK PRIMARY

08-065660-06

REV A

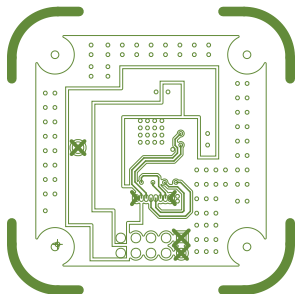


SILKSCREEN PRIMARY  
08-065660-03  
REV A



ART FILM - 12\_secondary

L2 SECONDARY  
08-065660-02  
REV A



ART FILM - 12\_secondary