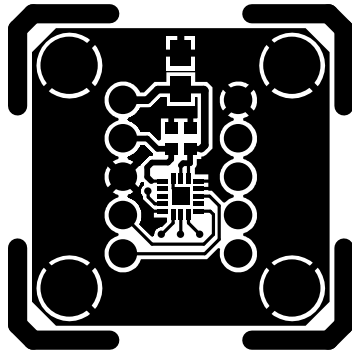
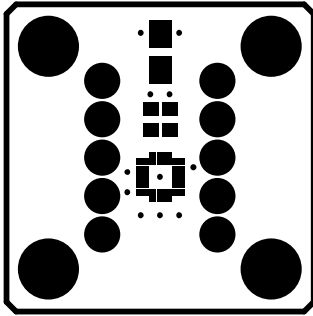


ADXL344Z

SILKSCREEN LAYER 1 (TOP)

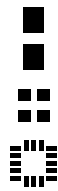


ADXL344Z
LAYER 1 (TOP)



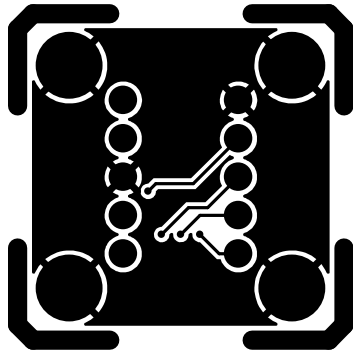
ADXL344Z

SOLDERMASK LAYER 1 (TOP)

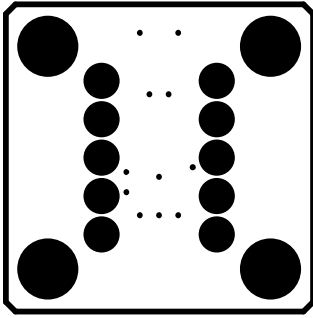


ADXL344Z

PASTEMASK LAYER 1 (TOP)



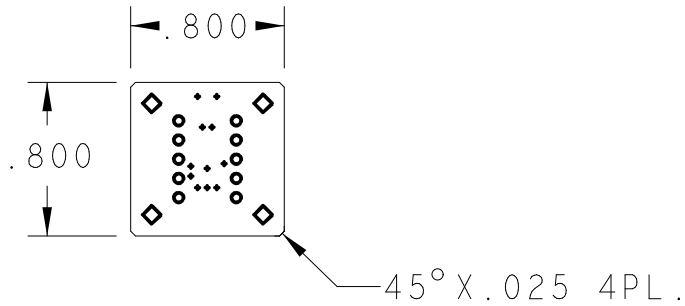
ADXL345
LAYER 5 (BOTTOM)



ADXL344Σ

SOLDERMASK LAYER 5 (BOTTOM)

PCB VIEWED FROM LAYER 1 (TOP)



NOTES :

1. PCB SPEC: PCB SHALL BE MANUFACTURED TO MEET ALL SPECIFICATIONS AND REQUIREMENTS OF IPC-6011 AND IPC-6012, CLASS 2 EXCEPT AS NOTED.
2. MATERIAL: EPOXY GLASS, TYPE FR4, 0.062" THICK, 1 OZ CU PLATE BOTH SIDES. DK 4.3-4.5
3. SOLDER MASK: COLOR GREEN, PHOTOIMAGEABLE TYPE PER IPC SM-840, TYPE B, CLASS 2. APPLY OVER BARE COPPER TO BOTH SIDES OF PCB. PREFERRED IS IMMERSION AG, NIG, WHITE TIN. UNFUSED SN/PB IS ACCEPTABLE.
4. FINISH: HASL (OR HOT OIL) IS LEAST PREFERRED.
5. SILKSCREEN: APPLY WHITE EPOXY INK TO COMPONENT SIDE OF PCB. ADD VENDOR ID AND DATE CODE TO SILKSCREEN TOP.
6. DRILL SIZES: HOLES SIZES IN DRILL LEGEND REPRESENT FINISHED SIZE AFTER PLATING. MIN THICKNESS TO BE 0.0015"
7. PHOTOTOOLS: ON FINISHED PCB'S, COPPER ETCH IS TO BE WITHIN +/- 0.0005" OF PHOTOTOOL DATA.

DRILL CHART: TOP to BOTTOM

ALL UNITS ARE IN MILS			
SYMBOL	SIZE	FINISH	QTY
•	10	PLATED	11
○	43	PLATED	10
◇	120	PLATED	4

					TITLE / TITRE					ADXL344Z						
					DWN/DESS		DATE		CHK/VER		DATE		APPD/APP		DATE	
					A		DWG NO.		NO. DU DESSIN		301-479					
					SCALE/ECHELLE		INTEMPCO CONTROLS LTD					SHEET		1 OF 1		
							LES CONTROLES INTEMPCO LTEE					FEUILLE		DE		
LTR/LET	REVISION	DATE	DWN/DESS	CHK/VER												

CE DESSIN ET SES SPECIFICATIONS SONT LA PROPRIETE DE LES CONTROLES INTEMPCO LTEE. IL NE PEUVENT ETRE PRETES, TRANSFERES, REPRODUITS, COPIES OU SERVIR A LA FABRICATION, L'ACHAT OU LA VENTE D'ARTICLES SANS LE CONSENTEMENT ECRIT DE LES CONTROLES INTEMPCO LTEE. THIS DRAWING AND SPECIFICATIONS HEREIN ARE THE PROPERTY OF INTEMPCO CONTROLS LTD AND MUST NOT BE LOANED OR OTHERWISE TRANSFERRED TO ANY THIRD PARTY OR REPRODUCED, COPIED OR USED IN CONNECTION WITH THE MANUFACTURE PURCHASE OR SALE OF ITEMS WITHOUT WRITTEN CONSENT OF INTEMPCO CONTROLS LTD.