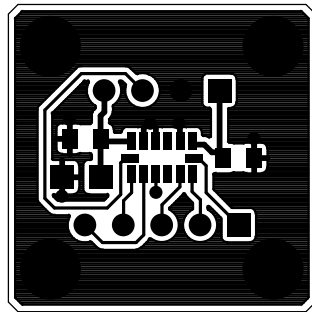


301-350

PSS

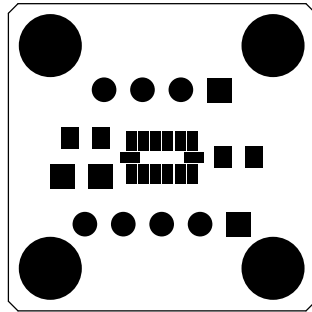
Primary (Top) Silkscreen



301-350

PRI

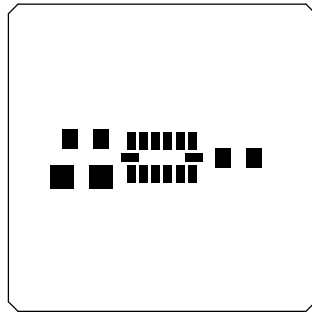
First (Top) Copper Layer



301-350

PSM

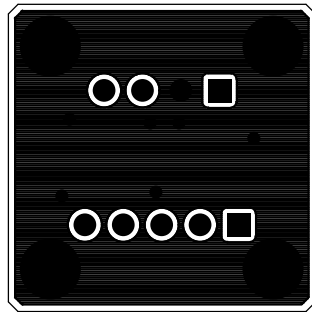
Primary (Top) Soldermask



301-350

PPM

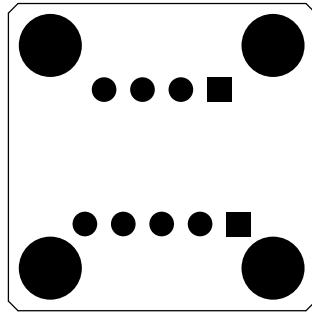
Primary (Top) Pastemask



301 – 350

SEC

Second (Bottom) Copper Layer



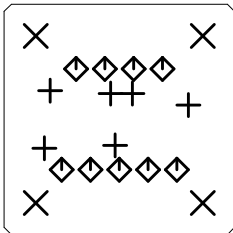
301-350

SSM

Secondary (Bottom) Soldermask

SPECIFICATIONS:

- MATERIAL:** - G10 OR FR-4, GLASS EPOXY .090", 1 OUNCE OF COPPER.
PROCESS: - SMOBC.
 - MINIMUM TRACES 0.012",MINIMUM SPACING 0.012"
 - ALL HOLES ARE PLATED WITH 1 OUNCE OF COPPER.
 - MAKE SURE THE ASPECT RATIO MEET YOUR CAPABILITY.
 - DIMENSIONS FOR DRILLING ARE GIVEN AFTER PLATING.
 - DRILLING TOLERANCES ARE +/-0.003"
SOLDER MASK: - TYPE UV OR PHOTO IMAGEABLE OR EQUIVALENT.
SILKSCREEN: - EPOXY ENAMEL WHITE.
DRILLING: - USE 301-350.drl
DATA: - GERBER & DRILLING FILE ARE SUPPLIED BY:
 INTEMPCO CONTROLS LTD



301-350
 FAB

| SIZE | QTY | SYM | PLATED | TOL |
|------|-----|-----|--------|---------------|
| 20 | 6 | + | YES | +0.003/-0.012 |
| 116 | 4 | X | YES | +/-0.003 |
| 35 | 9 | ◇ | YES | +/-0.0 |