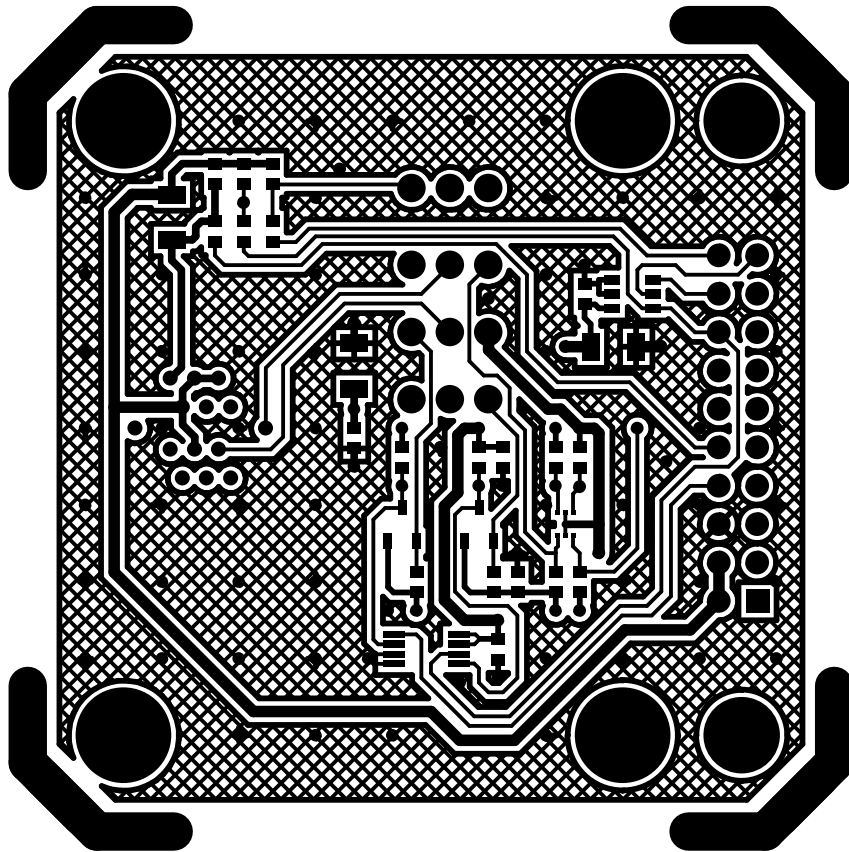
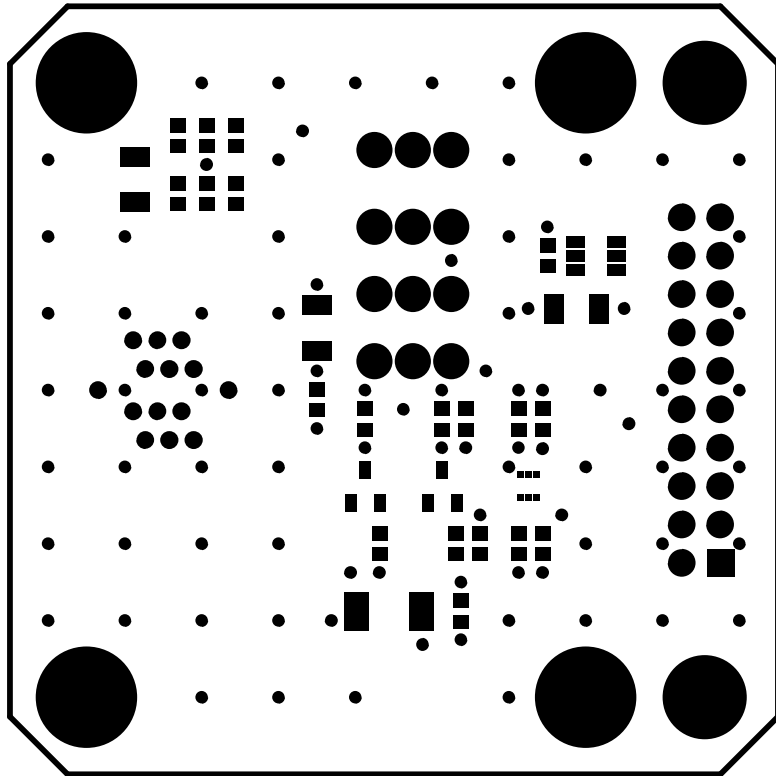


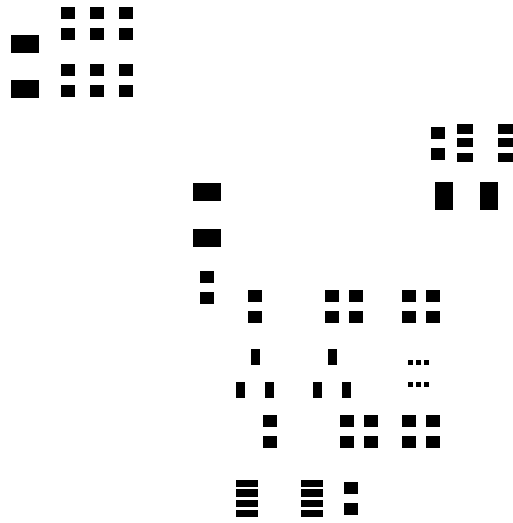
ADXL343Z-S
SILKSCREEN LAYER 1 (TOP)



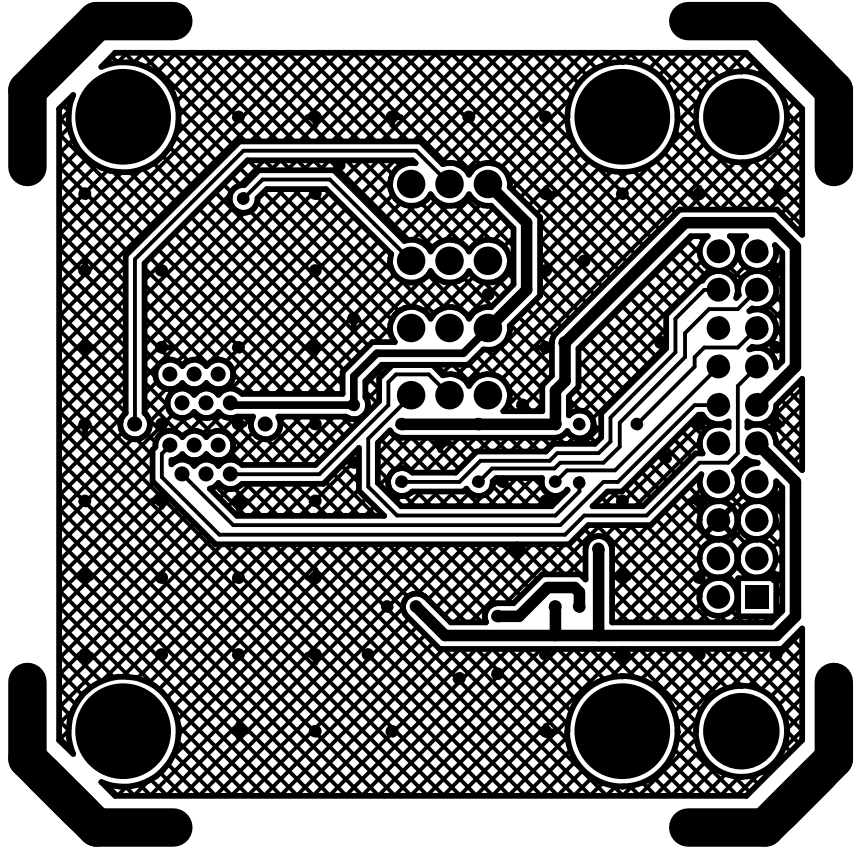
XL345 SENSOR BOARD
LAYER 1 (TOP)



XL345 SENSOR BOARD
SOLDERMASK LAYER 1 (TOP)

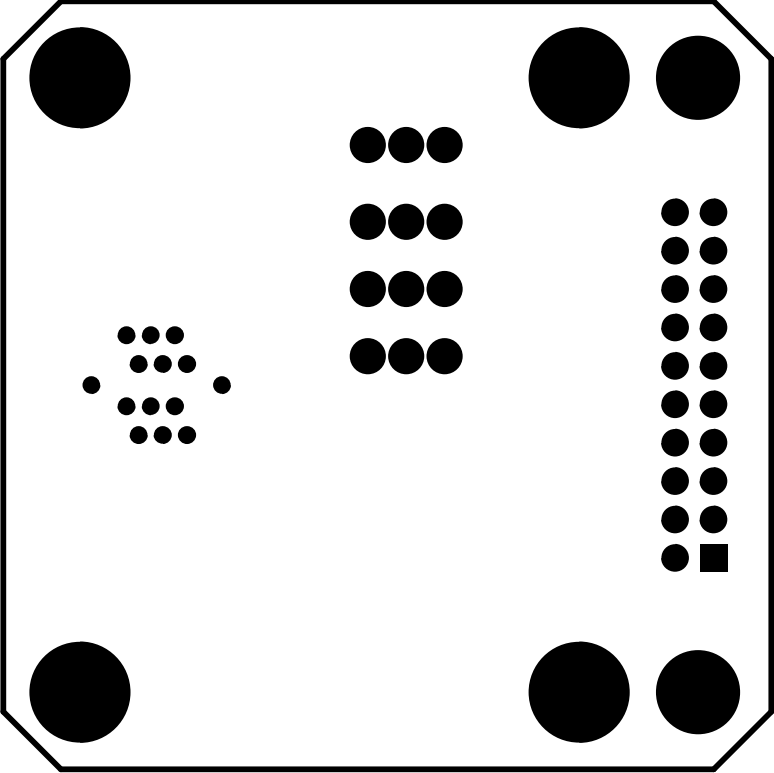


XL345 SENSOR BOARD
PASTEMASK LAYER 1 (TOP)

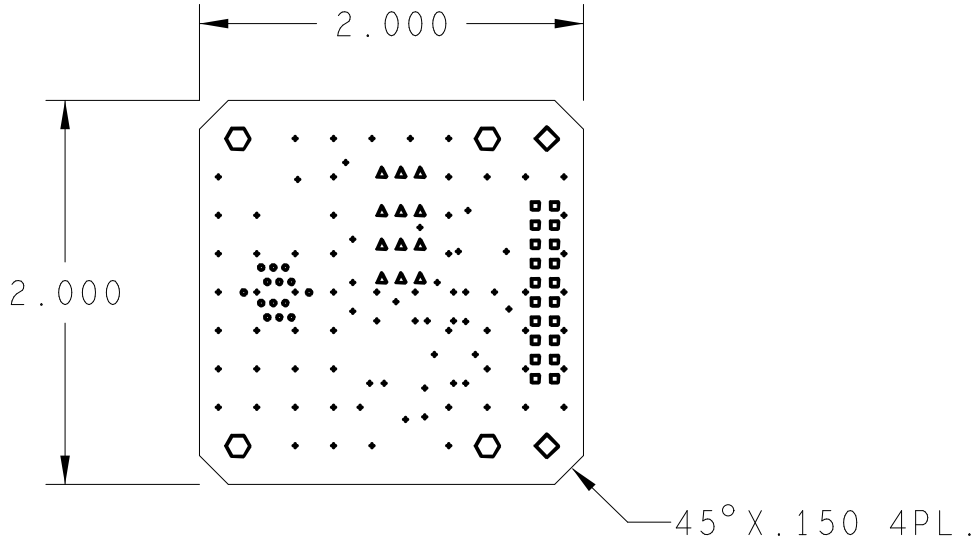


XL342 SENSOR BOARD
LAYER 5 (BOTTOM)

SOLDERMASK LAYER 2 (BOTTOM)
XL342 SENSOR BOARD



PCB VIEWED FROM LAYER 1 (TOP)



NOTES :

1. PCB SPEC: PCB SHALL BE MANUFACTURED TO MEET ALL SPECIFICATIONS AND REQUIREMENTS OF IPC-6011 AND IPC-6012, CLASS 2 EXCEPT AS NOTED.
2. MATERIAL: EPOXY GLASS, TYPE FR4, 0.062" THICK, 1 OZ CU PLATE BOTH SIDES. DK 4.3-4.5
3. SOLDER MASK: COLOR GREEN, PHOTOIMAGEABLE TYPE PER IPC SM-840, TYPE B, CLASS 2. APPLY OVER BARE COPPER TO BOTH SIDES OF PCB.
4. FINISH: PREFERRED IS IMMERSION AG. NIG. WHITE TIN. UNFUSED SN/PB IS ACCEPTABLE. HASL (OR HOT OIL) IS LEAST PREFERRED.
5. SILKSCREEN: APPLY WHITE EPOXY INK TO COMPONENT SIDE OF PCB. ADD VENDOR ID AND DATE CODE TO SILKSCREEN TOP.
6. DRILL SIZES: HOLES SIZES IN DRILL LEGEND REPRESENT FINISHED SIZE AFTER PLATING. MIN THICKNESS TO BE 0.0015".
7. PHOTOTOOLS: ON FINISHED PCB'S, COPPER ETCH IS TO BE WITHIN +/- 0.0005" OF PHOTOTOOL DATA.
8. PCB ROUTING: PCB IS TO BE ROUTED USING SUPPLIED FILE XL345_PANEL.ROU. TOOL SIZE IS 0.0625".

DRILL CHART: TOP to BOTTOM

ALL UNITS ARE IN MILS			
SYMBOL	SIZE	FINISH	QTY
◆	20	PLATED	87
●	25	PLATED	14
■	38	PLATED	20
▲	43	PLATED	12
◇	109	PLATED	2
⬡	125	PLATED	4

TITLE / TITRE				
XL345 SENSOR PCB				
DWN/DESS	DATE	CHK/VER	DATE	APPD/APP DATE
A	DWG NO. NO. DU DESSIN	XL345 SENSOR BOARD		
LTR/LET	REVISION	DATE	DWN/DESS	CHK/VER
SCALE/ECHELLE		INTEMPCO CONTROLS LTD LES CONTROLES INTEMPCO LTEE	SHEET FEUILLE	1 OF 1 DE

CE DESSIN ET SES SPECIFICATIONS SONT LA PROPRIETE DE LES CONTROLES INTEMPCO LTEE. IL NE PEUVENT ETRE PRETES, TRANSFERES, REPRODUITS, COPIES OU SERVIR A LA FABRICATION, L'ACHAT OU LA VENTE D'ARTICLES SANS LE CONSENTEMENT ECRIT DE LES CONTROLES INTEMPCO LTEE.

THIS DRAWING AND SPECIFICATIONS HEREIN ARE THE PROPERTY OF INTEMPCO CONTROLS LTD AND MUST NOT BE LOANED OR OTHERWISE TRANSFERRED TO ANY THIRD PARTY OR REPRODUCED, COPIED OR USED IN CONNECTION WITH THE MANUFACTURE PURCHASE OR SALE OF ITEMS WITHOUT WRITTEN CONSENT OF INTEMPCO CONTROLS LTD.