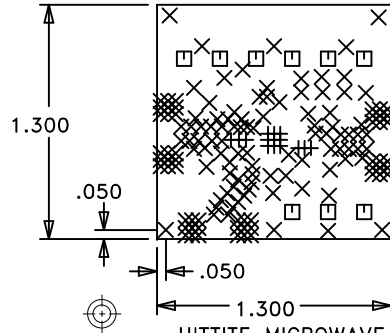


DO NOT SCALE PRINT

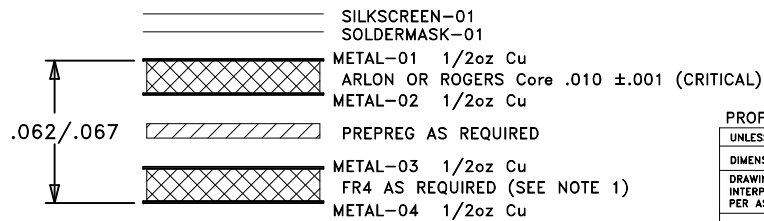
REVISION				
ZONE	LTR	DESCRIPTION	DATE	APPROVED
	1	ENGINEERING RELEASE	7/14/10	V. LY



HITTITE MICROWAVE
PCB #131349-1
DRILL DRAWING

SIZE	QTY	SYM	PLATED	TOL
10	15	+	YES	+/-3
14	146	X	YES	+/-3
63	9	□	YES	+/-3

LAYER	DESCRIPTION
1	RF/GND PLANE
2	GND PLANE
3	SIG/GND PLANE
4	BOTTOM GND PLANE



LAYER STACKUP

PROPRIETARY TO HITTITE MICROWAVE CORPORATION

UNLESS OTHERWISE SPECIFIED:

DIMENSIONS ARE IN INCHES (MM)

DRAWING PRACTICES PER ASME Y14.100
INTERPRET DIMENSIONS & TOLERANCES
PER ASME Y14.5-2009

TOLERANCES:

.XX	+/- 0.010
.XXX	+/- 0.005
.XXXX	+/- 0.002
ANGLES	+/- .5 DEG

DWN BY:
V. LY 07/06/2010

ENGINEER:
ONUR ARKUT



HITTITE MICROWAVE CORPORATION
20 Alpha Road Chelmsford, MA 01824

TITLE
PCB, SINGLE ENDED EVAL
HMC5803CLP4E

SIZE	CODE ID NO.	DRAWING NO.	REV
A	1CN88	131349	1

SCALE: NONE WT SHEET 1 of 1

NOTES:
UNLESS OTHERWISE SPECIFIED:

1. MATERIAL: MULTILAYER. OVERALL STACKUP AS SHOWN. TYPE ROGERS 4350 OR ARLON 25FR, HALF OUNCE COPPER BOTH SIDES, FR4 TO BE USED AS FILLER TO MEET CRITICAL OVERALL THICKNESS.
2. FINISH: GOLD PLATE PER ASTM B-488, TYPE III, CODE A, 8 TO 40 MICROINCHES, OVER NICKEL PER QQ-N-290, 100 MICROINCHES MINIMUM.
3. PLATED THRU HOLES: .001 MINIMUM WALL THICKNESS.
4. HOLE SIZES AND POSITIONS PER ARTWORK AND/OR DRILL FILE.
5. ALL HOLES TO BE LOCATED WITHIN ± 0.003 OF THE CENTER OF THE PAD OR OTHER TRUE POSITION.
6. FRONT TO BACK REGISTRATION ± 0.003 MAX.
7. BOARD WARPAGE: < 0.010 PER LINEAR INCH.
8. SILKSCREEN TOPSIDE ONLY WITH WHITE EPOXY INK.
9. SOLDERMASK: LPI SOLDERMASK TOP SIDE. COLOR: GREEN REGISTRATION: ± 0.004 MAX.
10. "SIZE" IN DRILL LEGEND IS IN MILS AND REFERS TO FINISHED HOLE SIZE.
11. MANUFACTURE PER IPC-6012, CLASS 2.

SPECIAL REQUIREMENTS:

12. METAL-01 CRITICAL LINE WIDTH = $.016 \pm 0.001$ ADJUST PROCESS TO ACHIEVE WIDTH.

VENDOR NOTES:

13. VENDOR MAY ADD E-TEST STAMP TO PCB. VENDOR SHALL NOT ADD NAME, LOGO, DATE CODE, OR ANY OTHER MARKING TO ANY VISIBLE LAYER.
14. BOARDS MUST PASS VISUAL INSPECTION PER IPC-A-600, CLASS 2.