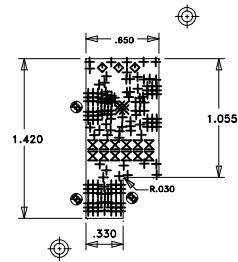
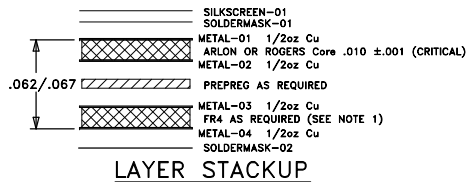


REVISION				
ZONE	LTR	DESCRIPTION	DATE	APPROVED
	1	ENGINEERING RELEASE	01/29/13	Y.AYDIN
	2	SOME PARTS REMOVED	06/26/13	Y.AYDIN



HITTITE MICROWAVE
600-00733-00-2
DRILL DRAWING
⊙ DENOTES EDGE PLATING LOCATION

SIZE	QTY	SYM	PLATED	TOL
10	5	×	YES	+/-3
14	154	+	YES	+/-3
63	3	◇	YES	+/-3
40	12	⊗	YES	+/-3



NOTES:

UNLESS OTHERWISE SPECIFIED:


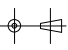
- MATERIAL: MULTILAYER. OVERALL STACKUP AS SHOWN. TYPE ARLON 25FR OR ROGERS 4350B, HALF OUNCE COPPER BOTH SIDES, FR4 TO BE USED AS FILLER TO MEET CRITICAL OVERALL THICKNESS.
- FINISH: GOLD PLATE PER ASTM B-488, TYPE III, CODE A, 8 TO 40 MICROINCHES, OVER NICKEL PER QQ-N-290, 100 MICROINCHES MINIMUM.
- PLATED THRU HOLES: .001 MINIMUM WALL THICKNESS.
- HOLE SIZES AND POSITIONS PER ARTWORK AND/OR DRILL FILE.
- ALL HOLES TO BE LOCATED WITHIN ±.003 OF THE CENTER OF THE PAD OR OTHER TRUE POSITION.
- FRONT TO BACK REGISTRATION ±.003 MAX.
- BOARD WARPAGE: <.010 PER LINEAR INCH.
- SILKSCREEN TOP SIDE ONLY WITH WHITE EPOXY INK.
- SOLDERMASK: LPI SOLDERMASK BOTH SIDES. COLOR: GREEN REGISTRATION: ±.004 MAX.
- "SIZE" IN DRILL LEGEND IS IN MILS AND REFERS TO FINISHED HOLE SIZE.
- MANUFACTURE PER IPC-6012 CLASS 2.
- PLATING THICKNESS .002 ±.0005 FOR MET-01 AND MET-04.
- ARTWORK IS 1:1 VENDOR TO ADJUST FOR ETCH FACTOR.

SPECIAL REQUIREMENTS:

- METAL-01: CRITICAL LINE WIDTH = .016 ±.001 ON METAL-01. ADJUST PROCESS TO ACHIEVE WIDTH.
- EDGE PLATING MUST CONNECT ALL FOUR METAL LAYERS.

VENDOR NOTES:

- VENDOR MAY ADD E-TEST STAMP TO PCB. VENDOR SHALL NOT ADD NAME, LOGO, DATE CODE, UL LISTING OR ANY OTHER MARKING TO ANY VISIBLE LAYER.
- BOARDS MUST PASS VISUAL INSPECTION PER IPC-A-600 CLASS 2.
- ANY CHANGES TO METAL LAYERS OR STACKUP MUST BE APPROVED BY HITTITE MICROWAVE. THIS INCLUDES CHANGES MADE FOR IMPEDANCE ADJUSTMENTS.

UNLESS OTHERWISE SPECIFIED:		DRAWN BY		DATE DRN		 <div>HITTITE MICROWAVE CORPORATION 20 Alpha Road Chelmsford, MA 01824</div>				
DIMENSIONS ARE IN INCHES [mm]		Y.AYDIN CHECKED BY		01/29/13						
DRAWING PRACTICES PER ASME Y14.100						TITLE				
INTERPRET DIMENSIONS & TOLERANCES PER ASME Y14.5-2009				ENGINEER S.TOKMAK 01/29/13		PCB, EVAL HMC7240ALP3E				
TOLERANCES:				THIRD ANGLE PROJECTION 		SIZE		CODE ID NO.	DWG NO.	REV
.XX ± .01 .XXX ± .005 .XXXX ± .0020 ANGLES ± .5 DEG.						B		1CN88	600-00733-00	2
DO NOT SCALE DRAWING						SCALE: 1:1		WT:	SHEET: 1 OF 1	

NEXT ASSY	XXXXXX USED ON
-----------	-------------------