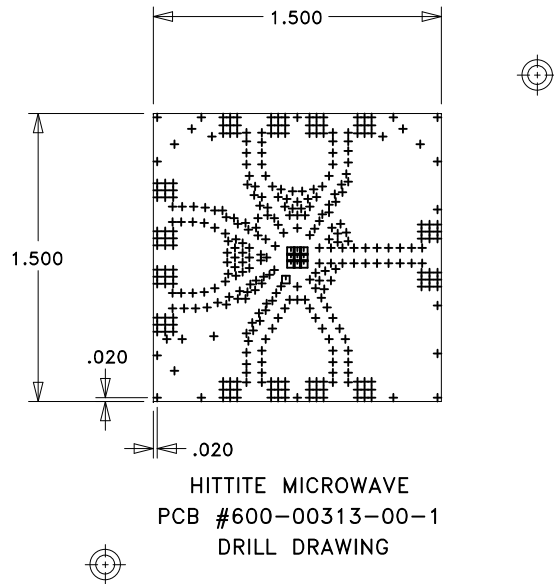
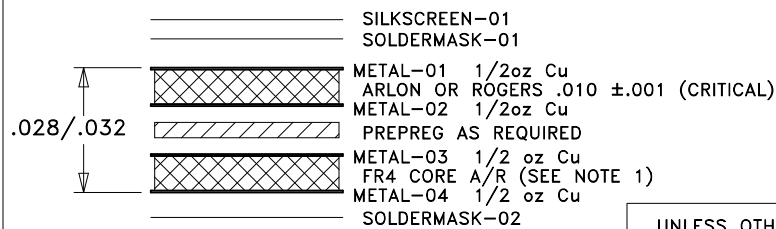


REVISION			
LTR	DESCRIPTION	DATE	APPROVED
1	ENGINEERING RELEASE	11/04/11	M.LYONS



SIZE	QTY	SYM	PLATED	TOL
10	10	□	YES	+/-3
14	356	+	YES	+/-3



STACKUP

UNLESS OTHERWISE SPECIFIED:	
DIMENSIONS ARE IN INCHES [mm]	
DRAWING PRACTICES PER ASME Y14.100	
INTERPRET DIMENSIONS & TOLERANCES PER ASME Y14.5-2009	
TOLERANCES:	
.XX	± .01
.XXX	± .005
.XXXX	± .0020
ANGLES	± .5 DEG.

DRAWN BY M.LYONS	DATE DRN 10/19/11
CHECKED BY	
ENGINEER S. KILINC	
THIRD ANGLE PROJECTION	
DO NOT SCALE DRAWING	

PROPRIETARY TO HITTITE MICROWAVE CORPORATION			
HITTITE MICROWAVE CORPORATION 20 Alpha Road Chelmsford, MA 01824			
TITLE PCB, EVAL			
SIZE A	CODE ID NO. 1CN88	DWG NO. 600-00313-00	REV 1
SCALE: 1:1		WT:	SHEET: 1 OF 1

NOTES:

UNLESS OTHERWISE SPECIFIED:

- MATERIAL: MULTILAYER. OVERALL STACKUP AS SHOWN. TYPE ROGERS 4350 OR ARLON 25FR, HALF OUNCE COPPER BOTH SIDES. FR4 TO BE USED AS FILLER TO MEET CRITICAL OVERALL THICKNESS.
- FINISH: GOLD PLATE PER ASTM B-488, TYPE III, CODE A, 8 TO 40 MICROINCHES, OVER NICKEL PER QQ-N-290, 100 MICROINCHES MINIMUM.
- PLATED THRU HOLES: .001 MINIMUM WALL THICKNESS.
- HOLE SIZES AND POSITIONS PER ARTWORK AND/OR DRILL FILE.
- ALL HOLES TO BE LOCATED WITHIN ±.003 OF THE CENTER OF THE PAD OR OTHER TRUE POSITION.
- FRONT TO BACK REGISTRATION ±.003 MAX.
- BOARD WARPAGE: <.010 PER LINEAR INCH.
- SILKSCREEN TOP SIDE ONLY WITH WHITE EPOXY INK.
- SOLDERMASK: LPI SOLDERMASK BOTH SIDES. COLOR: GREEN REGISTRATION: ±.004 MAX.
- "SIZE" IN DRILL LEGEND IS IN MILS AND REFERS TO FINISHED HOLE SIZE.
- MANUFACTURE PER IPC-6012 CLASS 2.
- PLATING THICKNESS .002 ±.0005 FOR METAL-01 AND METAL-04.
- ARTWORK IS 1:1. VENDOR TO ADJUST FOR ETCH FACTOR.

SPECIAL REQUIREMENTS:

- CRITICAL LINE WIDTH = .016 ±.001 ON METAL-01. ADJUST PROCESS TO ACHIEVE WIDTH.

VENDOR NOTES:

- VENDOR MAY ADD E-TEST STAMP TO PCB. VENDOR SHALL NOT ADD NAME, LOGO, DATE CODE, UL LISTING OR ANY OTHER MARKING TO ANY VISIBLE LAYER.
- BOARDS MUST PASS VISUAL INSPECTION PER IPC-A-600 CLASS 2.