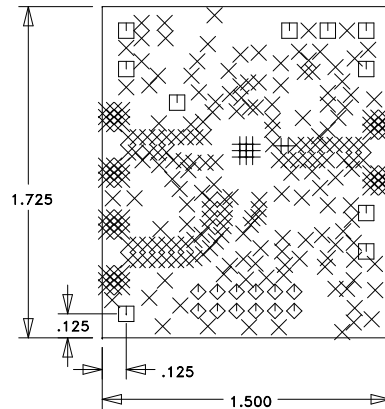


REVISION			
LTR	DESCRIPTION	DATE	APPROVED
1	ENGINEERING RELEASE	08/20/13	Y.AYDIN



HITTITE MICROWAVE
600-00932-00-1
FABRICATION

SIZE	QTY	SYM	PLATED	TOL
10	11	+	YES	+/-3
14	241	X	YES	+/-3
40	12	◇	YES	+/-3
63	10	□	YES	+/-3

NOTES:

UNLESS OTHERWISE SPECIFIED:

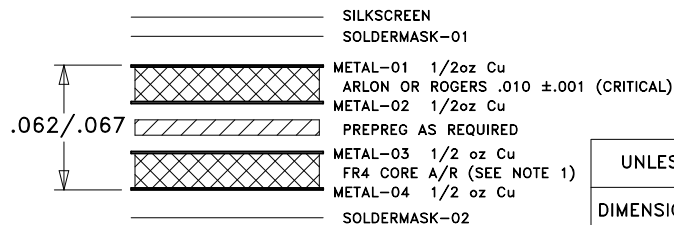
1. MATERIAL: DOUBLE SIDED. OVERALL STACKUP AS SHOWN. TYPE ROGERS 4350B OR ARLON 25FR, HALF OUNCE COPPER BOTH SIDES. FR4 TO BE USED AS FILLER TO MEET CRITICAL OVERALL THICKNESS.
2. FINISH: GOLD PLATE PER ASTM B-488, TYPE III, CODE A, 8 TO 40 MICROINCHES, OVER NICKEL PER QQ-N-290, 100 MICROINCHES MINIMUM.
3. PLATED THRU HOLES: .001 MINIMUM WALL THICKNESS.
4. HOLE SIZES AND POSITIONS PER ARTWORK AND/OR DRILL FILE.
5. ALL HOLES TO BE LOCATED WITHIN $\pm .003$ OF THE CENTER OF THE PAD OR OTHER TRUE POSITION.
6. FRONT TO BACK REGISTRATION $\pm .003$ MAX.
7. BOARD WARPAGE: $< .010$ PER LINEAR INCH.
8. SILKSCREEN TOP SIDE ONLY WITH WHITE EPOXY INK.
9. SOLDERMASK: LPI SOLDERMASK BOTH SIDES. COLOR: GREEN REGISTRATION: $\pm .004$ MAX.
10. "SIZE" IN DRILL LEGEND IS IN MILS AND REFERS TO FINISHED HOLE SIZE.
11. MANUFACTURE PER IPC-6012 CLASS 2.
12. PLATING THICKNESS $.002 \pm .0005$ FOR METAL-01 AND METAL-04.
13. ARTWORK IS 1:1. VENDOR TO ADJUST FOR ETCH FACTOR.

SPECIAL REQUIREMENTS:

14. CRITICAL LINE WIDTH = $.016 \pm .001$ ON METAL-01. ADJUST PROCESS TO ACHIEVE WIDTH.

VENDOR NOTES:

15. VENDOR MAY ADD E-TEST STAMP TO PCB. VENDOR SHALL NOT ADD NAME, LOGO, DATE CODE, UL LISTING OR ANY OTHER MARKING TO ANY VISIBLE LAYER.
16. BOARDS MUST PASS VISUAL INSPECTION PER IPC-A-600 CLASS 2.



STACKUP

UNLESS OTHERWISE SPECIFIED: DIMENSIONS ARE IN INCHES [mm] DRAWING PRACTICES PER ASME Y14.100 INTERPRET DIMENSIONS & TOLERANCES PER ASME Y14.5-2009 TOLERANCES: .XX $\pm .01$.XXX $\pm .005$.XXXX $\pm .0020$ ANGLES $\pm .5$ DEG.	DRAWN BY YUSUF AYDIN	DATE DRN 08/20/13
	CHECKED BY	
	ENGINEER SAVAS TOKMAK	
	THIRD ANGLE PROJECTION	
DO NOT SCALE DRAWING		

PROPRIETARY TO HITTITE MICROWAVE CORPORATION



HITTITE MICROWAVE CORPORATION
20 Alpha Road
Chelmsford, MA 01824

TITLE PCB, EVAL CUSTOMER			
SIZE A	CODE ID NO. 1CN88	DWG NO. 600-00932-00	REV 1
SCALE: 1:1		WT:	SHEET: 1 OF 1

NEXT ASSY	USED ON
-----------	---------