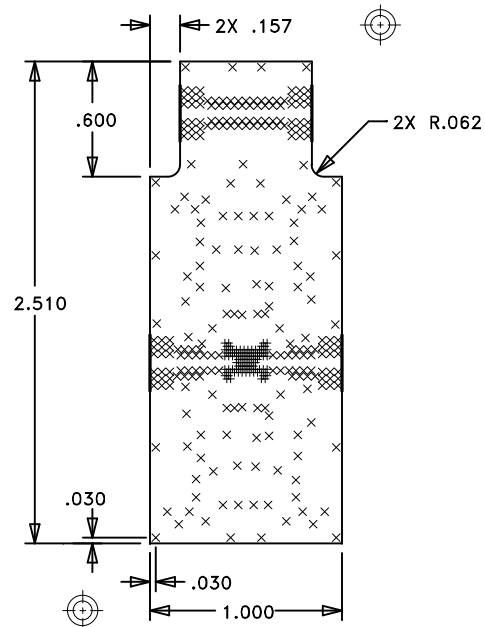


REVISION			
LTR	DESCRIPTION	DATE	APPROVED
A	CP160404 PRODUCTION RELEASE	04/13/16	M.LYONS



ANALOG DEVICES
PCB #131393-A
DRILL DRAWING

SIZE	QTY	SYM	PLATED	TOL
10	91	+	YES	+/-3
14	258	×	YES	+/-3

NOTES:

UNLESS OTHERWISE SPECIFIED:

1. MATERIAL: PER LAYER STACKUP AS SHOWN. TYPE ROGERS 4350B. HALF OUNCE COPPER BOTH SIDES,
2. FINISH: ENIG PER IPC-4552.
3. PLATED THRU HOLES: .001 MINIMUM WALL THICKNESS.
4. HOLE SIZES AND POSITIONS PER ARTWORK AND/OR DRILL FILE.
5. ALL HOLES TO BE LOCATED WITHIN ± 0.003 OF THE CENTER OF THE PAD OR OTHER TRUE POSITION.
6. FRONT TO BACK REGISTRATION ± 0.003 MAX.
7. BOARD WARPAGE: < 0.010 PER LINEAR INCH.
8. SILKSCREEN TOPSIDE ONLY WITH WHITE EPOXY INK.
9. SOLDERMASK: LPI SOLDERMASK TOP SIDE. COLOR: GREEN REGISTRATION: ± 0.004 MAX.
10. "SIZE" IN DRILL LEGEND IS IN MILS AND REFERS TO FINISHED HOLE SIZE.
11. MANUFACTURE PER IPC-6012, CLASS 2.

SPECIAL REQUIREMENTS:

12. METAL-01 CRITICAL LINE WIDTH = 0.016 ± 0.001 ADJUST PROCESS TO ACHIEVE WIDTH.
13. ALL .010 VIAS TO BE FILLED WITH NON-CONDUCTIVE VIA FILL AND OVERPLATED WITH Cu BOTH SIDES.

VENDOR NOTES:

14. VENDOR MAY ADD E-TEST STAMP TO PCB. VENDOR SHALL NOT ADD NAME, LOGO, DATE CODE, OR ANY OTHER MARKING TO ANY VISIBLE LAYER.
15. BOARDS MUST PASS VISUAL INSPECTION PER IPC-A-600, CLASS 2.

SILKSCREEN-01
SOLDERMASK-01

METAL-01 1/2oz Cu
RO4350B Core .010 ± 0.001 (CRITICAL)
METAL-02 1/2oz Cu

LAYER STACKUP

UNLESS OTHERWISE SPECIFIED:

DIMENSIONS ARE IN INCHES [mm]

DRAWING PRACTICES
PER ASME Y14.100

INTERPRET
DIMENSIONS & TOLERANCES
PER ASME Y14.5-2009

TOLERANCES:

.XX $\pm .01$
.XXX $\pm .005$
.XXX $\pm .0020$
ANGLES $\pm .5$ DEG.

DRAWN BY

V. LY

DATE DRN

07/13/10

CHECKED BY

ENGINEER

V. CANNISTRARO

THIRD ANGLE
PROJECTION



DO NOT SCALE DRAWING

PROPRIETARY TO ANALOG DEVICES



2 Elizabeth Drive
Chelmsford, MA 01824
978-250-3343
Fax: 978-250-3373

TITLE

PCB, EVAL

SIZE

A

CODE ID NO.

1CN88

DWG NO.

131393

REV

A

SCALE: NTS

WT:

SHEET: 1 OF 1

NEXT ASSY

USED ON