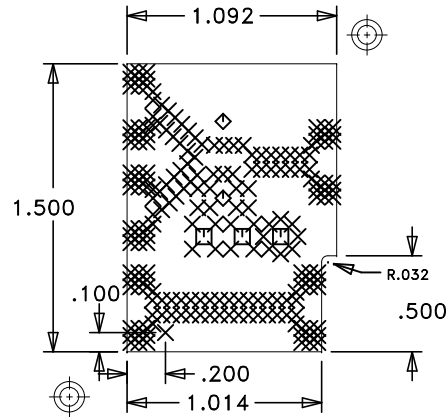
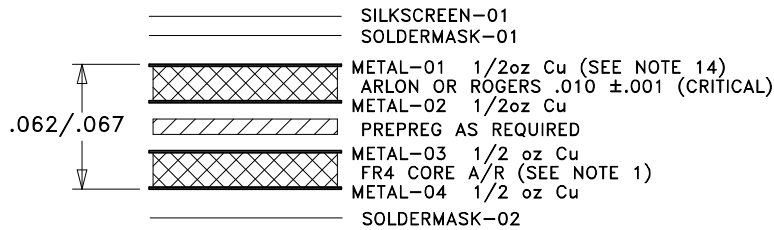


REVISION			
LTR	DESCRIPTION	DATE	APPROVED
1	ENGINEERING RELEASE	12/17/12	DONOVAN



HITTITE MICROWAVE
PCB #600-00702-00-1
DRILL DRAWING



STACKUP

NOTES:

UNLESS OTHERWISE SPECIFIED:

1. MATERIAL: MULTILAYER. OVERALL STACKUP AS SHOWN. TYPE ROGERS 4350B OR ARLON 25FR, HALF OUNCE COPPER BOTH SIDES. FR4 TO BE USED AS FILLER TO MEET CRITICAL OVERALL THICKNESS.
2. FINISH: GOLD PLATE PER ASTM B-488, TYPE III, CODE A, 8 TO 40 MICROINCHES, OVER NICKEL PER QQ-N-290, 100 MICROINCHES MINIMUM.
3. PLATED THRU HOLES: .001 MINIMUM WALL THICKNESS.
4. HOLE SIZES AND POSITIONS PER ARTWORK AND/OR DRILL FILE.
5. ALL HOLES TO BE LOCATED WITHIN ± 0.003 OF THE CENTER OF THE PAD OR OTHER TRUE POSITION.
6. FRONT TO BACK REGISTRATION ± 0.003 MAX.
7. BOARD WARPAGE: < 0.010 PER LINEAR INCH.
8. SILKSCREEN TOP SIDE ONLY WITH WHITE EPOXY INK.
9. SOLDERMASK: LPI SOLDERMASK BOTH SIDES. COLOR: GREEN REGISTRATION: ± 0.004 MAX.
10. "SIZE" IN DRILL LEGEND IS IN MILS AND REFERS TO FINISHED HOLE SIZE.
11. MANUFACTURE PER IPC-6012 CLASS 2.
12. PLATING THICKNESS $.002 \pm 0.0005$ FOR METAL-01 AND METAL-04.
13. ARTWORK IS 1:1. VENDOR TO ADJUST FOR ETCH FACTOR.


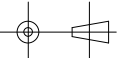
SPECIAL REQUIREMENTS:

14. CRITICAL LINE WIDTH = $.016 \pm 0.001$ ON METAL-01. ADJUST PROCESS TO ACHIEVE WIDTH.

VENDOR NOTES:

15. VENDOR MAY ADD E-TEST STAMP TO PCB. VENDOR SHALL NOT ADD NAME, LOGO, DATE CODE, UL LISTING OR ANY OTHER MARKING TO ANY VISIBLE LAYER.
16. BOARDS MUST PASS VISUAL INSPECTION PER IPC-A-600 CLASS 2.

SIZE	QTY	SYM	PLATED	TOL
14	206	✕	YES	+/-3
43	3	□	YES	+/-3
65	2	◇	YES	+/-3

UNLESS OTHERWISE SPECIFIED:		DRAWN BY DONOVAN		DATE DRN 12/17/12		 HITTITE MICROWAVE CORPORATION 20 Alpha Road Chelmsford, MA 01824				
DIMENSIONS ARE IN INCHES [mm]		CHECKED BY				TITLE PCB, EVAL				
DRAWING PRACTICES PER ASME Y14.100		ENGINEER M. KELLY								
INTERPRET DIMENSIONS & TOLERANCES PER ASME Y14.5-2009										
TOLERANCES:		THIRD ANGLE PROJECTION				SIZE A	CODE ID NO. 1CN88	DWG NO. 600-00702-00		REV 1
.XX ± .01 .XXX ± .005 .XXXX ± .0020 ANGLES ± .5 DEG.		DO NOT SCALE DRAWING				SCALE: 1:1		WT:	SHEET: 1 OF 1	