

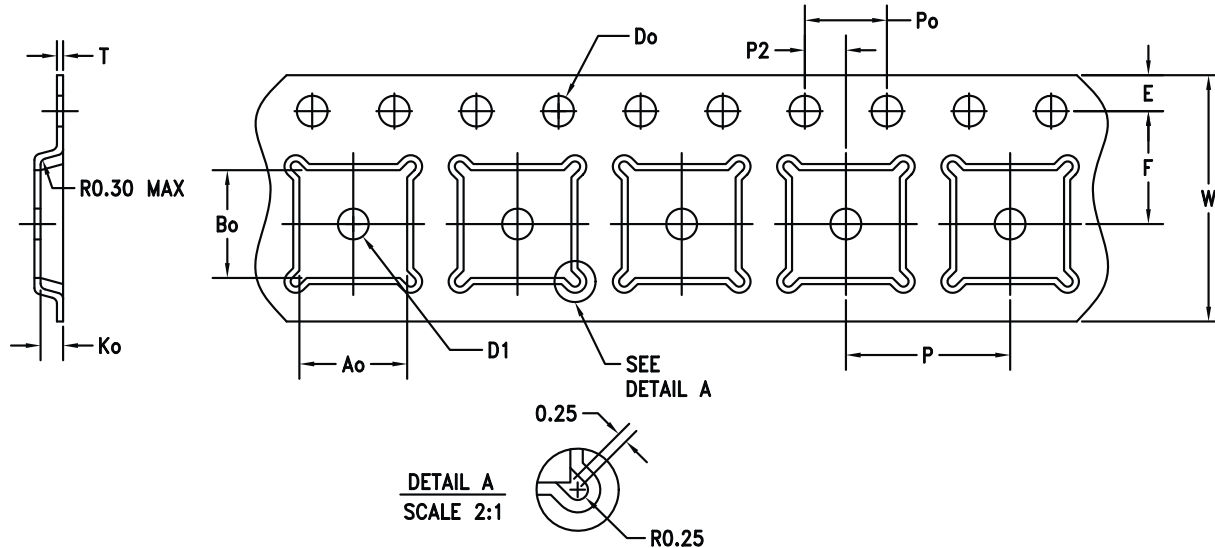
# Analog Devices Welcomes Hittite Microwave Corporation

NO CONTENT ON THE ATTACHED DOCUMENT HAS CHANGED

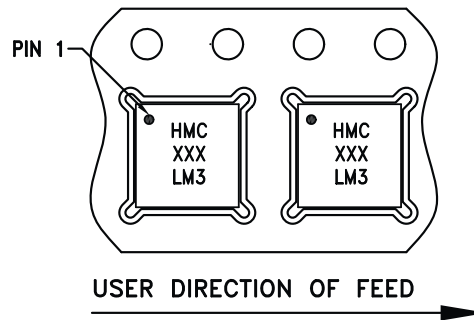


**THIS PAGE INTENTIONALLY LEFT BLANK**

## CERAMIC LEADLESS HIGH FREQUENCY PACKAGE TAPE SPECIFICATION (LM3, LM3B, & LM3C)



### COMPONENT ORIENTATION (FORWARD TAPE AND REEL)



CAVITY: LM3, LM3B, LM3C

DIMENSION	SPEC
W	12.00 +/-0.30
Do	∅1.5 +0.1/-0.0
Po (SEE NOTE 2)	4.00 +/-0.10
E	1.75 +/-0.10
D1	∅1.5 MIN
Ao	5.30 +/-0.10
Bo	5.30 +/-0.10
P	8.00 +/-0.10
P2 (SEE NOTE 7)	2.00 +/-0.05
Ko	1.83 +/-0.10
T	0.30 +/-0.05
F (SEE NOTE 7)	5.50 +/-0.05

**NOTES:**

1. ALL DIMENSIONS ARE IN MILLIMETERS
2. 10 SPROCKET HOLE PITCH CUMULATIVE TOLERANCE ±0.2
3. CAMBER NOT TO EXCEED 1mm IN 100mm
4. MATERIAL: CONDUCTIVE /BLACK POLYSTYRENE
5. Ao AND Bo MEASURED ON A PLANE 0.3mm ABOVE THE BOTTOM OF THE POCKET
6. Ko MEASURED FROM A PLANE ON THE INSIDE BOTTOM OF THE POCKET TO THE TOP SURFACE OF THE CARRIER
7. POCKET POSITION RELATIVE TO SPROCKET HOLE MEASURED AS TRUE POSITION OF POCKET, NOT POCKET HOLE

