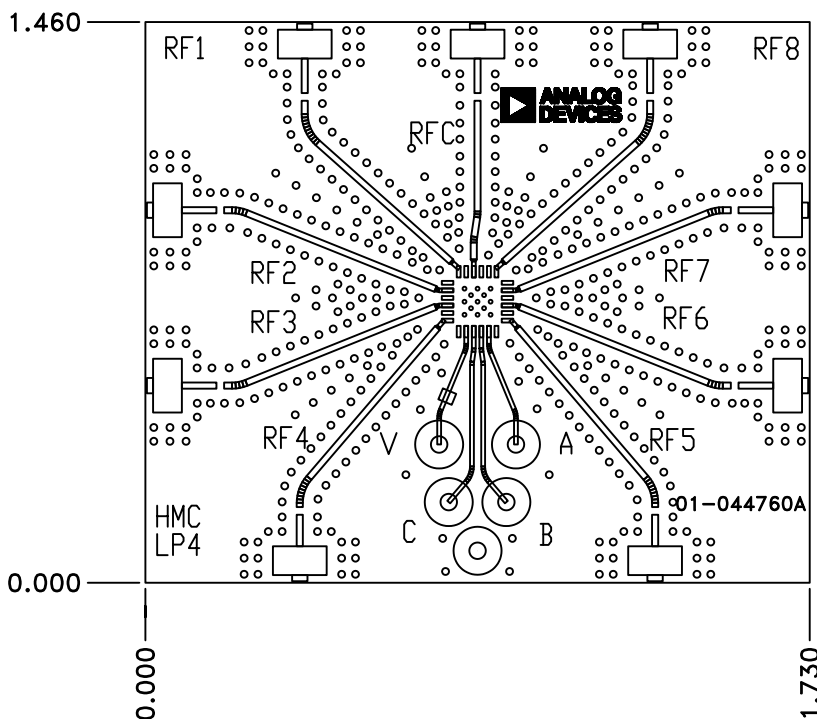


5 4 3 2 1  
DO NOT SCALE PRINT



REVISION				
ZONE	REV	DESCRIPTION	DATE	APPROVED
	A	INITIAL RELEASE	10/24/16	Y.AYDIN

MET-1	1/2 OZ COPPER	0.010"±0.001 ROGERS 4350 SEE NOTE# 1	0.062
MET-2	1/2 OZ COPPER	.016" 4403	0.067
MET-3	1/2 OZ COPPER	0.030"±0.002 ROGERS 4350 SEE NOTE# 1	
MET-4	1/2 OZ COPPER		

NOTES: UNLESS OTHERWISE SPECIFIED

1. MATERIAL: MULTILAYER. OVERALL STACKUP AS SHOWN. TYPE ROGERS 4350, HALF OUNCE COPPER BOTH SIDES.
2. FINISH: ENIG PER IPC-4552.
3. PLATED THRU HOLES: .001" MINIMUM WALL THICKNESS.
4. HOLE SIZES AND POSITIONS PER ARTWORK AND/OR DRILL FILE.
5. ALL HOLES TO BE LOCATED WITHIN ±.003" OF THE CENTER OF THE PAD OR OTHER TRUE POSITION.
6. FRONT TO BACK REGISTRATION ±.003" MAX
7. BOARD WARPAGE: .010" PER LINEAR INCH MAX
8. SILKSCREEN TOPSIDE ONLY WITH WHITE EPOXY INK
9. TOLERANCE ON PCB ROUTE IS ±.005"
10. PLATING THICKNESS .0018"±.0005 FOR MET-1 AND MET-4
11. SOLDERMASK: APPLY LPI SOLDERMASK TOPSIDE ONLY. COLOR: GREEN REGISTRATION: ±.004" MAX ANY CHANGES TO SOLDERMASK MUST BE APPROVED BY HITTITE.
12. REMOVE METAL BURRS FROM EDGE OF PCB AFTER PANEL SEPERATION.
13. ARTWORK IS 1:1. VENDOR TO ADJUST FOR ETCH FACTOR.

CRITICAL LINE WIDTH = .016±.001 ADJUST PROCESS TO ACHIEVE WIDTH


TABLE 1 : HOLE DIAMETERS

LETTER DESIG.	DIAMETER	QTY	TYPE	NOTES
NONE	0.010	13	PTH	+.000/--.008
NONE	0.018	474	PTH	+.000/--.008
NONE	0.043	5	PTH	+.003/--.003

UNLESS OTHERWISE SPECIFIED: DIMENSIONS ARE IN INCHES (MM)	
DRAWING PRACTICES PER MIL-STD-100	
TOLERANCES:	
.XX	+/- .01
.XXX	+/- .005
ANGLES	+/- .5 DEG

PROPRIETARY TO ANALOG DEVICES, INC.

DRAWN A. BOLD 3/4/01	CHECKED
ENG. APPD.	HMC APPD.
RELEASED	

	<b>ANALOG DEVICES</b>	2 Elizabeth Drive Chelmsford, MA 01824 978-250-3343 Fax: 978-250-3373	
TITLE FABRICATION HMC321ALP4E EVAL Z			
SIZE A	CODE ID NO. 1CN88	DRAWING NO. 09-044760	REV A
SCALE 2 TO 1	WT	SHEET 1 OF 1	