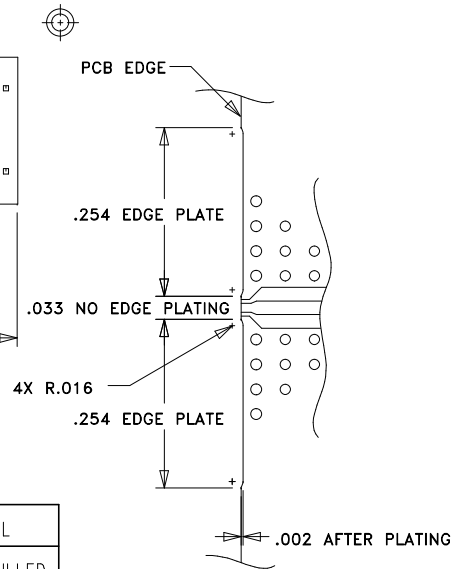
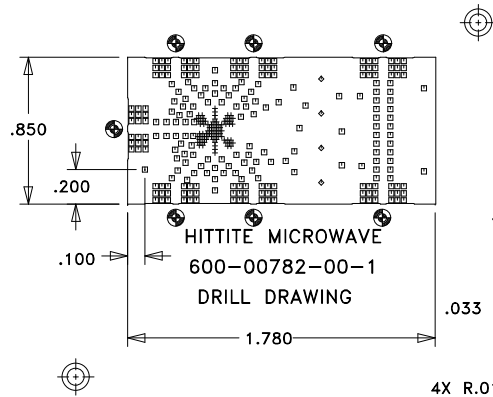


REVISION			
LTR	DESCRIPTION	DATE	APPROVED
1	ENGINEERING RELEASE	04/03/13	V. LY



EDGE PLATE DETAIL, 7X
 Ⓢ DENOTES EDGE PLATING LOCATION

SIZE	QTY	SYM	PLATED	TOL
10	78	+	YES	+/-3 FILLED
14	237	□	YES	+/-3
43	4	◇	YES	+/-3

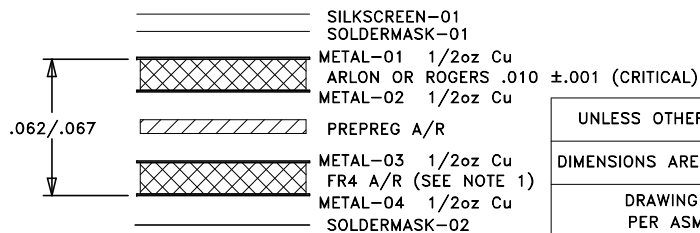
NOTES:

UNLESS OTHERWISE SPECIFIED:

- MATERIAL: MULTILAYER. OVERALL STACKUP AS SHOWN. TYPE ROGERS 4350B OR ARLON 25FR, HALF OUNCE COPPER BOTH SIDES. FR4 TO BE USED AS FILLER TO MEET CRITICAL OVERALL THICKNESS.
- FINISH: GOLD PLATE PER ASTM B-488, TYPE III, CODE A, 8 TO 40 MICROINCHES, OVER NICKEL PER QQ-N-290, 100 MICROINCHES MINIMUM.
- PLATED THRU HOLES: .001 MINIMUM WALL THICKNESS.
- HOLE SIZES AND POSITIONS PER ARTWORK AND/OR DRILL FILE.
- ALL HOLES TO BE LOCATED WITHIN $\pm .003$ OF THE CENTER OF THE PAD OR OTHER TRUE POSITION.
- FRONT TO BACK REGISTRATION $\pm .003$ MAX.
- BOARD WARPAGE: $< .010$ PER LINEAR INCH.
- SILKSCREEN TOP SIDE WITH WHITE EPOXY INK.
- SOLDERMASK: LPI SOLDERMASK BOTH SIDES. COLOR: GREEN REGISTRATION: $\pm .004$ MAX.
- "SIZE" IN DRILL LEGEND IS IN MILS AND REFERS TO FINISHED HOLE SIZE.
- MANUFACTURE PER IPC-6012 CLASS 2.
- PLATING THICKNESS $.002 \pm .0005$ FOR METAL-01 AND METAL-04.
- ARTWORK IS 1:1 VENDOR TO ADJUST FOR ETCH FACTOR.
- CRITICAL LINE WIDTH = $.016 \pm .001$ ON METAL-01. ADJUST PROCESS TO ACHIEVE WIDTH.
- ALL 10 MIL VIAS TO BE FILLED WITH NON-CONDUCTIVE VIA FILL AND OVERPLATED WITH Cu BOTH SIDES.
- EDGE PLATING MUST CONNECT ALL FOUR METAL LAYERS.
- VENDOR MAY ADD E-TEST STAMP TO PCB. VENDOR SHALL NOT ADD NAME, LOGO, DATE CODE, UL LISTING OR ANY OTHER MARKING TO ANY VISIBLE LAYER.
- BOARDS MUST PASS VISUAL INSPECTION PER IPC-A-600 CLASS 2.

SPECIAL REQUIREMENTS:

VENDOR NOTES:



STACKUP

UNLESS OTHERWISE SPECIFIED:	
DIMENSIONS ARE IN INCHES [mm]	
DRAWING PRACTICES PER ASME Y14.100	
INTERPRET DIMENSIONS & TOLERANCES PER ASME Y14.5-2009	
TOLERANCES:	
.XX	$\pm .01$
.XXX	$\pm .005$
.XXXX	$\pm .0020$
ANGLES	$\pm .5$ DEG.

DRAWN BY	DATE DRN
V. LY	03/18/13
CHECKED BY	
ENGINEER	
H. EBBSON	
THIRD ANGLE PROJECTION	
DO NOT SCALE DRAWING	

PROPRIETARY TO HITTITE MICROWAVE CORPORATION



HITTITE MICROWAVE CORPORATION
 20 Alpha Road
 Chelmsford, MA 01824

TITLE

PCB, EVAL

SIZE	CODE ID NO.	DWG NO.	REV
A	1CN88	600-00782-00	1
SCALE: 1:1		WT:	SHEET: 1 OF 1

NEXT ASSY	USED ON