
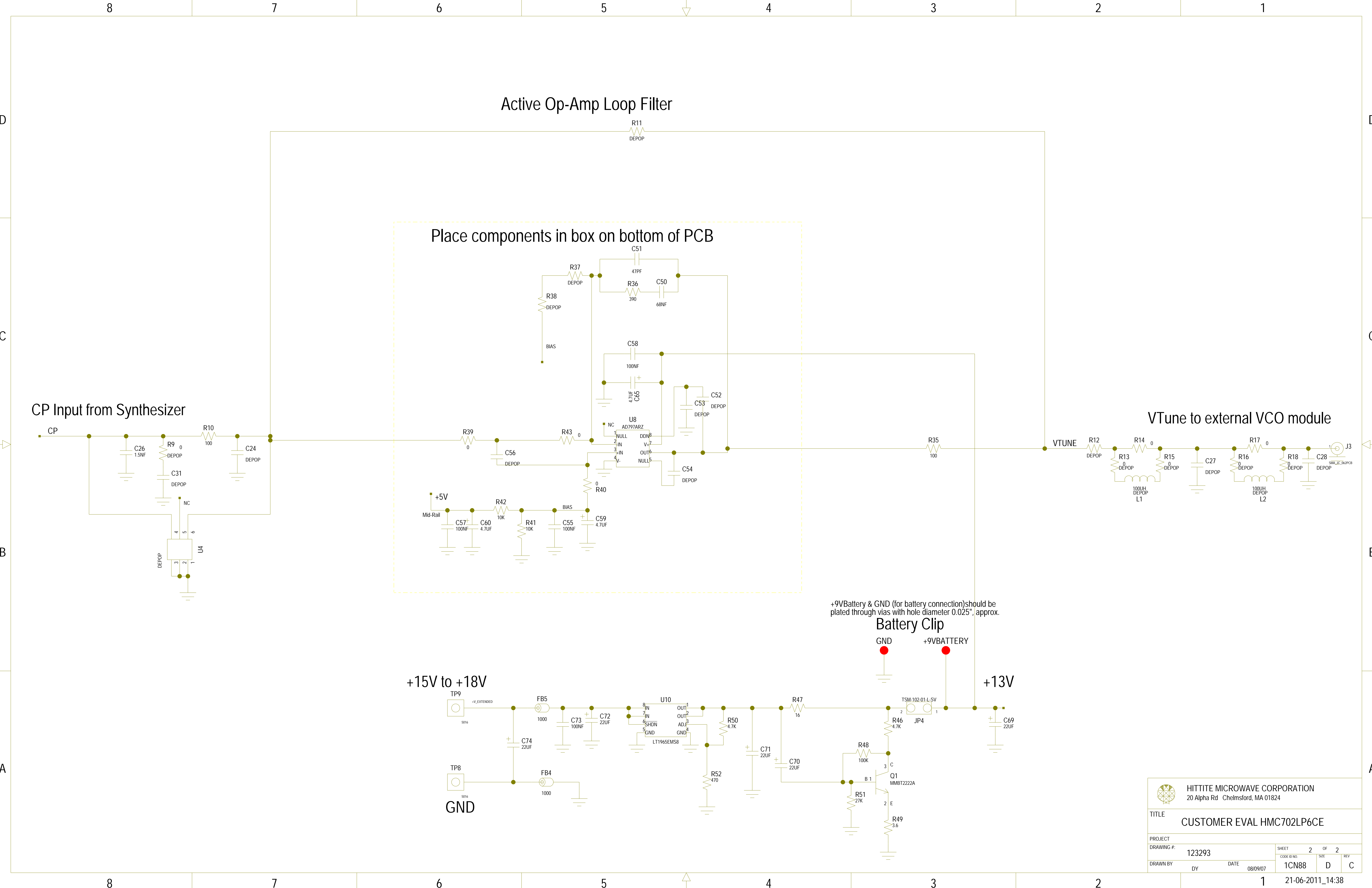


REVISIONS					
REV	ECN#	ZONE	DESCRIPTION	NAME	DATE
C	ECN 20091189 FIXED U3, C48 & R34 TO DEPOP, INSTALL C3	DY/ML	11/06/2009
D	ADD RX REWORK CP110870	V.VADUVA	06/21/2011

NOTICE OF PROPRIETARY PROPERTY: THIS DOCUMENT AND THE INFORMATION CONTAINED IN IT ARE THE PROPRIETARY PROPERTY OF HITITE MICROWAVE CORPORATION. IT MAY NOT BE COPIED OR USED IN ANY MANNER NOR MAY ANY OF THE INFORMATION IN OR UPON IT BE USED FOR ANY PURPOSE WITHOUT THE EXPRESSED WRITTEN CONSENT OF AN AUTHORIZED AGENT OF HITITE MICROWAVE CORPORATION.

<div></div> <div>HITTITE MICROWAVE CORPORATION 20 Alpha Rd Chelmsford, MA 01824</div>					
TITLE SCH, CUSTOMER EVALUATION					
PROJECT HMC702LP6CE		SHEET 1 OF 2			
DRAWING #: 123293		CODE ID NO. 1CN88		SIZE D	REV D
DRAWN BY DY		DATE 08/09/07			



Active Op-Amp Loop Filter

Place components in box on bottom of PCB


CP Input from Synthesizer

VTune to external VCO module

+9VBattery & GND (for battery connection) should be plated through vias with hole diameter 0.025", approx.

Battery Clip

+15V to +18V

 HITTITE MICROWAVE CORPORATION 20 Alpha Rd Chelmsford, MA 01824	
TITLE CUSTOMER EVAL HMC702LP6CE	
PROJECT	
DRAWING #: 123293	SHEET 2 OF 2
DRAWN BY DY	DATE 08/09/07
CODE ID NO. 1CN88	SIZE D
REV C	REV C