

[illegible]

D

C

B

A

DO NOT SCALE PRINT

HITTITE MICROWAVE  
PCB #125536-3  
DRILL DRAWING

SILKSCREEN-01  
SOLDERMASK-01  
METAL-01 1/2oz Cu (.0007") (SEE NOTE 11)  
ROGERS 4350 OR ARLON-25FR CORE .010" +/--.001" (CRITICAL)  
METAL-02 1/2oz Cu (.0007")  
PREPREG AS REQUIRED  
METAL-03 1/2oz Cu (.0007")  
PREPREG AS REQUIRED  
METAL-04 FOIL 1/2oz Cu (.0007")

LAYER STACKUP

NOTES:  
MATERIALS AND TOLERANCES:  
1. MATERIAL: MULTILAYER. OVERALL STACKUP AS SHOWN. TYPE ROGERS 4350 OR ARLON 25FR AND FR4, HALF OUNCE COPPER.  
2. FINISH: GOLD PLATE PER ASTM B-488 TYPE III CODE A 8-40 MICROINCHES OVER NICKEL PER QQ-N-290 100 MICROINCHES MINIMUM.  
3. APPLY LPI SOLDERMASK TOP SIDE ONLY. COLOR: GREEN.  
4. SILKSCREEN TOP SIDE ONLY WITH WHITE NON-CONDUCTIVE INK. ENSURE SILKSCREEN DOES NOT COVER COMPONENT PADS - CLIP SILKSCREEN IF NECESSARY.  
5. MANUFACTURE PER IPC-6012 CLASS 2.  
6. ALL HOLES TO BE LOCATED WITHIN ±.003" OF CENTER OF PAD OR OTHER TRUE POSITION.  
7. COPPER PLATE ALL HOLES MINIMUM .001" COPPER WALL THICKNESS.  
8. "SIZE" IN DRILL LEGEND IS IN MILS AND REFERS TO FINISHED HOLE SIZE.  
9. WARPAGE: <.010" PER LINEAR INCH.  
10. FRONT TO BACK REGISTRATION: ±.003" MAX.

SPECIAL REQUIREMENTS:  
11. CRITICAL LINE WIDTH OF .016 ±.001" ON METAL-01.  
12. BLIND VIAS: METAL LAYERS 1-3, PER DRILL FILE.

VENDOR NOTES:  
13. VENDOR TO COMPARE IPC NET LIST TO GERBER FILES FOR CONTINUITY. ANY DISCREPANCIES MUST BE REPORTED TO HITTITE MICROWAVE.  
14. VENDOR MAY ADD E-TEST STAMP TO PCB. VENDOR SHALL NOT ADD NAME, LOGO, DATE CODE, UL LISTING OR ANY OTHER MARKING TO ANY VISIBLE LAYER.  
15. BOARDS MUST PASS VISUAL INSPECTION PER IPC-A-600 CLASS 2.  
16. FINISHED BOARDS ARE TO BE BARE BOARD TESTED.

PROPRIETARY TO HITTITE MICROWAVE CORPORATION

UNLESS OTHERWISE SPECIFIED:  
DWN BY:  
V. LY                  3/31/2009  
DRAWING PRACTICES PER  
MIL-STD-100  
ENGINEER:  
J. GAO                4/01/2009  
TOLERANCES:  
.XX              + / - 0.010  
.XXX             + / - 0.005  
.XXXX           + / - 0.002  
ANGLES          + / - .5 DEG

TITLE  
HITTITE MICROWAVE CORPORATION  
20 Alpha Road Chelmsford, MA 01824  
PCB, EVAL  
HMC4389LP6CE  
SIZE      CODE ID NO.      DRAWING NO.      REV  
B      1CN88      125536      3  
SCALE: 1:1      WT      SHEET 1 of 1

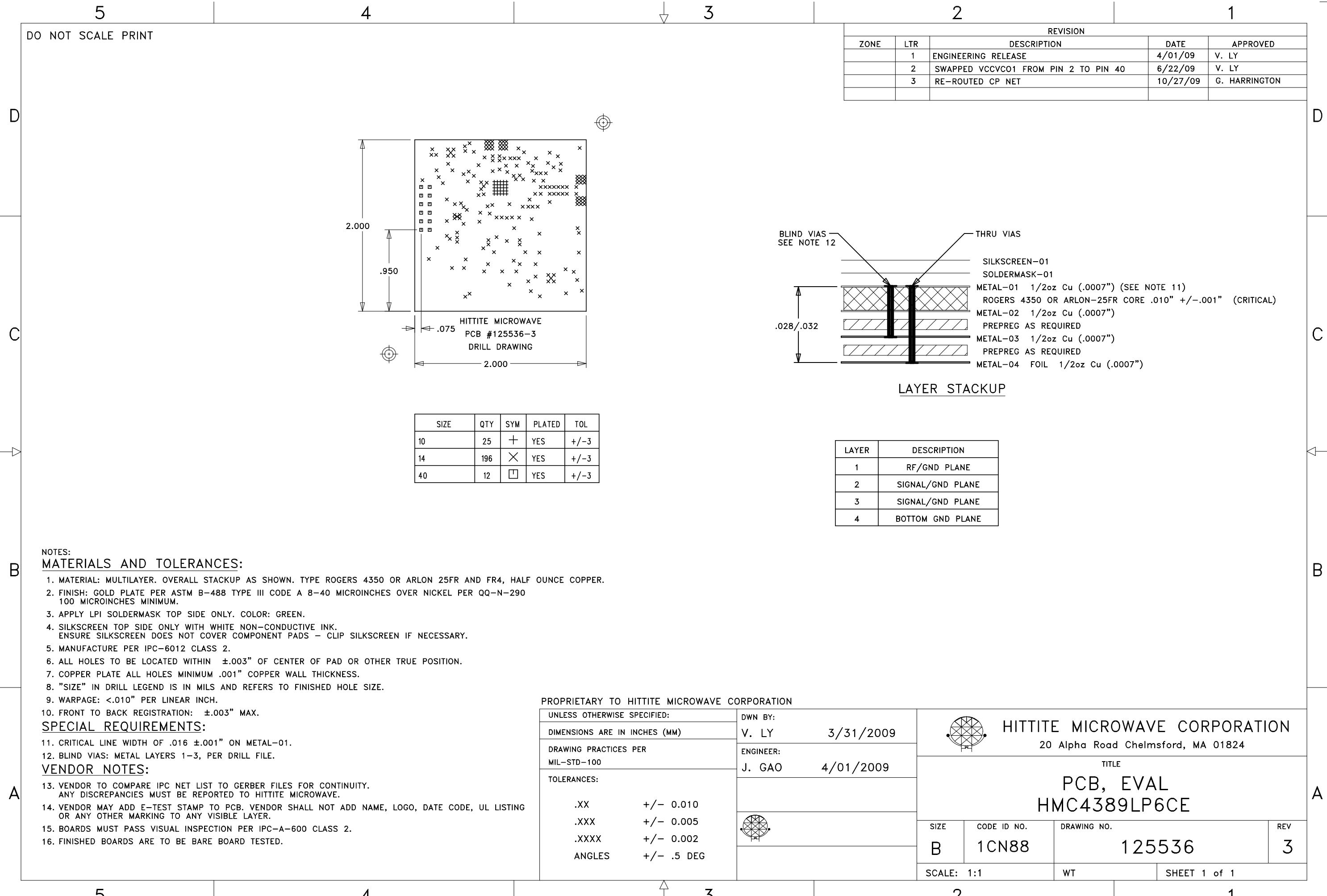
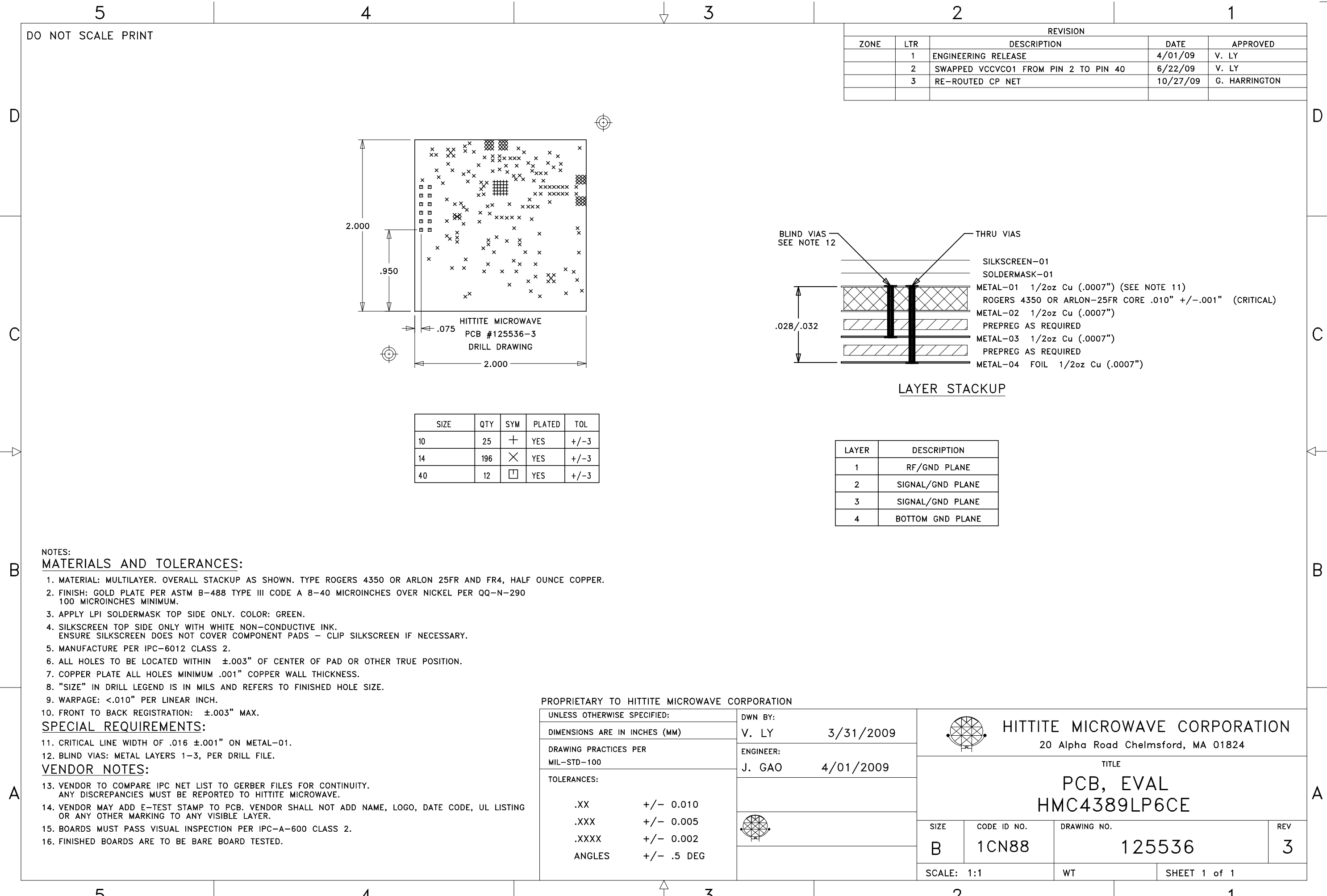
5

4

3

2

1

[illegible][illegible][illegible][illegible][illegible]

- [illegible]

[illegible]

- [illegible]

[illegible]

- [illegible]

[illegible][illegible]