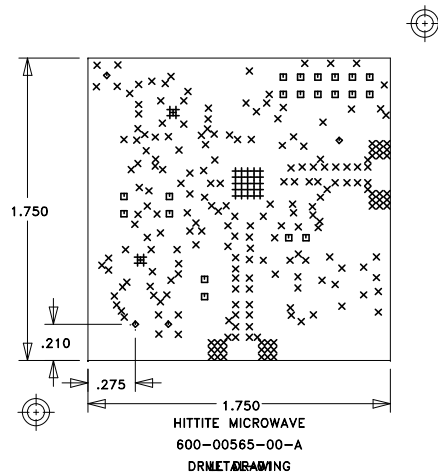


REVISION			
LTR	DESCRIPTION	DATE	APPROVED
A	PRODUCTION RELEASE PER CP121275	09/20/2012	V. VADUVA



NOTES:

UNLESS OTHERWISE SPECIFIED:

1. MATERIAL: MULTILAYER. OVERALL STACKUP AS SHOWN. TYPE ROGERS 4350B OR ARLON 25FR, HALF OUNCE COPPER BOTH SIDES. FR4 TO BE USED AS FILLER TO MEET CRITICAL OVERALL THICKNESS.
2. FINISH: GOLD PLATE PER ASTM B-488, TYPE III, CODE A, 8 TO 40 MICROINCHES, OVER NICKEL PER QQ-N-290, 100 MICROINCHES MINIMUM.
3. PLATED THRU HOLES: .001 MINIMUM WALL THICKNESS.
4. HOLE SIZES AND POSITIONS PER ARTWORK AND/OR DRILL FILE.
5. ALL HOLES TO BE LOCATED WITHIN ± 0.003 OF THE CENTER OF THE PAD OR OTHER TRUE POSITION.
6. FRONT TO BACK REGISTRATION ± 0.003 MAX.
7. BOARD WARPAGE: $< .010$ PER LINEAR INCH.
8. SILKSCREEN TOP AND BOTTOM SIDE WITH WHITE EPOXY INK.
9. SOLDERMASK: LPI SOLDERMASK TOP SIDE AND BOTTOM SIDE. COLOR: GREEN REGISTRATION: ± 0.004 MAX.
10. "SIZE" IN DRILL LEGEND IS IN MILS AND REFERS TO FINISHED HOLE SIZE.
11. MANUFACTURE PER IPC-6012 CLASS 2.
12. PLATING THICKNESS $.002 \pm .0005$ FOR METAL-01 AND METAL-04.
13. ARTWORK IS 1:1. VENDOR TO ADJUST FOR ETCH FACTOR.

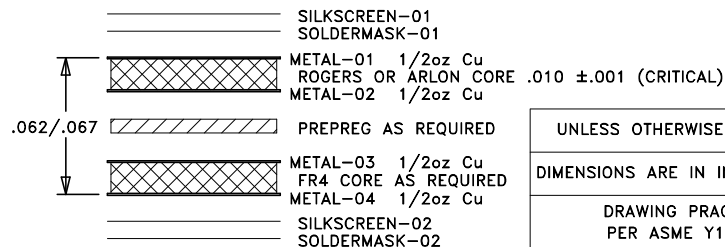
SPECIAL REQUIREMENTS:

14. CRITICAL LINE WIDTH = $.016 \pm .001$ ON METAL-01. ADJUST PROCESS TO ACHIEVE WIDTH.

VENDOR NOTES:

18. VENDOR MAY ADD E-TEST STAMP TO PCB. VENDOR SHALL NOT ADD NAME, LOGO, DATE CODE, UL LISTING OR ANY OTHER MARKING TO ANY VISIBLE LAYER.
19. BOARDS MUST PASS VISUAL INSPECTION PER IPC-A-600 CLASS 2.

SIZE	QTY	SYM	PLATED	TOL
10	35	+	YES	+/-3
14	219	X	YES	+/-3
40	20	□	YES	+/-3
63	4	◇	YES	+/-3



LAYER STACKUP

NEXT ASSY	USED ON
-----------	---------

UNLESS OTHERWISE SPECIFIED:	
DIMENSIONS ARE IN INCHES [mm]	
DRAWING PRACTICES PER ASME Y14.100	
INTERPRET DIMENSIONS & TOLERANCES PER ASME Y14.5-2009	
TOLERANCES:	
.XX	$\pm .01$
.XXX	$\pm .005$
.XXXX	$\pm .0020$
ANGLES	$\pm .5$ DEG.

DRAWN BY V. VADUVA	DATE DRN 09/20/2012
CHECKED BY	
ENGINEER D. YOUNG	09/20/2012
THIRD ANGLE PROJECTION	
DO NOT SCALE DRAWING	

PROPRIETARY TO HITTITE MICROWAVE CORPORATION



HITTITE MICROWAVE CORPORATION
20 Alpha Road
Chelmsford, MA 01824

TITLE
PCB, CUSTOMER EVAL
INTEGRATED PLL & VCO FO&FO/2

SIZE	CODE ID NO.	DWG NO.	REV
A	1CN88	600-00565-00	A
SCALE: 1:1		WT:	SHEET: 1 OF 1