

REVISION			
LTR	DESCRIPTION	DATE	APPROVED
1	ENGINEERING RELEASE	01/19/12	V.VADUVA
2	CHANGE AS PER QC121145	10/16/12	D. ACEVAL

SIZE	QTY	SYM	PLATED	TOL
10	49	+	YES	+/-3
14	809	×	YES	+/-3
40	28	□	YES	+/-3
63	7	◇	YES	+/-3
133	4	⊗	YES	+/-3

NOTES:  
MATERIALS AND TOLERANCES:

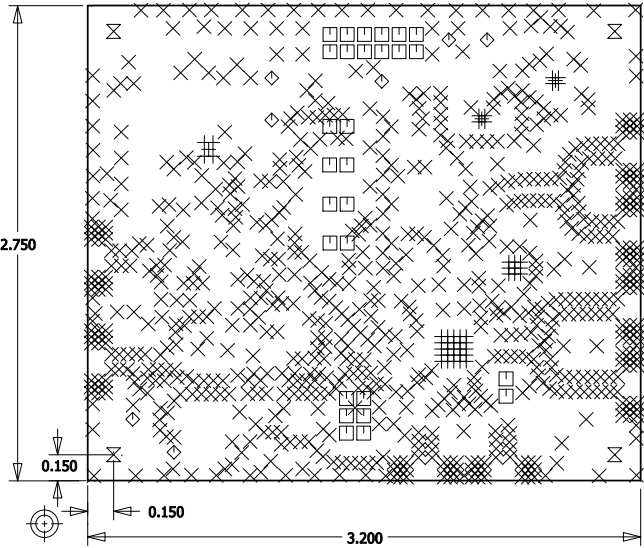
1. MATERIAL: MULTILAYER. OVERALL STACKUP AS SHOWN. TYPE ROGERS 4350B OR ARLON 25FR, HALF OUNCE COPPER BOTH SIDES. FR4 TO BE USED AS FILLER TO MEET, CRITICAL OVERALL THICKNESS.
2. FINISH: GOLD PER ASTM B-488 TYPE III CODE A 8-40 MICROINCHES OVER NICKEL PER QQ-N-290, 100 MICROINCHES MINIMUM.
3. APPLY LPI SOLDERMASK BOTH SIDES. COLOR: GREEN.
4. SILKSCREEN BOTH SIDES WITH WHITE NON-CONDUCTIVE INK. ENSURE SILKSCREEN DOES NOT COVER COMPONENT PADS - CLIP SILKSCREEN IF NECESSARY.
5. MANUFACTURE PER IPC-6012 CLASS 2.
6. ALL HOLES TO BE LOCATED WITHIN ±.003 OF CENTER OF PAD OR OTHER TRUE POSITION.
7. COPPER PLATE ALL HOLES MINIMUM .001 COPPER WALL THICKNESS.
8. "SIZE" IN DRILL LEGEND IS IN MILS AND REFERS TO FINISHED HOLE SIZE.
9. WARPAGE: <.010 PER LINEAR INCH.
10. FRONT TO BACK REGISTRATION: ±.003 MAX.

SPECIAL REQUIREMENTS:

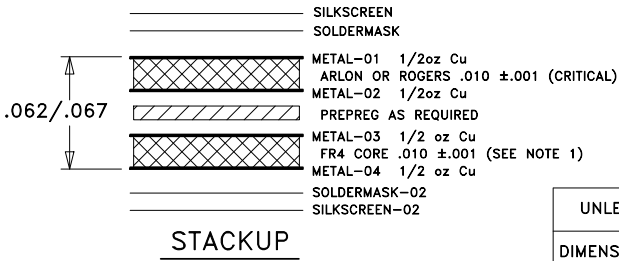
11. CRITICAL LINE WIDTH OF .016 ±.001 ON METAL-01.

VENDOR NOTES:


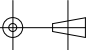
12. VENDOR TO COMPARE IPC NET LIST TO GERBER FILES FOR CONTINUITY. ANY DISCREPANCIES MUST BE REPORTED TO HITTITE MICROWAVE.
13. VENDOR MAY ADD E-TEST STAMP TO PCB. VENDOR SHALL NOT ADD NAME, LOGO, DATE CODE, UL LISTING OR ANY OTHER MARKING TO ANY VISIBLE LAYER.
14. ANY CHANGES TO METAL LAYERS OR STACKUP MUST BE APPROVED BY HITTITE MICROWAVE.
15. BOARDS MUST PASS VISUAL INSPECTION PER IPC-A-600 CLASS 2.
16. FINISHED BOARDS ARE TO BE BARE BOARD TESTED.



HITTITE MICROWAVE  
600-00359-00-2  
DRILL DRAWING



STACKUP

UNLESS OTHERWISE SPECIFIED:		DRAWN BY		DATE DRN		<div> HITTITE MICROWAVE CORPORATION 20 Alpha Road Chelmsford, MA 01824</div>							
DIMENSIONS ARE IN INCHES [mm]		VIOREL VADUVA		01/16/12									
DRAWING PRACTICES PER ASME Y14.100		CHECKED BY		GERRY HARRINGTON		01/16/12		TITLE  PCB, CUSTOMER EVALUATION					
		ENGINEER											
INTERPRET DIMENSIONS & TOLERANCES PER ASME Y14.5—2009		JINMEI CHENG		01/16/12									
TOLERANCES:		THIRD ANGLE PROJECTION				SIZE A				CODE ID NO. 1CN88		DWG NO. 600—00359—00	
.XX ± .01		DO NOT SCALE DRAWING						SCALE: 1:1		WT:		SHEET: 1 OF 1	
.XXX ± .005													
.XXXX ± .0020													
ANGLES ± .5 DEG.													