



REVISION			
LTR	DESCRIPTION	DATE	APPROVED
1	ENGINEERING RELEASE	11/17/14	J. DONOVAN

NOTES:
UNLESS OTHERWISE SPECIFIED:

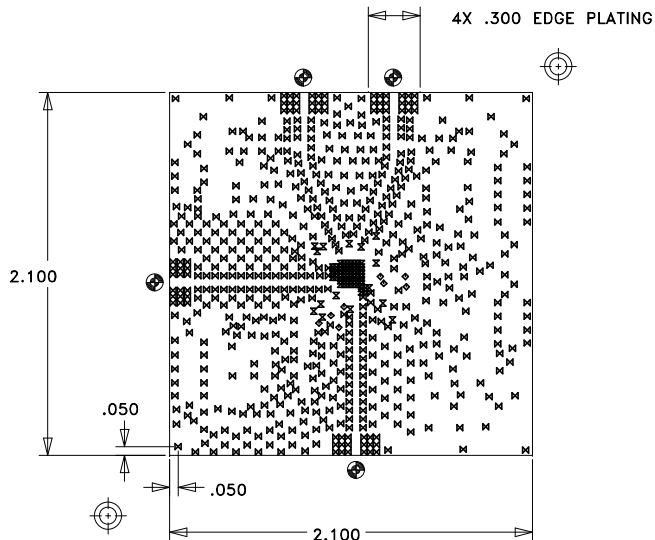
1. MATERIAL: MULTILAYER. OVERALL STACKUP AS SHOWN. TYPE ROGERS 4350B OR ARLON 25FR, HALF OUNCE COPPER BOTH SIDES. FR4 TO BE USED AS FILLER TO MEET CRITICAL OVERALL THICKNESS.
2. ENIG PER IPC-4552.
3. PLATED THRU HOLES: .001 MINIMUM WALL THICKNESS.
4. HOLE SIZES AND POSITIONS PER ARTWORK AND/OR DRILL FILE.
5. ALL HOLES TO BE LOCATED WITHIN $\pm .003$ OF THE CENTER OF THE PAD OR OTHER TRUE POSITION.
6. FRONT TO BACK REGISTRATION $\pm .003$ MAX.
7. BOARD WARPAGE: $< .010$ PER LINEAR INCH.
8. SILKSCREEN TOP SIDE WITH WHITE EPOXY INK.
9. SOLDERMASK: LPI SOLDERMASK BOTH SIDES. COLOR: GREEN REGISTRATION: $\pm .004$ MAX.
10. "SIZE" IN DRILL LEGEND IS IN MILS AND REFERS TO FINISHED HOLE SIZE.
11. MANUFACTURE PER IPC-6012 CLASS 2.
12. PLATING THICKNESS .002 $\pm .0005$ FOR METAL-01 AND METAL-04.
13. ARTWORK IS 1:1 VENDOR TO ADJUST FOR ETCH FACTOR.

SPECIAL REQUIREMENTS:

14. CRITICAL LINE WIDTH = $.016 \pm .001$ ON METAL-01. ADJUST PROCESS TO ACHIEVE WIDTH.
15. ALL .010 AND .014 VIAS TO BE FILLED WITH NON-CONDUCTIVE VIA FILL AND OVERPLATED WITH Cu BOTH SIDES.
16. EDGE PLATING MUST CONNECT ALL FOUR METAL LAYERS.

VENDOR NOTES:

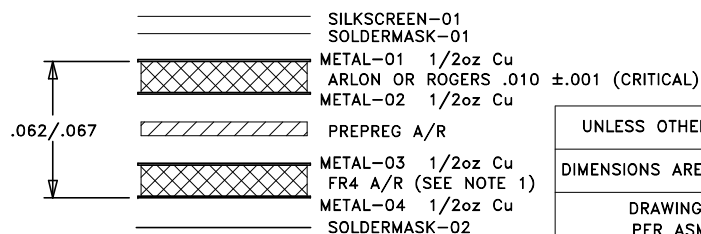
17. VENDOR MAY ADD E-TEST STAMP TO PCB. VENDOR SHALL NOT ADD NAME, LOGO, DATE CODE, UL LISTING OR ANY OTHER MARKING TO ANY VISIBLE LAYER.
18. BOARDS MUST PASS VISUAL INSPECTION PER IPC-A-600 CLASS 2.



ANALOG DEVICES
600-01352-00-1
DRILL DRAWING

⊙ DENOTES EDGE PLATING LOCATION

SIZE	QTY	SYM	PLATED	TOL
9.9	8	◇	YES	+/-3
10	76	⊗	YES	+/-3 FILLED
14	632	⊗	YES	+/-3



STACKUP

NEXT ASSY	USED ON
-----------	---------

UNLESS OTHERWISE SPECIFIED: DIMENSIONS ARE IN INCHES [mm] DRAWING PRACTICES PER ASME Y14.100 INTERPRET DIMENSIONS & TOLERANCES PER ASME Y14.5-2009 TOLERANCES: .XX $\pm .01$.XXX $\pm .005$.XXXX $\pm .0020$ ANGLES $\pm .5$ DEG.	DRAWN BY J. DONOVAN	DATE DRN 11/6/14
	CHECKED BY	
	ENGINEER SANG-MIN NAM	
	THIRD ANGLE PROJECTION	
DO NOT SCALE DRAWING		

PROPRIETARY TO ANALOG DEVICES



2 Elizabeth Drive
Chelmsford, MA 01824
978-250-3343
Fax: 978-250-3373

TITLE

PCB, EVAL

SIZE	CODE ID NO.	DWG NO.	REV
A	1CN88	600-01352-00	1
SCALE: 1:1		WT:	SHEET: 1 OF 1

