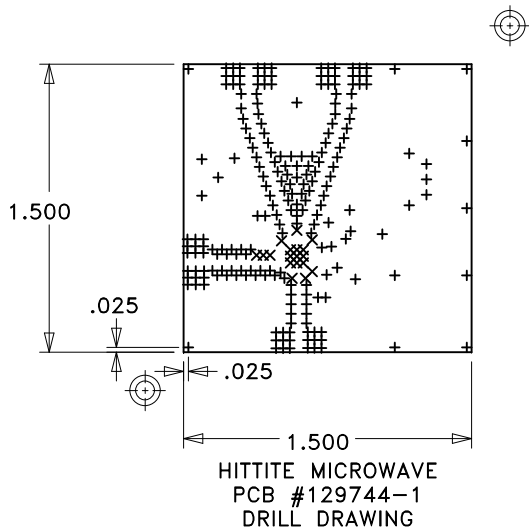


DO NOT SCALE PRINT

REVISION				
ZONE	LTR	DESCRIPTION	DATE	APPROVED
	1	ENGINEERING RELEASE	02/24/10	M.LYONS



NOTES:

UNLESS OTHERWISE SPECIFIED

1. MATERIAL: PER LAYER STACKUP. TYPE ARLO 25FR, OR ROGERS 4350, HALF OUNCE COPPER BOTH SIDES.
2. FINISH: GOLD PLATE PER ASTM B-488, TYPE III, CODE A, 8 TO 40 MICROINCHES, OVER NICKEL PER QQ-N-290, 100 MICROINCHES MINIMUM.
3. PLATED THRU HOLES: .001" MINIMUM WALL THICKNESS.
4. HOLE SIZES AND POSITIONS PER ARTWORK AND/OR DRILL FILE.
5. ALL HOLES TO BE LOCATED WITHIN ± 0.003 " OF THE CENTER OF THE PAD OR OTHER TRUE POSITION.
6. FRONT TO BACK REGISTRATION ± 0.003 " MAX.
7. BOARD WARPAGE: < 0.010 " PER LINEAR INCH.
8. SILKSCREEN TOPSIDE ONLY WITH WHITE EPOXY INK.
9. SOLDERMASK: LPI SOLDERMASK TOP SIDE. COLOR: GREEN REGISTRATION: ± 0.004 MAX.
10. "SIZE" IN DRILL LEGEND IS IN MILS AND REFERS TO FINISHED HOLE SIZE.
11. MANUFACTURE PER IPC-6012 CLASS 2.

SPECIAL REQUIREMENTS:

12. CRITICAL LINE WIDTH = $.016$ " ± 0.001 " ON METAL-01. ADJUST PROCESS TO ACHIEVE WIDTH.
13. VENDOR MAY ADD E-TEST STAMP TO PCB. VENDOR SHALL NOT ADD NAME, LOGO, DATE CODE, UL LISTING OR ANY OTHER MARKING TO ANY VISIBLE LAYER.
14. BOARDS MUST PASS VISUAL INSPECTION PER IPC-A-600 CLASS 2.

SIZE	QTY	SYM	PLATED	TOL
10	18	×	YES	+/-3
14	214	+	YES	+/-3

SILKSCREEN-01	
SOLDERMASK-01	
METAL-01 1/2oz Cu (.0007")	
ARLO 25FR OR R04350 Core .010" ± 0.001 " (CRITICAL)	
METAL-02 1/2oz Cu (.0007")	

LAYER STACKUP

PROPRIETARY TO HITTITE MICROWAVE CORPORATION

UNLESS OTHERWISE SPECIFIED:	
DIMENSIONS ARE IN INCHES (MM)	
DRAWING PRACTICES PER MIL-STD-100	
TOLERANCES:	
.XX	+/- 0.010
.XXX	+/- 0.005
.XXXX	+/- 0.002
ANGLES	+/- .5 DEG

DWN BY:	M. LYONS 02/18/2009
ENGINEER:	ONUR ARKUT



HITTITE MICROWAVE CORPORATION
20 Alpha Road Chelmsford, MA 01824

TITLE
PCB, EVAL DOWNCONVERTER
HMC5653A-FLP4E HMC5656A-HLP4E

SIZE	CODE ID NO.	DRAWING NO.	REV
A	1CN88	129744	1
SCALE: NONE		WT	SHEET 1 of 1