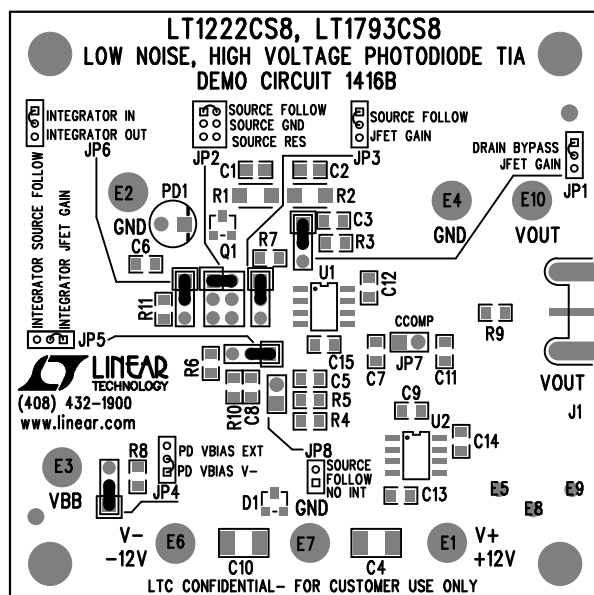
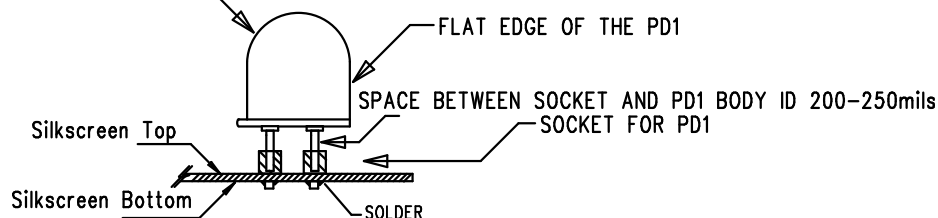


REVISION HISTORY				
ECO	REV	DESCRIPTION	APP. ENG.	DATE
-	1	PRODUCTION	GLEN B.	01-10-13



TOP SILKSCREEN
LINEAR TECHNOLOGY DATE: 01-10-13
DC1416B-1 * LT1222CS8, LT1793CS8
LOW NOISE HIGH VOLTAGE PHOTODIODE TIA

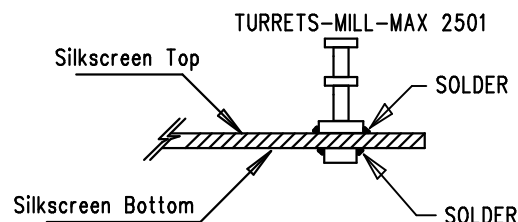
INSTALL PD1 AS SHOWN BELOW:
PD1, DO NOT SOLDER IN TO SOCKET



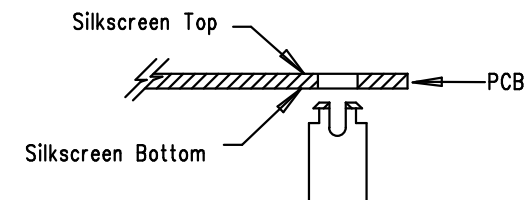
NOTES: UNLESS OTHERWISE SPECIFIED

1. WORKMANSHIP SHALL BE IN ACCORDANCE WITH IPC-A-610.
2. ASSEMBLY PROCESS SHALL INCLUDE: REFLOW SOLDER TOP SIDE SMD. MAXIMUM SOLDER TEMPERATURE IS 240 DEGREES CELSIUS.
3. PARTS TO OMIT WILL BE SPECIFIED ON THE BILL OF MATERIALS. LOCATIONS OF OMITTED PARTS SHALL BE FREE OF SOLDER. MASK THE SOLDER STENCIL WHERE SMT PARTS ARE OMITTED.
4. INSTALL SHUNTS AS SHOWN ON ASSY DRAWING.
JP1, JP2, JP3, JP4, JP5, JP6 - PIN 1-2
5. DEPANELIZE BOARDS AFTER ASSEMBLY AND ROUTE-OUT THE BREAKOUT TABS ON FOUR SIDES OF THE BOARD EDGE.
6. DO NOT APPLY ANY KIND OF ASSEMBLY STAMP OR QA STAMP TO ANY BOARD.

INSTALL TURRETS: E1, E2, E3, E4, E6, E7, E10



INSTALL STANDOFF



4X STANDOFF, NYLON, SNAP ON.

APPROVALS

PCB DES.	AK
APP ENG.	GLEN B.



1630 MCCARTHY BLVD
MILPITAS, CA 95035
PH: (408)432-1900
www.linear.com
LTC CONFIDENTIAL-
FOR CUSTOMER USE ONLY

TITLE: TOP ASSEMBLY DRAWING
**LOW NOISE HIGH VOLTAGE
PHOTODIODE TIA**

SIZE N/A	IC NO. LT1222CS8, LT1793CS8 DEMO CIRCUIT 1416B	REV. 1
-------------	---------------------------------------------------	-----------

SCALE = NONE

FILENAME: DC1416B-1.PCB

SHT 1 OF 1