

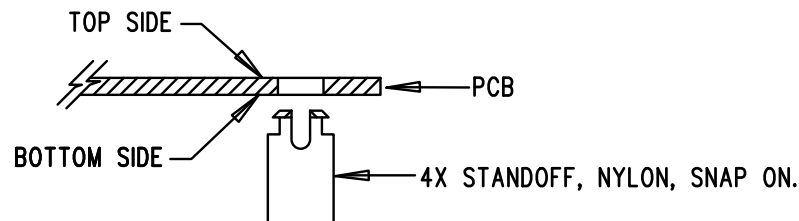
TOP SILKSCREEN
 LINEAR TECHNOLOGY DATE: 07-11-2017
 DC675C-1 * LT1568CGN
 ACTIVE RC, FILTER BUILDING BLOCK


NOTES: UNLESS OTHERWISE SPECIFIED

1. WORKMANSHIP SHALL BE IN ACCORDANCE WITH IPC-A-610.
2. ASSEMBLY PROCESS SHALL INCLUDE: REFLOW SOLDER TOP SIDE SMD. MAXIMUM SOLDER TEMPERATURE IS 240 DEGREES CELSIUS.
3. PARTS TO OMIT WILL BE SPECIFIED ON THE BILL OF MATERIALS. LOCATIONS OF OMITTED PARTS SHALL BE FREE OF SOLDER. MASK THE SOLDER STENCIL WHERE SMT PARTS ARE OMITTED.
4. INSTALL SHUNTS AS SHOWN ON ASSY DRAWING.

JP1 : DUAL SUPPLY
 JP2 : AB

5. DEPANELIZE BOARDS AFTER ASSEMBLY AND ROUTE-OUT THE BREAKOUT TABS ON FOUR SIDES OF THE BOARD EDGE.
6. DO NOT APPLY ANY KIND OF ASSEMBLY STAMP OR QA STAMP TO ANY BOARD.
7. INSTALL 4 STANDOFFS AT 4 LOCATIONS AS SHOWN BELOW:



APPROVALS		 1630 MCCARTHY BLVD MILPITAS, CA 95035 PH: (408)432-1900 www.linear.com LTC CONFIDENTIAL- FOR CUSTOMER USE ONLY		
PCB DES.	AK			
APP ENG.	PHILIP K.			
		TITLE: TOP ASSEMBLY DRAWING		
		ACTIVE RC, FILTER BUILDING BLOCK		
		SIZE N/A	IC NO. LT1568CGN DEMO CIRCUIT 675C	REV. 1
SCALE = NONE		FILENAME: DC675C-1.PCB		SHT 1 OF 1