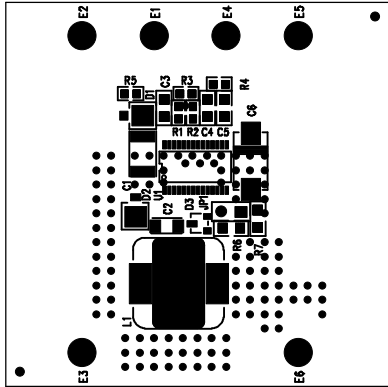


REVISIONS		
REV	DESCRIPTION	DATE




TOP SOLDER MASK

NOTES :

1. Unused SMD components should be free of Solder.
2. Fill up all vias with solder.

Assembly Top Drawing

APPROVALS		 LINEAR TECHNOLOGY		1630 McCarthy Blvd. Milpitas, CA 95035 PH: (408)432-1900	
		INIT	DATE		
	DRAWN				
	CHECK				
	DESIGN				
	ENGR				
				TITLE: Li-Ion Battery Charger	
		SIZE	A	DEMO BRD	REV. A
				DC288A	LT1571-1/-2
				DES- 0000	
				SHT 1 of 1	
				SCALE = NONE	