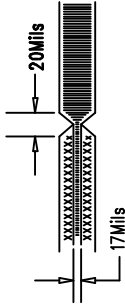


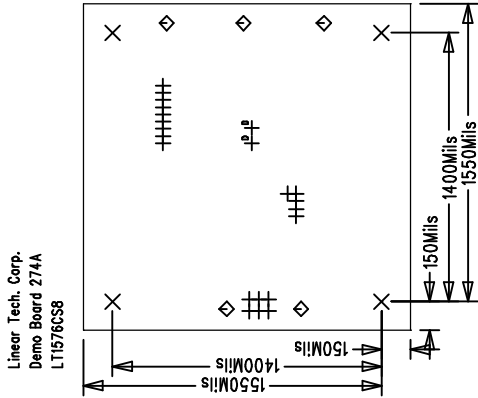
REVISIONS			
REV	DATE	APPR	DATE

NOTES: Unless Otherwise Specified


1. MATERIAL: 2 LAYERS, 0.062" THK. FR-4 GLASS EPOXY 2 OZ. COPPER CLAD.
2. ALL HOLE SHALL BE PLATED THRU.
3. PLATE THRU HOLES WITH COPPER .0014 MIN. THICKNESS. ALL HOLE SIZES IN HOLE TABLE ARE AFTER PLATING.
4. SILKSCREEN: WITH WHITE EPOXY NON-CONDUCTIVE INK.
5. NO SILKSCREEN ALLOWED ON PADS LANDS.
6. SOLDER MASK: LPI, GREEN.
7. NO BLOCK SOLDERMASKING OF PADS ROWS.
8. DO NOT MAKES CHANGES ON SILKSCREEN, SUCH AS COMPANY LOGO, QC STAMPS.
9. DO NOT PLATE TOOLING(3PLCS) AND SCORING(26PLCS) HOLES. (Reference Drawing Dwg No. DC205A)
10. SCORING:



SIZE	QTY	SYM	PLTD
15	20	+	PLTD
125	4	X	PLTD
94	5	◇	PLTD
35	2	D	PLTD



Fabrication Drawing

<div>APPROVALS</div> <table><tr><td></td><td>INIT</td><td>DATE</td></tr><tr><td>DRAWN</td><td></td><td></td></tr><tr><td>CHECK</td><td></td><td></td></tr><tr><td>DESIGN</td><td>Rmb</td><td></td></tr><tr><td>ENGR</td><td></td><td></td></tr></table>			INIT	DATE	DRAWN			CHECK			DESIGN	Rmb		ENGR					1630 McCarthy Blvd. Milpitas, CA 95035 PH: (408)432-1900	
			INIT	DATE																
		DRAWN																		
		CHECK																		
		DESIGN	Rmb																	
ENGR																				
		TITLE:		1.5A 200KHz Buck Converter																
		SIZE	NONE	Demo Board 274	REV. A															
SCALE = NONE		DES-0314		SHT 1 of 1																