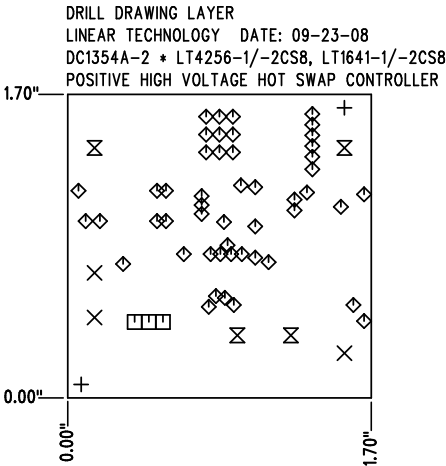
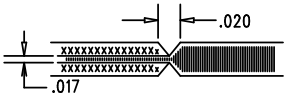


REVISIONS			
REV	DESCRIPTION	APPR	DATE
A-2	FINAL FABRICATION	VLADIMIR O.	09-24-08


SIZE	QTY	SYM	PLATED	TOL
0.07	2	+	NO	+/-0.003"
0.064	3	✕	YES	+/-0.003"
0.035	3	□	YES	+/-0.003"
0.015	49	◇	YES	+/-0.003"
0.094	4	⊗	YES	+/-0.003"

**NOTES: UNLESS OTHERWISE SPECIFIED**

- FAB PER IPC-A-600
- MATERIAL: EPOXY FIBERGLASS, NEMA GRADE FR-4  
FINISHED THICKNESS TO BE 0.062" +/- .005"  
TOTAL OF 2 LAYERS WITH 2 OZ. CU ON EACH.  
FLAMMABILITY RATING: 94 V-0 MINIMUM .
- SIZE: CUT TO DIMENSIONS AND TOLERANCES SHOWN.  
0.00" ARE PRIMARY DATUMS.
- DRILLING: DRILL HOLES PER SCHEDULE. PLATE THROUGH HOLES WITH COPPER, 0.001" THICK MIN.  
ALL HOLE SIZES ARE SPECIFIED AFTER PLATING.  
HOLE LOCATION TOLERANCES ARE +/-0.003" IN RELATION TO CENTER
- FINISH: SMOBC USING LPI BOTH SIDES, COLOR GREEN.  
GOLD IMMERSION.  
FOR SILKSCREEN TOP SIDE: USE WHITE NON-CONDUCTIVE INK.
- DO NOT ALTER ARTWORK e.g. TO ADD LOGO OR DATE CODE.  
PAD SIZE CAN BE MODIFIED TO MEET END FINISH.
- PCBS ARE TO BE RoHS COMPLIANT.
- SCORING FOR PANELIZED PCB:



SHOWN FROM COMPONENT SIDE

APPROVALS			 <div> 1630 MCCARTHY BLVD MILPITAS, CA 95035 PH: (408)432-1900 LTC CONFIDENTIAL- FOR CUSTOMER USE ONLY </div>	
	INIT	DATE		
DRAWN			TITLE: FABRICATION DRAWING LT4256-1/-2CS8, LT1641-1/-2CS8 POSITIVE HIGH VOLTAGE HOT SWAP CONTROLLER	
CHECK				
DESIGN	KIM T.	09-24-08		
ENGR	VLADIMIR O.	09-24-08		
			SIZE	REV.
			A	A-2
SCALE = NONE			SHT 1 of 1	