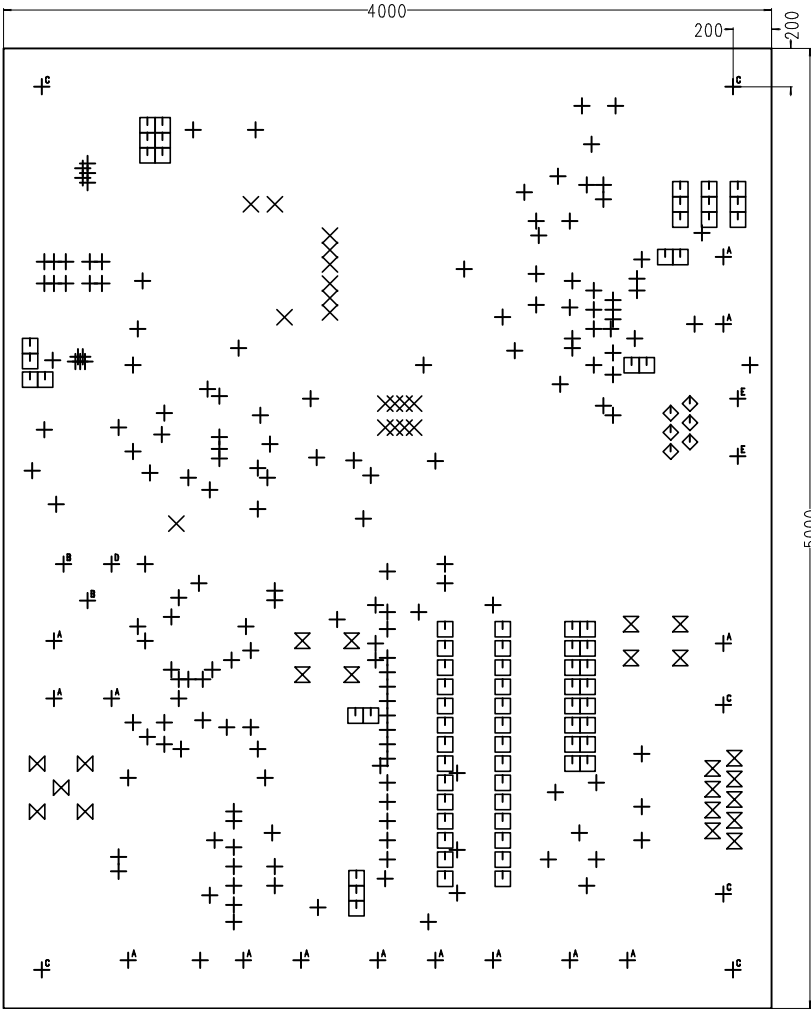


NOTES: UNLESS OTHERWISE SPECIFIED...

- 1. ALL DIMENSIONS ARE IN INCHES, +/- .003.  
FINISHED HOLE SIZES ARE +.003/-0.
- 2. FINISHED MATERIAL IS FR4, .062-THICK, 2-oz Cu, 2-LAYERS.  
PLATED HOLE WALL THICKNESS .001 MIN.
- 3. PROCESS & PLATING: SMOBC, 60/40 TIN-LEAD.
- 4. SOLDERMASK BOTH SIDES USING GLOSSY GREEN LPI.
- 5. SILKSCREEN WHITE NON-CONDUCTIVE INK COMPONENT SIDE.



| SIZE | QTY | SYM | PLTD  |
|------|-----|-----|-------|
| 15   | 177 | +   | PLTD  |
| 25   | 18  | X   | PLTD  |
| 31   | 72  | □   | PLTD  |
| 35   | 6   | ◇   | PLTD  |
| 41   | 17  | ⊗   | PLTD  |
| 52   | 5   | ⊗   | PLTD  |
| 94   | 14  | A   | PLTD  |
| 110  | 2   | B   | PLTD  |
| 120  | 6   | C   | PLTD  |
| 125  | 1   | D   | PLTD  |
| 125  | 2   | E   | NPLTD |