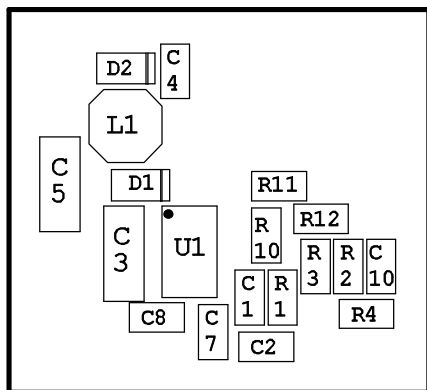


PCB Layout



This circuit is proprietary to Linear Technology and supplied for use with Linear Technology parts.  
**Customer Notice:** Linear Technology has made a best effort to design a circuit that meets customer-supplied specifications; however, it remains the customers responsibility to verify proper and reliable operation in the actual application. Component substitution and printed circuit board layout may significantly affect circuit performance or reliability. Contact Linear Applications Engineering for assistance.

( PR-03 )

<b>Linear Technology Corp.</b> 1630 McCarthy Blvd., Milpitas, CA 95035-7487 Phone: (408)432-1900 Fax (408)434-0507	
Title 1.5A, 200kHz Step-Down Converter with Burst Mode™	
Size	Document Number <b>Demo Board 481</b>
Date: Tuesday, December 02, 2003	Rev A Sheet 1 of 1