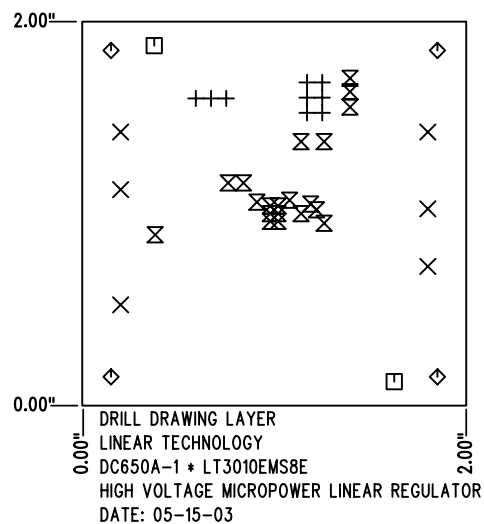


REVISIONS			
REV	DESCRIPTION	APPR	DATE
A	PROTOTYPE RELEASE		

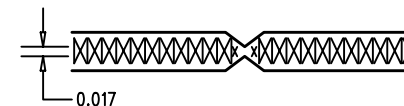
SIZE	QTY	SYM	PLTD
0.035	9	+	PLTD
0.094	6	×	PLTD
0.07	2	□	NPLTD
0.125	4	◇	PLTD
0.015	20	⊗	PLTD




SHOWN FROM COMPONENT SIDE

NOTES : Unless Otherwise Specified

1. MATERIAL : FR4 OR EQUIVALENT EPOXY, 2 OZ. COPPER CLAD FOR EXTERNAL LAYERS, 1 OZ. CU. FOR INTERNAL LAYERS. THICKNESS .062 +/- .006. TOTAL OF 4 LAYERS.
2. FINISH : ALL PLATED HOLES .001 MIN. / .0015 MAX. COPPER PLATE ELECTRODEPOSITED TIN-LEAD COMPOSITION BEFORE REFLOW , SOLDER MASK OVER BARE COPPER (SMOBC).
3. SOLDER MASK : BOTH SIDES USING LPI OR EQUIVALENT.
4. SILKSCREEN : USING WHITE NON-CONDUCTIVE EPOXY INK.
5. SCORING:



6. PLEASE LOOK AT THE README FILE FOR THE OTHER REQUIREMENTS.

APPROVALS			 LINEAR TECHNOLOGY 1630 McCarthy Blvd. Milpitas, CA 95035 PH: (408)432-1900	
	INIT	DATE		
DRAWN			TITLE: FABRICATION DRAWING HIGH VOLTAGE MICROPOWER LINEAR REGULATOR	
CHECK				
DESIGN	KIM T.	05-15-03		
ENGR	TOM G.	05-15-03		
			SIZE	REV.
			A	A
SCALE = NONE			DES- 0000	SHT 1 of 1