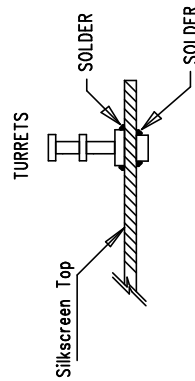



**NOTES : Unless Otherwise Specified**

1. BREAK BOARDS FROM THE PANEL WHEN ASSEMBLY IS COMPLETE.
2. OPTIONAL COMPONENTS ARE UNSTUFFED AND SHOULD BE FREE OF SOLDER AFTER ASSEMBLY.
3. JUMPER SHUNTS INSTALLATION: JP1 – 3.3V, JP2 – ON
4. INSTALL TURRETS



<div style="text-align: center;"> <h1>APPROVALS</h1> </div>						1630 McCarthy Blvd. Milpitas, CA 95035 PH: (408)432-1900	
				TITLE: LT3011ENSE 50mA, High Linear Regulator with PWRGD			
DRAWN	CHECK	DESIGN	ENGR	SIZE	A	IDENO	REV. A
		Antonia K	3/5/08			DC1407A	
		Kevin H	3/5/08				
SCALE = NONE				SHT 1 of 1			